

# PLAN OF POSTING OF LOTS 2, 17, 18, 20 TO 24 BLOCK 167, PLAN 1268, DISTRICT LOT 343 CARIBOO DISTRICT

1268-B

43238

Deposited in the Land Registry Office  
of Kamloops B.C.  
this \_\_\_\_\_ day of \_\_\_\_\_, 1962

Registrar

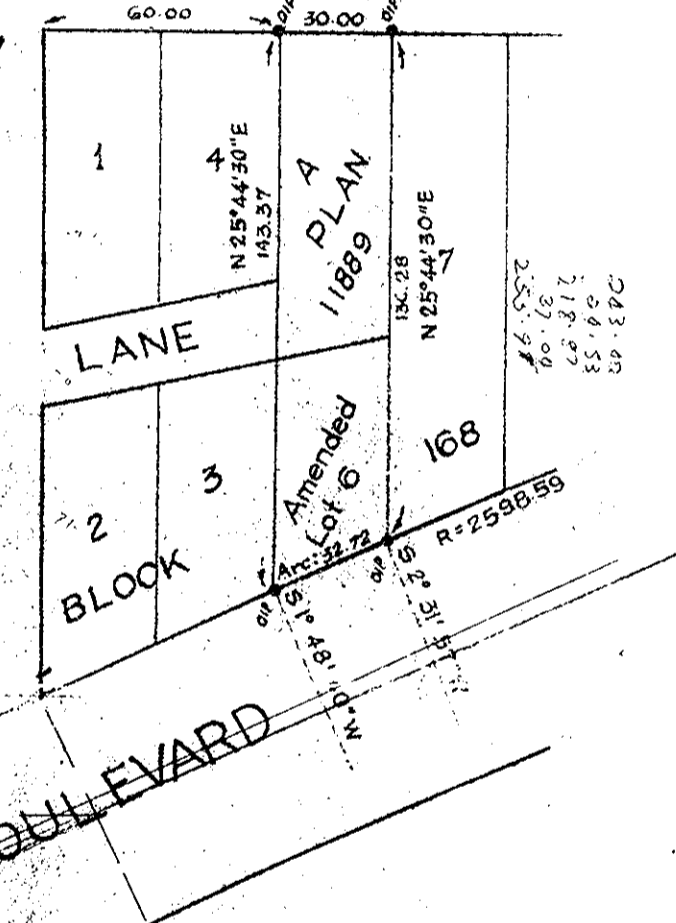
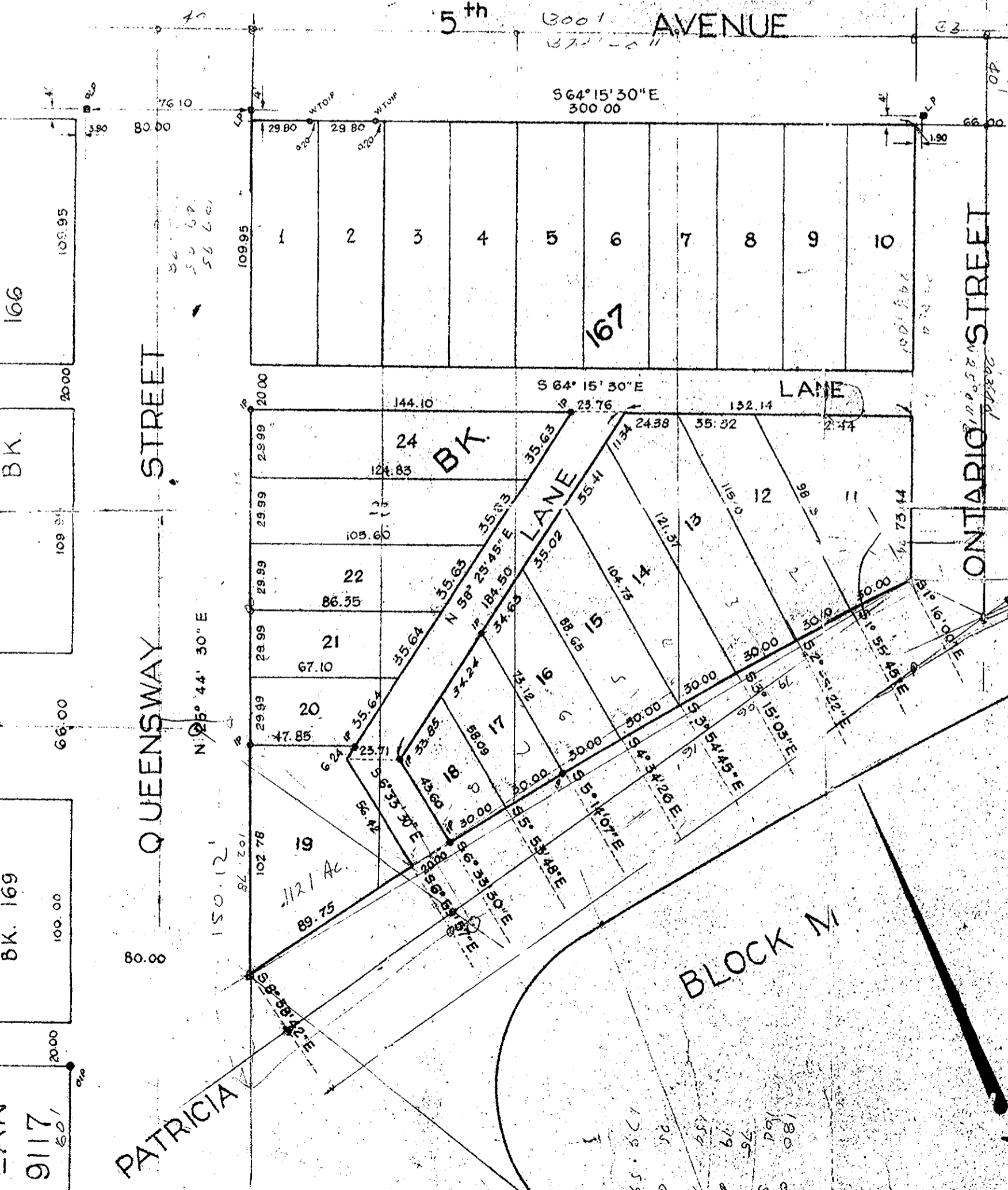
SCALE: 1"=50'

## LEGEND

Bearings are astronomic and are derived from Plan 268

- Old iron posts found, shown: OIP
- Old lead plugs found, shown: OLP
- Iron posts set, shown: IP
- Lead plugs set, shown: LP

142.80  
147.45  
151.60  
155.75  
159.90  
164.05  
168.20  
172.35  
176.50  
180.65  
184.80  
188.95  
193.10  
197.25  
201.40  
205.55  
209.70  
213.85  
218.00  
222.15  
226.30  
230.45  
234.60  
238.75  
242.90  
247.05  
251.20  
255.35  
259.50  
263.65  
267.80  
271.95  
276.10  
280.25  
284.40  
288.55  
292.70  
296.85  
301.00  
305.15  
309.30  
313.45  
317.60  
321.75  
325.90  
330.05  
334.20  
338.35  
342.50  
346.65  
350.80  
354.95  
359.10  
363.25  
367.40  
371.55  
375.70  
379.85  
384.00  
388.15  
392.30  
396.45  
400.60  
404.75  
408.90  
413.05  
417.20  
421.35  
425.50  
429.65  
433.80  
437.95  
442.10  
446.25  
450.40  
454.55  
458.70  
462.85  
467.00  
471.15  
475.30  
479.45  
483.60  
487.75  
491.90  
496.05  
500.20  
504.35  
508.50  
512.65  
516.80  
520.95  
525.10  
529.25  
533.40  
537.55  
541.70  
545.85  
550.00  
554.15  
558.30  
562.45  
566.60  
570.75  
574.90  
579.05  
583.20  
587.35  
591.50  
595.65  
599.80  
603.95  
608.10  
612.25  
616.40  
620.55  
624.70  
628.85  
633.00  
637.15  
641.30  
645.45  
649.60  
653.75  
657.90  
662.05  
666.20  
670.35  
674.50  
678.65  
682.80  
686.95  
691.10  
695.25  
699.40  
703.55  
707.70  
711.85  
716.00  
720.15  
724.30  
728.45  
732.60  
736.75  
740.90  
745.05  
749.20  
753.35  
757.50  
761.65  
765.80  
769.95  
774.10  
778.25  
782.40  
786.55  
790.70  
794.85  
799.00  
803.15  
807.30  
811.45  
815.60  
819.75  
823.90  
828.05  
832.20  
836.35  
840.50  
844.65  
848.80  
852.95  
857.10  
861.25  
865.40  
869.55  
873.70  
877.85  
882.00  
886.15  
890.30  
894.45  
898.60  
902.75  
906.90  
911.05  
915.20  
919.35  
923.50  
927.65  
931.80  
935.95  
940.10  
944.25  
948.40  
952.55  
956.70  
960.85  
965.00  
969.15  
973.30  
977.45  
981.60  
985.75  
989.90  
994.05  
998.20  
1002.35  
1006.50  
1010.65  
1014.80  
1018.95  
1023.10  
1027.25  
1031.40  
1035.55  
1039.70  
1043.85  
1048.00  
1052.15  
1056.30  
1060.45  
1064.60  
1068.75  
1072.90  
1077.05  
1081.20  
1085.35  
1089.50  
1093.65  
1097.80  
1101.95  
1106.10  
1110.25  
1114.40  
1118.55  
1122.70  
1126.85  
1131.00  
1135.15  
1139.30  
1143.45  
1147.60  
1151.75  
1155.90  
1160.05  
1164.20  
1168.35  
1172.50  
1176.65  
1180.80  
1184.95  
1189.10  
1193.25  
1197.40  
1201.55  
1205.70  
1209.85  
1214.00  
1218.15  
1222.30  
1226.45  
1230.60  
1234.75  
1238.90  
1243.05  
1247.20  
1251.35  
1255.50  
1259.65  
1263.80  
1267.95  
1272.10  
1276.25  
1280.40  
1284.55  
1288.70  
1292.85  
1297.00  
1301.15  
1305.30  
1309.45  
1313.60  
1317.75  
1321.90  
1326.05  
1330.20  
1334.35  
1338.50  
1342.65  
1346.80  
1350.95  
1355.10  
1359.25  
1363.40  
1367.55  
1371.70  
1375.85  
1380.00  
1384.15  
1388.30  
1392.45  
1396.60  
1400.75  
1404.90  
1409.05  
1413.20  
1417.35  
1421.50  
1425.65  
1429.80  
1433.95  
1438.10  
1442.25  
1446.40  
1450.55  
1454.70  
1458.85  
1463.00  
1467.15  
1471.30  
1475.45  
1479.60  
1483.75  
1487.90  
1492.05  
1496.20  
1500.35  
1504.50  
1508.65  
1512.80  
1516.95  
1521.10  
1525.25  
1529.40  
1533.55  
1537.70  
1541.85  
1546.00  
1550.15  
1554.30  
1558.45  
1562.60  
1566.75  
1570.90  
1575.05  
1579.20  
1583.35  
1587.50  
1591.65  
1595.80  
1600.00



I, R.J. Goble, of the city of Prince George, British Columbia, Land Surveyor, make oath and say that I was present and did personally superintend the survey represented by this plan, and that the survey and plan are correct. The said survey was completed on the 5th day of March 1962.

Sworn before me this 9th day of March 1962

Commissioner for taking affidavits within British Columbia

Scale 50 - 1"