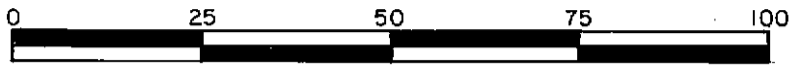


STRATA PLAN OF  
LOT A, PLAN 26839  
DISTRICT LOT 8177  
CARIBOO DISTRICT—BRITISH COLUMBIA

STRATA PLAN **PG 85**

Deposited and registered in the Land  
Title Office at Prince George, B. C.  
this 12<sup>th</sup> day of March, 1982.

SCALE: 1 : 1000



NOTE: Bearings are astronomic, derived from the  
south boundary of Lot A, Plan 26839.  
All distances are in metres.

Registrar E.S. Russell per [Signature]

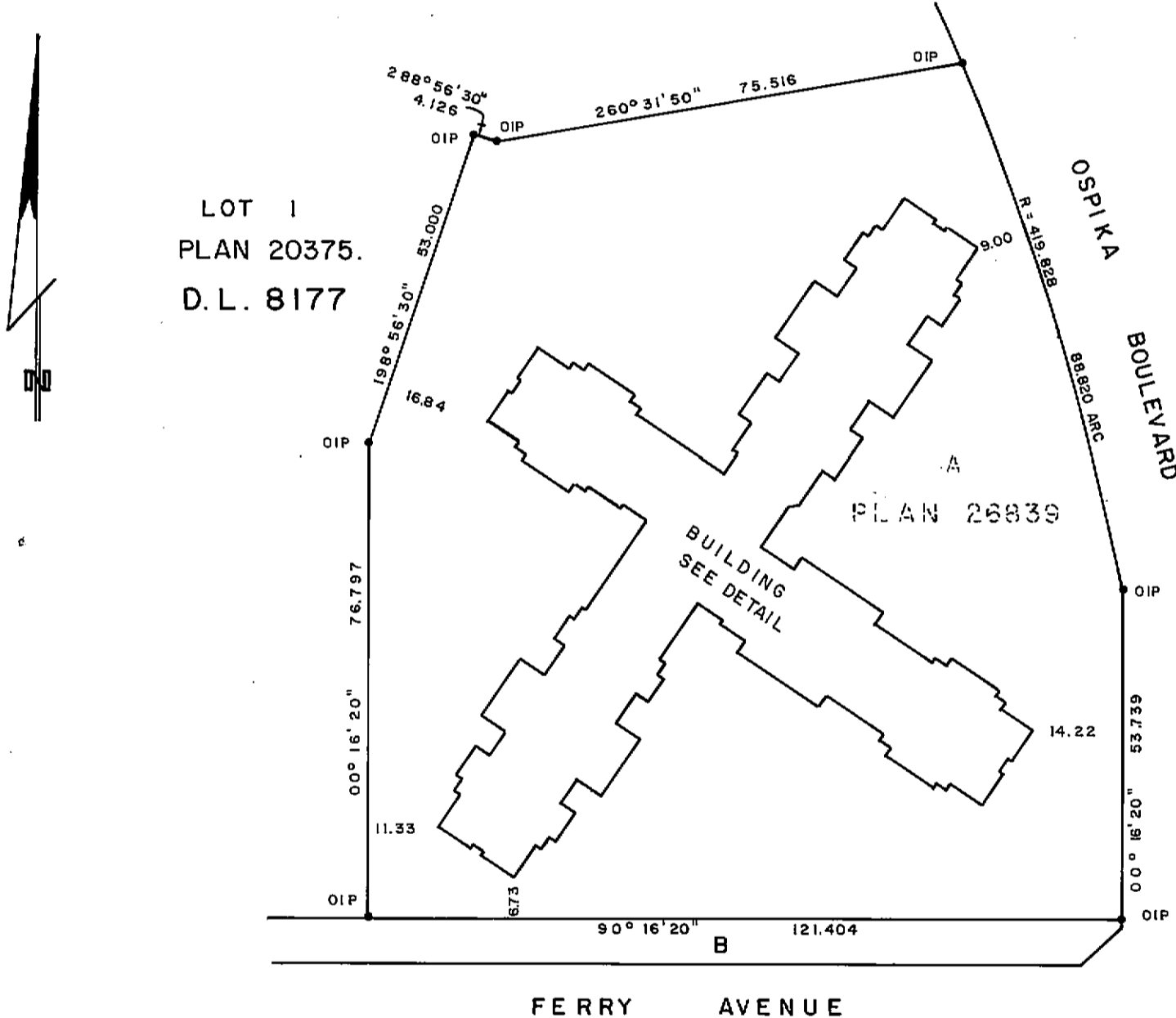
017 56444 - 5 6528

- LEGEND:
- OIP denotes an old iron pin found.
  - "B" denotes balcony.
  - "P" denotes patio.
  - m<sup>2</sup> denotes square metre.
  - S.L. denotes Strata Lot.
  - L.C.P. denotes limited common property.

"CITY OF PRINCE GEORGE"

CIVIC ADDRESS:

CENTAUR VILLA  
3033 OSPIKA BOULEVARD  
PRINCE GEORGE — B.C.



The address for service of documents  
on this Strata Corporation is:

THE OWNERS OF CENTAUR VILLA  
C/O HOPE, HEINRICH & HANSEN  
1598 6TH AVENUE  
PRINCE GEORGE — B.C.

I, DONALD A. DUFFY, of the City of Prince  
George a British Columbia Land Surveyor,  
hereby certify that the buildings erected  
on the parcel described above are wholly within  
the external boundaries of that parcel.

[Signature]  
B.C.L.S.

HULL RIVER HOLDINGS (1981) LTD.

[Signature]  
Authorized Signatory

Authorized Signatory

NORTHLAND BANK

Authorized Signatory

Authorized Signatory

Dated at Prince George, B.C. this  
3<sup>rd</sup> day of DEC., 1981.

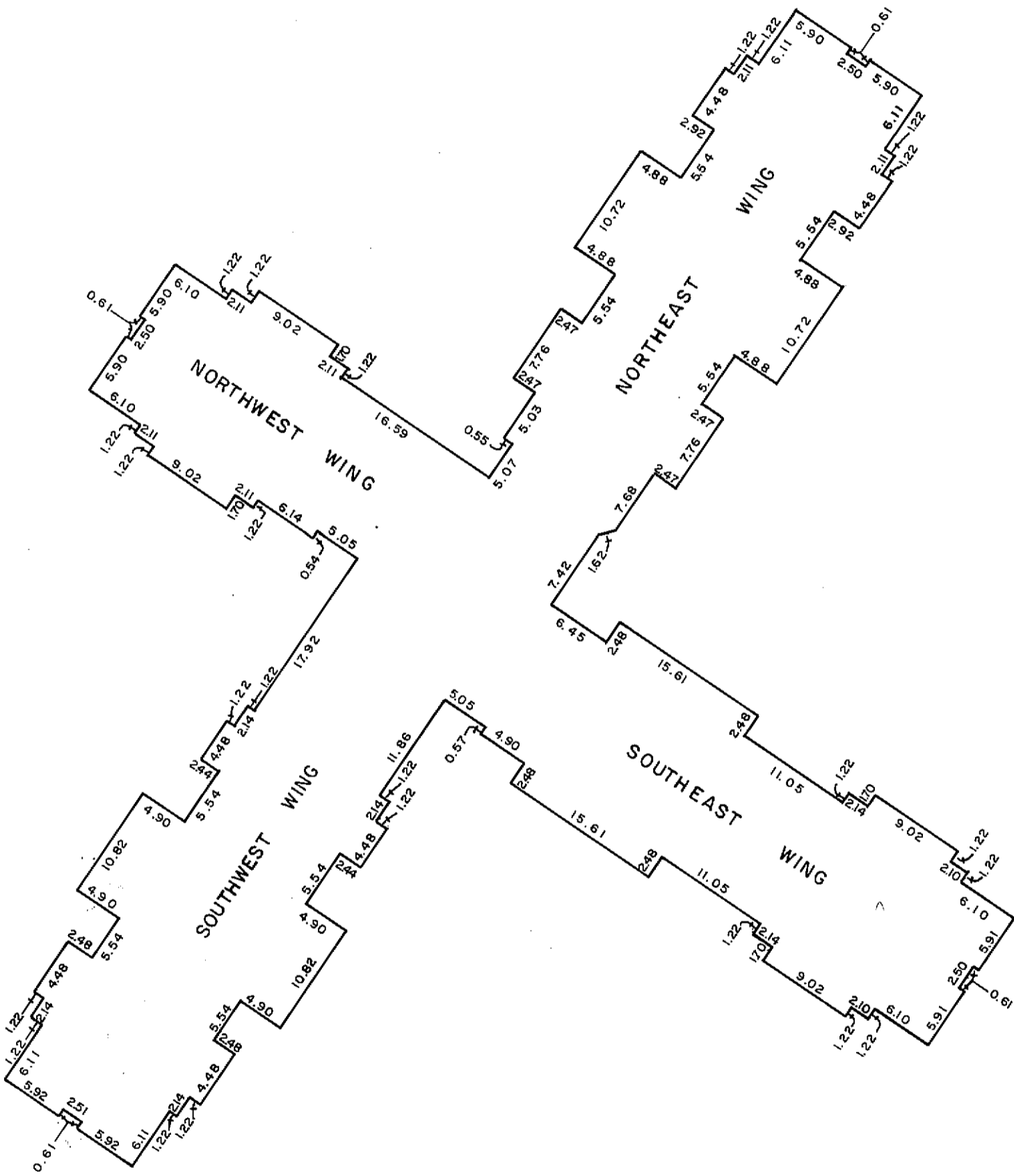
W.D. USHER & ASSOCIATES  
LAND SURVEYORS  
PRINCE GEORGE — B.C.  
12936

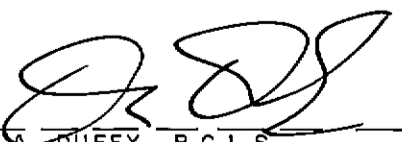
BUILDING DETAIL

SCALE: 1 : 300

NOTE: Dimensions shown are to wall centrelines.

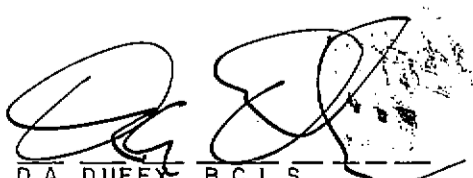
STRATA PLAN PG 85



  
D.A. DUFFY, B.C.L.S.  
This 3 day of Dec., 1981.

STRATA PLAN PG 85

LOT NO.	SHEET NO.	FORM 1	FORM 2	FORM 3
		SCHEDULE OF UNIT ENTITLEMENT	SCHEDULE OF INTEREST UPON DESTRUCTION	SCHEDULE OF VOTING RIGHTS
		UNIT ENTITLEMENT	INTEREST UPON DESTRUCTION	NUMBER OF VOTES
1	7	12868	11764	
2	7	12309	11764	
3	7	12309	11764	
4	7	12092	11764	
5	7	12092	11764	
6	7	12309	11764	
7	7	12309	11764	
8	7	12868	11764	
9	8	12334	11764	
10	8	12376	11764	
11	8	12118	11764	
12	8	12118	11764	
13	8	12376	11764	
14	8	12347	11764	
15	9	12142	11764	
16	9	12428	11764	
17	9	12428	11764	
18	9	12154	11764	
19	9	12154	11764	
20	9	12428	11764	
21	9	12428	11764	
22	9	12142	11764	
23	9	12514	11764	
24	10	12928	11764	
25	10	12838	11764	
26	10	12386	11765	
27	10	12090	11765	
28	10	12090	11765	
29	10	12386	11765	
30	10	12838	11765	
31	10	12928	11765	
32	11	10741	11765	
33	11	12309	11765	
34	11	12309	11765	
35	11	10728	11765	
36	11	10728	11765	
37	11	12309	11765	
38	11	12309	11765	
39	11	10741	11765	
40	12	12334	11765	
41	12	10723	11765	
42	12	10750	11765	
43	12	10750	11765	

  
D.A. DUFFY, B.C.L.S.  
This 3rd day of December, 198

STRATA PLAN PG 85

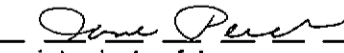
LOT NO.	SHEET NO.	FORM 1 (CONT.)	FORM 2 (CONT.)	FORM 3 (CONT.)
		SCHEDULE OF UNIT ENTITLEMENT	SCHEDULE OF INTEREST UPON DESTRUCTION	SCHEDULE OF VOTING RIGHTS
		UNIT ENTITLEMENT	INTEREST UPON DESTRUCTION	NUMBER OF VOTES
44	12	10723	11765	
45	12	12347	11765	
46	13	10774	11765	
47	13	12428	11765	
48	13	12428	11765	
49	13	10794	11765	
50	13	10794	11765	
51	13	12428	11765	
52	13	12428	11765	
53	13	10774	11765	
54	13	12514	11765	
55	14	10757	11765	
56	14	10700	11765	
57	14	10718	11765	
58	14	10733	11765	
59	14	10733	11765	
60	14	10718	11765	
61	14	10700	11765	
62	14	10757	11765	
63	15	10741	11765	
64	15	12309	11765	
65	15	12309	11765	
66	15	12309	11765	
67	15	12309	11765	
68	15	10741	11765	
69	16	12334	11765	
70	16	10723	11765	
71	16	10723	11765	
72	16	12347	11765	
73	17	10774	11765	
74	17	12428	11765	
75	17	12428	11765	
76	17	12428	11765	
77	17	12428	11765	
78	17	10773	11765	
79	17	12514	11765	
80	18	10757	11765	
81	18	10705	11765	
82	18	10676	11765	
83	18	10676	11765	
84	18	10705	11765	
85	18	10757	11765	
AGGREGATE		1000 000	1000 000	


I, the undersigned do solemnly declare that:  
I, the undersigned am the duly authorized agent of the owner-developer.  
The Strata Plan is entirely for residential use.  
I make this solemn declaration conscientiously believing it to be true  
and knowing that it is of the same force and effect as if made under oath.

Declared before me at \_\_\_\_\_ in the Province of  
British Columbia. This \_\_\_\_\_ day of \_\_\_\_\_, 1982.

A Commissioner for taking Affidavits within British Columbia.

Accepted as to forms 1, 2 and 3.  
this 25<sup>th</sup> day of February, 1982.

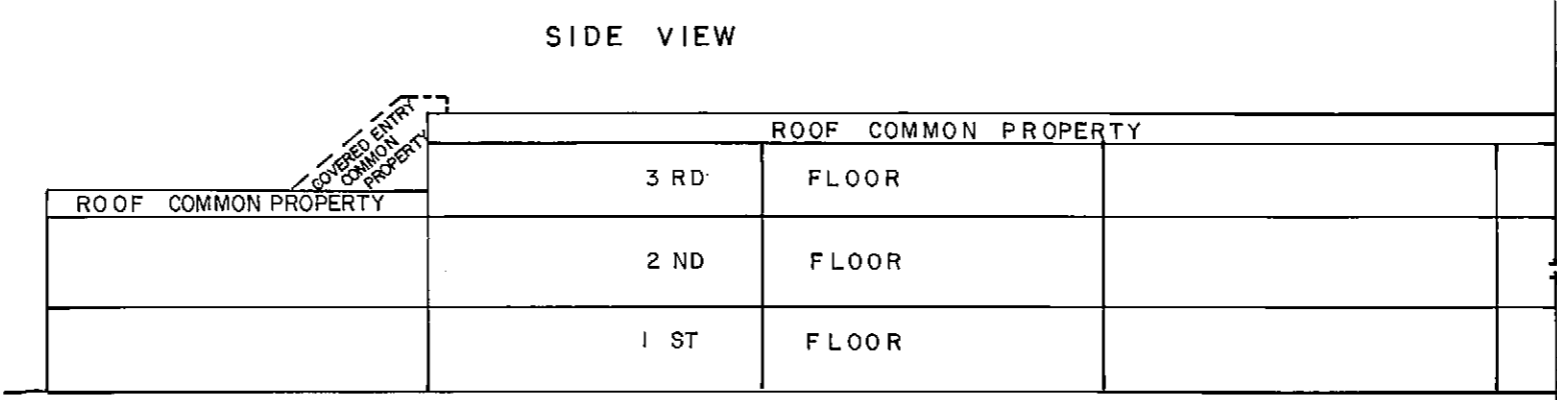
  
Superintendent of Insurance

  
D.A. DUFFY, B.C. L. S.  
This 3<sup>rd</sup> day of December, 1981.

W.D. USHER & ASSOCIATES  
LAND SURVEYORS  
PRINCE GEORGE — B.C.  
12936

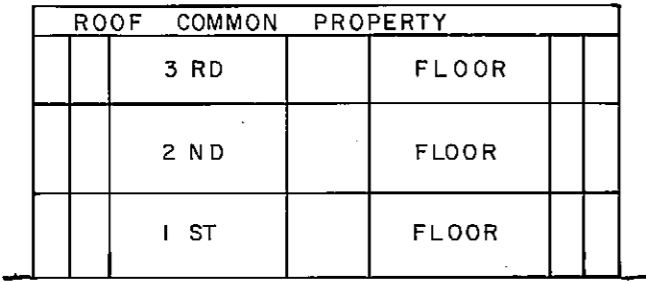
BUILDING ELEVATIONS  
SCALE : 1 : 250

SIDE VIEW



NORTH EAST WING  
AND  
SOUTH WEST WING

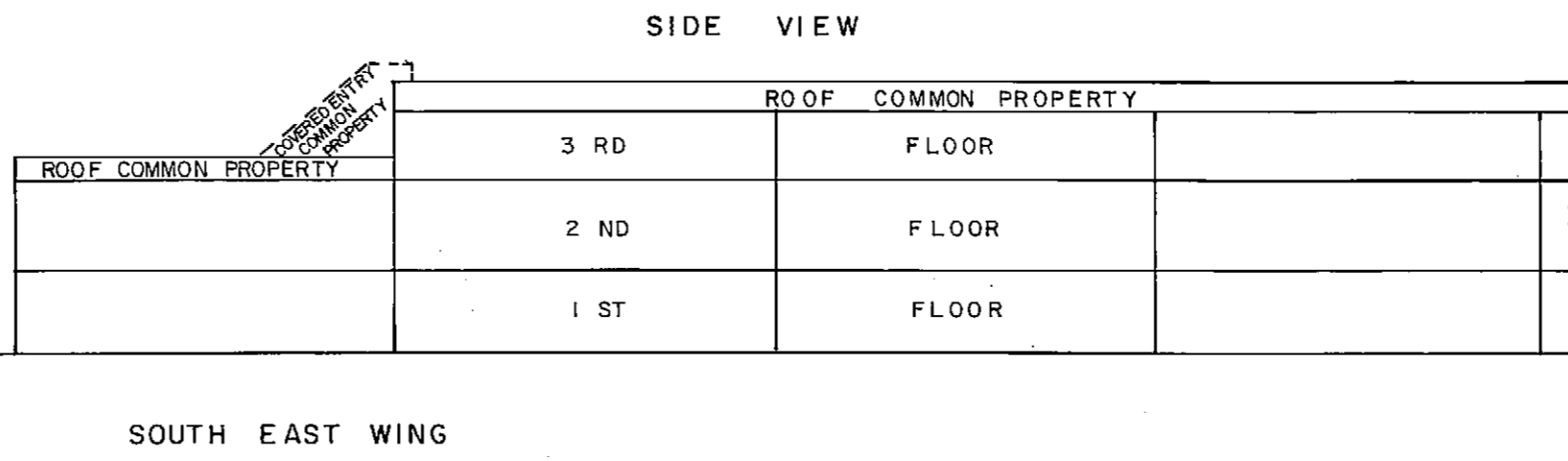
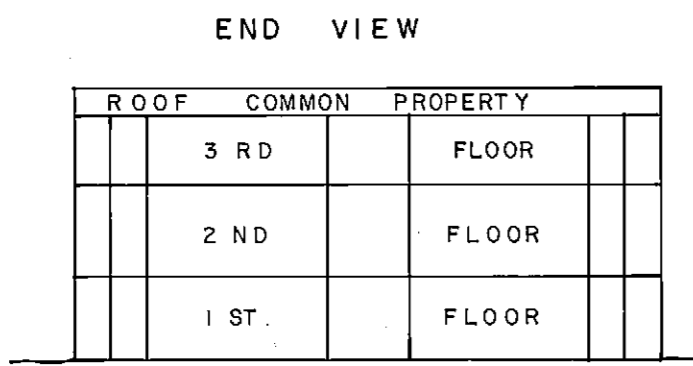
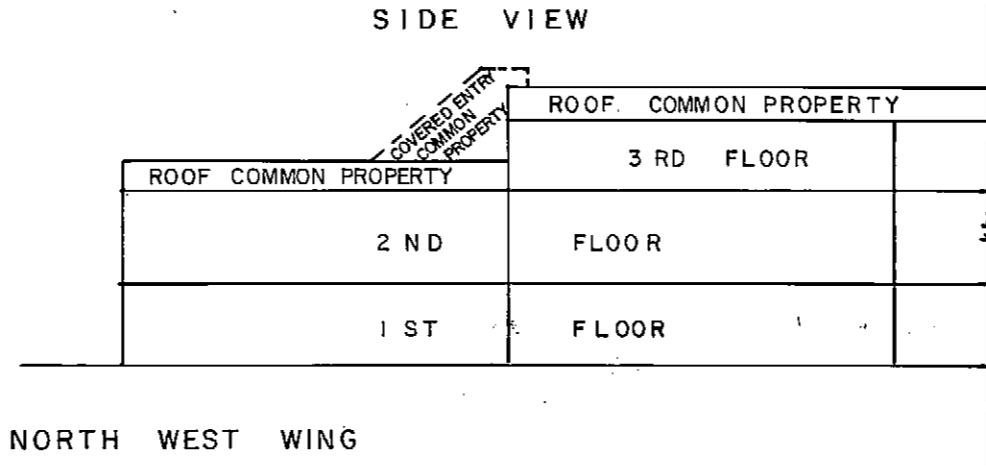
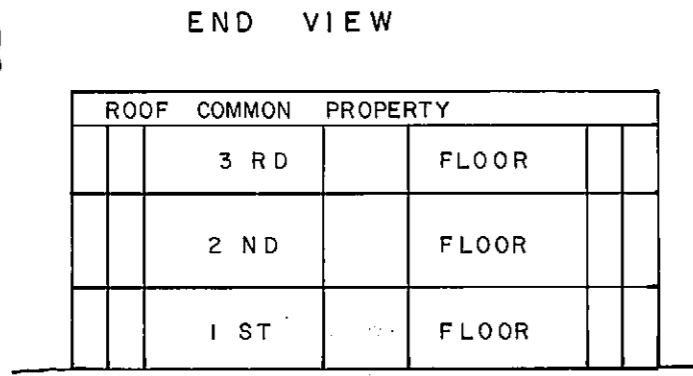
END VIEW



*[Signature]*  
 D.A. DUFFY, B.C.S.  
 This 3 day of 25<sup>th</sup> 198 L.

STRATA PLAN **PG 85**

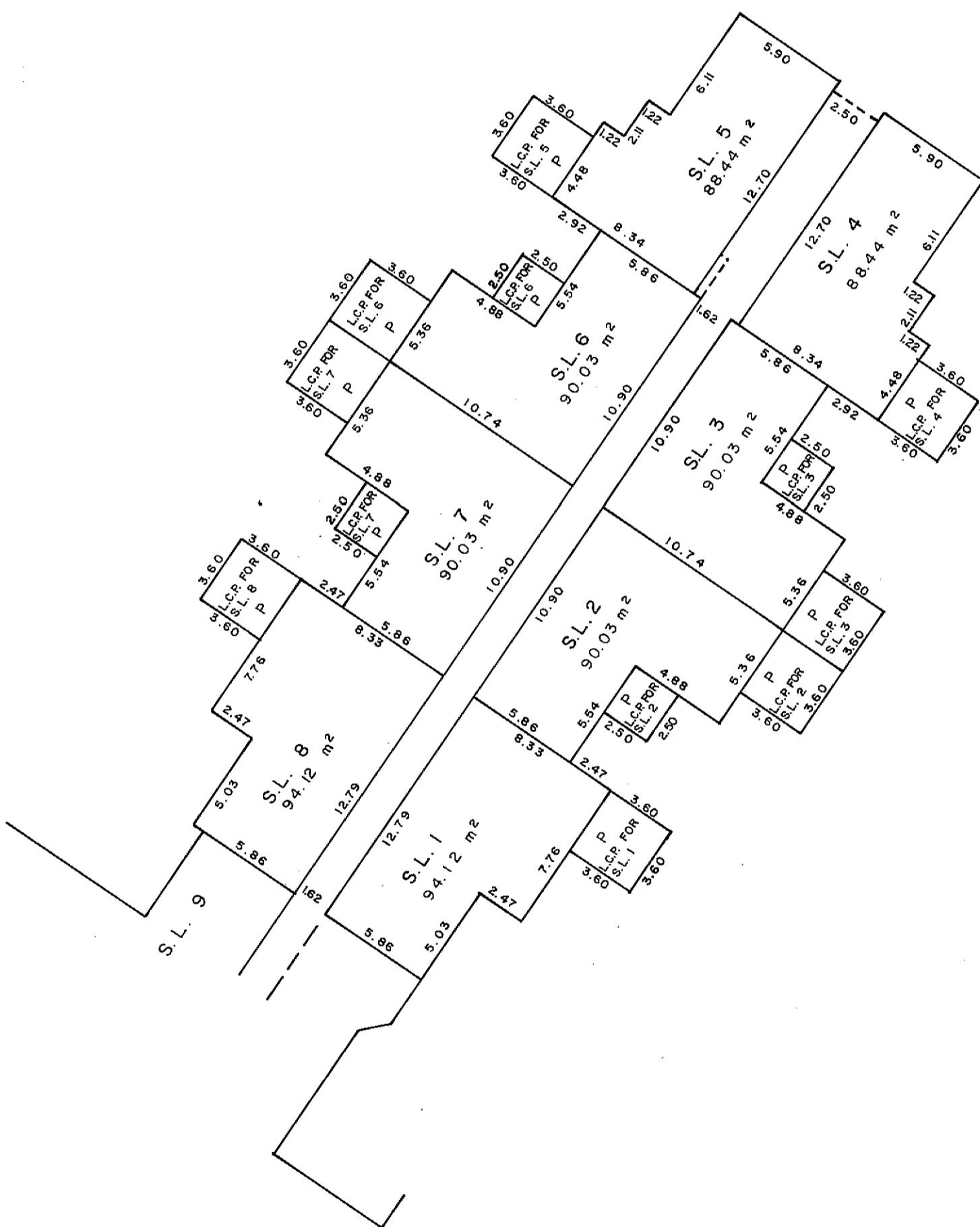
BUILDING ELEVATIONS  
SCALE : 1 : 250




*[Signature]*  
D.A. DUFFY, B.S.  
This 3 day of Dec, 1984

STRATA PLAN **PG85**

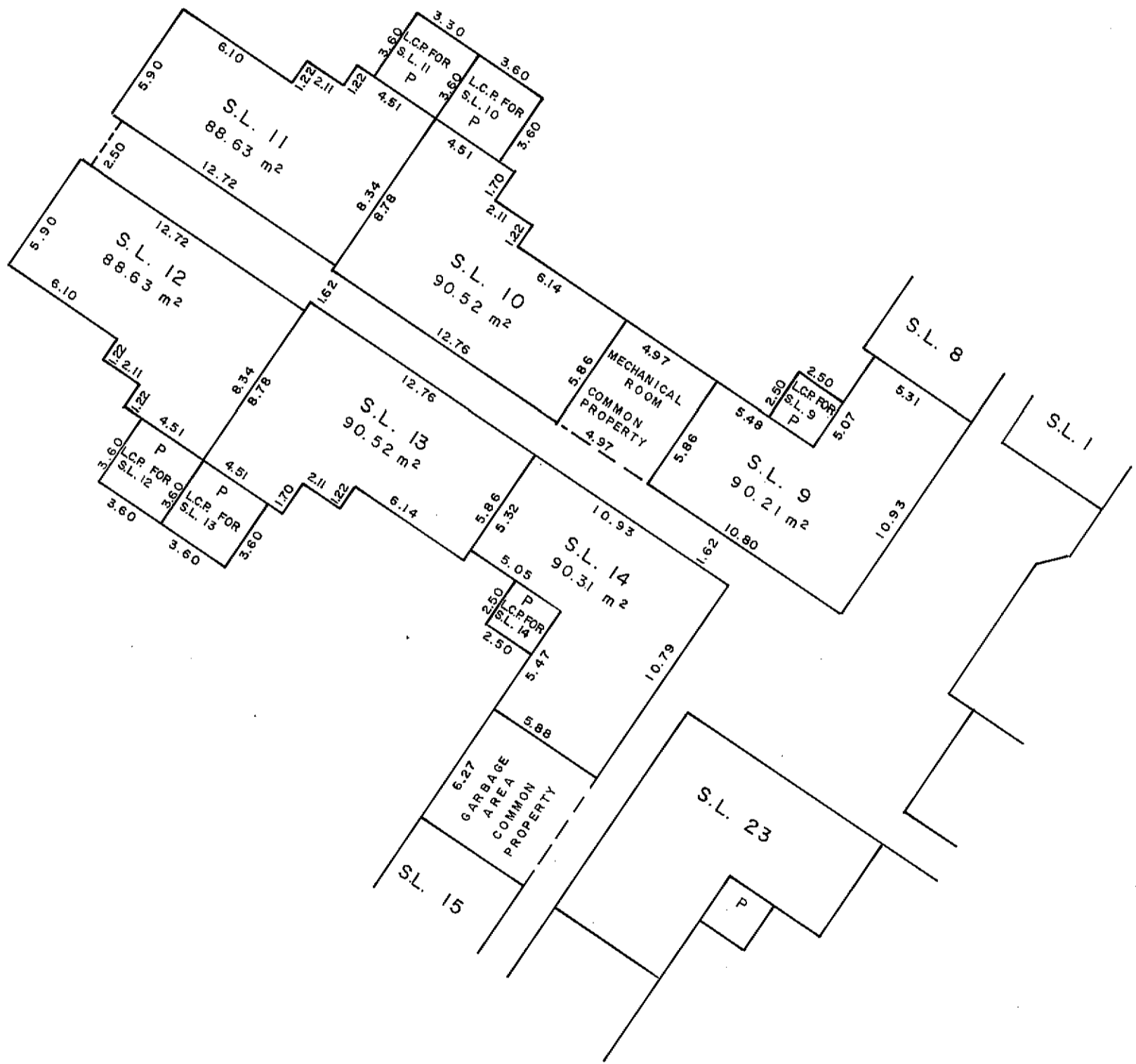
FIRST FLOOR  
NORTHEAST WING  
STRATA LOTS 1 TO 8  
SCALE: 1 : 250



  
 D.A. DUFFY, B.C.L.S.  
 This 3 day of DEC, 1981.

STRATA PLAN **PG 85**

FIRST FLOOR  
NORTHWEST WING  
STRATA LOTS 9 TO 14  
SCALE: 1 : 250



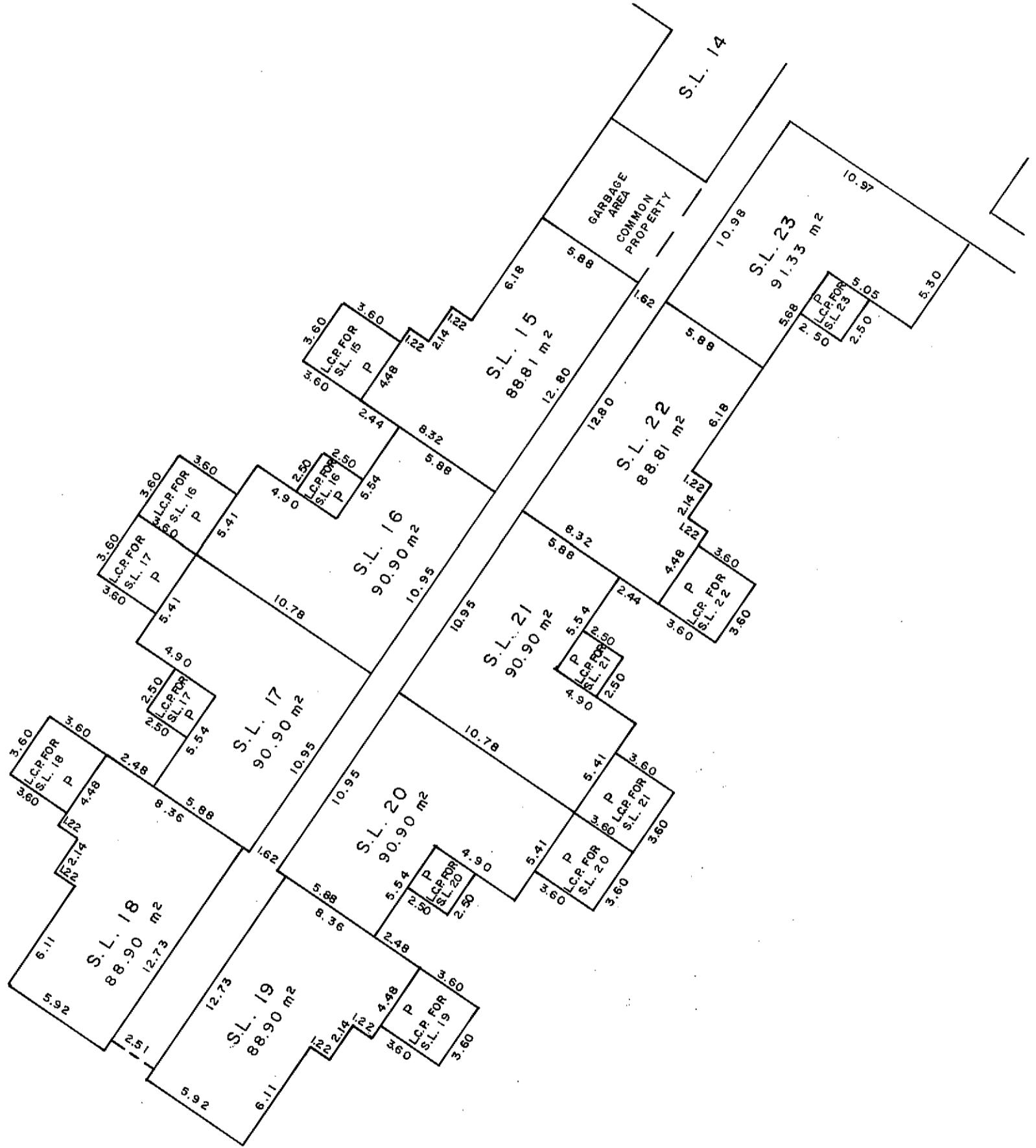
*[Signature]*  
 D. A. DUFFY, B.C.L.S.  
 This 3 day of DEC., 1981.



STRATA PLAN **PG 85**

FIRST FLOOR  
SOUTHWEST WING  
STRATA LOTS 15 TO 23

SCALE: 1 : 250

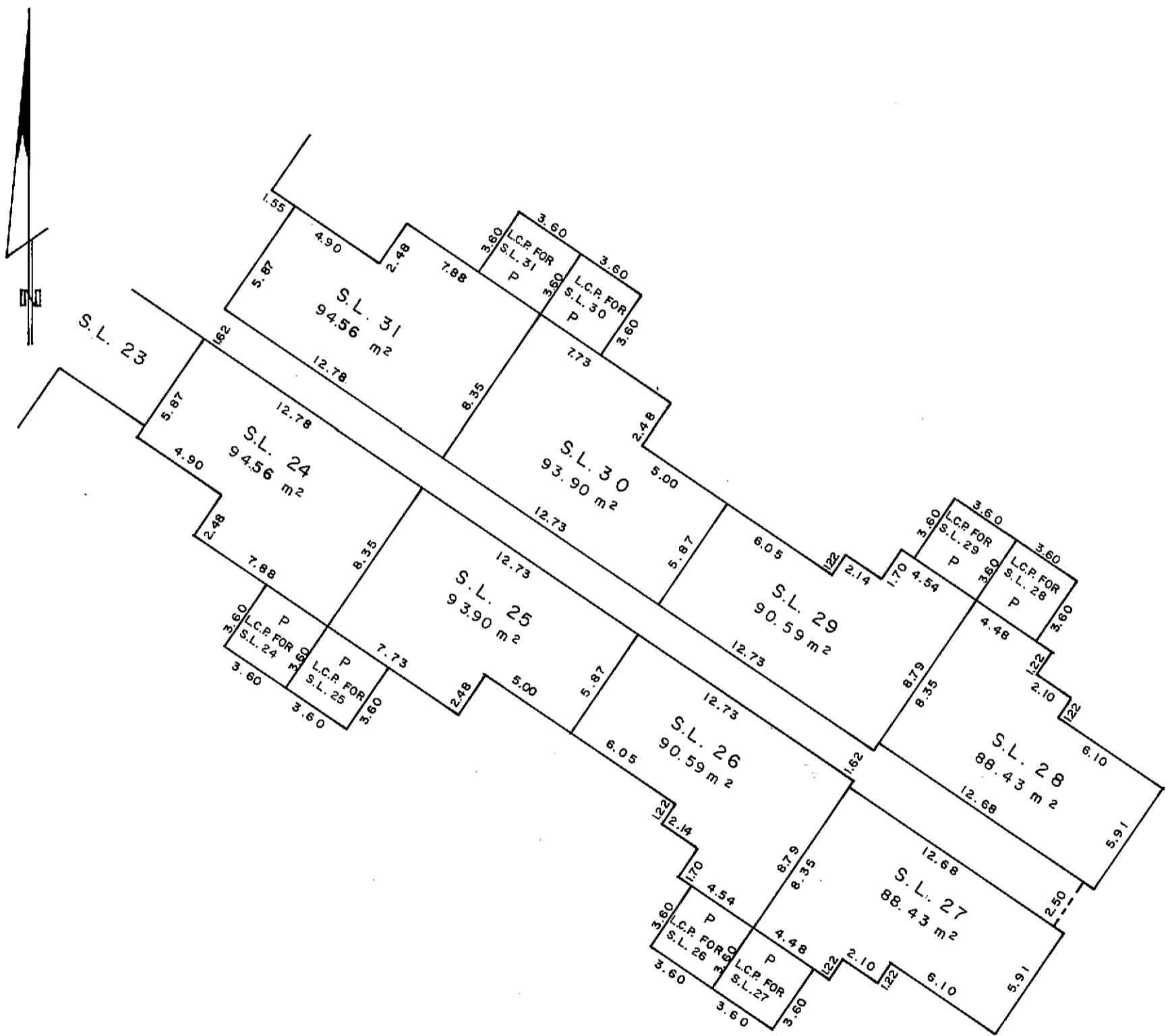



  
 D. A. DUFFY, P. G. L. S.

This 3 day of DEC., 1981.

FIRST FLOOR  
SOUTH EAST WING  
STRATA LOTS 24 TO 31  
SCALE: 1 : 250

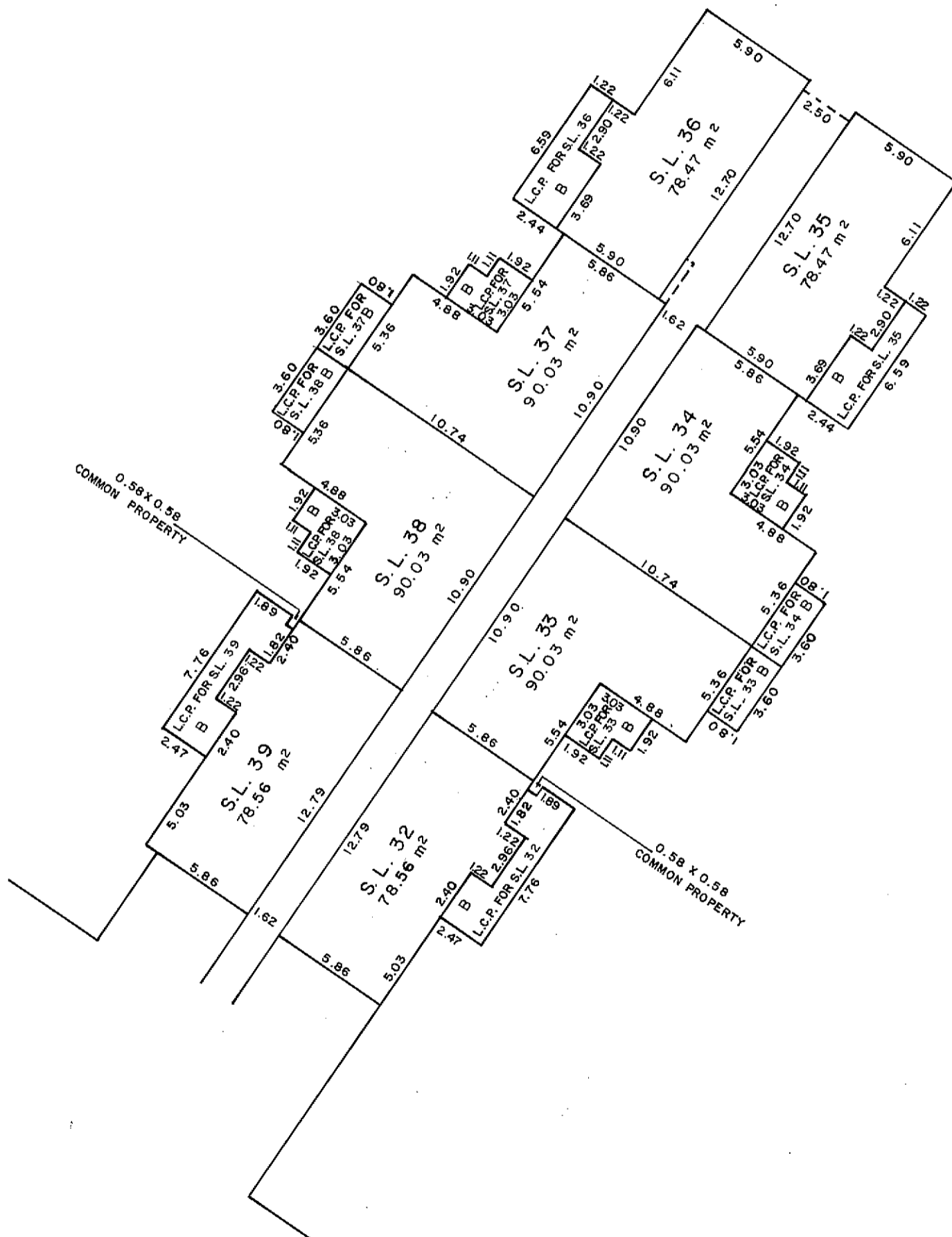
STRATA PLAN PG 85




  
 D. A. DUFFY, B.C.L.S.  
 This 3 day of DEC, 1981.

SECOND FLOOR  
NORTHEAST WING  
STRATA LOTS 32 TO 39  
SCALE: 1 : 250

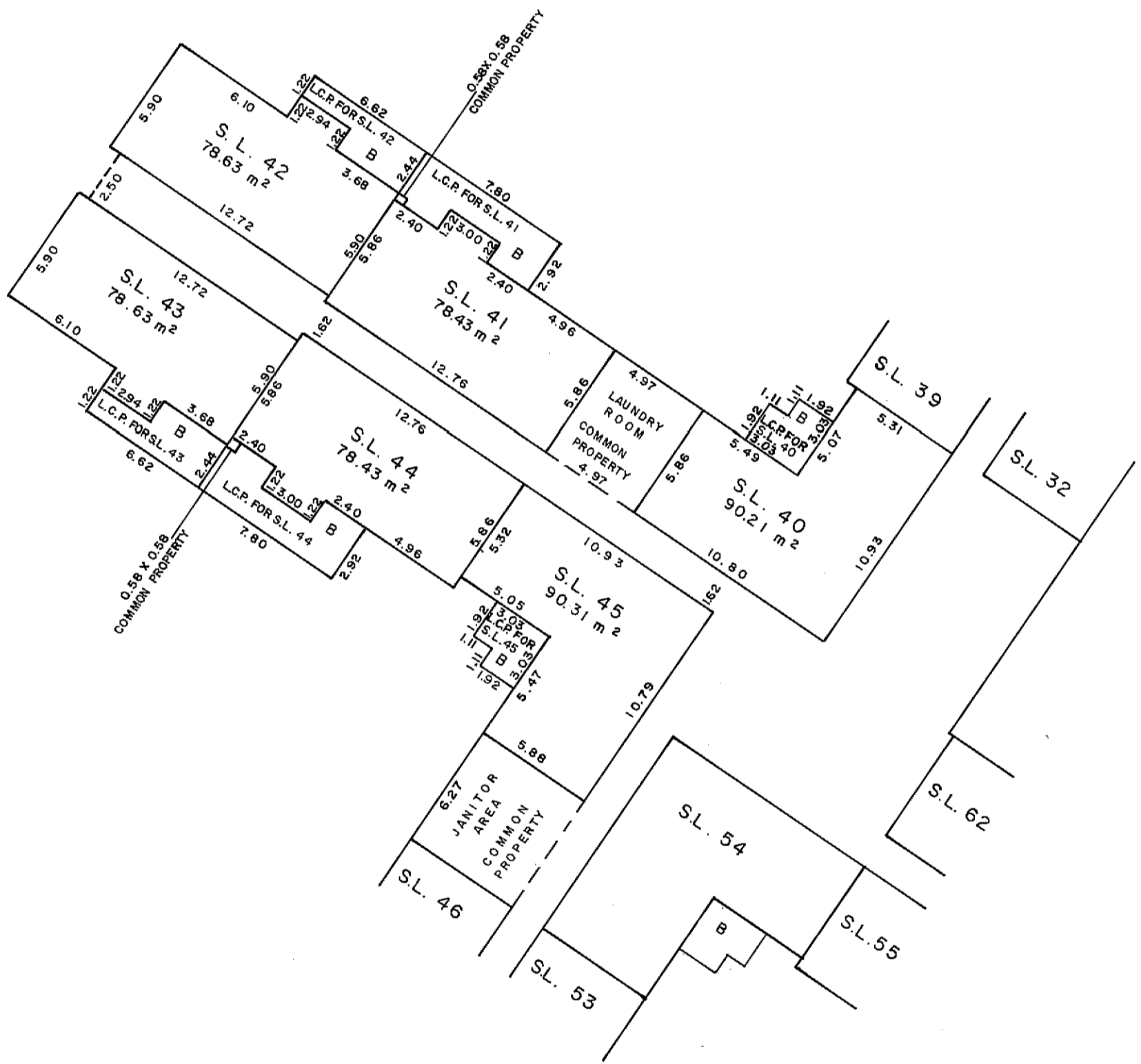
STRATA PLAN **PG 85**

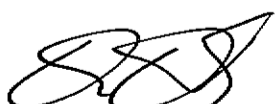


  
 D.A. DUFFY, B.C.L.S.  
 This 3 day of DEC., 1981.

SECOND FLOOR  
NORTHWEST WING  
STRATA LOTS 40 TO 45  
SCALE: 1 : 250

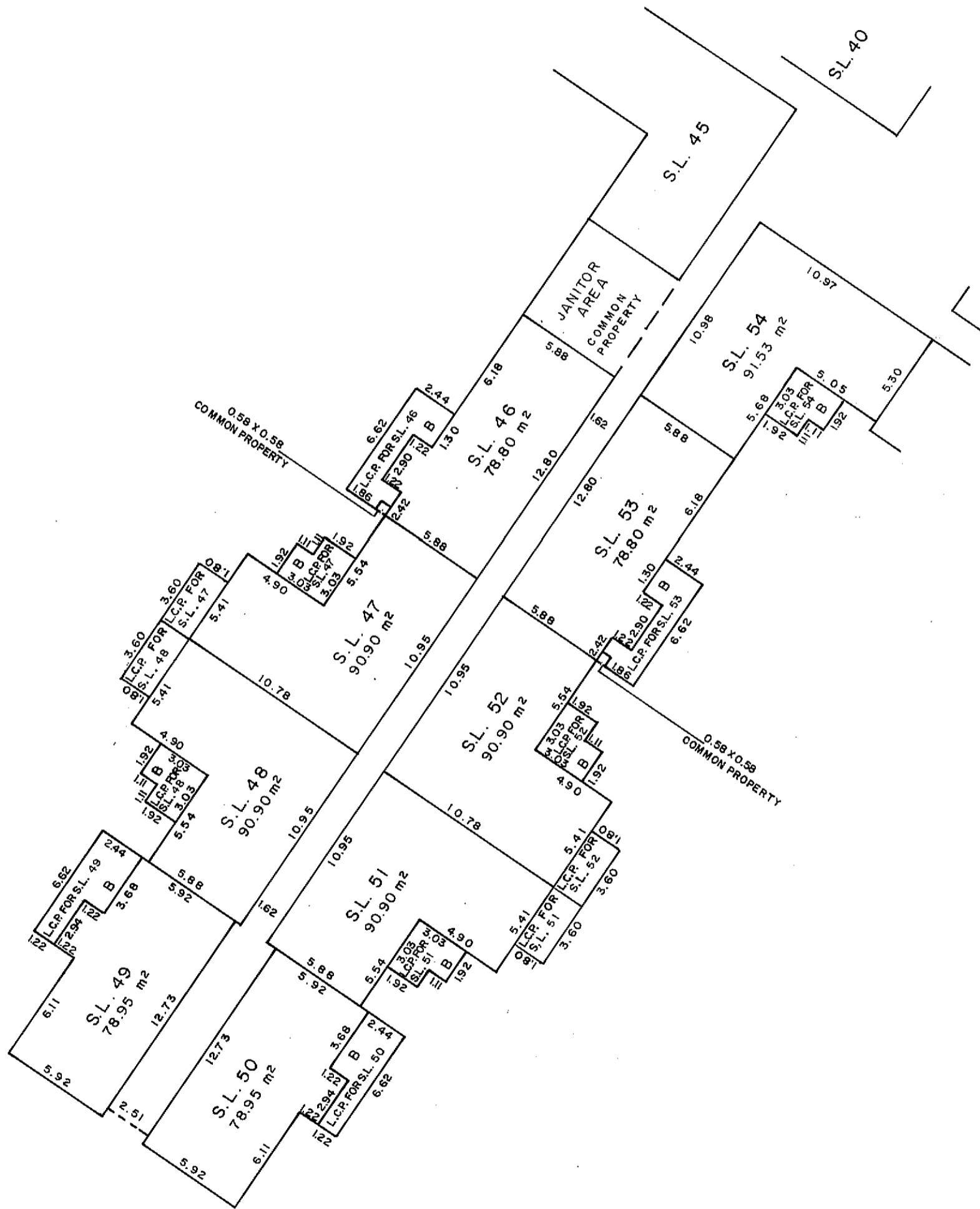
STRATA PLAN PG 85




  
 D.A. DUFFY, B.C.S. 18.  
 This 3 day of Dec., 1981.

# STRATA PLAN PG 85

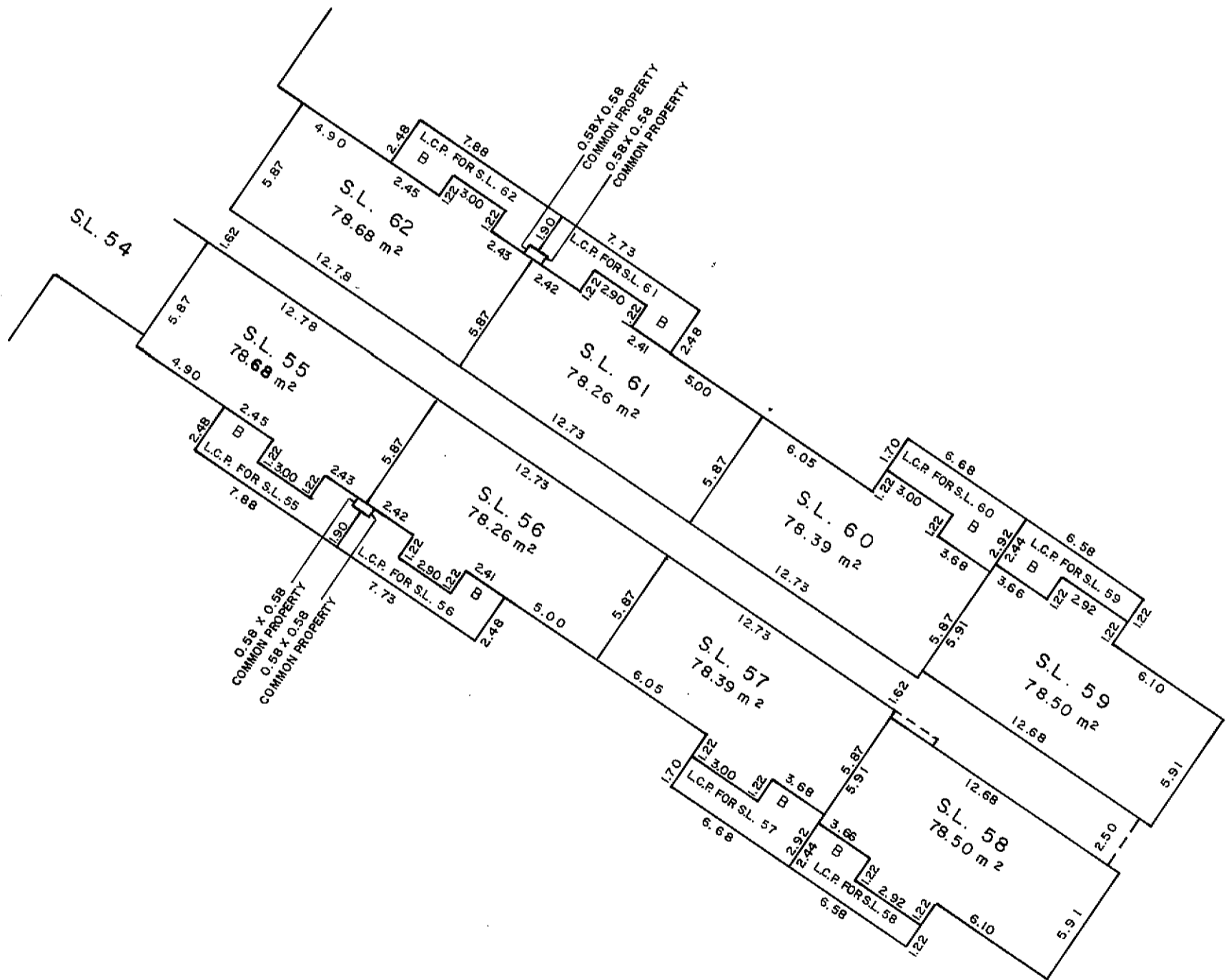
SECOND FLOOR  
SOUTHWEST WING  
STRATA LOTS 46 TO 54  
SCALE : 1 : 250




  
 D. A. DUFFY, B.C.L.S.  
 This 3 day of DEC., 1981.

STRATA PLAN **PG 85**

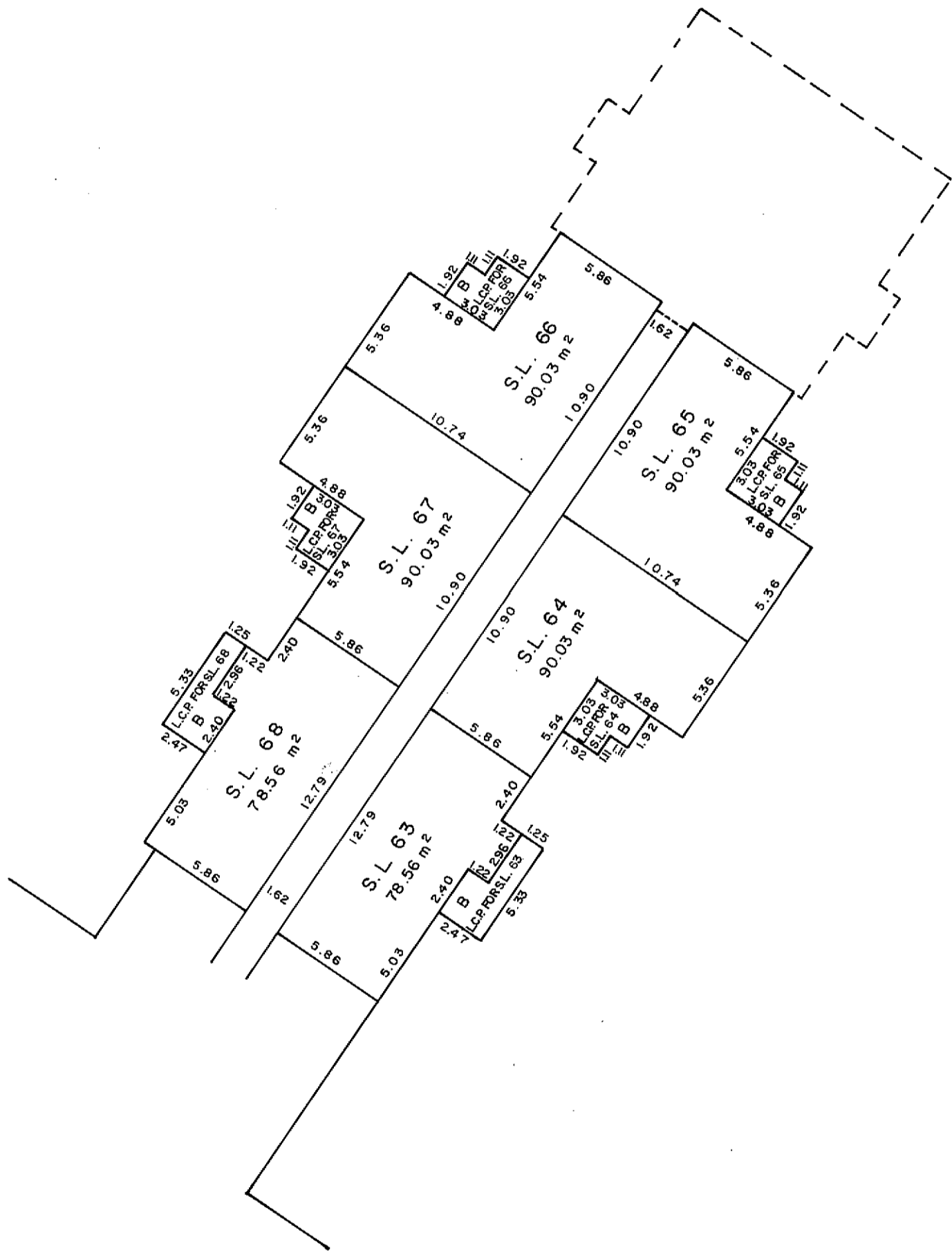
SECOND FLOOR  
SOUTHEAST WING  
STRATA LOTS 55 TO 62  
SCALE: 1 : 250




  
 D. A. DUFFY, B.S.L.S.  
 This 3 day of DEC, 1981.

STRATA PLAN **PG 85**

THIRD FLOOR  
NORTHEAST WING  
STRATA LOTS 63 TO 68  
SCALE : 1 : 250

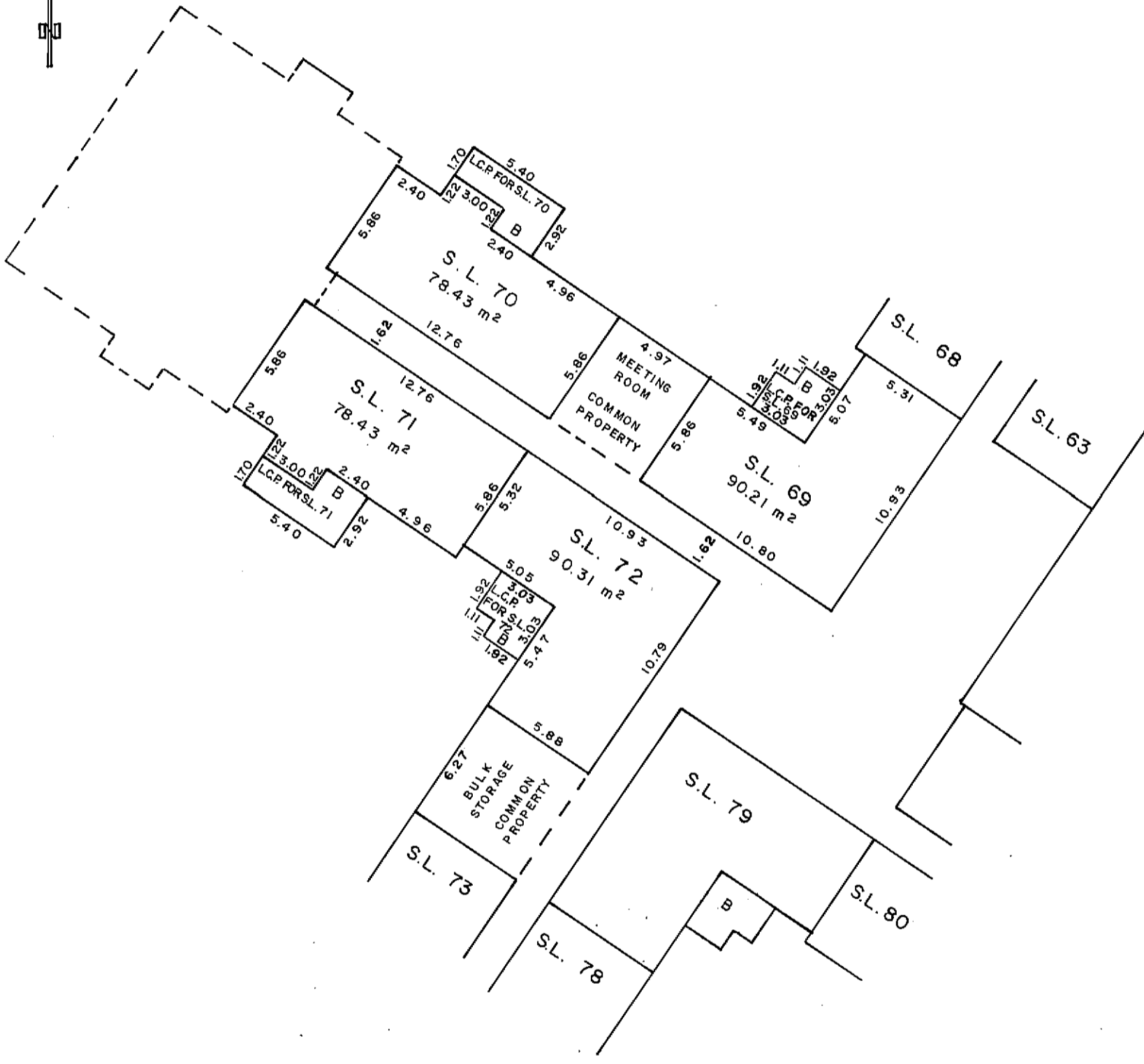


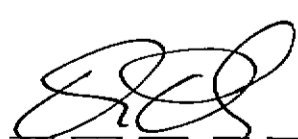
  
 D. A. DUFFY, P.E.L.S.  
 This 3 day of DEC., 1981.

STRATA PLAN PG 85

THIRD FLOOR  
NORTHWEST WING  
STRATA LOTS 69 TO 72

SCALE: 1 : 250

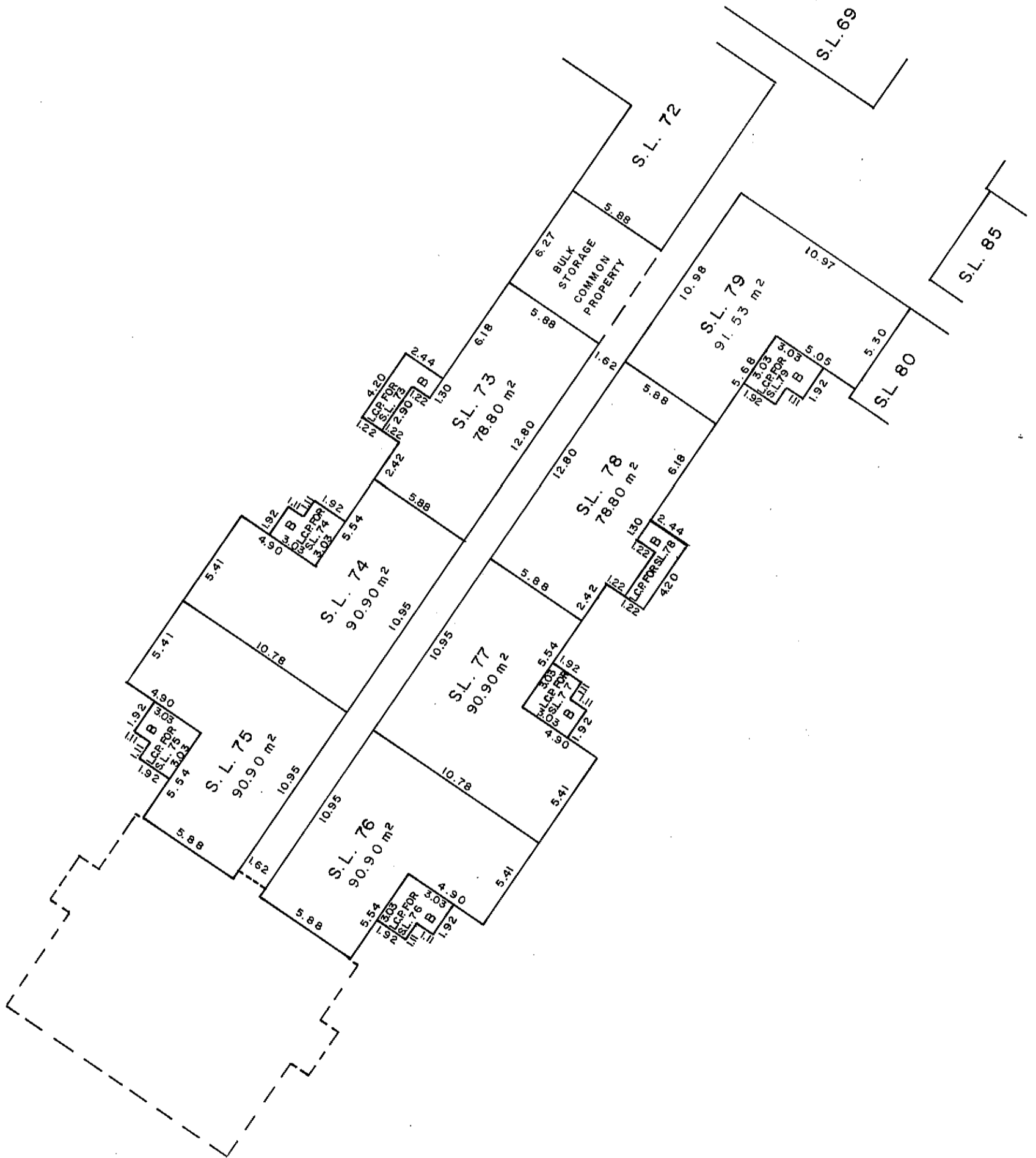


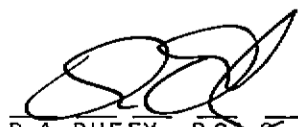
  
 D. A. DUFFY, B.C.L.S.  
 This 3 day of DEC, 1981.



STRATA PLAN **PG 85**

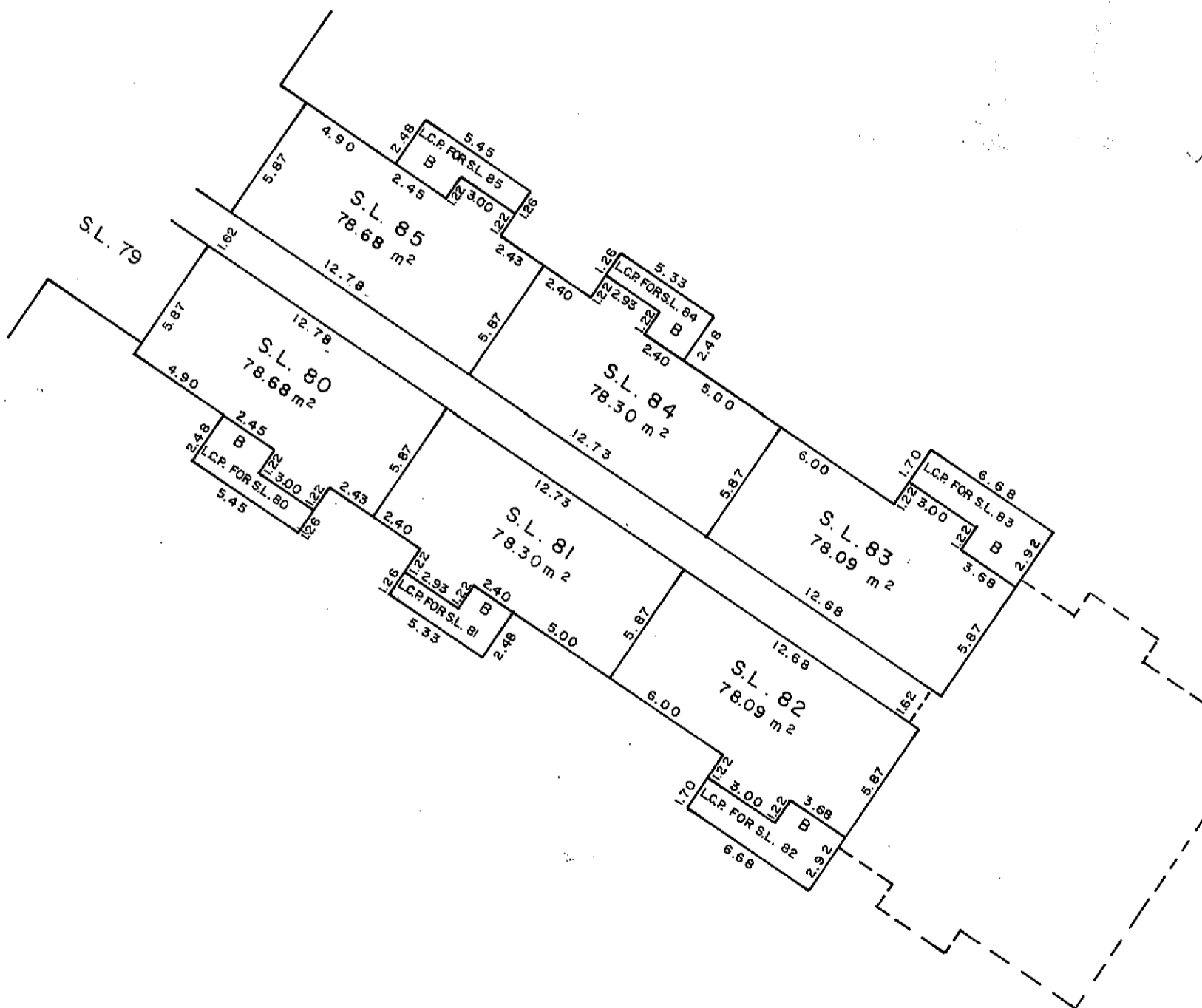
THIRD FLOOR  
SOUTHWEST WING  
STRATA LOTS 73 TO 79  
SCALE : 1 : 250




  
D. A. DUFFY, B.C.L.S.  
This 3 day of DEC., 1981.

STRATA PLAN PG 85

THIRD FLOOR  
SOUTHEAST WING  
STRATA LOTS 80 TO 85  
SCALE : 1 : 250



  
 D.A. DUFFY, B.C.L.S.  
 This 3 day of DEC, 1981.



