

26 FF-226

FIRST SHEET  
SHEET 1 OF 5 SHEETS

STRATA PLAN OF  
LOT 2, PLAN 23493  
DISTRICT LOT 2508  
CARIBOO DISTRICT— BRITISH COLUMBIA

SCALE: 1 : 500

NOTE: Distances are in metres.  
Bearings are astronomic, derived from Plan 23493.

LEGEND: SQ. M. denotes square metres.

STRATA PLAN **PG 69**

Deposited and registered in the Land  
Title Office at Prince George, B.C.  
this 23<sup>rd</sup> day of October, 1981.

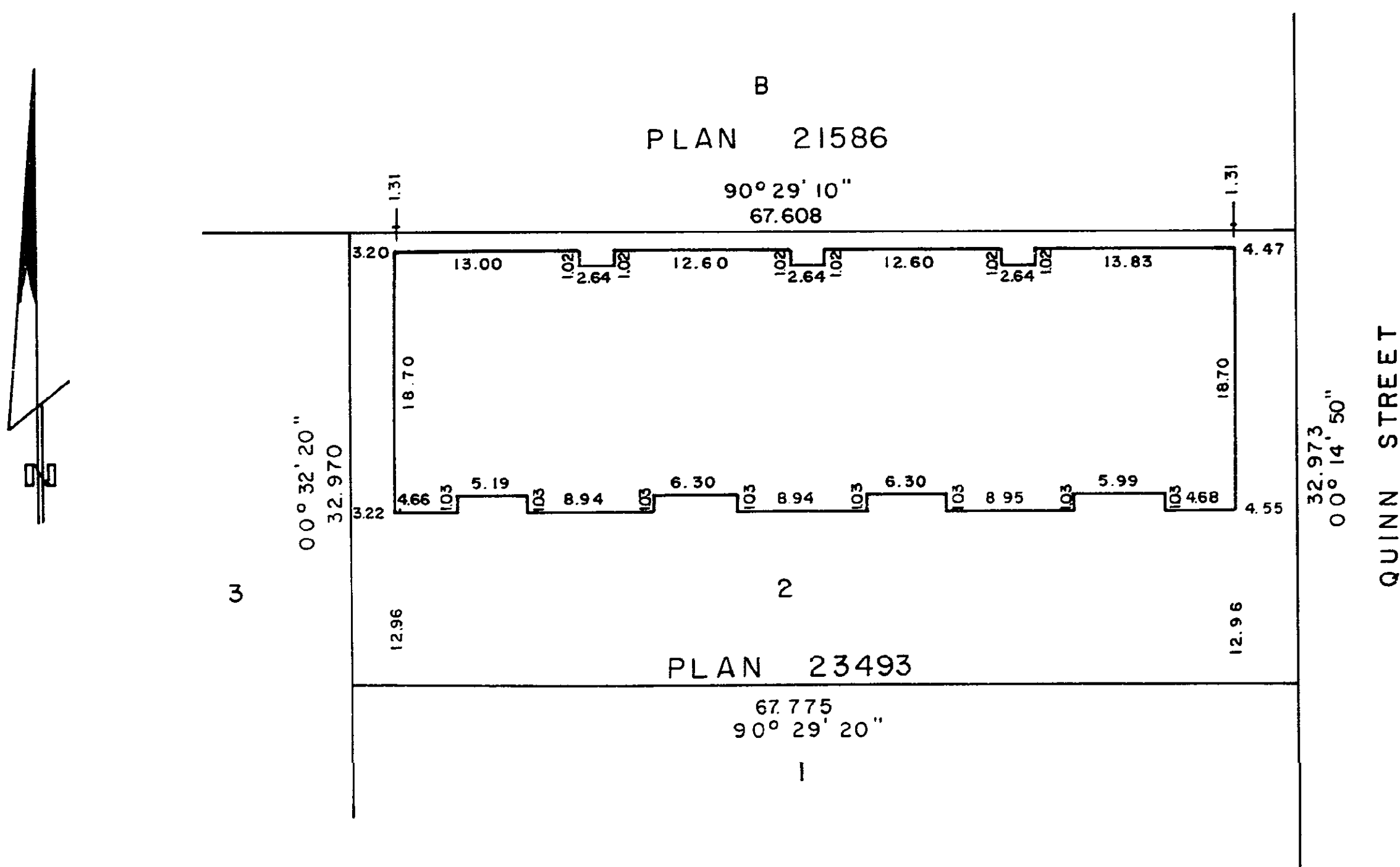
E. J. Power per: sg  
Registrar

CIT R 44095 to R 44102

CIVIC ADDRESS:

2135 QUINN STREET  
PRINCE GEORGE, B.C.

"CITY OF PRINCE GEORGE"



The address for service of documents  
on this Strata Corporation is:

1102 FRANCOIS CRESCENT  
PRINCE GEORGE, B. C.  
V2M 4H1

I, RONALD L. JOHNS, of the City of Prince  
George a British Columbia Land Surveyor  
hereby certify that the buildings erected  
on the parcel described above are wholly within  
the external boundaries of that parcel.

VIDA ENTERPRISES LTD.

Ronald L. Johns  
Authorized Signatory

Ronald L. Johns  
B.C.L.S.

Authorized Signatory

Dated at Prince George, B.C. this  
11<sup>th</sup> day of December, 1980.

W. D. USHER & ASSOCIATES  
LAND SURVEYORS  
PRINCE GEORGE — B. C.  
oc 22 12250

SECOND SHEET  
SHEET 2 OF 5 SHEETS

STRATA PLAN **PG 69**

LOT NO.	SHEET NO.	FORM 1	FORM 2	FORM 3
		SCHEDULE OF UNIT ENTITLEMENT	SCHEDULE OF INTEREST UPON DESTRUCTION	SCHEDULE OF VOTING RIGHTS
1	3	123685	126712	
2	3	127469	126713	
3	3	127285	126713	
4	3	127285	126712	
5	3	127284	126712	
6	3	127284	126712	
7	3	127284	126712	
8	3	112424	113014	
AGGREGATE		1,000,000	1,000,000	8

Accepted as to forms 1, 2 and 3.  
This 3<sup>rd</sup> day of September, 1981.

John Power  
Superintendent of Insurance

R. L. Johns  
R. L. JOHNS, B.C.L.S.  
This 11<sup>th</sup> day of December, 1980.

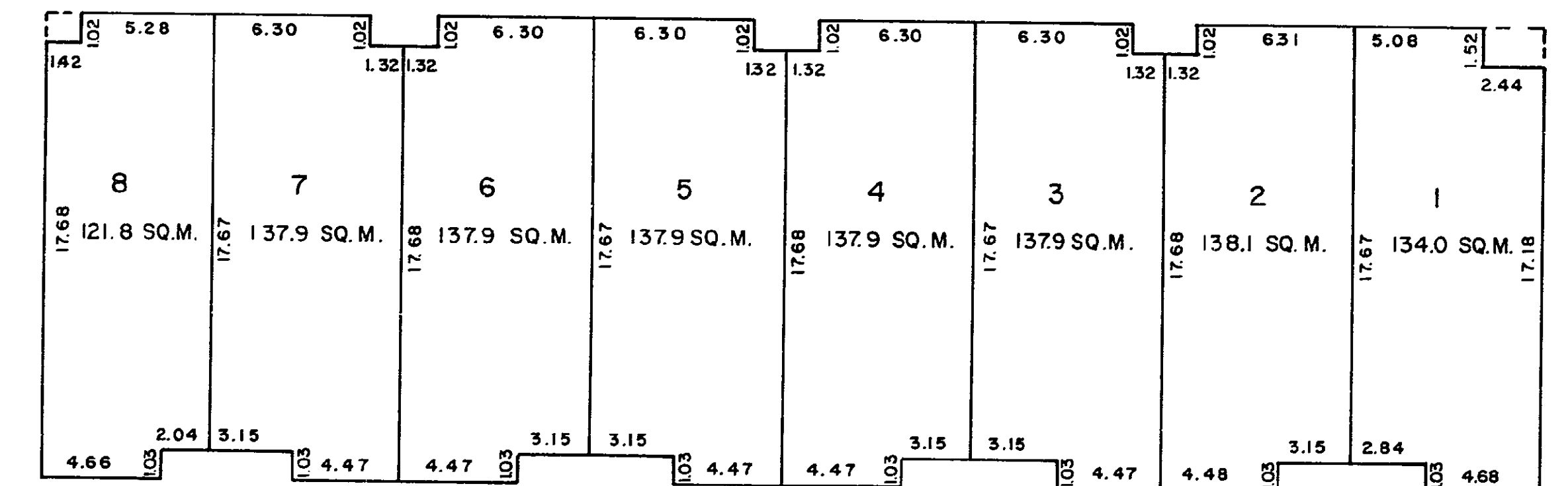
W. D. USHER & ASSOCIATES  
LAND SURVEYORS  
PRINCE GEORGE — B. C.  
12250

SHEET 3 OF 5 SHEETS

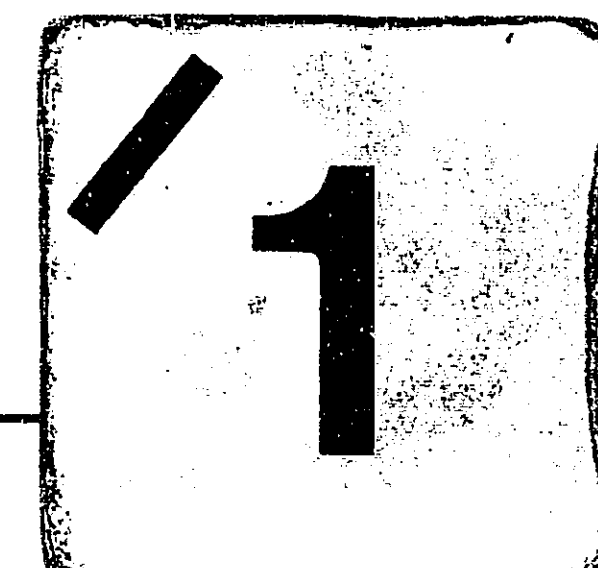
STRATA PLAN **PG 69**

STRATA LOTS 1 - 8

SCALE: 1 : 300



R. L. Johns  
R. L. JOHNS, B. C. L. S.  
This 11<sup>th</sup> day of December, 1980.



W. D. USHER & ASSOCIATES  
LAND SURVEYORS  
PRINCE GEORGE — B. C.  
12250