

26-FF-226

STRATA PLAN OF LOT 204, PLAN 20258 DISTRICT LOT 2507 CARIBOO DISTRICT-BRITISH COLUMBIA

SHEET 1 SHEET 1 OF 11 SHEETS

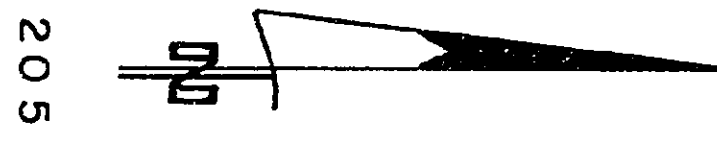
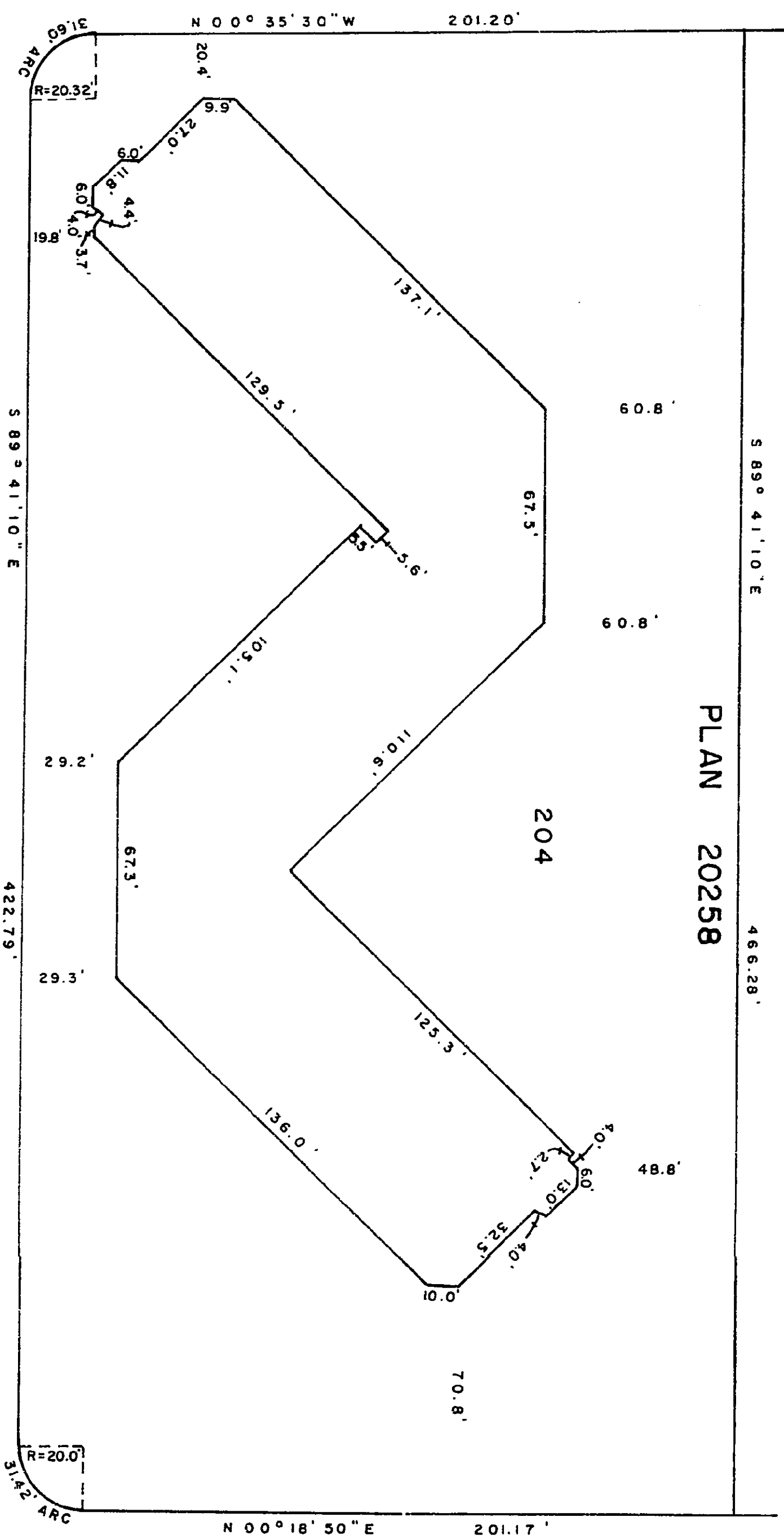
SCALE: 1" = 50' LEGEND: "B" denotes balcony. SQ. FT. denotes square feet.

Deposited and registered in the Land Registry Office at Prince George, B.C. this 29 day of SEPT, 1975

STRATA PLAN PG 6

Registrar E. T. SCHOOLEY H30424

PANORAMA PLACE 4288-15TH AVENUE PRINCE GEORGE - B.C.



APPROVED MANAGER

The address for service of documents on the Strata Corporation is: Wilson King & Company 444 Victoria Street Prince George - B.C.

Bank of Montreal Assistant Credit Manager Credit Manager

I, DONALD A. DUFFY of the City of Prince George, a British Columbia Land Surveyor, hereby certify that the building erected on the parcel described above is wholly within the external boundaries of that parcel.

ASPRO VENTURES LTD. Secretary

Approved by the City of Prince George this 29th day of OCT, 1975

EE Olet Approving Officer

W. D. USHER & ASSOCIATES LAND SURVEYORS PRINCE GEORGE - B.C. 5712

Dated at Prince George, B.C. this 13 day of SEPT, 1975

SHEET 2 OF 11 SHEETS

STRATA PLAN PG 6

STRATA TITLES ACT

Table with columns: LOT NO., SHEET NO., FORM 1 SCHEDULE OF UNIT ENTITLEMENT, FORM 2 SCHEDULE OF INTEREST UPON DESTRUCTION, FORM 3 SCHEDULE OF VOTING RIGHTS. Includes an AGGREGATE row at the bottom.

APPROVED MANAGER

STATUTORY DECLARATION

I the undersigned do solemnly declare that I the undersigned am the duly authorized agent of the owner-developer. The strata plan is entirely for residential use.

I make this solemn declaration conscientiously believing it to be true, and knowing that it is of the same force and effect as if made under oath.

Declared before me this 31 day of Oct, 1975

Notary Public signatures

Accepted as to forms 1, 2 and 3.

Superintendent of Insurance signature

ASTRO VENTURES LTD. signature

W. D. USHER & ASSOCIATES LAND SURVEYORS PRINCE GEORGE - B.C. 5712

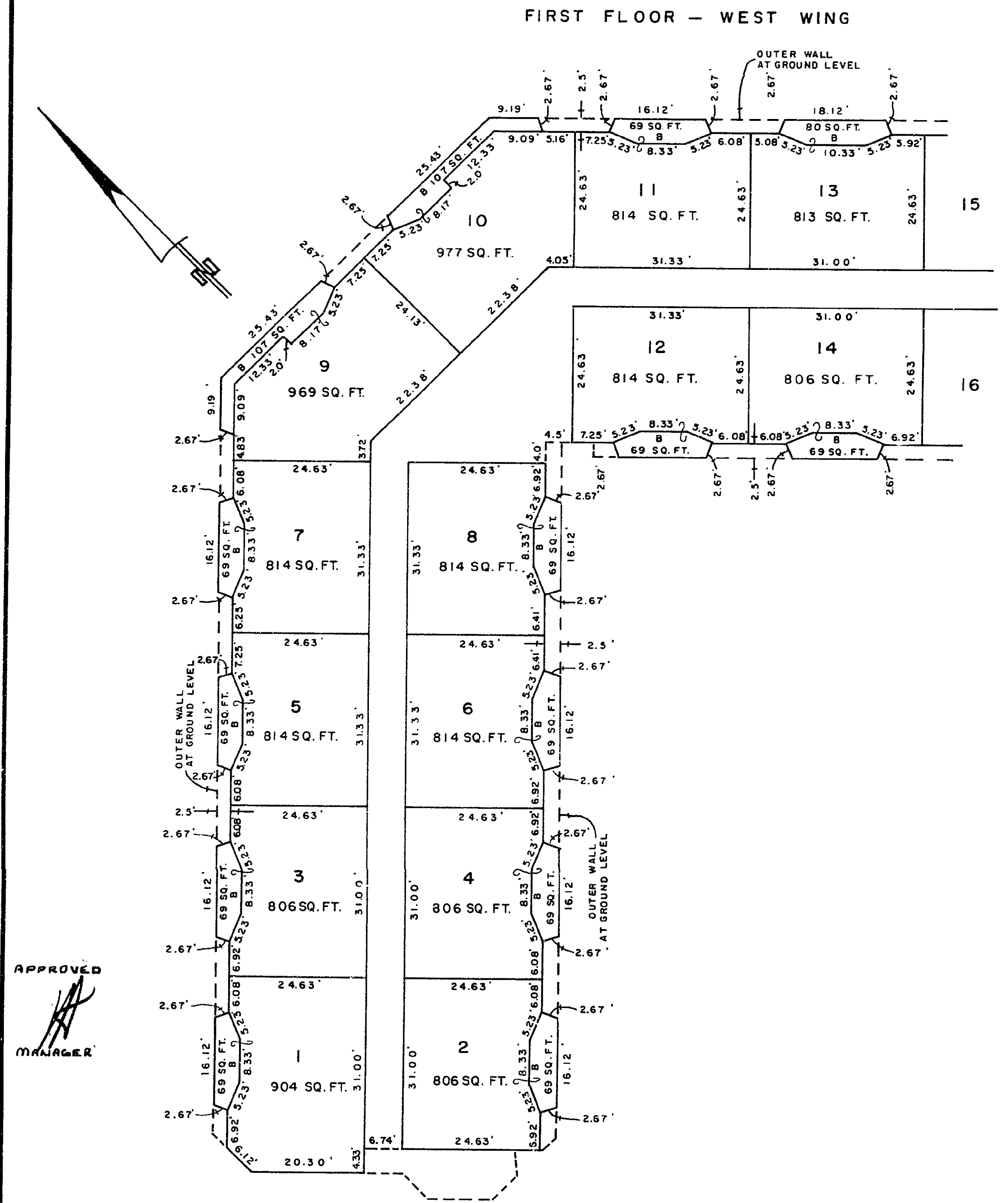
SHEET 3 OF 11 SHEETS

FIRST FLOOR - WEST WING

STRATA PLAN PG 6

STRATA LOTS 1-14

SCALE: 1" = 20'



APPROVED MANAGER

D.A. DUFFY, B.C.L.S. 13 day of SEPT, 1975

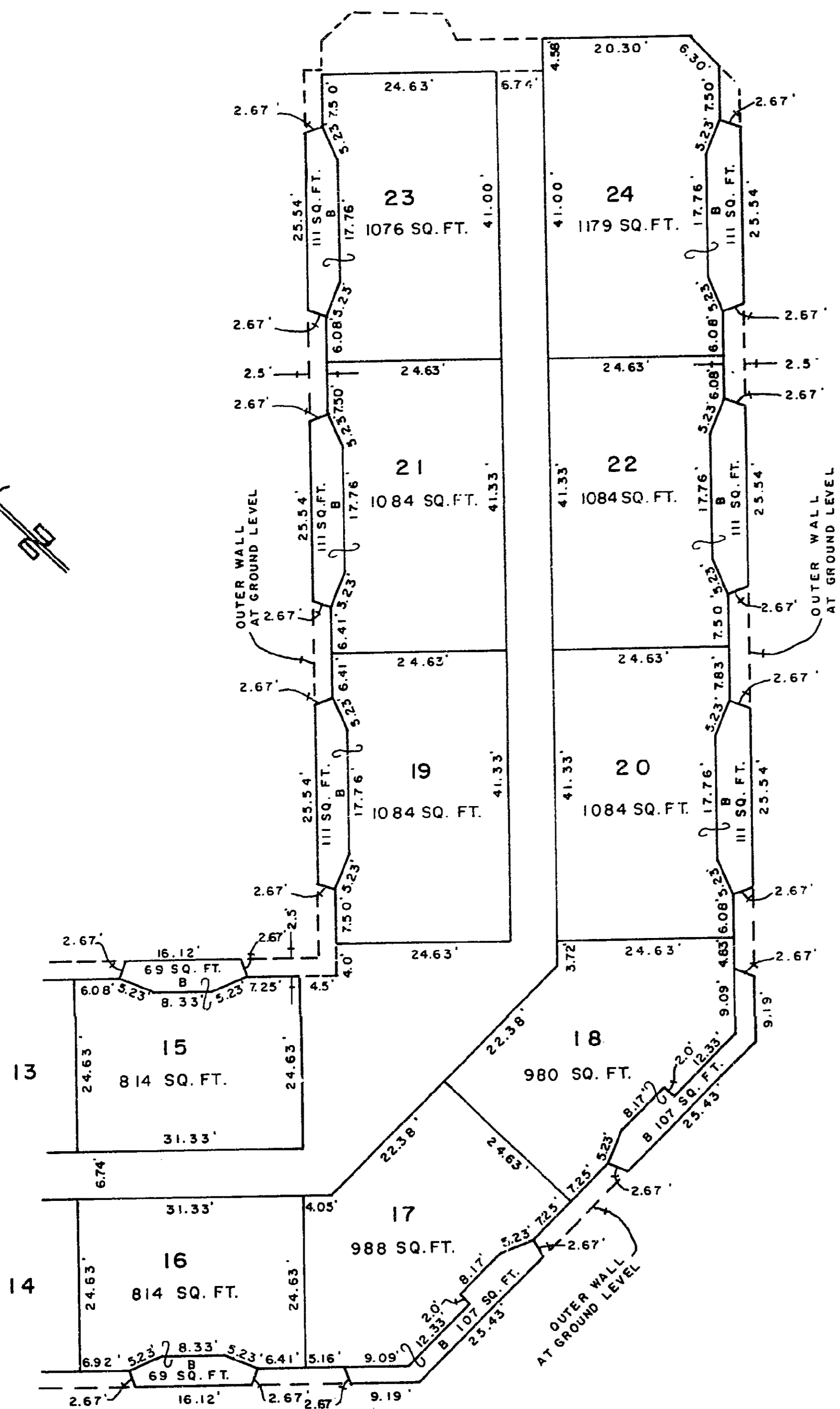
W.D. USHER & ASSOCIATES LAND SURVEYORS PRINCE GEORGE - B.C. 5712



FIRST FLOOR - EAST WING  
STRATA LOTS 15 - 24  
SCALE: 1" = 20'

STRATA PLAN P.G.6

FIRST FLOOR - EAST WING



APPROVED  
MANAGER

*D.A. Duffy*  
D.A. DUFFY, B.C.L.S.

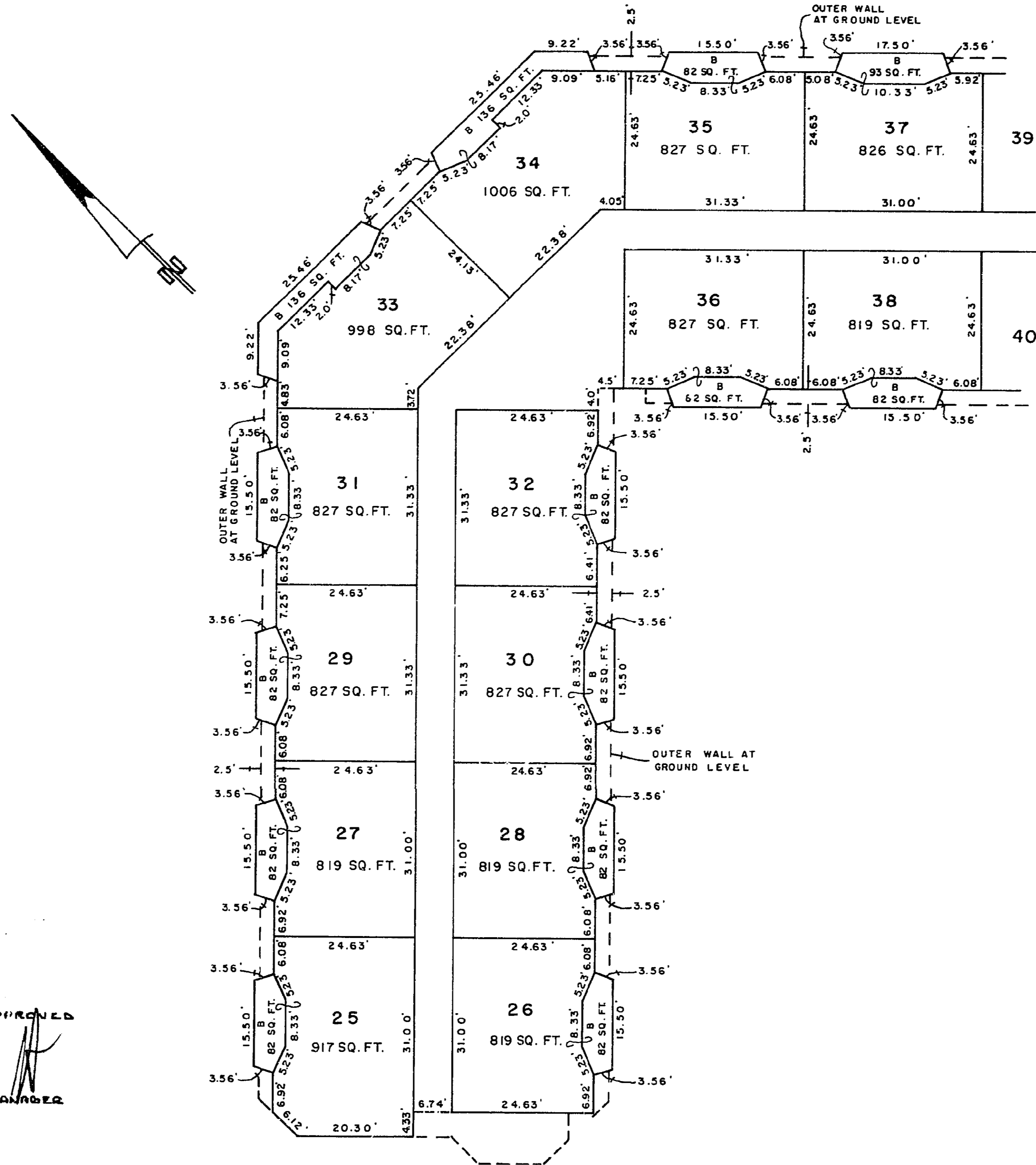
13 day of SEPT., 1974.

W.D. USHER & ASSOCIATES  
LAND SURVEYORS  
PRINCE GEORGE - B.C.

SECOND FLOOR - WEST WING  
STRATA LOTS 25 - 38  
SCALE: 1" = 20'

STRATA PLAN P.G.6

SECOND FLOOR - WEST WING



APPROVED  
MANAGER

*D.A. Duffy*  
D.A. DUFFY, B.C.L.S.

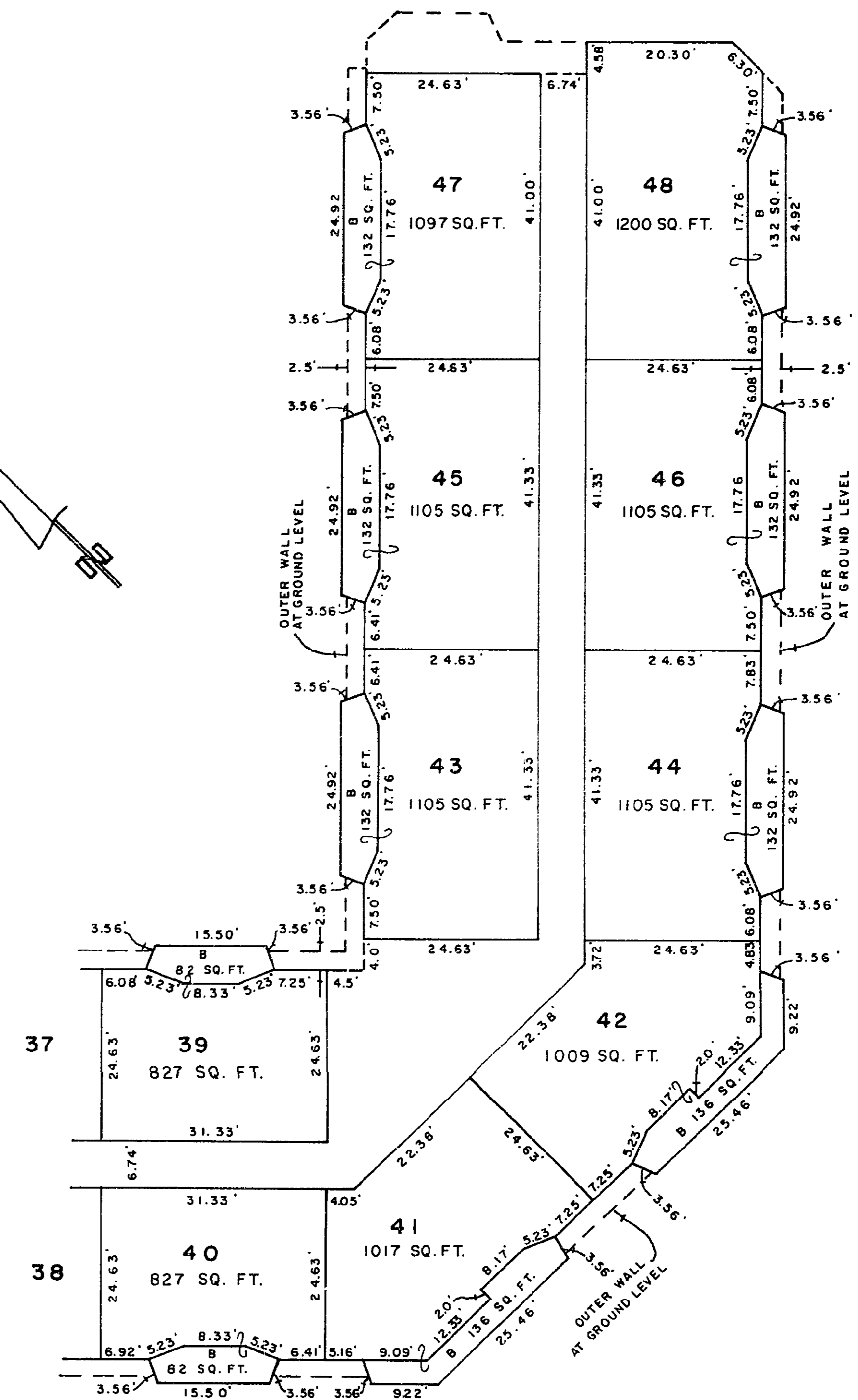
13 day of SEPT., 1974.

W.D. USHER & ASSOCIATES  
LAND SURVEYORS  
PRINCE GEORGE - B.C.

SECOND FLOOR - EAST WING  
STRATA LOTS 39 - 48  
SCALE: 1" = 20'

STRATA PLAN P.G.6

SECOND FLOOR - EAST WING



APPROVED  
MANAGER

*D.A. Duffy*  
D.A. DUFFY, B.C.L.S.

13 day of SEPT., 1974.

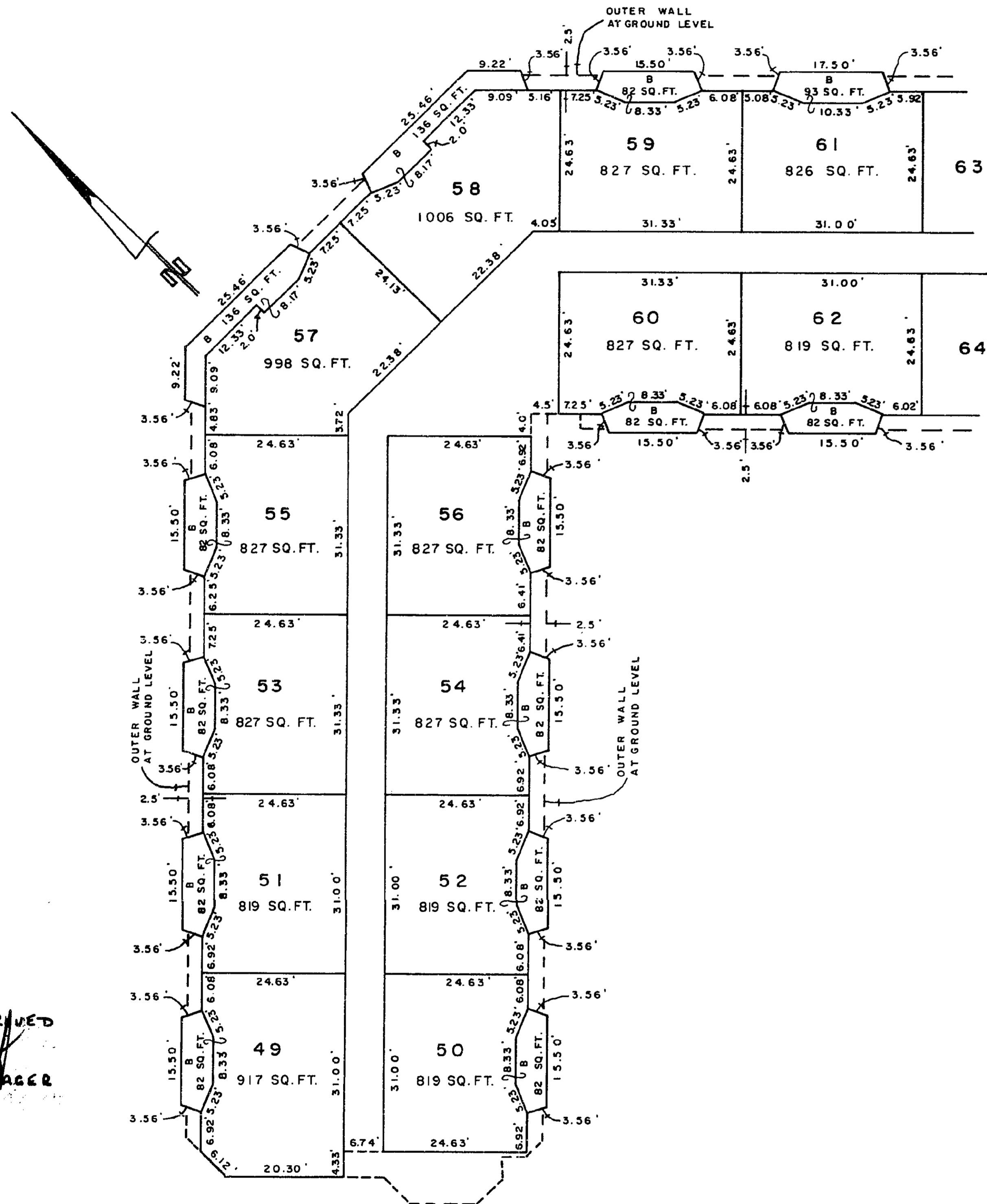
W.D. USHER & ASSOCIATES  
LAND SURVEYORS  
PRINCE GEORGE - B.C.

2

THIRD FLOOR— WEST WING  
STRATA LOTS 49 - 62  
SCALE: 1" = 20'

STRATA PLAN P.G. 6

THIRD FLOOR— WEST WING



APPROVED  
MANAGER

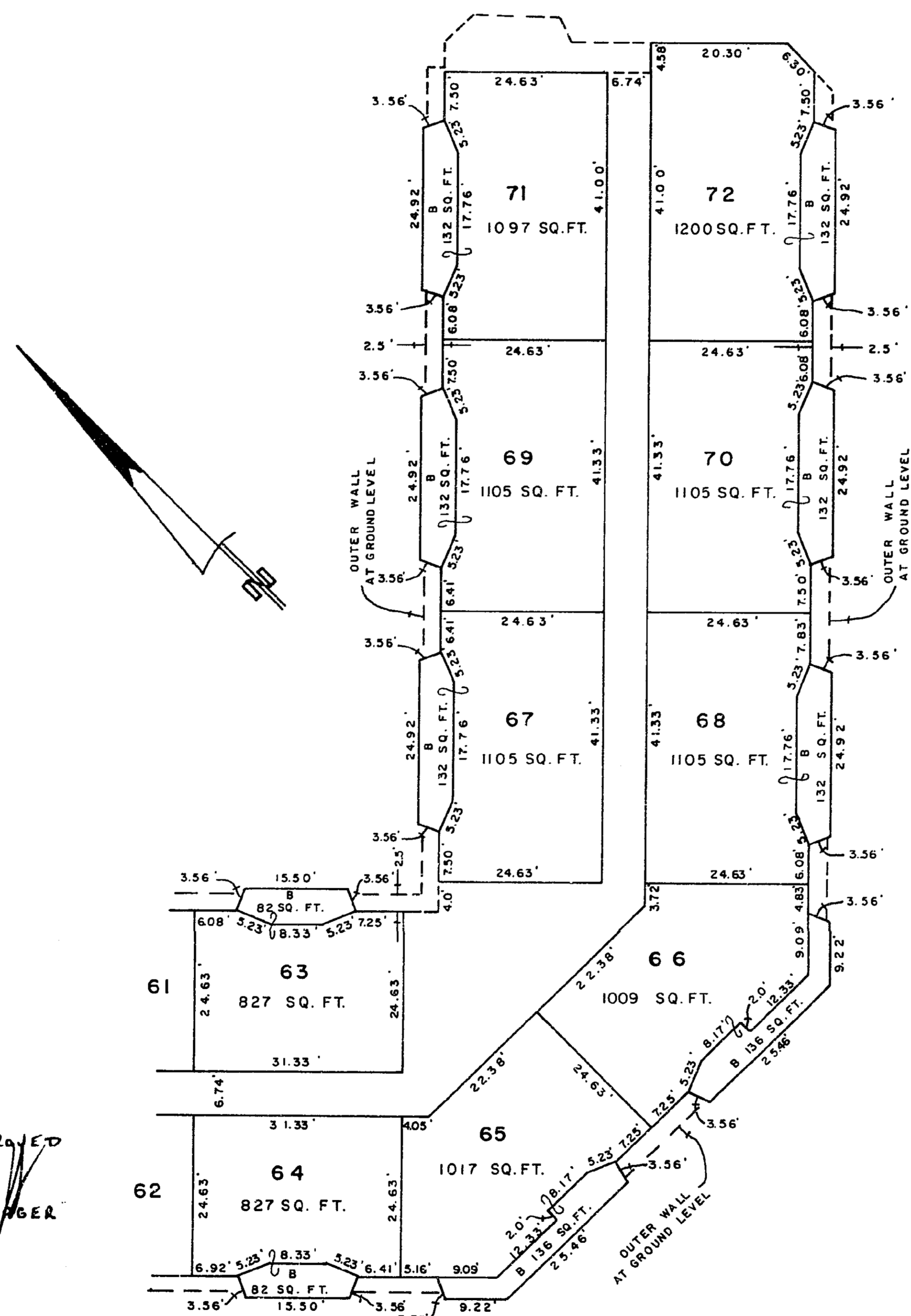
*[Signature]*  
D.A. DUFFY, B.C.L.S.  
- 13 - day of SEPT., 1974

W.D. USHER & ASSOCIATES  
LAND SURVEYORS  
PRINCE GEORGE — B. C.  
5712

THIRD FLOOR— EAST WING  
STRATA LOTS 63 - 72  
SCALE: 1" = 20'

STRATA PLAN P.G. 6

THIRD FLOOR— EAST WING



APPROVED  
MANAGER

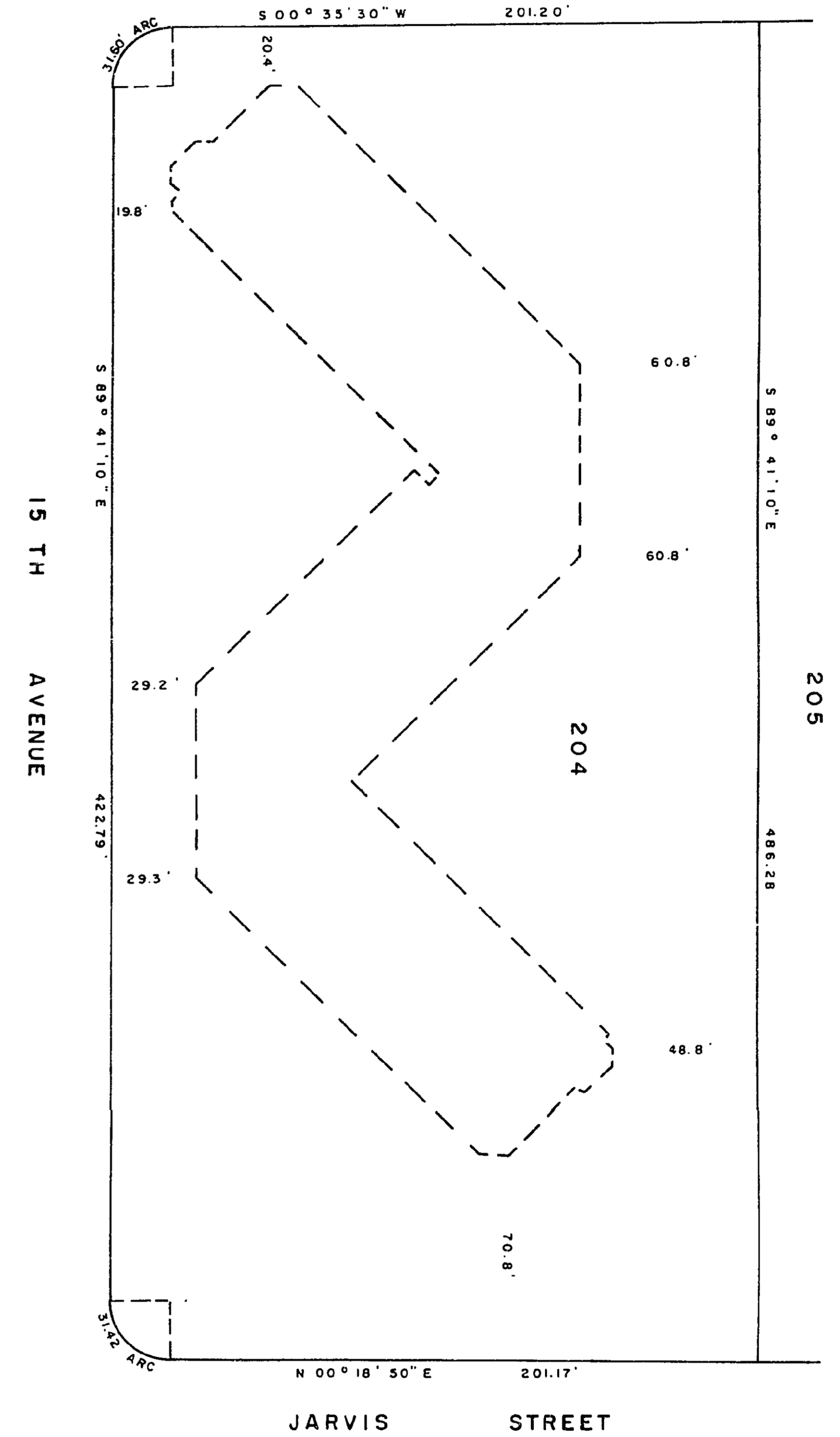
*[Signature]*  
D.A. DUFFY, B.C.L.S.  
- 13 - day of SEPT., 1974

W.D. USHER & ASSOCIATES  
LAND SURVEYORS  
PRINCE GEORGE — B. C.

BASEMENT FLOOR  
ALL COMMON PROPERTY  
SCALE: 1" = 50'

STRATA PLAN P.G. 6

TABOR BOULEVARD



*[Signature]*  
MANAGER

*[Signature]*  
D.A. DUFFY, B.C.L.S.  
- 13 - day of SEPT., 1974

W.D. USHER & ASSOCIATES  
LAND SURVEYORS  
PRINCE GEORGE — B. C.  
5712

3