

26-226

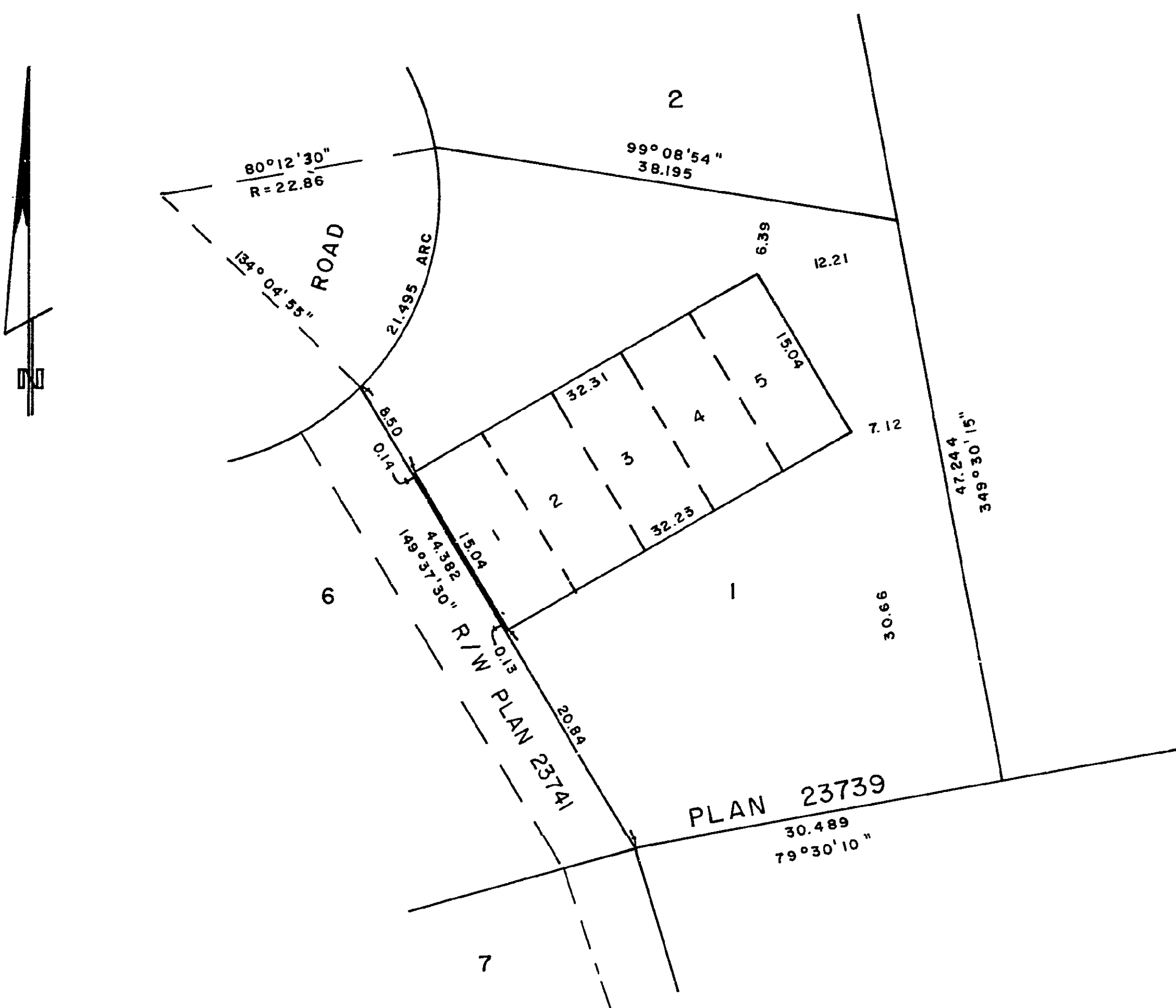
STRATA PLAN OF  
LOT 1, PLAN 23739  
DISTRICT LOT 751  
CARIBOO DISTRICT-BRITISH COLUMBIA

SCALE: 1 : 500

Address of development:  
9208 NATIONAL PLACE  
PRINCE GEORGE — B. C.

STRATA PLAN P.G. 40  
Deposited and registered in the Land  
Title Office at Prince George, B.C.  
this 29 day of December, 1980.

E. J. RAVEN  
Registrar  
CP P-32984 Per: CT



The address for service of documents  
on this Strata Corporation is:

C/O HOPE, HEINRICH & HANSEN  
1598 - 6TH AVENUE  
PRINCE GEORGE — B.C.

I hereby certify that the construction of  
the building situated on Lot 1, Plan  
23739, District Lot 751, Cariboo District  
has been approved for Strata Plan  
development.  
This 16 day of APRIL, 1980

C. E. Olat  
Approving Officer, City of Prince George  
Reapproved Oct 24, 1980  
CEOlat

W. D. USHER & ASSOCIATES  
LAND SURVEYORS  
PRINCE GEORGE — B. C.  
ME 51 11390

I, DONALD A. DUFFY, of the City of Prince  
George a British Columbia Land Surveyor,  
hereby certify that the buildings erected  
on the parcel described above are wholly within  
the external boundaries of that parcel.

CONVEYOR INVESTMENTS LTD.

[Signature]  
Authorized Signatory

[Signature]  
Authorized Signatory

Dated at Prince George, B.C. this  
17 day of MARCH, 1980.

B. C. L. S.

STRATA PLAN P.G. 40

LOT NO.	SHEET NO.	FORM 1	FORM 2	FORM 3
		SCHEDULE OF UNIT ENTITLEMENT	SCHEDULE OF INTEREST UPON DESTRUCTION	SCHEDULE OF VOTING RIGHTS
1	3	1	1	1
2	3	1	1	1
3	3	1	1	1
4	3	1	1	1
5	3	1	1	1
AGGREGATE		5	5	5

I, the undersigned do solemnly declare that:  
I, the undersigned am the duly authorized agent of the owner-developer.  
I make this solemn declaration conscientiously believing it to be true  
and knowing that it is of the same force and effect as if made under oath.

Declared before me at Prince George in the Province of  
British Columbia. This 6th day of NOVEMBER, 1980.

A Commissioner for taking Affidavits within British Columbia.

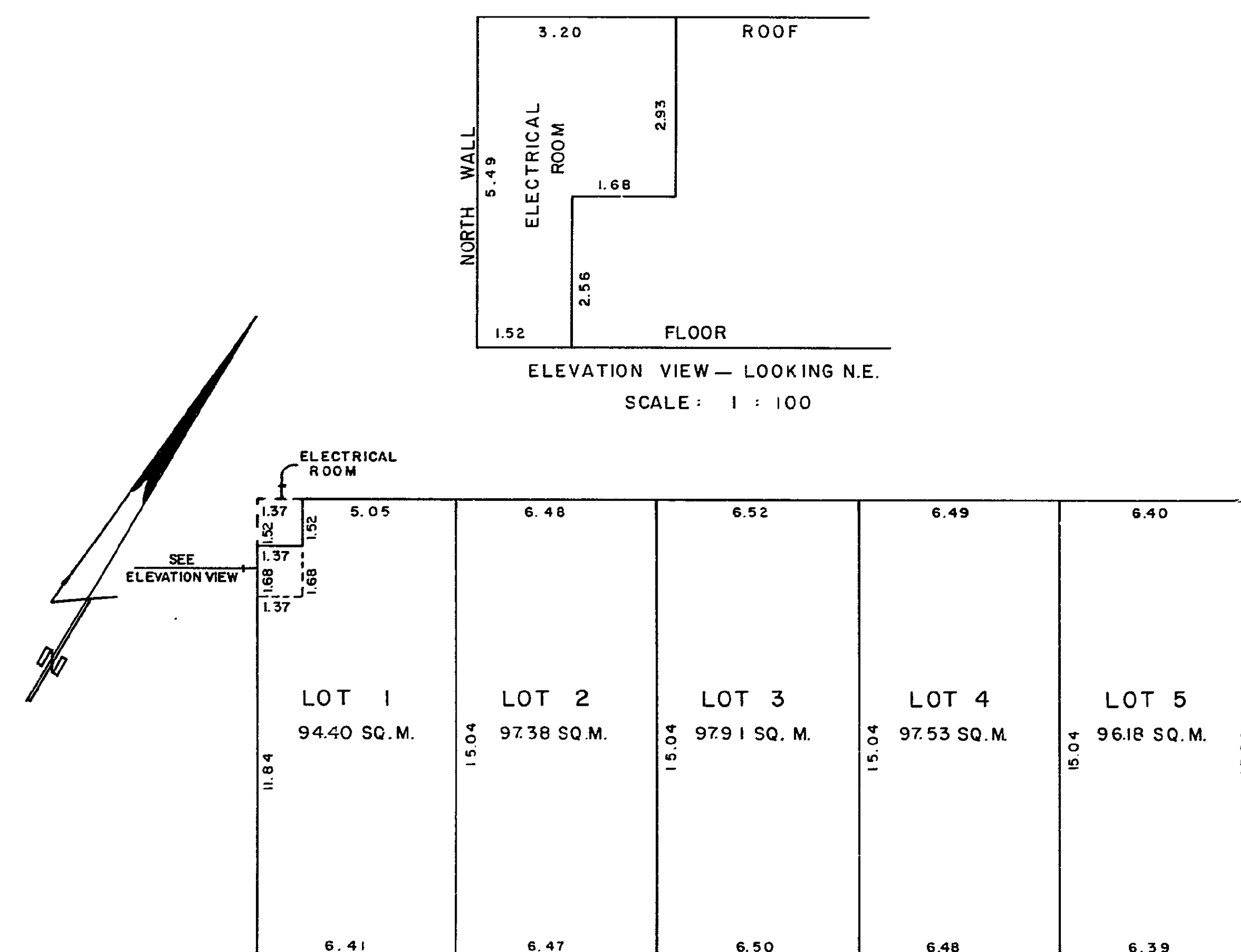
Accepted as to forms 1, 2 and 3.  
this 16th day of December, 1980

[Signature]  
for Superintendent of Insurance.

W. D. USHER & ASSOCIATES  
LAND SURVEYORS  
PRINCE GEORGE — B. C.  
11390

STRATA PLAN P.G. 40

LOTS 1 TO 5 INCLUSIVE  
SCALE: 1 : 200



[Signature]  
D. A. DUFFY, B.C.L.S.  
— 17 — day of MARCH, 1980

W. D. USHER & ASSOCIATES  
LAND SURVEYORS  
PRINCE GEORGE B. C.  
11390