

# 26-FF-226

STRATA PLAN OF  
LOT 6, PLAN 23739  
DISTRICT LOT 751  
CARIBOO DISTRICT-BRITISH COLUMBIA

SCALE: 1 : 500

NOTE: Sq.M. denotes square metre.

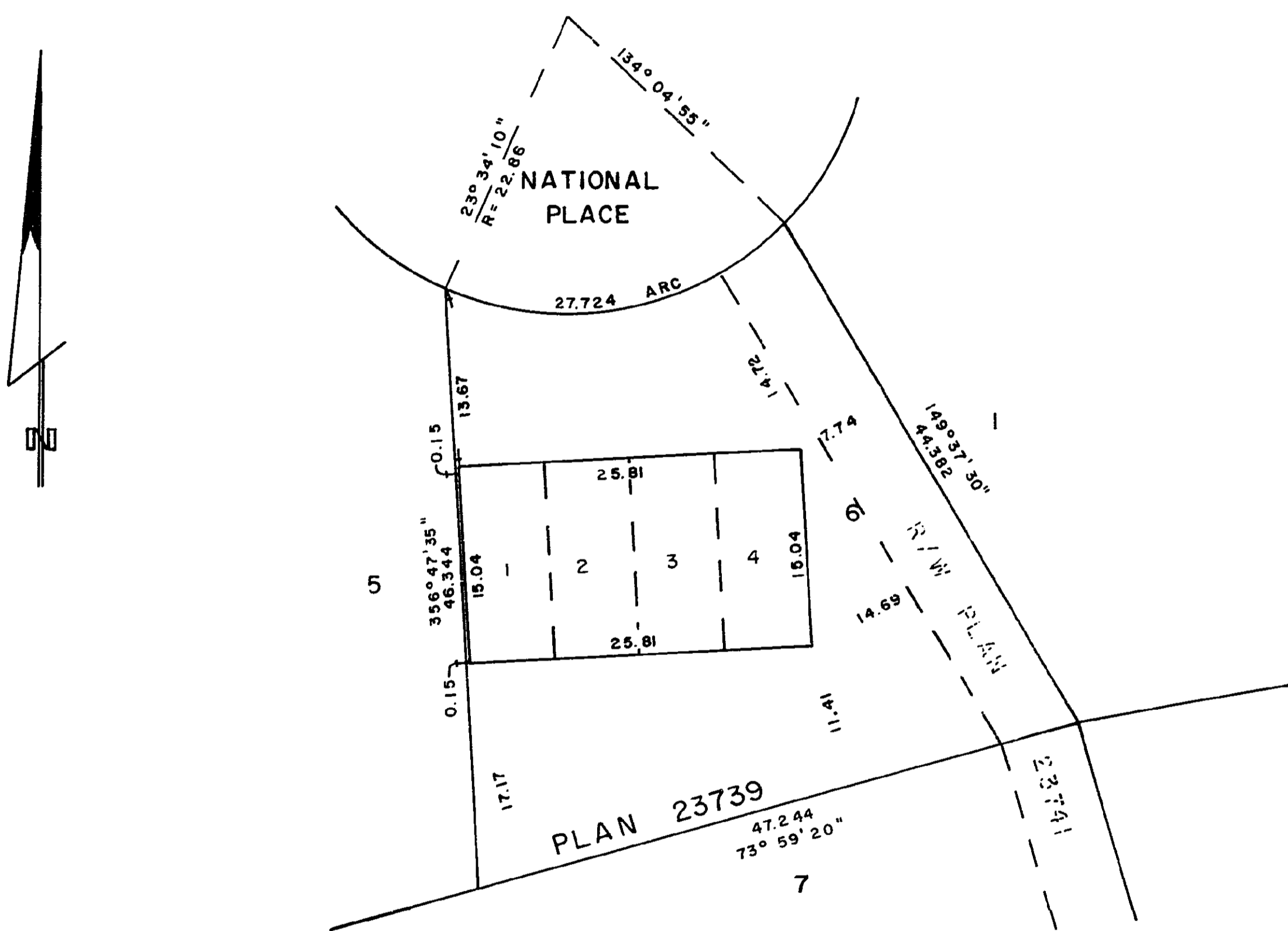
Address of development:  
9231 National Place  
Prince George, British Columbia

STRATA PLAN P.G. 39  
Deposited and registered in the Land  
Title Office at Prince George, B.C.  
this 29 day of February, 1980.

E. J. RAVEN  
Registrar

Per: LT

CT 056667  
CT P 6288-6291



The address for service of documents on this Strata Corporation is:

C/O HOPE, HEINRICH & HANSEN  
1598 - 6TH AVENUE  
PRINCE GEORGE - B.C.

CONVEYOR INVESTMENTS LTD.

I hereby certify that the construction of the building situated on Lot 6, Plan 23739, District Lot 751, Cariboo District has been approved for Strata Plan development.  
This 29 day of DEC, 1979

C. E. O'Neil  
Approving Officer, City of Prince George

I, DONALD A. DUFFY, of the City of Prince George a British Columbia Land Surveyor, hereby certify that the buildings erected on the parcel described above are wholly within the external boundaries of that parcel.

Dated at Prince George, B.C. this 21 day of Nov, 1979

W.D. USHER & ASSOCIATES  
LAND SURVEYORS  
PRINCE GEORGE - B.C.  
ME 51 11390 A

STRATA PLAN P.G. 39

LOT NO.	SHEET N <sup>o</sup>	FORM 1	FORM 2	FORM 3
		SCHEDULE OF UNIT ENTITLEMENT	SCHEDULE OF INTEREST UPON DESTRUCTION	SCHEDULE OF VOTING RIGHTS
1	3			
2	3			
3	3			
4	3			
AGGREGATE		4	4	4

I, the undersigned do solemnly declare that:  
I, the undersigned am the duly authorized agent of the owner-developer. I make this solemn declaration conscientiously believing it to be true and knowing that it is of the same force and effect as if made under oath.

Declared before me at Prince George, in the Province of British Columbia. This 21 day of Nov, 1979.

C. E. O'Neil  
A Commissioner for taking Affidavits within British Columbia.

Accepted as to forms 1, 2 and 3  
this 14 day of FEBRUARY, 1980

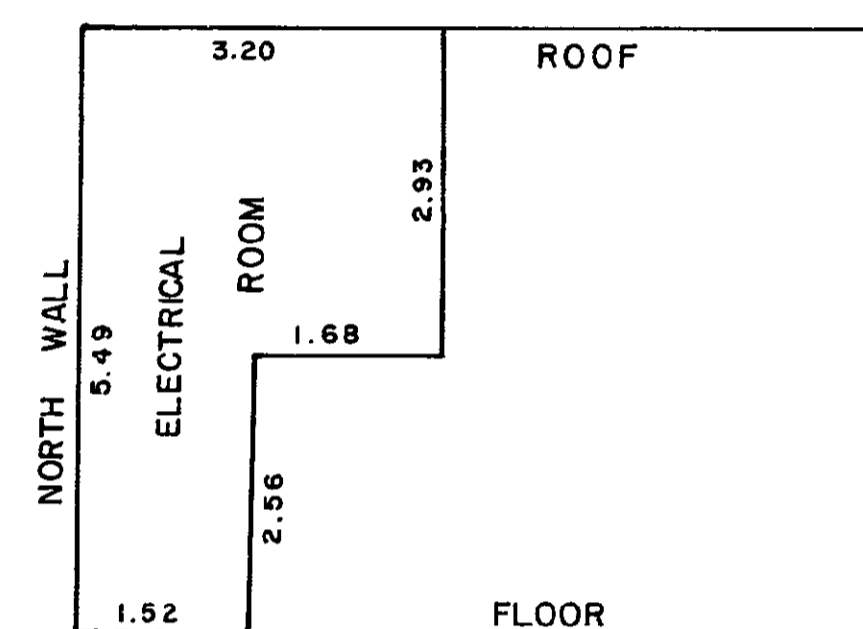
Jan M. Sickman  
Superintendent of Insurance

W.D. USHER & ASSOCIATES  
LAND SURVEYORS  
PRINCE GEORGE - B.C.  
11390 A

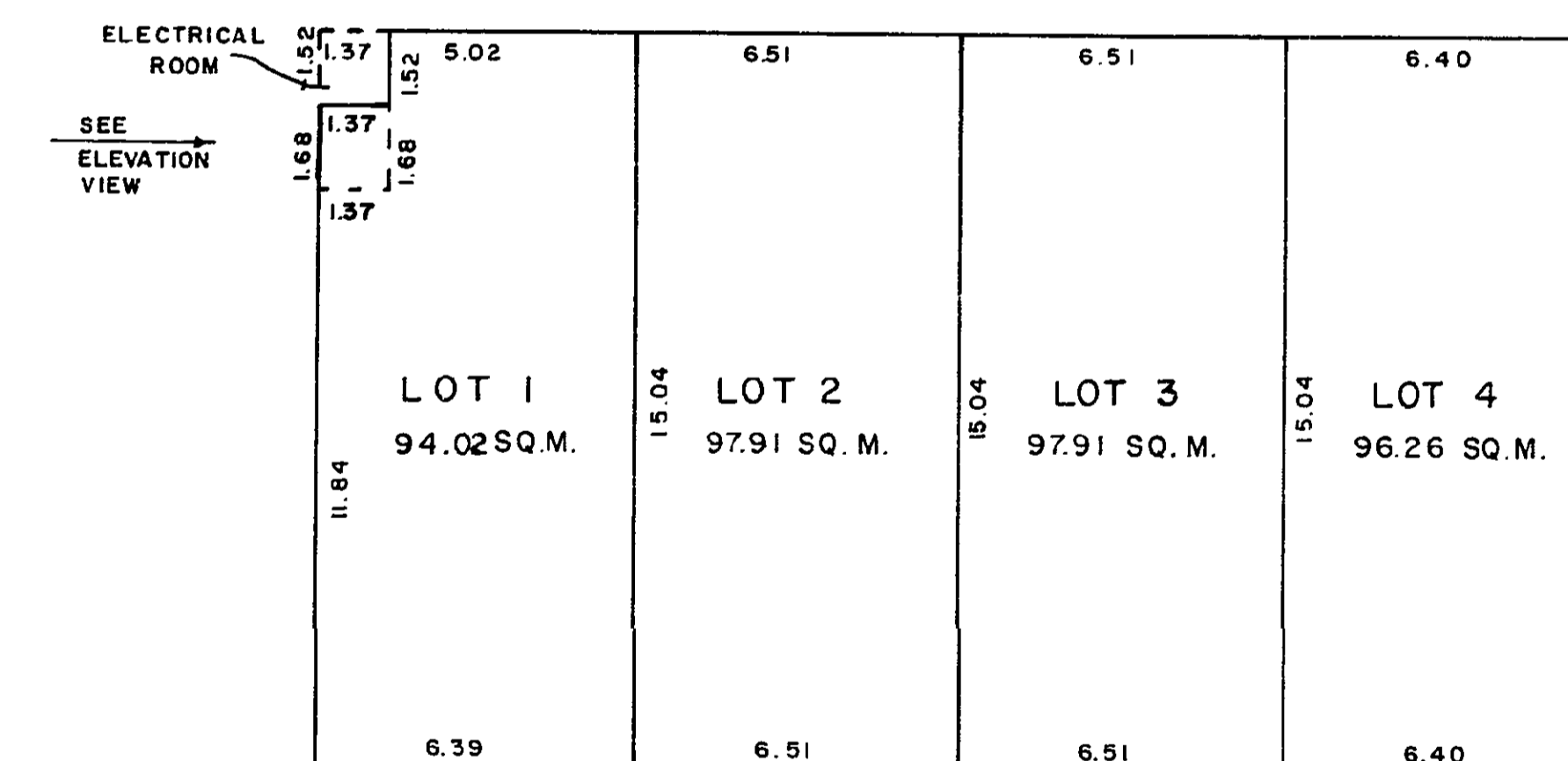
STRATA PLAN P.G. 39

LOTS 1 TO 4 INCLUSIVE

SCALE: 1 : 200



ELEVATION VIEW - LOOKING EAST  
SCALE: 1:100

  
D.A. DUFFY, B.C.L.S.  
21 day of Nov, 1979

W.D. USHER & ASSOCIATES  
LAND SURVEYORS  
PRINCE GEORGE - B.C.  
11390 A