

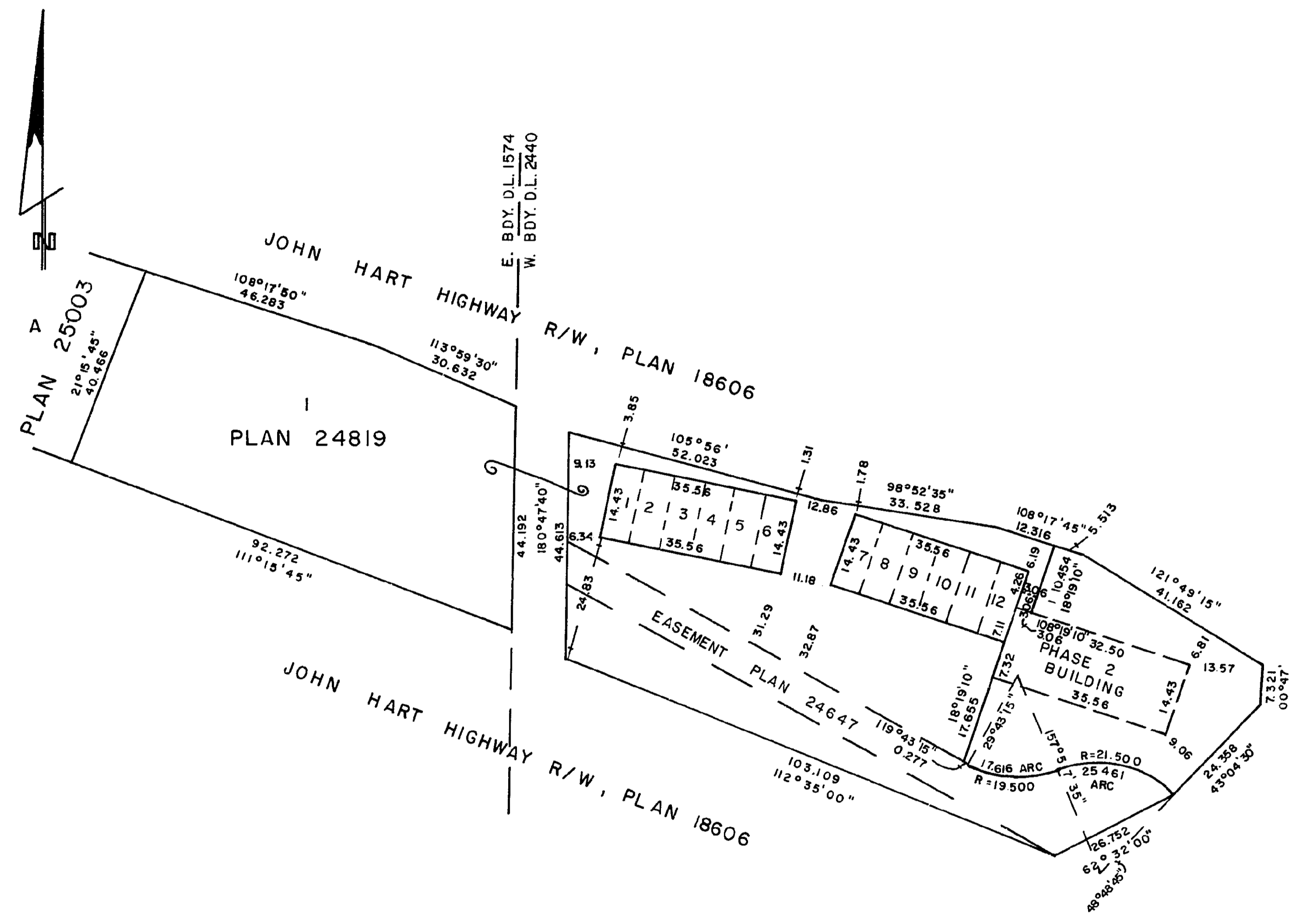
26-FF-226

STRATA PLAN (FIRST OF TWO PHASES) OF PART OF LOT 1, PLAN 24819, EXCEPT PLAN 25003 DISTRICT LOTS 1574 & 2440 CARIBOO DISTRICT—BRITISH COLUMBIA SCALE: 1 : 1000

STRATA PLAN P.G. 37 Deposited and registered in the Land Registry Office at Prince George, B.C. this 04 day of JANUARY, 1980.

E. J. RAVEN Registrar

CT 010871 CT P 761 to P 772



Civic address not available. The address for service of documents on this Strata Corporation is: C/O HOPE, HEINRICH, HANSEN 1598 - 6 TH AVENUE PRINCE GEORGE - B.C.

THE ROYAL BANK OF CANADA BY ITS LAWFUL ATTORNEYS

I hereby certify that the construction of the buildings situated on Lot 1, Plan 24819, District Lots 1574 & 2440, Cariboo District has been approved for Strata Plan development. This 19th day of SEPT., 1979

Approving Officer, City of Prince George

WITNESS: RIVERVIEW MOTEL LTD.

I, DONALD A. DUFFY, of the City of Prince George a British Columbia Land Surveyor, hereby certify that the buildings erected on the parcel described above are wholly within the external boundaries of that parcel.

Dated at Prince George, B.C. this 10 day of JULY, 1979

W. D. USHER & ASSOCIATES LAND SURVEYORS PRINCE GEORGE - B.C. L.S. 62 10826

STRATA PLAN P.G. 37

Table with columns: LOT NO., SHEET NO., FORM 1 (SCHEDULE OF UNIT ENTITLEMENT), FORM 2 (SCHEDULE OF INTEREST UPON DESTRUCTION), FORM 3 (SCHEDULE OF VOTING RIGHTS). Rows 1-12 and AGGREGATE.

I, the undersigned do solemnly declare that: I, the undersigned am the duly authorized agent of the owner-developer. I make this solemn declaration conscientiously believing it to be true and knowing that it is of the same force and effect as if made under oath.

Declared before me at Prince George in the Province of British Columbia. This 10th day of September, 1979.

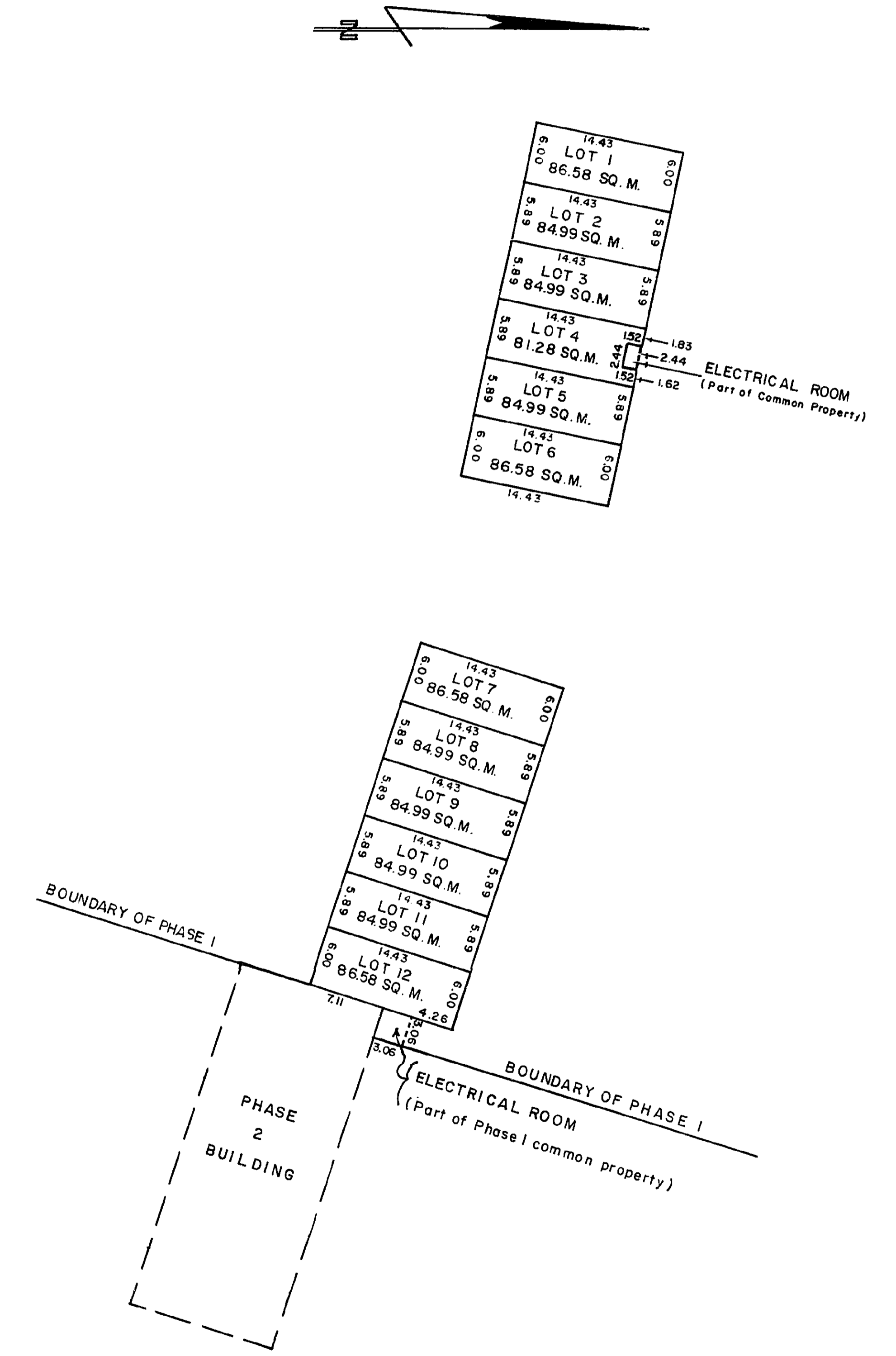
A Commissioner for taking Affidavits within British Columbia.

Accepted as to forms 1, 2 and 3. This 23rd day of NOVEMBER, 1979. Superintendent of Insurance.

W. D. USHER & ASSOCIATES LAND SURVEYORS PRINCE GEORGE - B.C. 10826

STRATA PLAN P.G. 37

LOTS 1 TO 12 INCLUSIVE SCALE: 1 : 500



D. A. DUFFY, B.C.L.S. 10 day of JULY, 1979

W. D. USHER & ASSOCIATES LAND SURVEYORS PRINCE GEORGE - B.C. 10826