

26FF-226 26FF-226

EXPLANATORY PLAN OF AMALGAMATION OF STRATA PLANS P.G. 9, P.G. 10 AND P.G. 11, DISTRICT LOT 934, CARIBOO DISTRICT.

B.C.G.S. 93G.097

Scale: 1 : 200 (Distances are in metres)

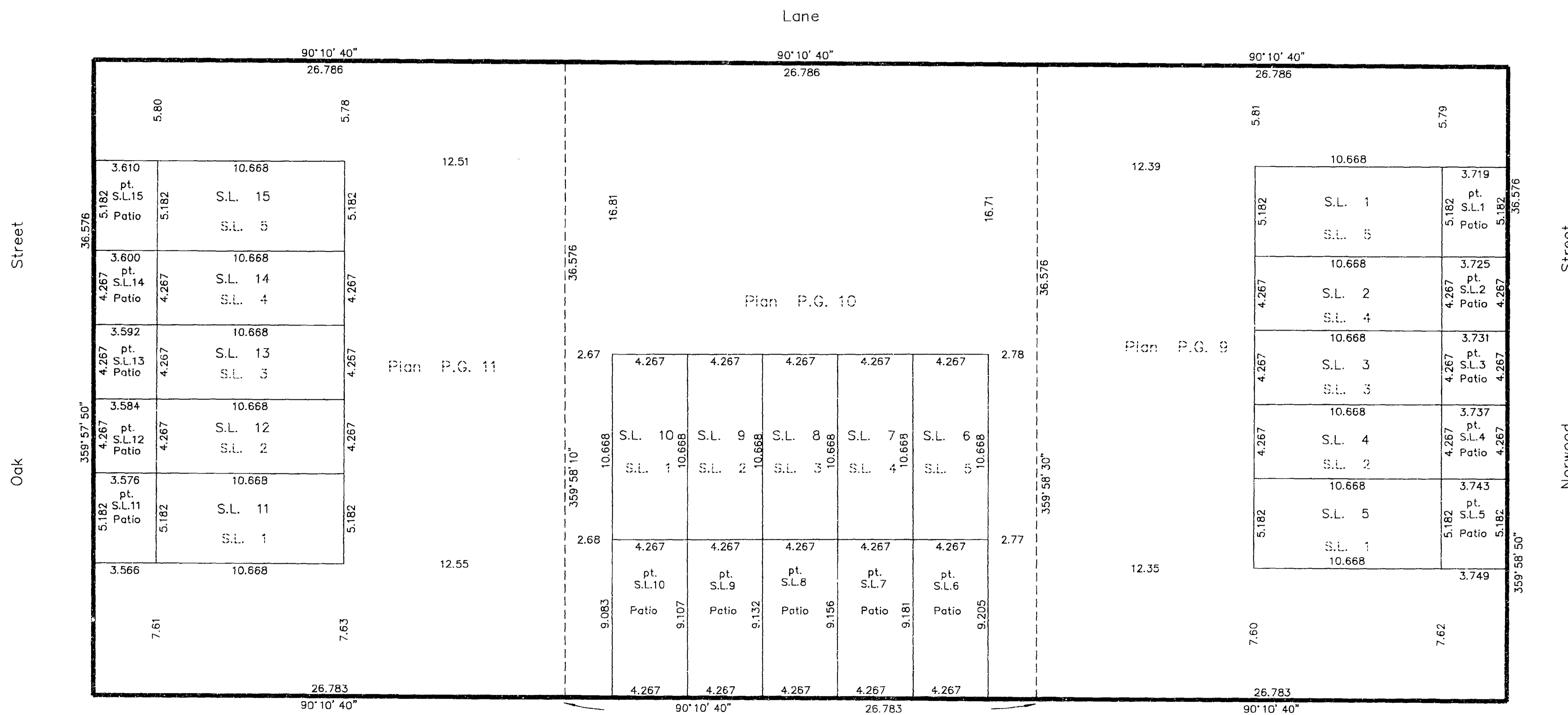


STRATA PLAN PGS 223

Deposited and registered in the Land Title Office at Prince George this 26 day of Aug 1996

Brian Bigras / dg
REGISTRAR
PK 34512

1	2	3	4	5	6	7	8
Block			22		Plan		701



The address for service of documents is:
NORTHERN CAPITAL PROPERTY MANAGEMENT INC.
 STE. 1- 1257- 4TH AVENUE
 PRINCE GEORGE B.C. V2L 3J5

Diefenbaker

Drive

Certified Correct
 According to Land Title Office records
 This 9th day of July, 1996

This plan lies within the Fraser-Fort
 George Regional District.

Dale Keown
 Dale Keown, B.C.L.S.

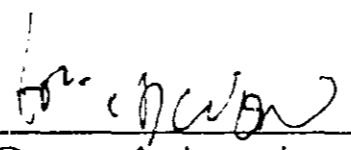
KILBRIDE LAND SURVEYING LTD.
 British Columbia Land Surveyors
 Prince George, B.C.
 Ph: (604) 562-1196 Fax: 562-3656

F.B.- D.L.- 934 FILE No. - 960448

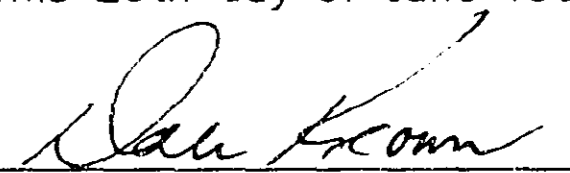
EXPLANATORY PLAN OF AMALGAMATION OF
STRATA PLANS P.G. 9, P.G. 10 AND P.G. 11,
DISTRICT LOT 934, CARIBOO DISTRICT.

STRATA LOT NO.		FORM 1 SCHEDULE OF UNIT ENTITLEMENT	FORM 2 SCHEDULE OF INTEREST UPON DESTRUCTION
New No.	Former No.	Unit Entitlement	Interest Upon Destruction
1	S.L. 5, Strata Plan PG9	1852	595
2	S.L. 4, Strata Plan PG9	1525	525
3	S.L. 3, Strata Plan PG9	1525	525
4	S.L. 2, Strata Plan PG9	1525	525
5	S.L. 1, Strata Plan PG9	1852	595
6	S.L. 5, Strata Plan PG10	1758	525
7	S.L. 4, Strata Plan PG10	1757	525
8	S.L. 3, Strata Plan PG10	1756	525
9	S.L. 2, Strata Plan PG10	1755	525
10	S.L. 1, Strata Plan PG10	1754	525
11	S.L. 1, Strata Plan PG11	1843	595
12	S.L. 2, Strata Plan PG11	1518	525
13	S.L. 3, Strata Plan PG11	1518	525
14	S.L. 4, Strata Plan PG11	1519	525
15	S.L. 5, Strata Plan PG11	1844	595
Aggregate		25301	8155

Accepted as to Forms 1 & 2
this 26th day of June 1996.


Superintendent of Real Estate

This 26th day of June 1996


Dale L. Keown B.C.L.S.