

26-FF-226

STRATA PLAN OF PARCEL 1  
PLAN PGP 37258  
DISTRICT LOT 2507  
CARIBOO DISTRICT  
B.C.G.S. 93G.096  
CITY OF PRINCE GEORGE.

FIRST SHEET  
SHEET 1 OF 9 SHEETS  
STRATA PLAN PGS 168

DEPOSITED AND REGISTERED IN THE LAND  
TITLE OFFICE AT PRINCE GEORGE, B.C.

THIS 28 DAY OF JULY 1993.

REGISTRAR W.G. GANDY per a

C/MC ADDRESS  
448 TABOR BOULEVARD  
PRINCE GEORGE, B.C.

SCALE 1 : 500 (ALL DISTANCES ARE SHOWN IN METRES)

DIMENSIONS ARE TO WALL CENTRELINES.

THIS PLAN SHOWS GROUND-LEVEL MEASURED DISTANCES.  
PRIOR TO COMPUTATION OF U.T.M. COORDINATES,  
MULTIPLY BY COMBINED FACTOR 0.9995105393.

GRID BEARINGS ARE DERIVED FROM OBSERVATIONS  
BETWEEN CONTROL MONUMENTS 85H1220 AND 85H1312,  
INTEGRATED SURVEY AREA NUMBER 39.

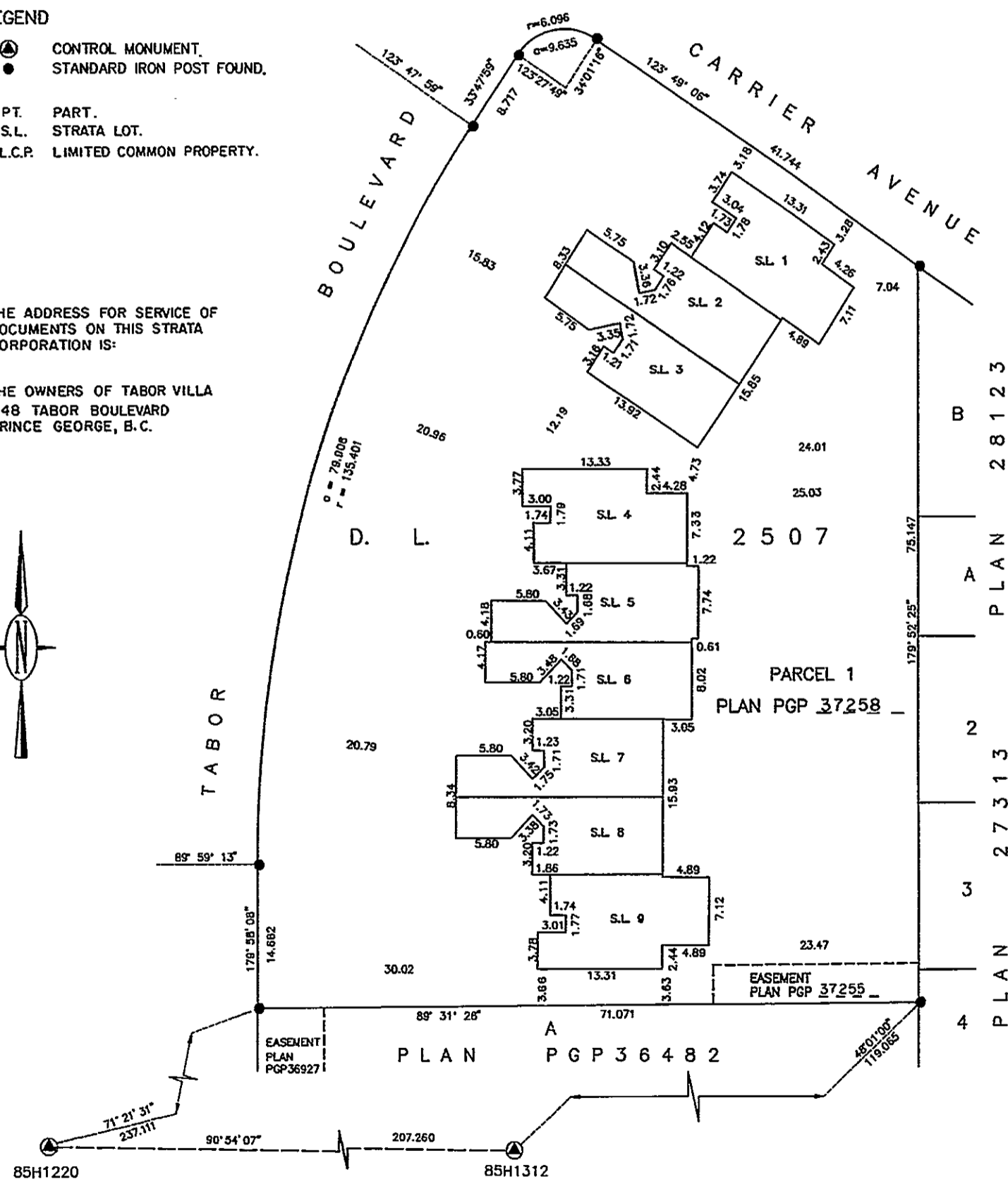
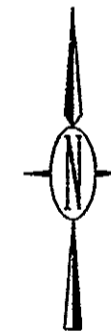
LEGEND

- CONTROL MONUMENT.
- STANDARD IRON POST FOUND.

- PT. PART.
- S.L. STRATA LOT.
- L.C.P. LIMITED COMMON PROPERTY.

THE ADDRESS FOR SERVICE OF  
DOCUMENTS ON THIS STRATA  
CORPORATION IS:

THE OWNERS OF TABOR VILLA  
448 TABOR BOULEVARD  
PRINCE GEORGE, B.C.



I, RONALD L. JOHNS, OF THE CITY OF PRINCE GEORGE,  
A BRITISH COLUMBIA LAND SURVEYOR, HEREBY CERTIFY  
THAT THE BUILDINGS ERECTED ON THE PARCEL DESCRIBED  
ABOVE ARE WHOLLY WITHIN THE EXTERNAL BOUNDARIES  
OF THAT PARCEL.

DATED AT PRINCE GEORGE THIS 9th DAY OF JUNE, 1993

R.L. Johns  
R.L. JOHNS, B.C.L.S.

THIS PLAN LIES WITHIN THE FRASER-  
FORT GEORGE REGIONAL DISTRICT.

R.L. JOHNS & ASSOCIATES  
LEGAL AND ENGINEERING SURVEYS  
240 VICTORIA STREET  
PRINCE GEORGE, B.C. V2L 2J4  
PHONE: (604) 562-5759  
FAX: (604) 562-5703

92-393-A  
H1-25  
NS-12-16

STRATA PLAN OF PARCEL 1  
PLAN PGP 37258  
DISTRICT LOT 2507  
CARIBOO DISTRICT

SECOND SHEET  
SHEET 2 OF 9 SHEETS  
STRATA PLAN PGS 168

CONDOMINIUM ACT

STRATA LOT NO.	SHEET NO.	FORM 1 SCHEDULE OF UNIT ENTITLEMENT Unit Entitlement	FORM 2 SCHEDULE OF INTEREST UPON DESTRUCTION Interest Upon Destruction
1	3 & 4	2412	166960
2	3 & 4	2148	150765
3	3 & 4	2152	154004
4	5 & 6	2458	168631
5	5 & 6	2162	156616
6	5 & 6	2154	156616
7	5 & 6	2149	156616
8	5 & 6	2162	156616
9	5 & 6	2471	173333
Aggregate		20268	1440157

ACCEPTED AS TO FORMS 1 & 2

THIS 29 DAY OF June 1993.

SUPERINTENDENT OF REAL ESTATE

STATUTORY DECLARATION

I, THE UNDERSIGNED, DO SOLEMNLY DECLARE THAT  
(1) I, THE UNDERSIGNED AM THE OWNER DEVELOPER.  
(2) THE STRATA PLAN IS ENTIRELY FOR RESIDENTIAL USE.

I MAKE THE SOLEMN DECLARATION CONSCIENTIOUSLY BELIEVING  
IT TO BE TRUE AND KNOWING THAT IT IS THE SAME FORCE AND  
EFFECT AS IF MADE UNDER OATH.

AFFIRMED STATUTORY

DECLARED BEFORE ME AT Prince George IN THE  
PROVINCE OF BRITISH COLUMBIA  
THIS 29 DAY OF June 1993.

A COMMISSIONER FOR TAKING AFFIDAVITS  
WITHIN THE PROVINCE OF BRITISH COLUMBIA.

NEW DEVELOPMENT CERTIFICATE

I, RONALD L. JOHNS, OF THE CITY OF PRINCE GEORGE,  
BRITISH COLUMBIA LAND SURVEYOR, HEREBY CERTIFY  
THAT THE STRATA LOTS REPRESENTED ON THE STRATA  
PLAN OF PARCEL 1, PLAN PGP 37258 DISTRICT  
LOT 2507, CARIBOO DISTRICT, CONSTITUTE A NEW  
DEVELOPMENT AND HAVE NOT, TO THE BEST OF MY  
KNOWLEDGE AND BELIEF, BEEN PREVIOUSLY OCCUPIED.

DATED AT PRINCE GEORGE, BRITISH COLUMBIA

THIS 9th DAY OF JUNE, 1993.

R.L. Johns  
R.L. JOHNS, B.C.L.S.

OWNER - DEVELOPER  
CONSORTIUM FIVE TIMBER LTD.

AUTHORIZED SIGNATORY

JOE CHUNG NG  
PRINT NAME  
JOE CHUNG NG

WITNESS

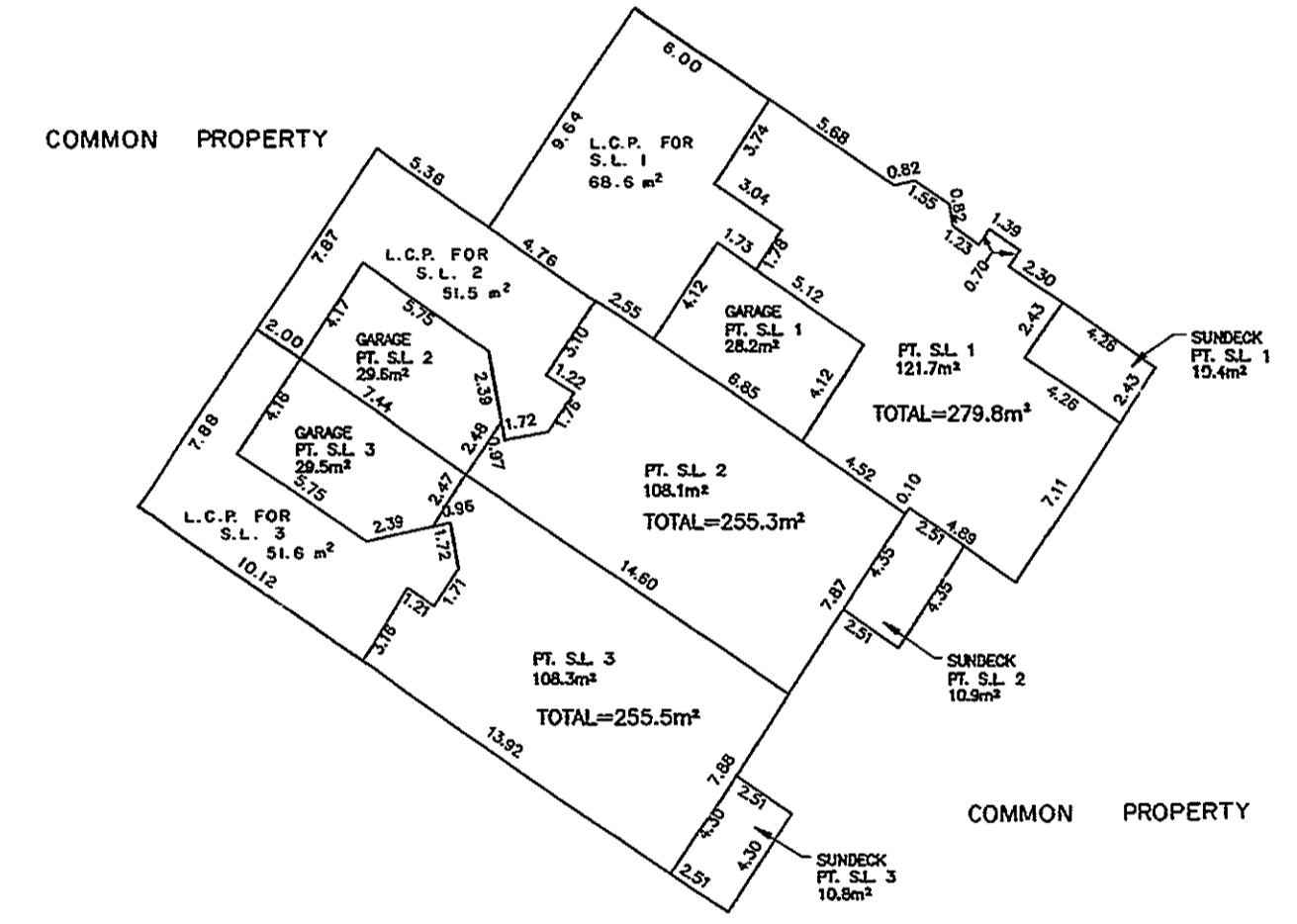
JOHN KEITH DUNSMUIR  
PRINT NAME  
101 - BROAD AVENUE  
PRINCE GEORGE, B.C.

OCCUPATION  
LAWYER

STRATA PLAN OF PARCEL 1  
PLAN PGP 37258  
DISTRICT LOT 2507  
CARIBOO DISTRICT

SHEET 3 OF 9 SHEETS  
STRATA PLAN PGS 168

SCALE 1 : 250



FIRST FLOOR PLAN  
STRATA LOTS 1 - 3

THIS 9th DAY OF JUNE, 1993.

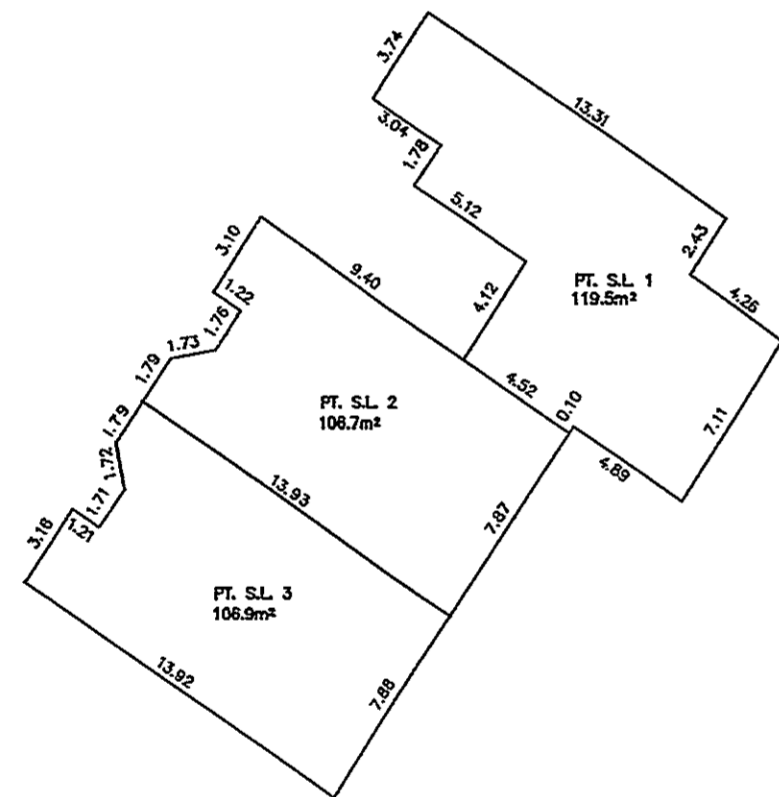
R.L. Johns  
R.L. JOHNS, B.C.L.S.

STRATA PLAN OF PARCEL 1  
PLAN PGP 37258 --  
DISTRICT LOT 2507  
CARIBOO DISTRICT

SHEET 4 OF 9 SHEETS  
STRATA PLAN PGS. 168 --



SCALE 1 : 250



BASEMENT PLAN  
STRATA LOTS 1 - 3

THIS 9th DAY OF JUNE, 1993.

*R.L. Johns*  
R.L. JOHNS, B.C.L.S.

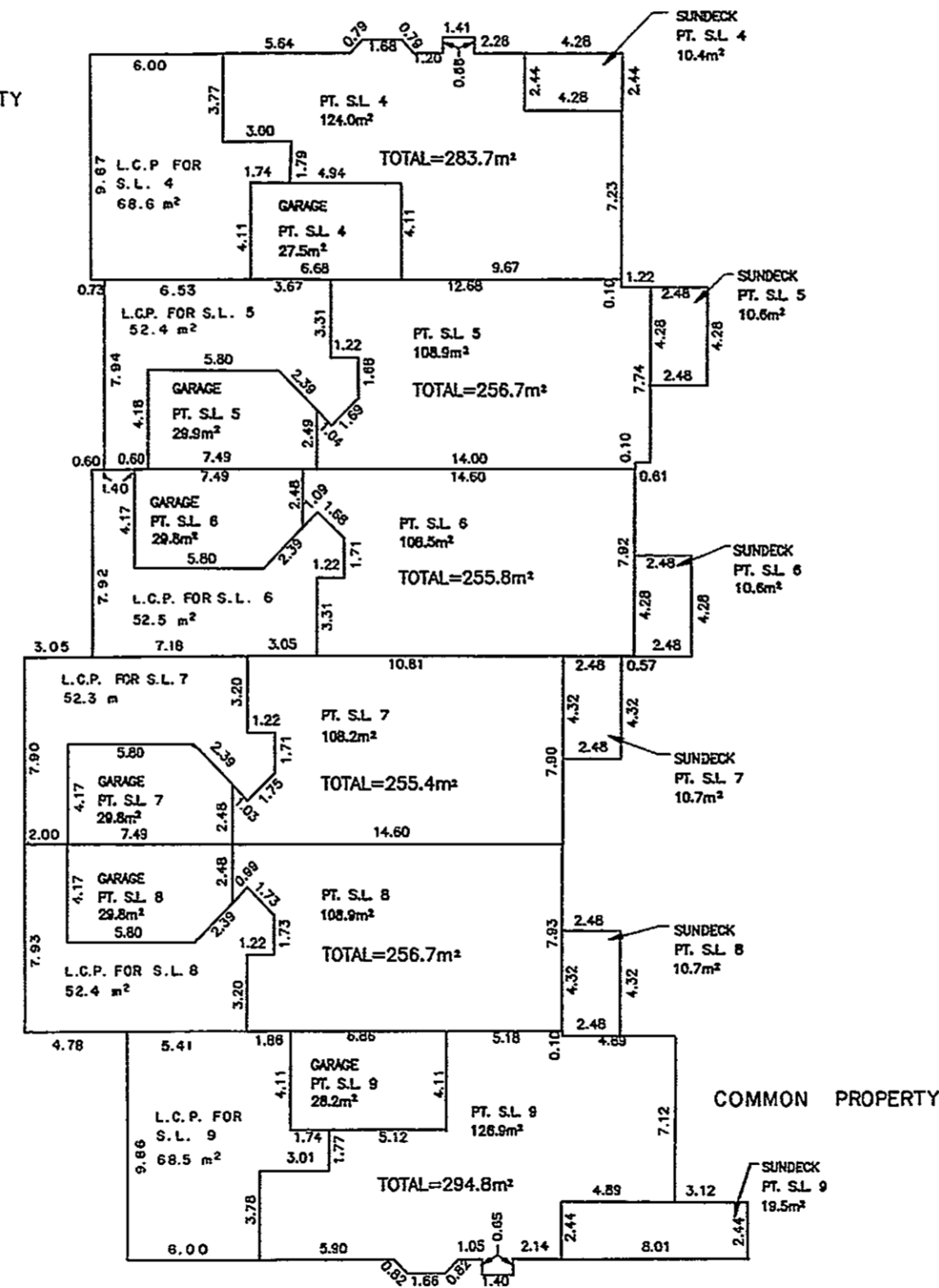
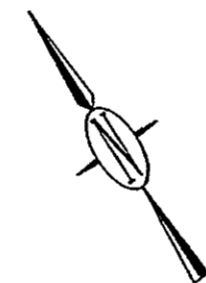
STRATA PLAN OF PARCEL 1  
PLAN PGP 37258 --  
DISTRICT LOT 2507  
CARIBOO DISTRICT

SHEET 5 OF 9 SHEETS  
STRATA PLAN PGS. 168 --



SCALE 1 : 250

COMMON PROPERTY



FIRST FLOOR PLAN  
STRATA LOTS 4 - 9

THIS 9th DAY OF JUNE, 1993

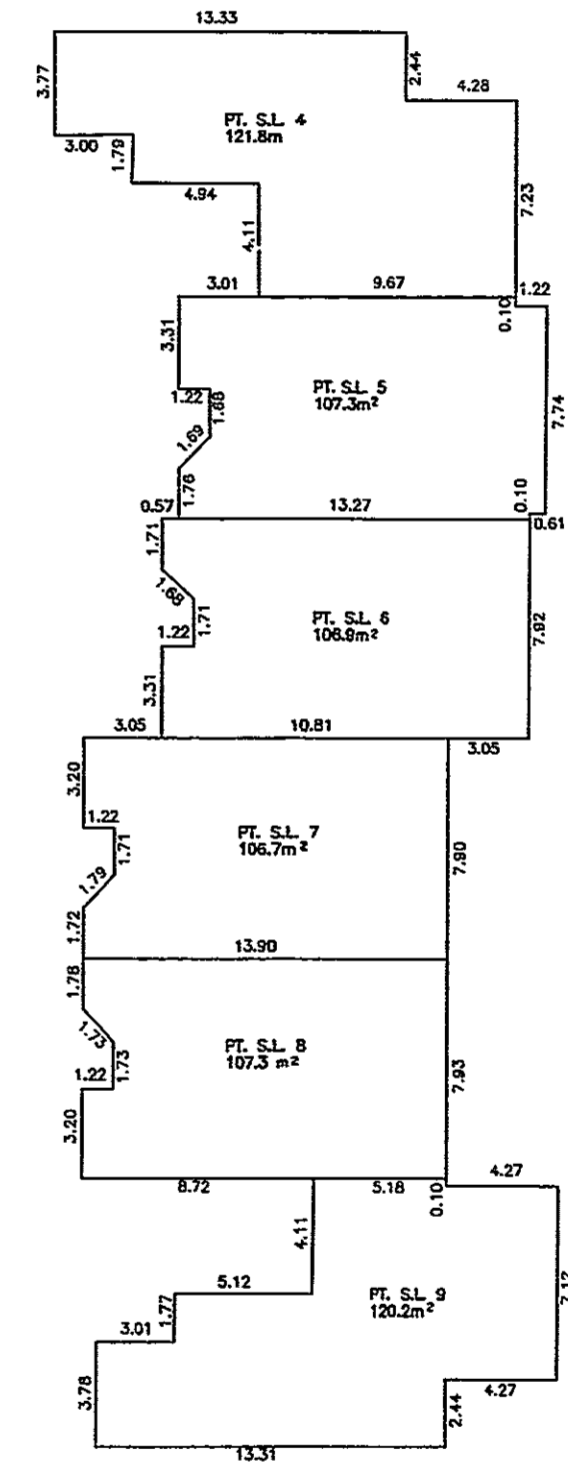
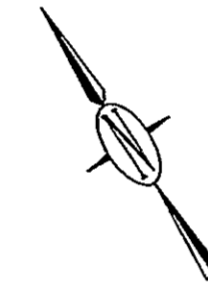
*R.L. Johns*  
R.L. JOHNS, B.C.L.S.

STRATA PLAN OF PARCEL 1  
PLAN PGP 37258 --  
DISTRICT LOT 2507  
CARIBOO DISTRICT

SHEET 6 OF 9 SHEETS  
STRATA PLAN PGS. 168 --



SCALE 1 : 250



BASEMENT PLAN  
STRATA LOTS 4 - 9

THIS 9th DAY OF JUNE, 1993

*R.L. Johns*  
R.L. JOHNS, B.C.L.S.

