

26-F-226

STRATA PLAN PG153

Deposited and registered in the Land Title Office at Prince George this 22 day of Sept 1989.

W.G. Gandy  
Registrar

STRATA PLAN OF  
LOT 10, BLOCK 197, PLAN 1268,  
D.L. 343, CARIBOO DISTRICT.  
B.C.G.S. 936.097

SCALE: 1:100 (Distances are in metres)



Street Address: 1409 - 9th Avenue,  
Prince George, B.C.

Address of Strata Corporation at which documents  
are to be served: 1409 - 9th Avenue,  
Prince George, B.C.

Legend:  
sq. m. .... square metre  
pt. .... part.

I, D. Keown, of the City of Prince George, British Columbia  
Land Surveyor, hereby certify:  
1. That the building erected on the Parcel described above  
is wholly within the external boundaries of that parcel  
subject to clause 2 of this certificate.  
2. Certain parts of the building project beyond such external  
boundaries but they are within the limits of the lands  
under an indemnity agreement filed with the City of  
Prince George.  
Dated this 12<sup>th</sup> day of September 1989.

D. Keown, B.C.L.S.

I, D. Keown, of Prince George, British Columbia, land  
surveyor, hereby certify that the strata lots represented  
on the strata plan of Lot 10, Block 197, Plan 1268,  
D.L. 343, Cariboo District, constitute a new development  
and have not, to the best of my knowledge and belief,  
been previously occupied.

Dated at Prince George, B.C., this 21<sup>st</sup> day of  
July 1989.

Owner: Landbank Properties Ltd.

Authorized Signatories

McWilliam, Whyte, Goble & Associates,  
B.C. Land Surveyors,  
Prince George (604) 562-1196  
Kamloops - Smithers - Williams Lake

REF. NO. 88261

For correction of Plan  
Re: FORM 1 and 2 see  
PD 34814

STRATA TITLES ACT

Lot No.	Sheet No	FORM 1	FORM 2	FORM 3
		Schedule of Unit Entitlement	Schedule of Interest Upon Destruction	Schedule of Voting Rights
1		35 65	22 60	1
2		65 35	176 40	1
Aggregate		100	2100 100	2

Approved as to forms 1, 2 and 3  
this 2<sup>nd</sup> day of July 1989.

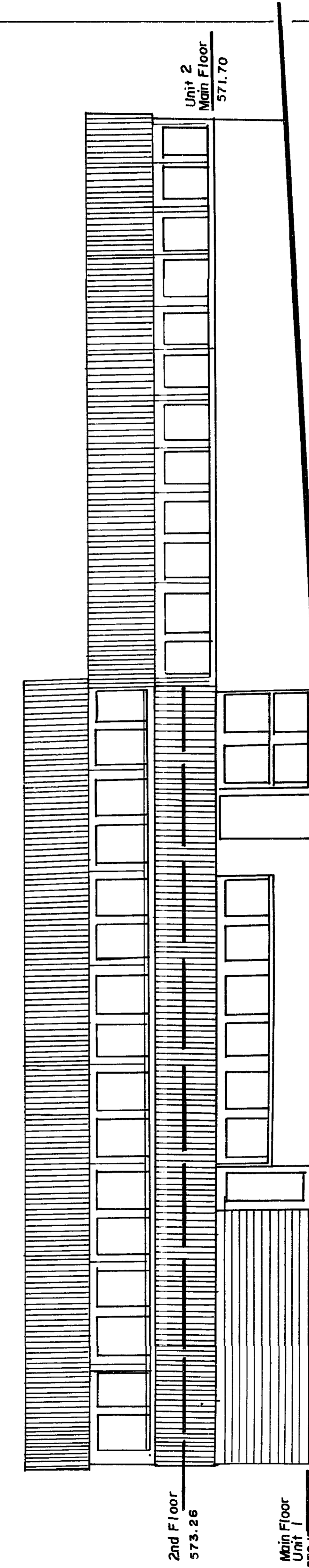
Superintendent of Real Estate.

This 21<sup>st</sup> day of July 1989

D. Keown  
B.C.L.S.

REF. NO. 88261

ELEVATION VIEW SHOWING FLOORS  
(facing west)  
NOT TO SCALE

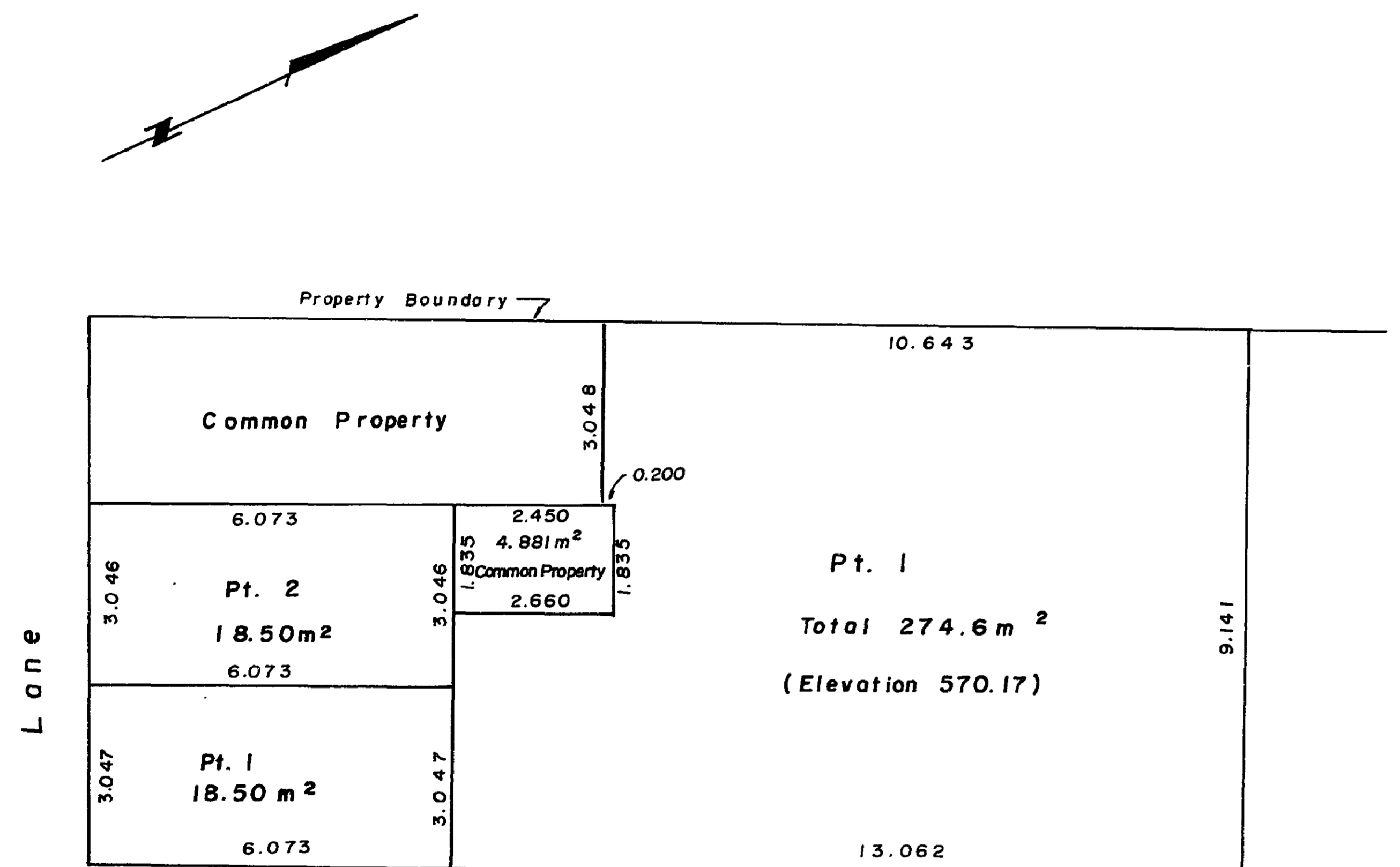


This 21<sup>st</sup> day of July 1989

D. Keown, B.C.L.S.

REF. NO. 88261

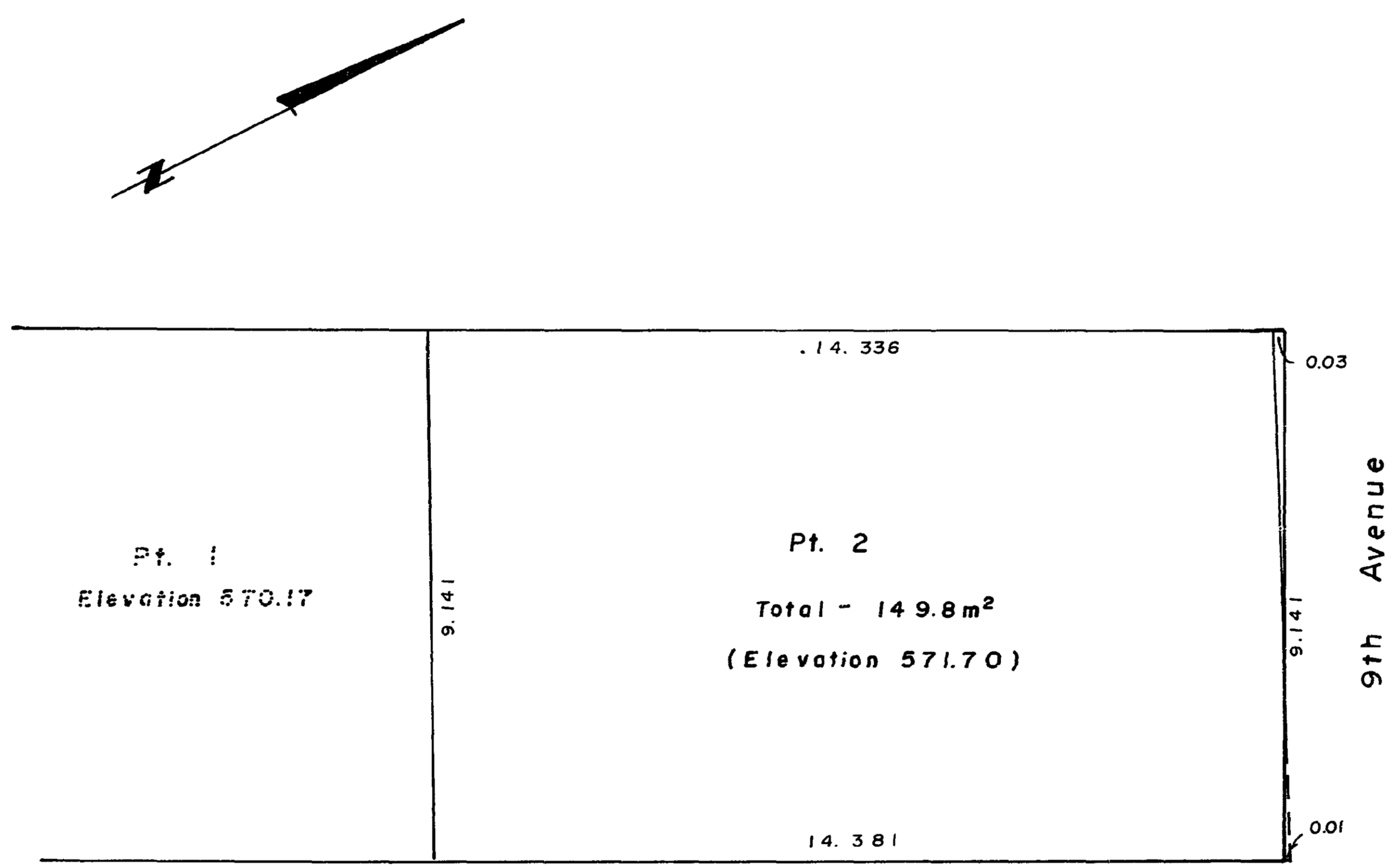
MAIN FLOOR (pt. 1)  
SCALE : 1:100



Brunswick Street

This 21<sup>st</sup> day of July 1989.  
D. Keown  
D. Keown, B.C.L.S.

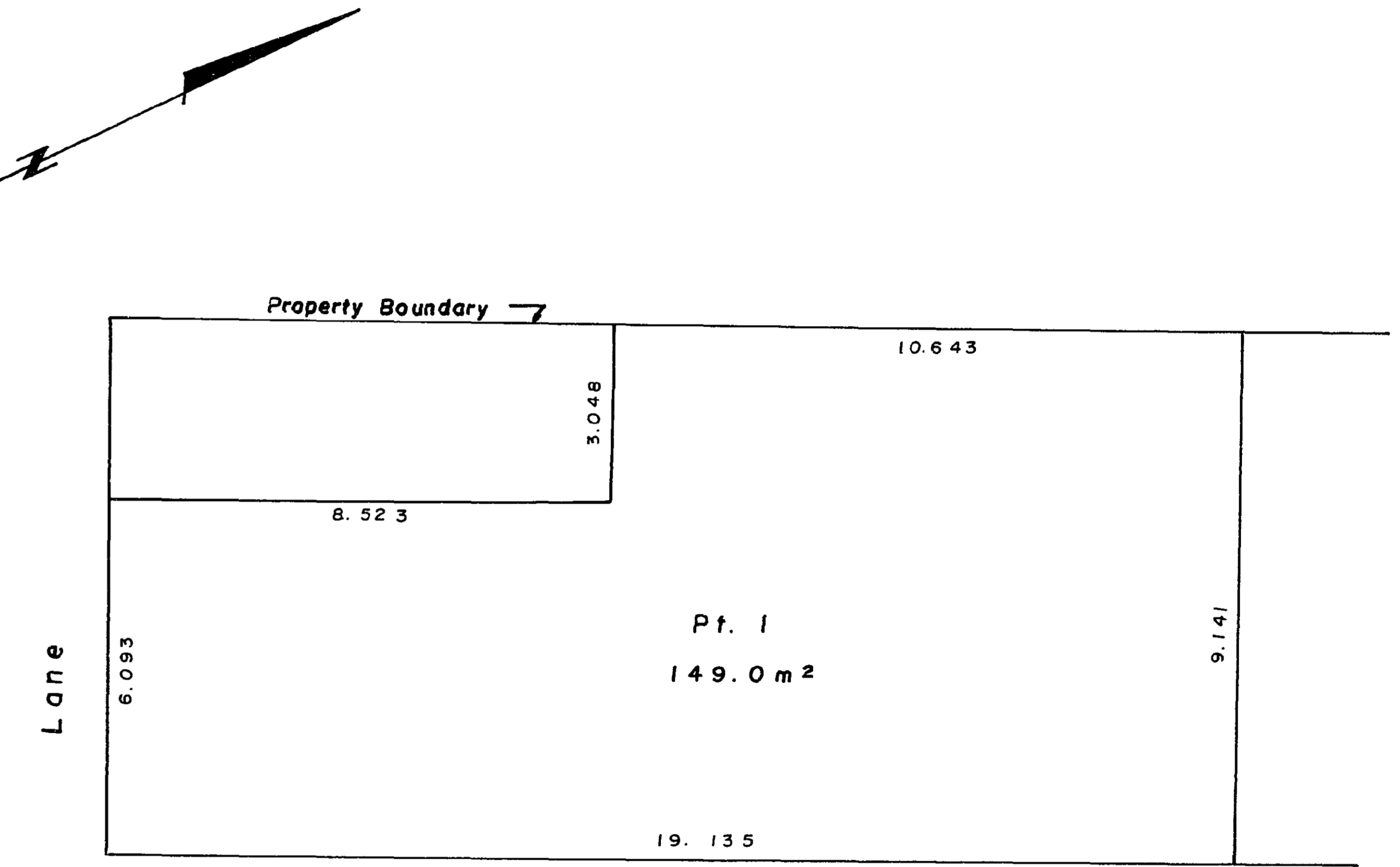
MAIN FLOOR (pt. 2)  
SCALE : 1:100



Brunswick Street

This 21<sup>st</sup> day of July 1989.  
D. Keown  
D. Keown, B.C.L.S.

SECOND FLOOR (pt. 1)  
SCALE : 1:100



Brunswick Street

This 21<sup>st</sup> day of July 1989.  
D. Keown  
D. Keown, B.C.L.S.

