

REFERENCE PLAN OF CONSOLIDATION OF
 ASSIGNED LOT A (60005M), BLOCK 56,
 LOTS 13 TO 18, BLOCK 56, PLAN 752,
 AND LOT 1, PLAN 30294, ALL OF
 DISTRICT LOT 937, CARIBOO DISTRICT.

PLAN NO. PGP 48070

Deposited in the Land Title Office at Prince
 George this 03 day of June, 2002

Pursuant to Section 100(1)(b) of
 the Land Title Act.

B.C.G.S. 93G.097

REGISTRAR

LEGEND

- Standard Iron Post Found
- ⊙ Control Monument Found

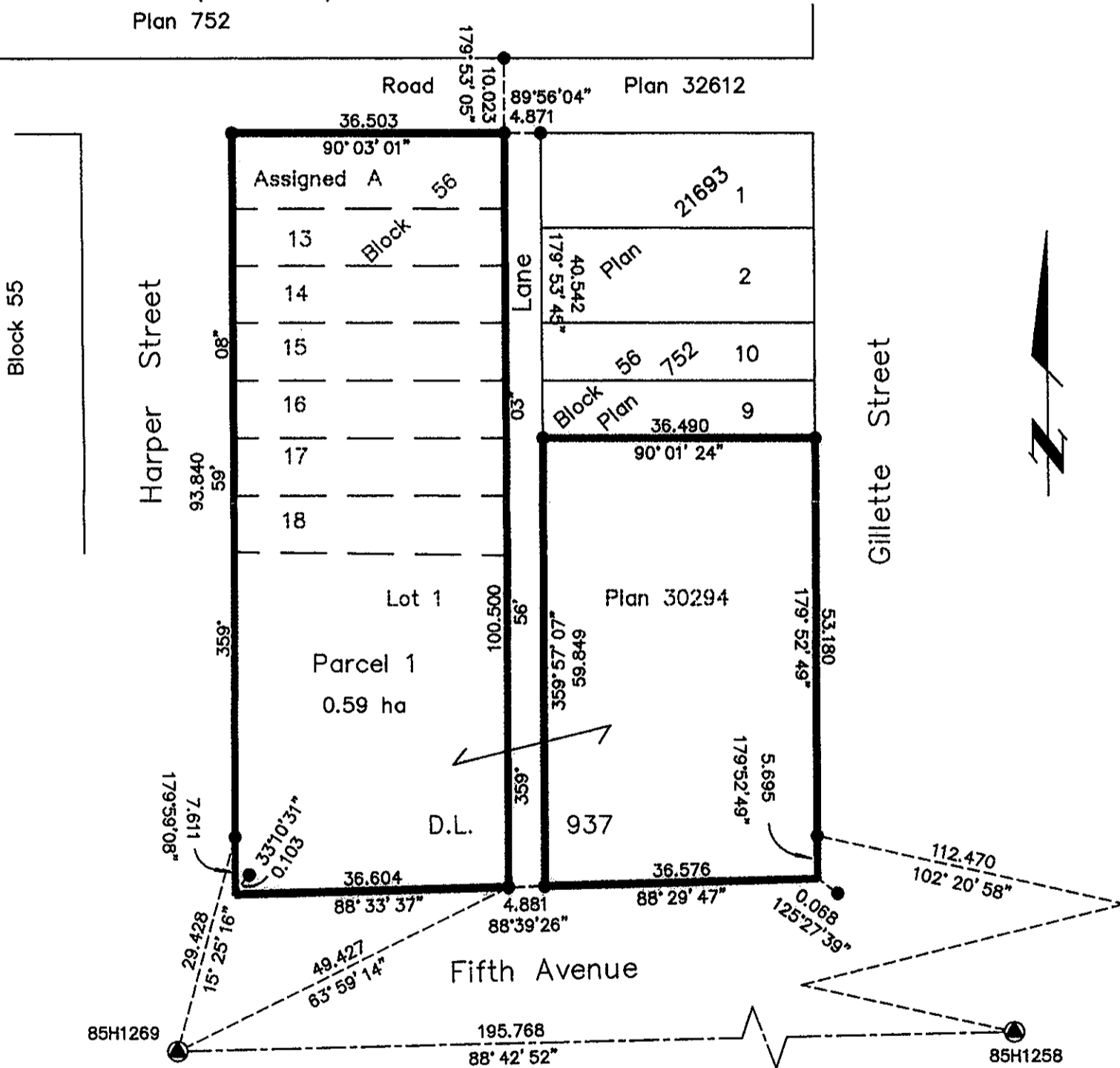
Scale: 1 : 750 (Distances are in metres)



Note: This plan shows ground level measured
 distances. Prior to computation of U.T.M.
 co-ordinates multiply by the combined
 factor 0.9995111

Grid bearings are derived from observations between
 control monuments 85H1269 and 85H1258, integrated
 survey area number 39, City of Prince George, B.C.
 NAD83(CSRS)

Parcel X (Plan 25199) of Blocks 65 and 66
 Plan 752



Owner: FIRST BAPTIST CHURCH, PRINCE GEORGE
 Inc. No. S33462

Norman Ricard
 Authorized Signatory

NORMAN RICARD
 Print Name

Mel I. Rutherford
 Authorized Signatory

MEL I. RUTHERFORD
 Print Name

Cheri Burton
 Witness to both

Cheri Burton
 Print Name

185 Quebec St.
 Address

Prince George BC V2L 1W1
 Postal Code

Computer Drafter
 Occupation

I, Gordon Kilbride, a British Columbia Land Surveyor, of
 Prince George, in British Columbia, certify that I was
 present at and personally superintended the survey
 represented by this plan, and that the survey and plan
 are correct. The survey was completed on the 18th day
 of June, 2001.

Gordon Kilbride
 Gordon Kilbride, B.C.L.S.

This plan lies within the Fraser-Fort
 George Regional District.

KILBRIDE LAND SURVEYING LTD.

British Columbia Land Surveyors

Prince George, B.C.

Ph: (250) 562-1196 Fax: 562-3656

F.B. WM41

D.L. 937

File No. 010094