

EXPLANATORY PLAN TO  
 ACCOMPANY CITY OF PRINCE  
 GEORGE BY LAW No. ,  
 CLOSING LANE IN BLOCK 17,  
 PLAN 701, DISTRICT LOT 934,  
 CARIBOO DISTRICT.

PLAN NO. PGP 48056

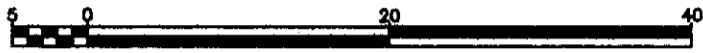
Deposited in the Land Title Office at Prince  
 George this 29 day of may, 2002.

Pursuant to Section 120 of  
 the Land Title Act.

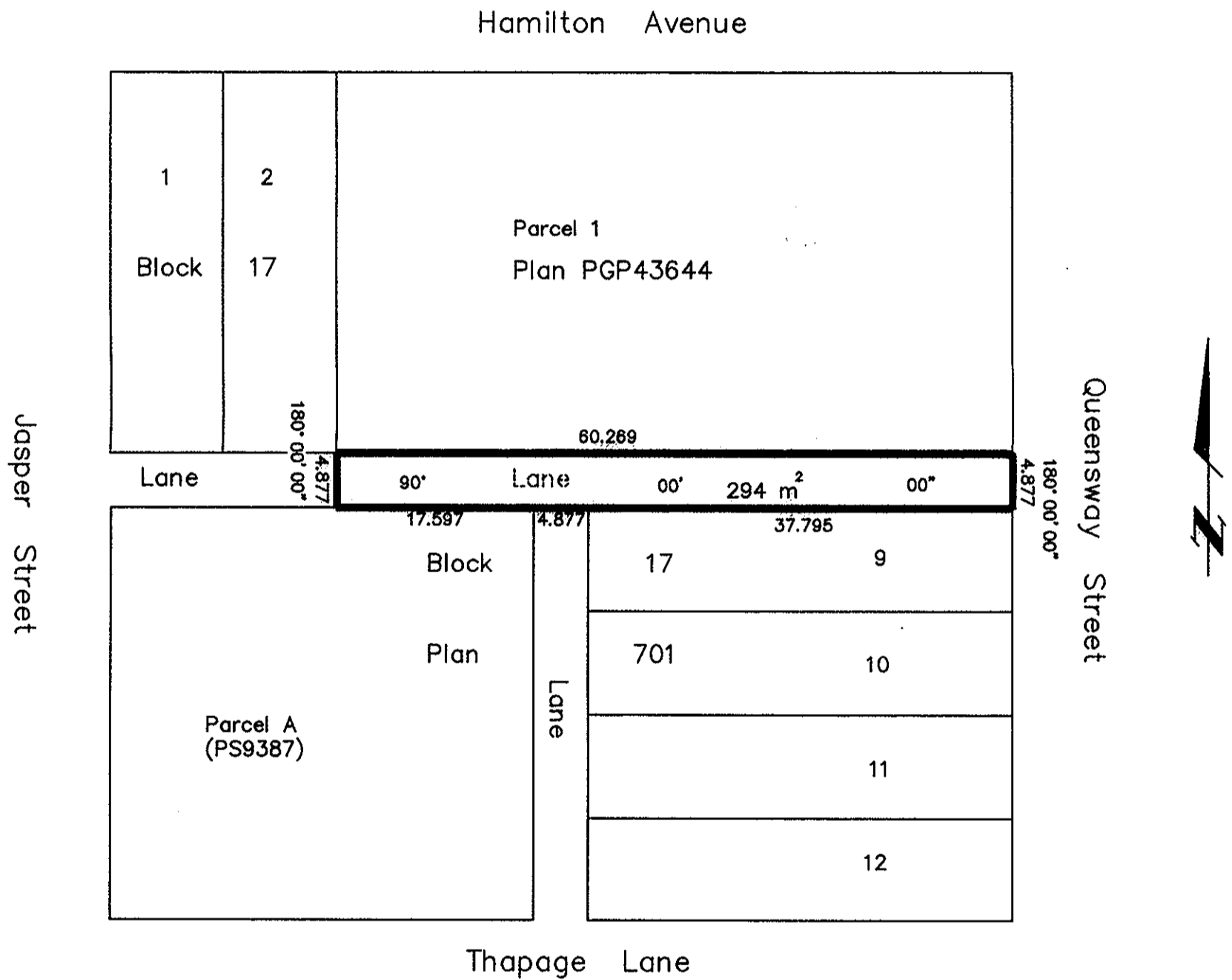
Lk.  
 -----  
 REGISTRAR

B.C.G.S. 93G.097

Scale: 1 : 500 (Distances are in metres)



Bearing from Plan PGP43644 is rotated  
 0°06'41" clockwise to match Plan 701



Certified Correct, according to  
 Land Title Office Records.  
 This 14th day of December, 2001.

This plan lies within the Fraser-Fort  
 George Regional District.

Gordon Kilbride  
 -----  
 Gordon Kilbride, B.C.L.S.

<b>KILBRIDE LAND SURVEYING LTD.</b> British Columbia Land Surveyors Prince George, B.C. Ph: (250) 562-1196 Fax: 562-3656		
F.B.	D.L. 934	File No. 010246L