

REFERENCE PLAN TO ACCOMPANY
 CITY OF PRINCE GEORGE BYLAW NO. 7343
 CLOSING PART OF LANE ADJACENT TO LOT 4
 AND ESTABLISHING AS ROAD PARTS OF
 LOTS 3 AND 4, BLOCK 9, PLAN 701
 DISTRICT LOT 934
 CARIBOO DISTRICT

PLAN No. PGP 47861

DEPOSITED IN THE LAND TITLE OFFICE
 AT PRINCE GEORGE, B.C., THIS 21 --
 DAY OF MARCH --, 20 02

B.C.G.S. 93G.087

REGISTRAR

PURSUANT TO SECTION 525(s) OF THE LOCAL GOVERNMENT ACT



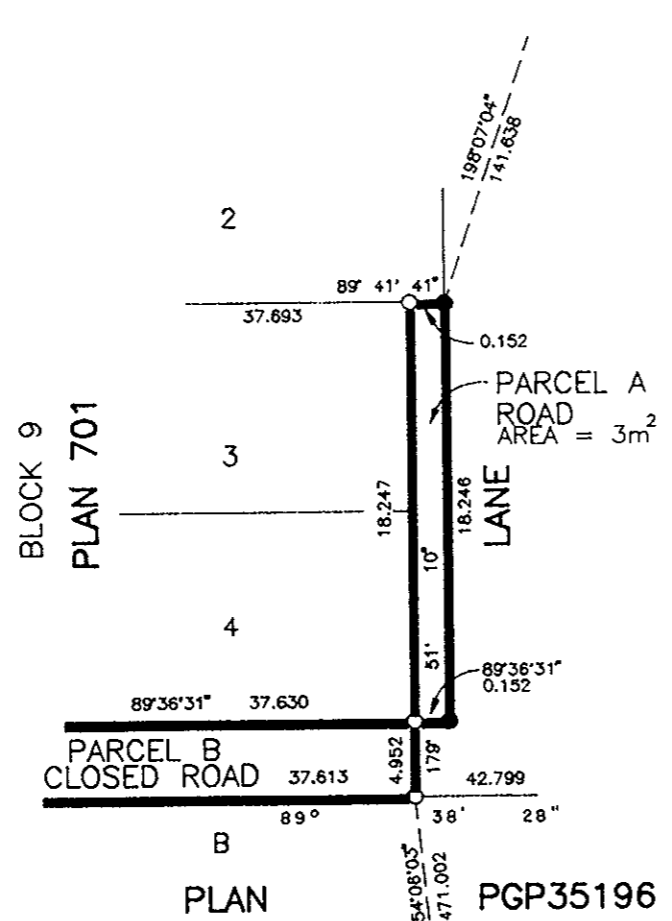
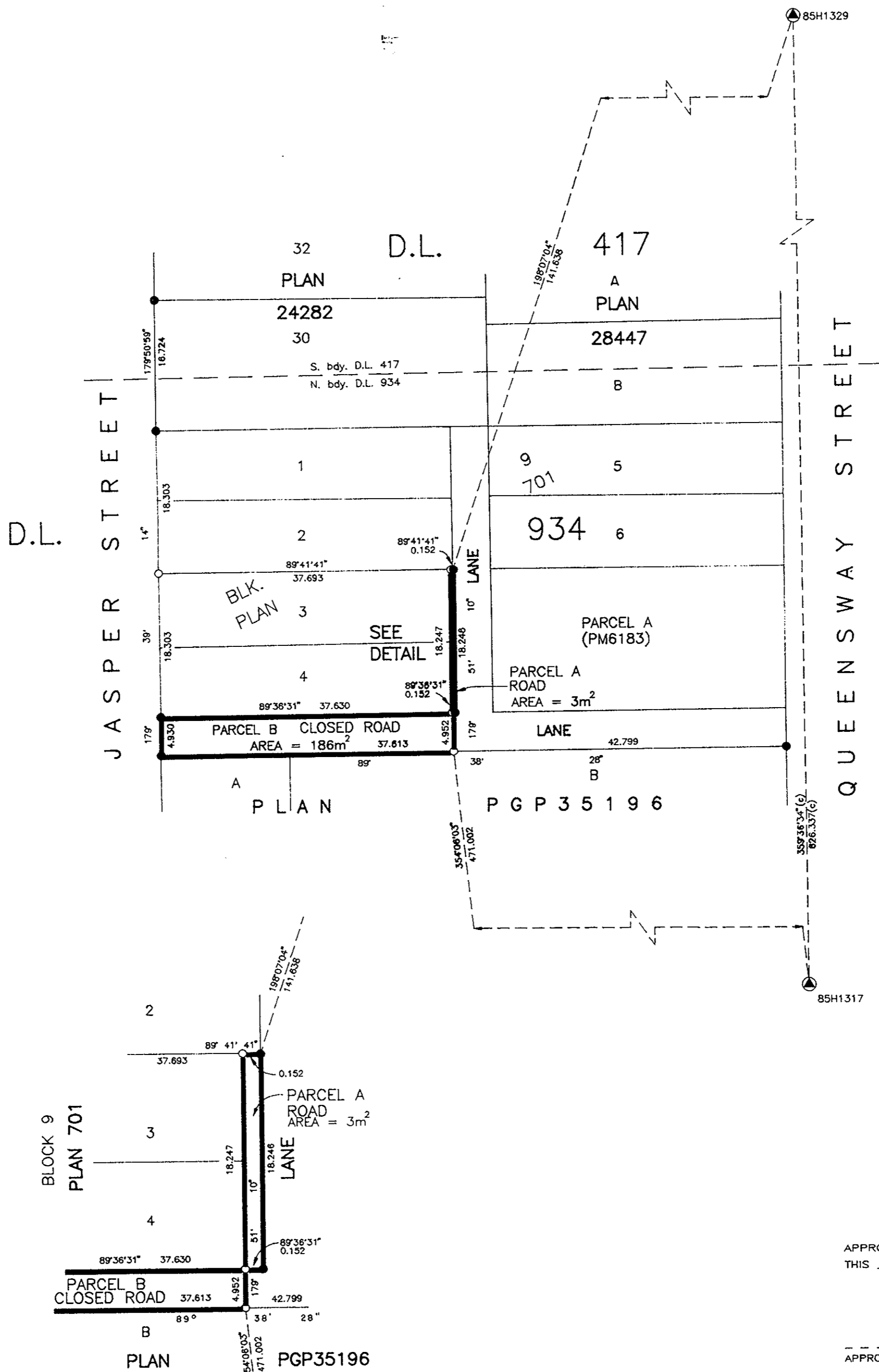
SCALE= 1 : 500
 ALL DISTANCES ARE SHOWN IN METRES.

THIS PLAN SHOWS GROUND-LEVEL MEASURED DISTANCES.
 PRIOR TO COMPUTATION OF U.T.M. COORDINATES, MULTIPLY
 BY COMBINED FACTOR 0.9995159.

GRID BEARINGS ARE DERIVED FROM OBSERVATIONS
 BETWEEN CONTROL MONUMENTS 85H1317, AND 85H1329,
 INTEGRATED SURVEY AREA NUMBER 39, PRINCE GEORGE.

LEGEND

- STANDARD IRON POST FOUND
- STANDARD IRON POST PLACED
- ▲ CONTROL MONUMENT



APPROVED UNDER THE LAND TITLE ACT
 THIS -- DAY OF --, 20 --

APPROVING OFFICER, CITY OF PRINCE GEORGE.

THIS PLAN LIES WITHIN THE FRASER-
 FORT GEORGE REGIONAL DISTRICT.

I, RONALD L. JOHNS, A BRITISH COLUMBIA LAND
 SURVEYOR, OF PRINCE GEORGE, IN BRITISH COLUMBIA,
 CERTIFY THAT I WAS PRESENT AT AND PERSONALLY
 SUPERINTENDED THE SURVEY REPRESENTED BY THIS
 PLAN AND THAT THE SURVEY AND PLAN ARE CORRECT.
 THE SURVEY WAS COMPLETED ON THE 27TH DAY OF
 JULY, 2001.

R. L. Johns
 R.L. JOHNS, B.C.L.S., C.L.S.

R. L. JOHNS LAND SURVEYING LTD.
 LEGAL AND ENGINEERING SURVEYS
 240 VICTORIA STREET
 PRINCE GEORGE, B. C. V2L 2J4
 PHONE: (250)562-5759
 FAX: (250)562-5703
 2001058 X6-29