

PLAN NO. PGP 47833

Deposited in the Land Title Office at Prince George this 14 day of MARCH, 2002

REGISTRAR

REFERENCE PLAN OF ROAD OVER BLOCK E OF DISTRICT LOT 2155, CARIBOO DISTRICT.

Pursuant to Section 107 of the Land Title Act.

B.C.G.S. 93G.097

Scale: 1 : 2000 (Distances are in metres)

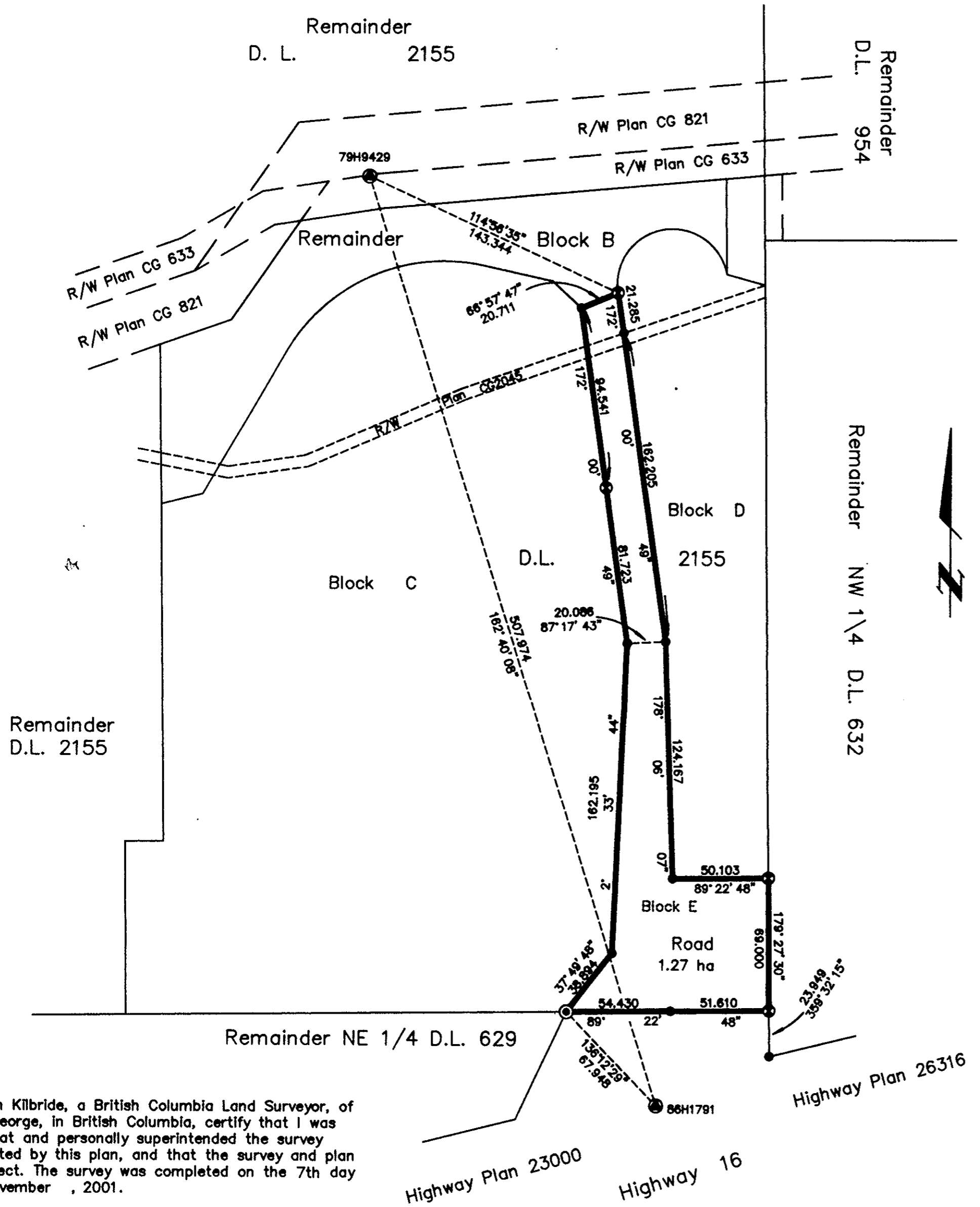


LEGEND

- ⊙ Standard Concrete Post Found
- Standard Capped Post Found
- Standard Iron Post Found
- Control Monument Found

Grid bearings are derived from observations between control monuments 86H1791 and 79H9429, integrated survey area number 39, City of Prince George, B.C. NAD83(CSRS)

Note: This plan shows ground level measured distances. Prior to computation of U.T.M. co-ordinates multiply by the combined factor 0.99950065



I, Gordon Kilbride, a British Columbia Land Surveyor, of Prince George, in British Columbia, certify that I was present at and personally superintended the survey represented by this plan, and that the survey and plan are correct. The survey was completed on the 7th day of November, 2001.

Gordon Kilbride
Gordon Kilbride, B.C.L.S.

This plan lies within the Fraser-Fort George Regional District.

KILBRIDE LAND SURVEYING LTD.
British Columbia Land Surveyors
Prince George, B.C.
Ph: (250) 562-1196 Fax: 562-3656

Approved under the Land Title Act this 4th day of March, 2002

[Signature]
Approving Officer
City of Prince George

The public highway through Crown land shown hereon is dedicated pursuant to Section 9(1) of the Ministry of Lands, Parks and Housing Act.

Original signed by *[Signature]*
for the Minister of Sustainable Resource Management
Victoria, B.C. this 8th day of MARCH, 2002.