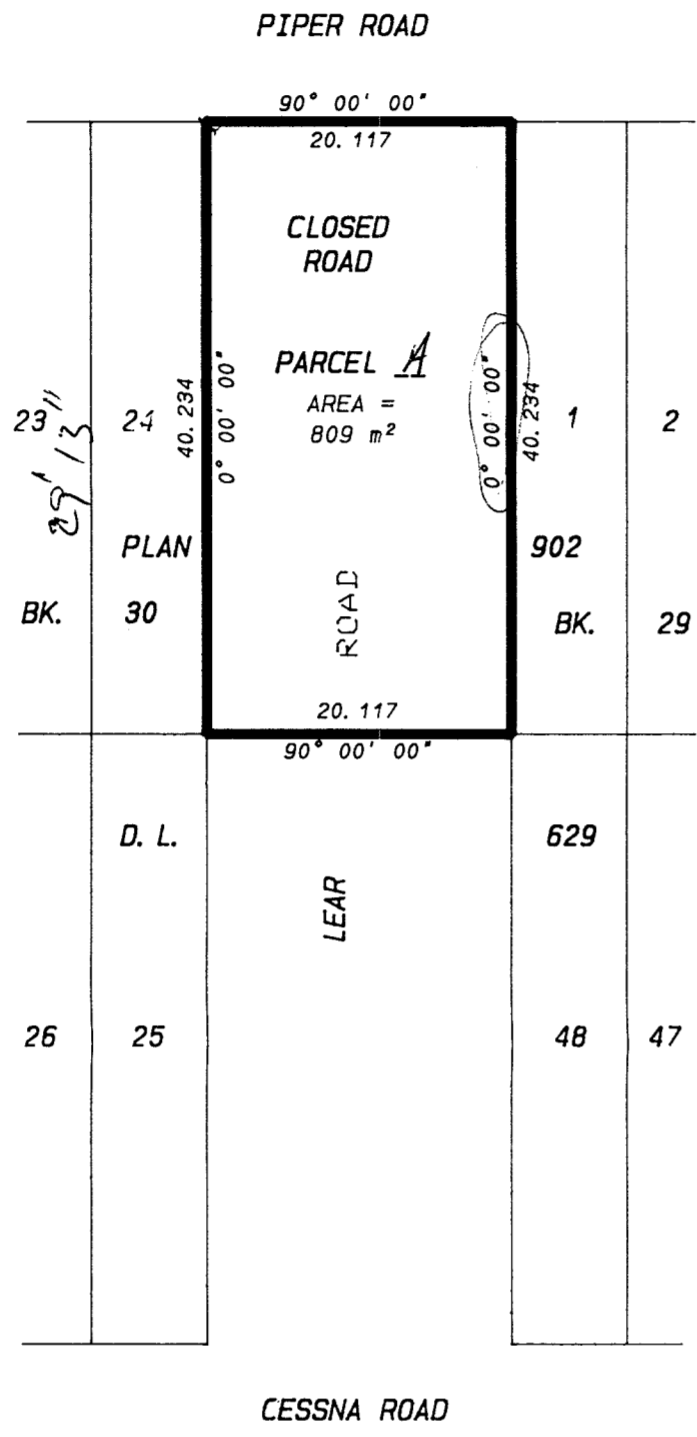


PLAN PGP 47722

Deposited in the Land Title Office
at Prince George B.C.
this 25 day of Feb, 2002

LK

Registrar



EXPLANATORY PLAN OF CLOSED ROAD TO ACCOMPANY CITY OF PRINCE GEORGE BYLAW NO. 7328 LYING ADJACENT TO LOT 1, BLOCK 29, D. L. 629, CARIBOO DISTRICT, PLAN 902

Pursuant to Section 120 (2) of the Land Title Act
Pursuant to Section 541 (1) (b) of the Local Government Act

SCALE 1: 500

LEGEND BCGS 936. 097

Bearings are astronomic, derived from Plan 902
All distances are in metres

This plan lies within the Fraser Fort George Regional District

Certified correct according to Land Title Office
Records this 4th day of January, 2001

Ronald L. Kral
Ronald L. Kral, B. C. L. S.

R. E. GOOK & ASSOCIATES
B. C. & CANADA LAND SURVEYORS

691 FRONT STREET * 886 VANCOUVER STREET
QUESNEL, B. C. V2J 2K9 PRINCE GEORGE, B. C. V2L 2P5
PHONE: 992-2424 PHONE: 564-4242
FAX: 992-3434 FAX: 564-5343

FILE: 00-0384PG