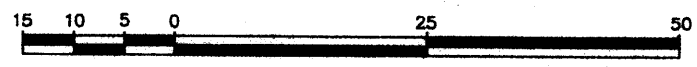


Deposited in the Land Title Office at Prince George this 14 day of FEB. 1993

REFERENCE PLAN OF EASEMENT OVER PART OF LOT B, PLAN PGP34990, DISTRICT LOT 2097, CARIBOO DISTRICT.

B.C.G.S. 93G.096

Scale: 1 : 750 (Distances are in metres)

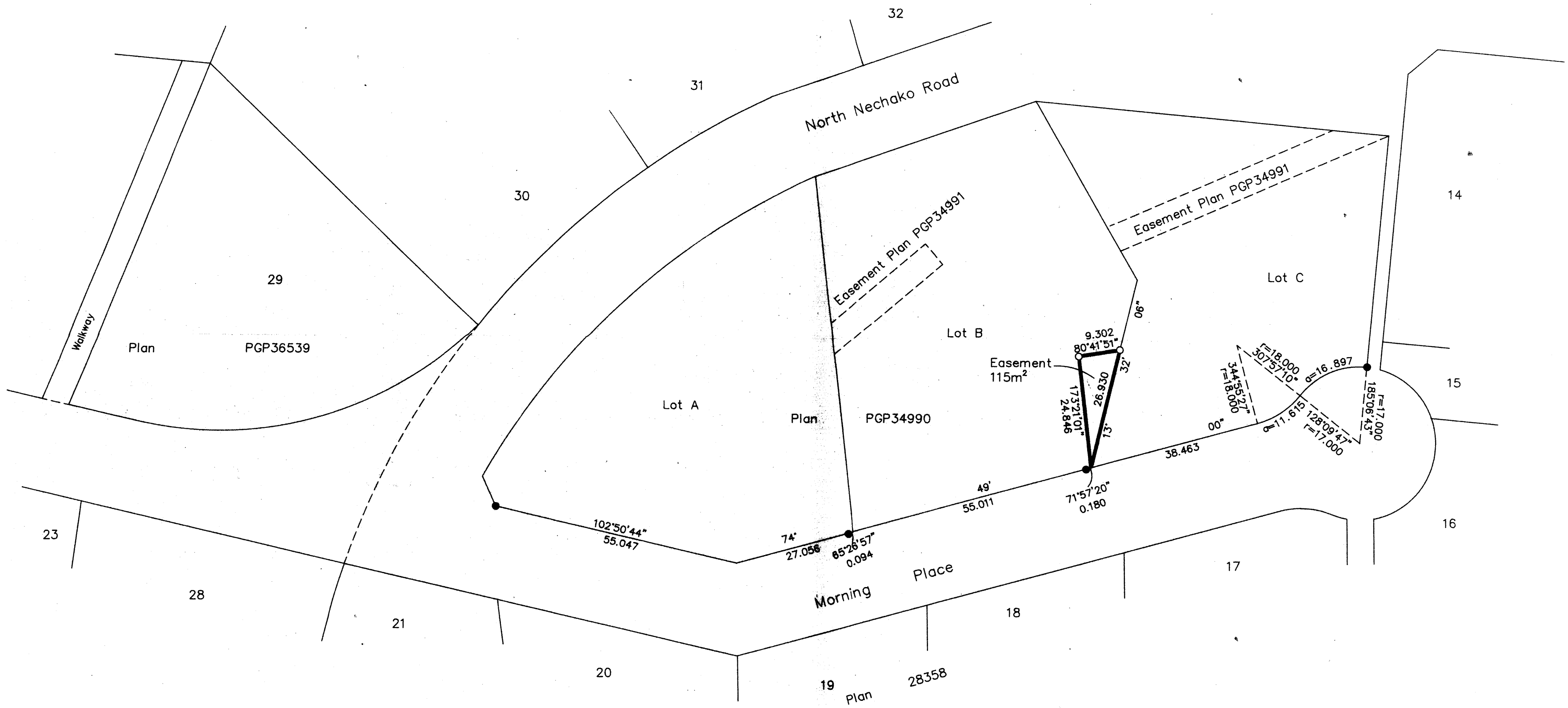


Bearings are astronomic, derived from Plan PGP34990.

LEGEND

- Standard Iron Post Found
- Standard Iron Post Placed

REGISTRAR



Pursuant to section 42 of the General Survey Instruction Regulation, this survey need not be integrated with the survey control.

*[Signature]*  
Deputy Surveyor General  
Victoria, B.C. October 20, 1993.

I, Gordon Kilbride, a British Columbia Land Surveyor of Prince George in British Columbia, certify that I was present at and personally superintended the survey represented by this plan and that the survey and plan are correct. The survey was completed on the 6th day of October, 1993.

*[Signature]*  
Gordon Kilbride, B.C.L.S.

This plan lies within the Fraser-Fort George Regional District.

KILBRIDE LAND SURVEYING LTD. British Columbia Land Surveyors Prince George, B.C. Ph: (604) 562-1196 Fax: 562-3656		
F.B.- RA	D.L.- 2097	REF. NO.- 930902