

PLAN OF STATUTORY RIGHT OF WAY THROUGH
 REM. PARCEL A (PLAN 18353), PLAN 1268
 DISTRICT LOT 343
 CARIBOO DISTRICT
 B.C.G.S. 93G.097

PURSUANT TO SECTION 113 OF THE LAND TITLE ACT.



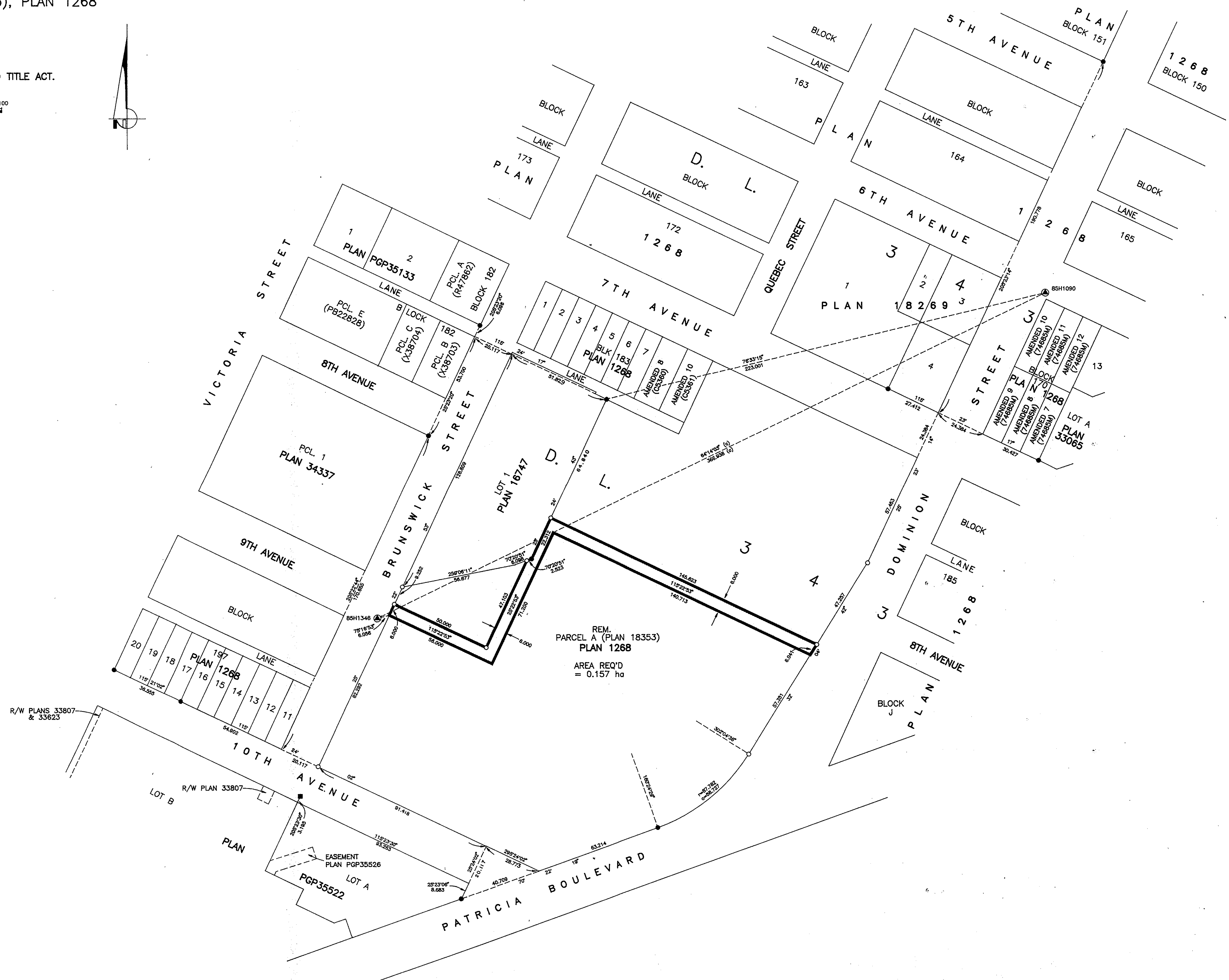
SCALE: 1 = 1000
 ALL DISTANCES SHOWN ARE IN METRES.

THIS PLAN SHOWS GROUND-LEVEL MEASURED DISTANCES.
 PRIOR TO COMPUTATION OF U.T.M. COORDINATES, MULTIPLY
 BY COMBINED FACTOR 0.99951615.

GRID BEARINGS ARE DERIVED FROM OBSERVATIONS
 BETWEEN CONTROL MONUMENTS BSH1090, AND BSH1346,
 INTEGRATED SURVEY AREA NUMBER 39, PRINCE GEORGE.

LEGEND

- STANDARD IRON POST FOUND
- STANDARD IRON POST PLACED
- ⊙ CONTROL MONUMENT
- LEAD PLUG



REM. PARCEL A (PLAN 18353)
 PLAN 1268
 AREA REQ'D
 = 0.157 ha

PLAN No. PGP 47617

DEPOSITED IN THE LAND TITLE OFFICE
 AT PRINCE GEORGE, B.C., THIS 16th
 DAY OF FEB. 2002

REGISTRAR

I, RONALD L. JOHNS, A BRITISH COLUMBIA LAND SURVEYOR OF PRINCE GEORGE, IN BRITISH COLUMBIA, CERTIFY THAT I WAS PRESENT AT AND PERSONALLY SUPERINTENDED THE SURVEY REPRESENTED BY THIS PLAN AND THAT THE SURVEY AND PLAN ARE CORRECT. THE SURVEY WAS COMPLETED ON THE 16TH DAY OF MARCH, 2000.

R. L. Johns
 R.L. JOHNS, B.C.L.S., C.L.S.

THIS PLAN LIES WITHIN THE FRASER-FORT GEORGE REGIONAL DISTRICT.

R. L. JOHNS LAND SURVEYING LTD.
 LEGAL AND ENGINEERING SURVEYS
 240 VICTORIA STREET
 PRINCE GEORGE, B.C. V2L 2A4
 PHONE: (250)562-5759
 FAX: (250)562-5703
 99161 CCS - 3-11