

PLAN OF STATUTORY RIGHT OF WAY THROUGH
 REM. PARCEL A (PLAN 18353), PLAN 1268
 DISTRICT LOT 343
 CARIBOO DISTRICT
 B.C.G.S. 93G.097

PLAN No. PGP *H7616*
 DEPOSITED IN THE LAND TITLE OFFICE
 AT PRINCE GEORGE, B.C., THIS *11*
 DAY OF *FEB*, 20 *02*

PURSUANT TO SECTION 113 OF THE LAND TITLE ACT.

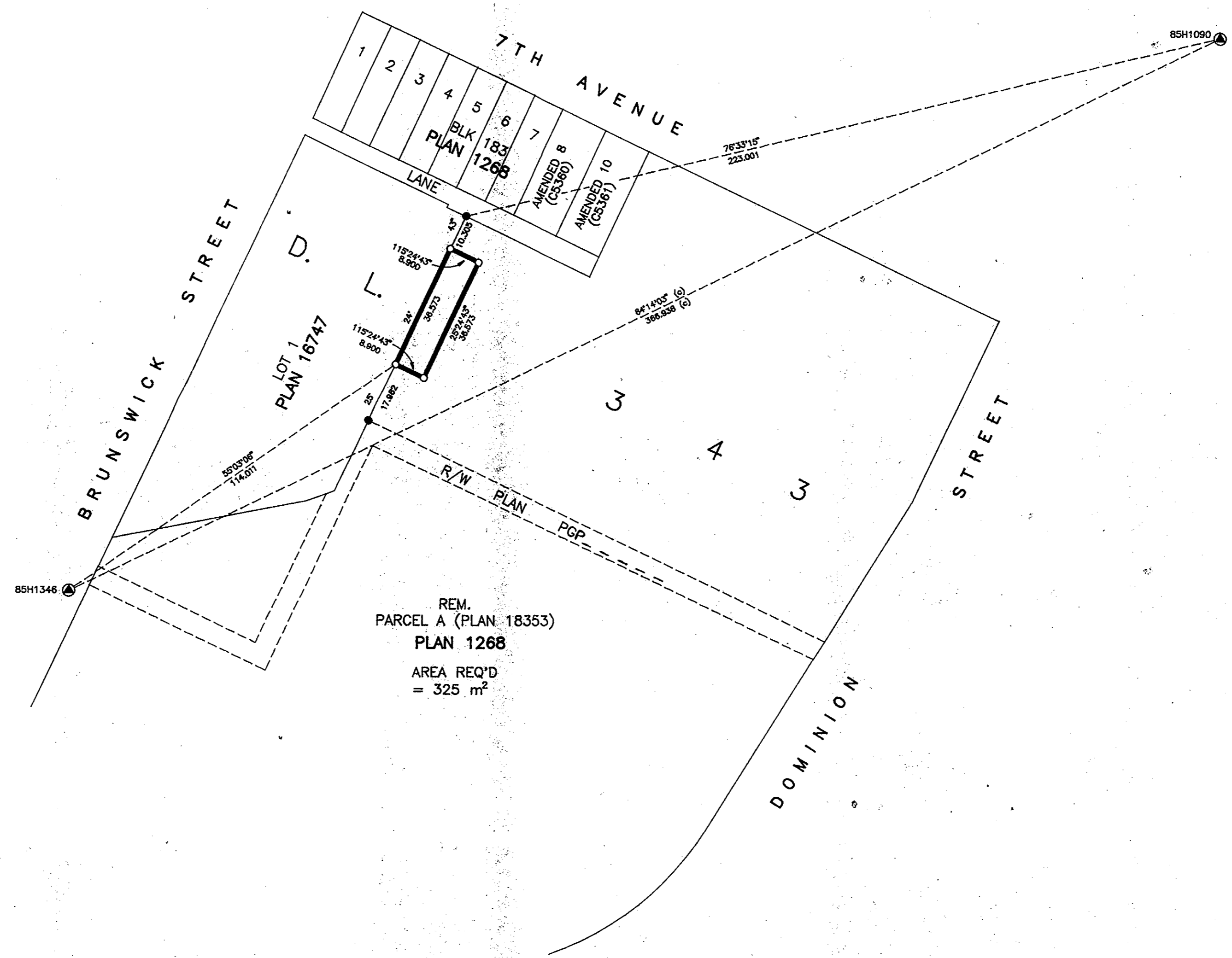


SCALE: 1 = 1000
 ALL DISTANCES SHOWN ARE IN METRES.

THIS PLAN SHOWS GROUND-LEVEL MEASURED DISTANCES.
 PRIOR TO COMPUTATION OF U.T.M. COORDINATES, MULTIPLY
 BY COMBINED FACTOR 0.99951615.

GRID BEARINGS ARE DERIVED FROM OBSERVATIONS
 BETWEEN CONTROL MONUMENTS 85H1090, AND 85H1346,
 INTEGRATED SURVEY AREA NUMBER 39, PRINCE GEORGE.

- LEGEND
- STANDARD IRON POST FOUND
 - STANDARD IRON POST PLACED
 - ⊙ CONTROL MONUMENT



REGISTRAR

I, RONALD L. JOHNS, A BRITISH COLUMBIA LAND SURVEYOR, OF PRINCE GEORGE, IN BRITISH COLUMBIA, CERTIFY THAT I WAS PRESENT AT AND PERSONALLY SUPERINTENDED THE SURVEY REPRESENTED BY THIS PLAN AND THAT THE SURVEY AND PLAN ARE CORRECT. THE SURVEY WAS COMPLETED ON THE 16TH DAY OF MARCH, 2000.

R.L. Johns
 R.L. JOHNS, B.C.L.S., C.L.S.

THIS PLAN LIES WITHIN THE FRASER-FORT GEORGE REGIONAL DISTRICT.

R. L. JOHNS LAND SURVEYING LTD.
 LEGAL AND ENGINEERING SURVEYS
 240 VICTORIA STREET
 PRINCE GEORGE, B. C. V2L 2J4
 PHONE: (250)562-5759
 FAX: (250)562-5703
 99160 CC5 - 3-11