

REGISTRAR *UK*

PLAN OF SUBDIVISION OF PART OF PARCEL 1, PLAN PGP43028, DISTRICT LOT 2508, CARIBOO DISTRICT.

Pursuant to Section 99(1)(h)(ii) of the Land Title Act.

B.C.G.S. 93G.096

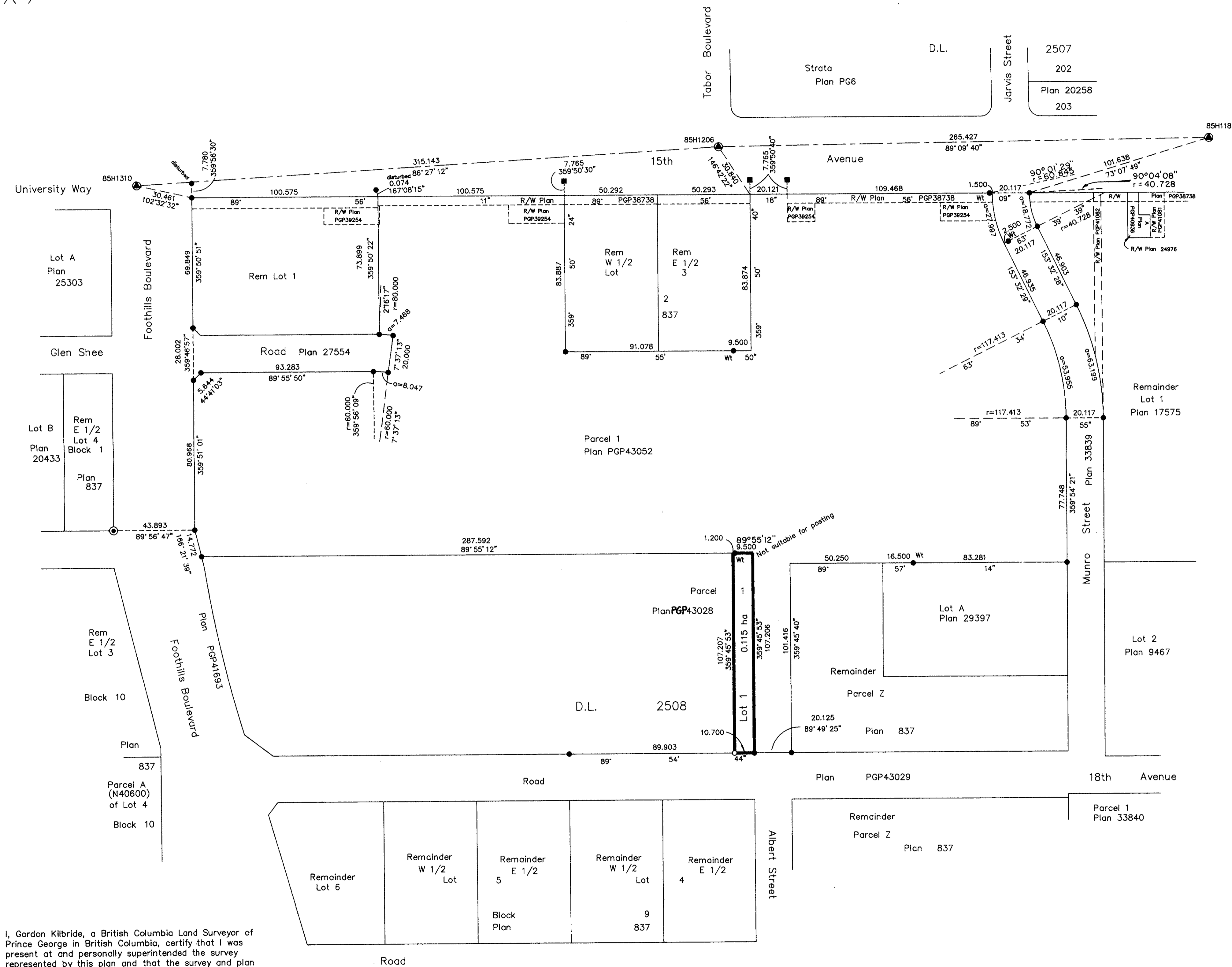
Scale: 1 : 1250 (Distances are in metres)



Grid bearings are derived from observations between control monuments 85H1206 and 85H1310, integrated survey area number 39, City of Prince George, B.C. NAD83(CSRS)

Note: This plan shows ground level measured distances. Prior to computation of U.T.M. co-ordinates multiply by the combined factor 0.99950925

- LEGEND**
- Standard Concrete Post Found
  - Lead Plug Found
  - Standard Iron Post Found
  - Standard Iron Post Placed
  - Control Monument Found



I, Gordon Kilbride, a British Columbia Land Surveyor of Prince George in British Columbia, certify that I was present at and personally superintended the survey represented by this plan and that the survey and plan are correct. The survey was completed on the 18th day of August, 2000.

*Gordon Kilbride*  
Gordon Kilbride, B.C.L.S.

This plan lies within the Fraser-Fort George Regional District.

**KILBRIDE LAND SURVEYING LTD.**  
British Columbia Land Surveyors  
Prince George, B.C.  
Ph: (250) 562-1196 Fax: 562-3656

I hereby certify that this is the Official Plan of the lands shown outlined hereon.

*A. B. Baker*  
For Surveyor General  
Victoria, B.C. August 23, 2001.