

1210

PLAN No. PGP 47537

DEPOSITED IN THE LAND TITLE OFFICE
AT PRINCE GEORGE, B.C., THIS 23
DAY OF JAN. 20 02

REGISTRAR

D.L.
6970

E. bdy D.L. 6970
W. bdy D.L. 483

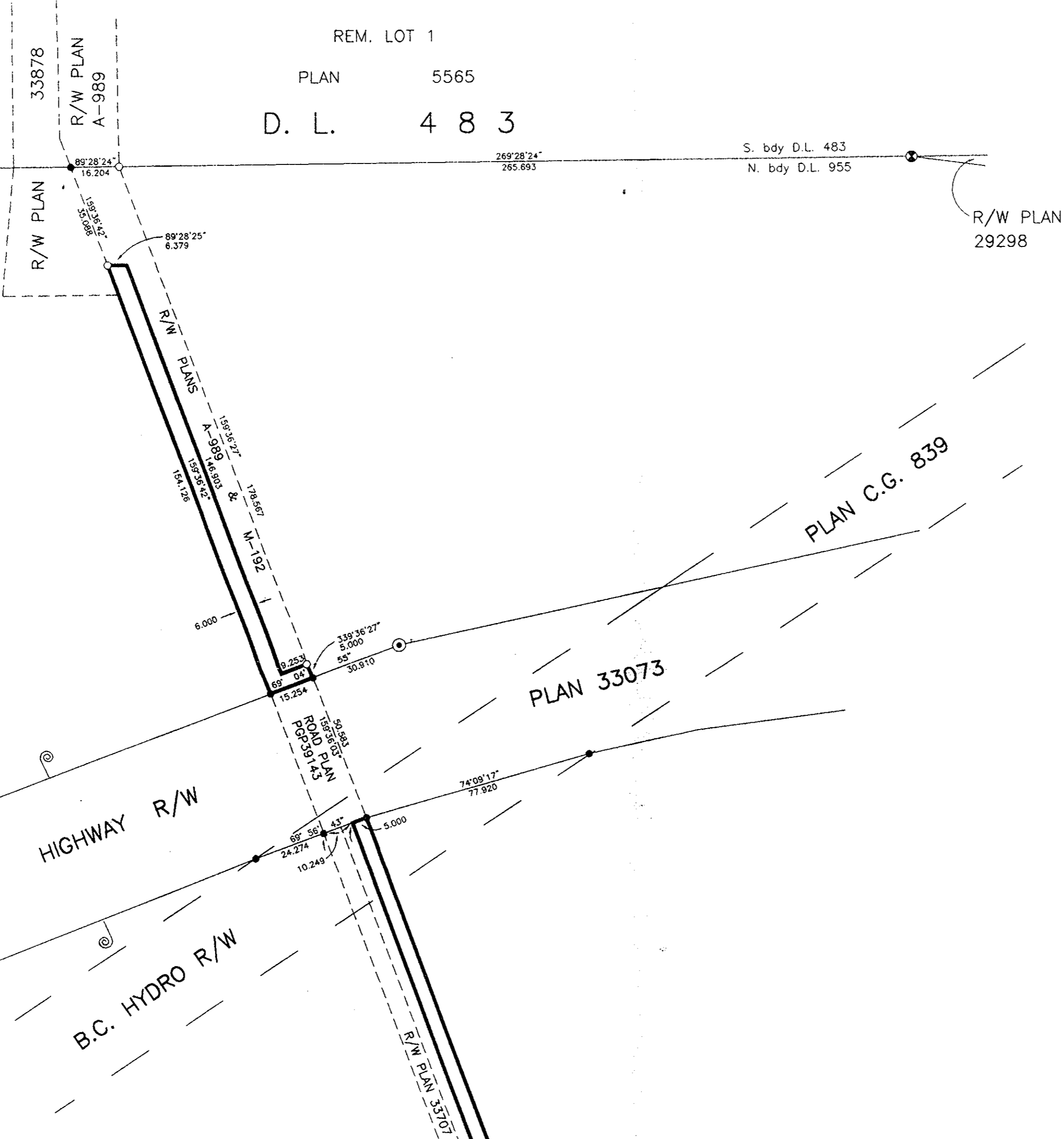
REM. LOT 1

PLAN 5565

D.L. 483

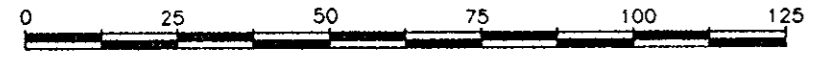
S. bdy D.L. 483
N. bdy D.L. 955

R/W PLAN
29298



REFERENCE PLAN OF STATUTORY
RIGHT-OF-WAY THROUGH
LOT 1, PLAN PGP39143
DISTRICT LOT 955
CARIBOO DISTRICT

B.C.G.S. 936.097
PURSUANT TO SECTION 113 OF THE LAND TITLE ACT.



SCALE = 1:1250

ALL DISTANCES SHOWN ARE IN METRES.

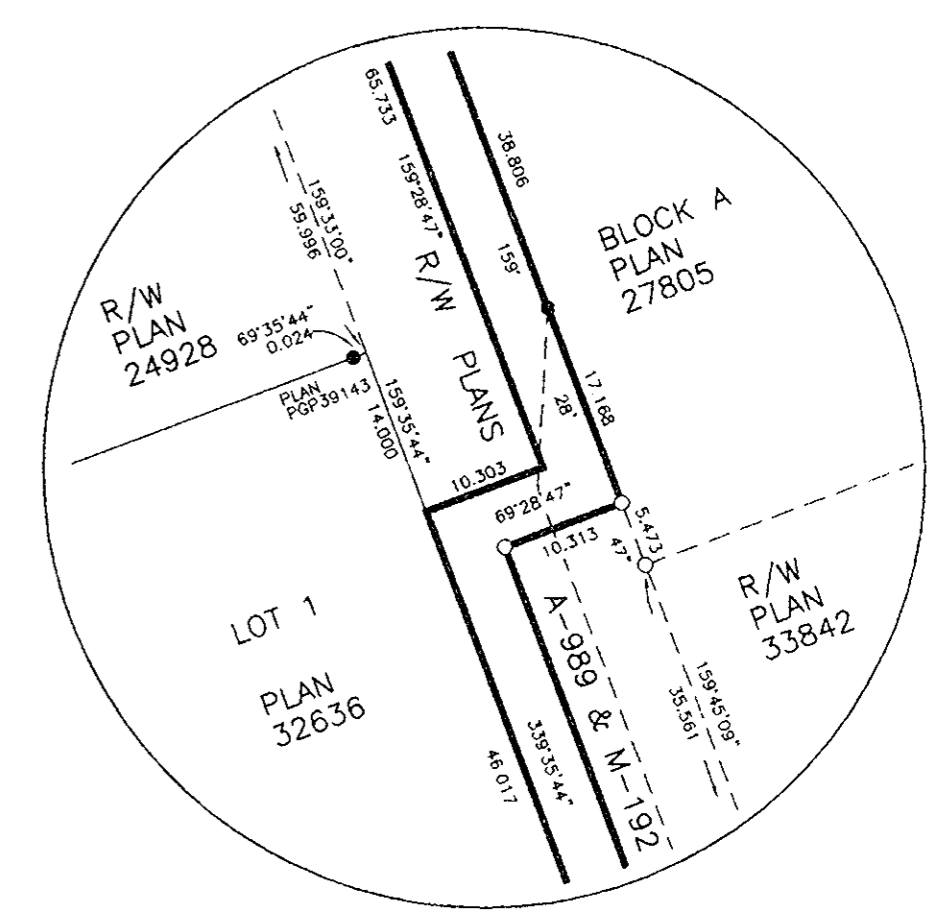
BEARINGS ARE ASTRONOMIC, DERIVED FROM THE NORTH
BOUNDARY OF LOT 1, PLAN PGP39143.

LEGEND

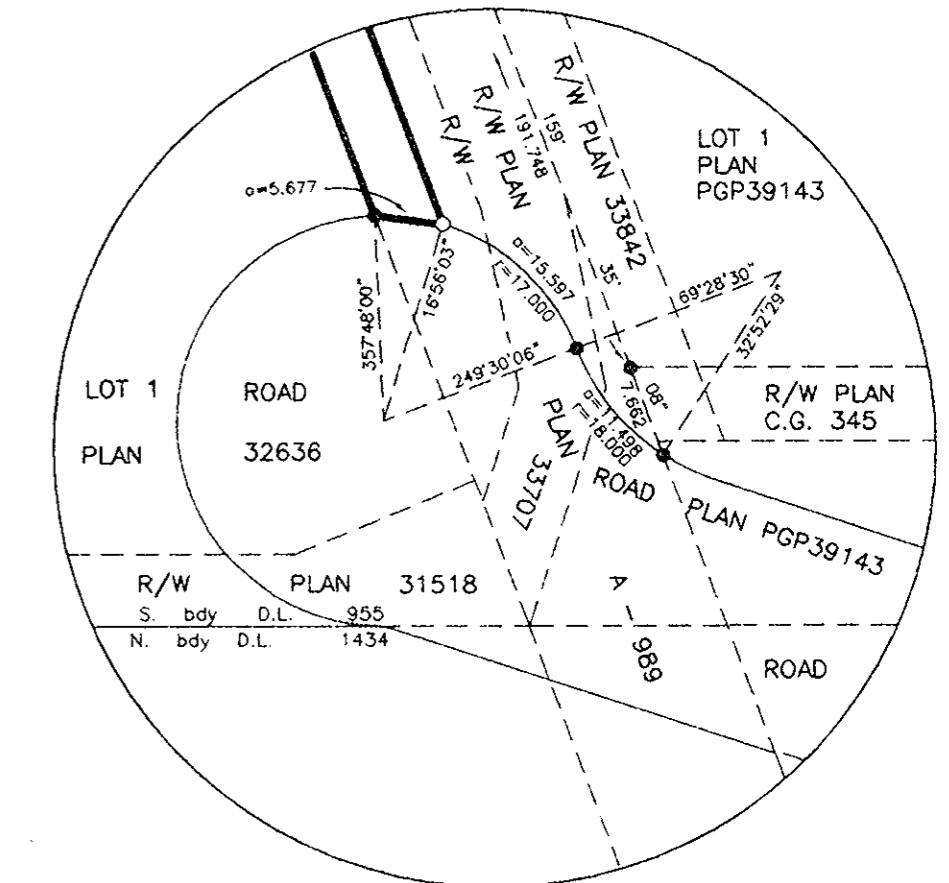
- STANDARD IRON POST FOUND
- STANDARD IRON POST PLACED
- ⊙ STANDARD CONCRETE POST FOUND
- ⊚ STANDARD CAPPED POST FOUND



LOT 1
PLAN PGP39143
AREA REQ'D = 0.437ha
D.L. 955



DETAIL
NO SCALE



DETAIL
NO SCALE

S. bdy D.L. 955
N. bdy D.L. 1434

R/W PLAN 31518

ROAD PLAN 34343

PARCEL 1
PLAN PGP36115

REM. D.L. 1434

THIS PLAN LIES WITHIN THE FRASER-FORT GEORGE REGIONAL DISTRICT.

I, RONALD L. JOHNS, A BRITISH COLUMBIA LAND SURVEYOR, OF PRINCE GEORGE, IN BRITISH COLUMBIA, CERTIFY THAT I WAS PRESENT AT AND PERSONALLY SUPERINTENDED THE SURVEY REPRESENTED BY THIS PLAN AND THAT THE SURVEY AND PLAN ARE CORRECT. THE SURVEY WAS COMPLETED ON THE 26TH DAY OF NOVEMBER, 2001.

R.L. Johns
R.L. JOHNS, B.C.L.S., C.L.S.

R. L. JOHNS LAND SURVEYING LTD.
LEGAL AND ENGINEERING SURVEYS
240 VICTORIA STREET
PRINCE GEORGE, B.C. V2L 2J4
PHONE: (250) 562-5759
FAX: (250) 562-5703
2001111A HH2-2,3,6,7

L70 010906