

PLAN OF STATUTORY RIGHT OF WAY OVER UNSURVEYED CROWN LAND (BEING THE BED OF THE NECHAKO RIVER) BETWEEN DISTRICT LOTS 1427 AND 12912, CARIBOO DISTRICT. Pursuant to Section 113 of the Land Title Act B.C.G.S. 93G.097

PLAN NO. PGP 47264

Deposited in the Land Title Office at Prince George this 15 day of Nov. 2001.

"LK"
REGISTRAR

P53 8953

Scale: 1 : 2500 (Distances are in metres)

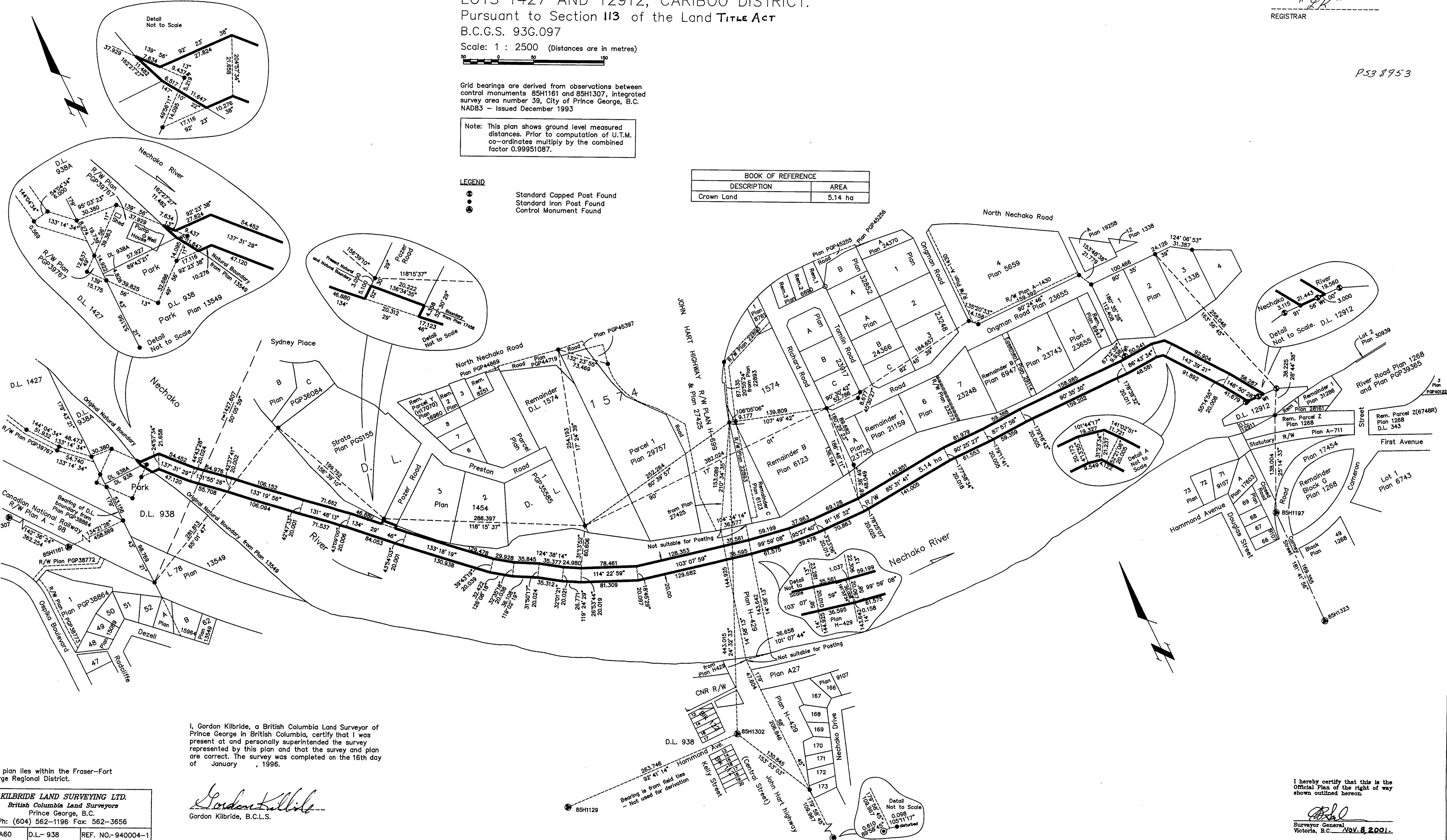


Grid bearings are derived from observations between control monuments 85H1161 and 85H1307, integrated survey area number 39, City of Prince George, B.C. NAD83 - Issued December 1993

Note: This plan shows ground level measured distances. Prior to computation of U.T.M. co-ordinates multiply by the combined factor 0.99951087.

- LEGEND**
- Standard Capped Post Found
 - Standard Iron Post Found
 - Control Monument Found

BOOK OF REFERENCE	
DESCRIPTION	AREA
Crown Land	5.14 ha



I, Gordon Kilbride, a British Columbia Land Surveyor of Prince George in British Columbia, certify that I was present at and personally superintended the survey represented by this plan and that the survey and plan are correct. The survey was completed on the 16th day of January, 1996.

Gordon Kilbride
Gordon Kilbride, B.C.L.S.

This plan lies within the Fraser-Fort George Regional District.

KILBRIDE LAND SURVEYING LTD.
British Columbia Land Surveyors
Prince George, B.C.
Ph: (604) 562-1196 Fax: 562-3656
F.B.- UA60 D.L.- 938 REF. NO.- 940004-1

I hereby certify that this is the Official Plan of the right of way shown outlined hereon.
[Signature]
Surveyor General
Victoria, B.C. Nov. 8 2001.