

PLAN OF STATUTORY RIGHT OF WAY THROUGH
 REM. LOT 1, PLAN 21853, LOT A, PLAN 30267,
 REM. LOT A, PLAN 19913 AND LOT 1, PLAN 26013
 DISTRICT LOT 2424
 CARIBOO DISTRICT

B.C.G.S. 93J.006
 PURSUANT TO SECTION 113 OF THE LAND TITLE ACT.



SCALE: 1 = 1250
 ALL DISTANCES SHOWN ARE IN METRES.

THIS PLAN SHOWS GROUND-LEVEL MEASURED DISTANCES.
 PRIOR TO COMPUTATION OF U.T.M. COORDINATES, MULTIPLY
 BY COMBINED FACTOR 0.9994837.

GRID BEARINGS ARE DERIVED FROM OBSERVATIONS
 BETWEEN CONTROL MONUMENTS 86H1598, AND 86H1647.
 INTEGRATED SURVEY AREA NUMBER 39, PRINCE GEORGE.

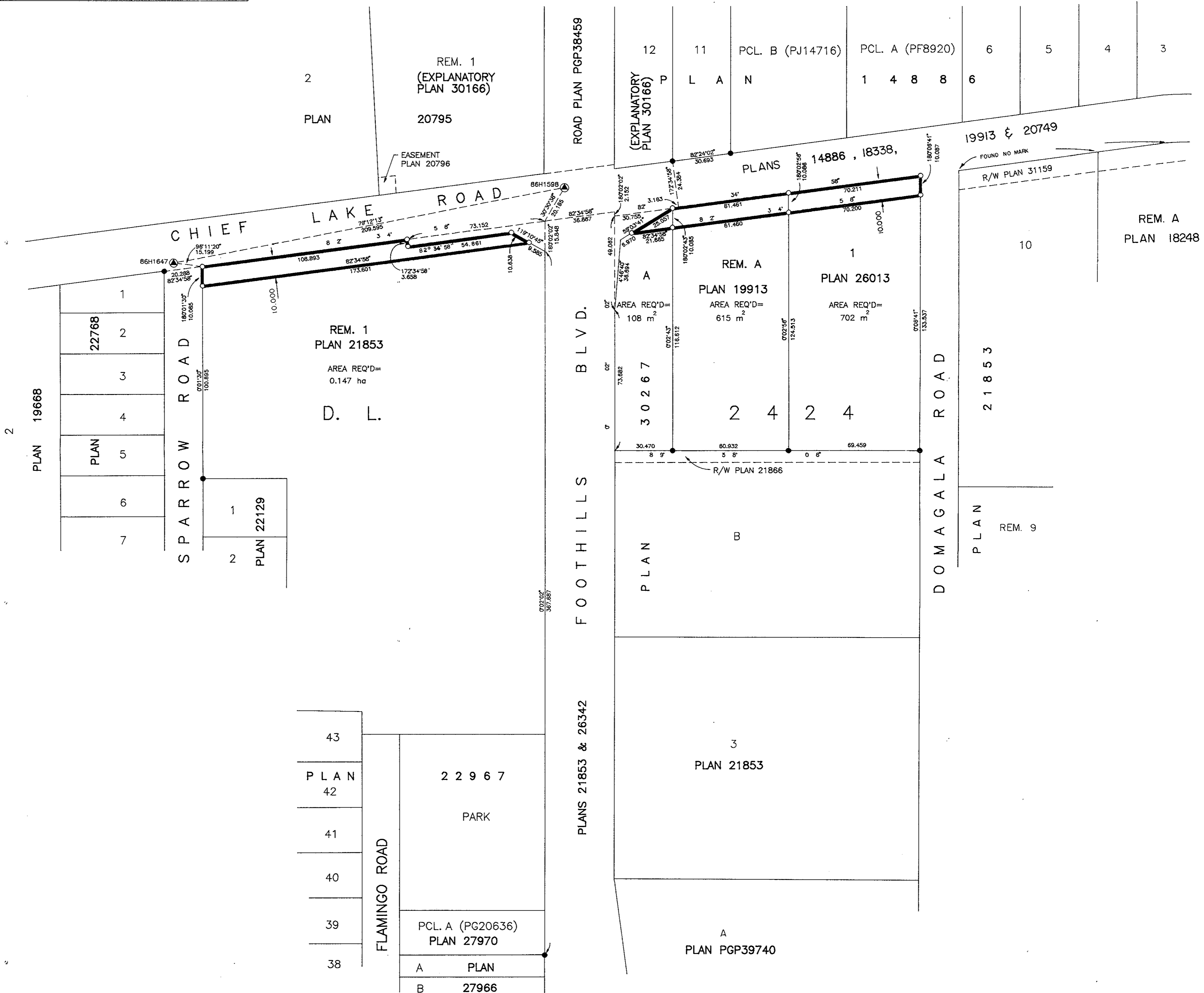
LEGEND

- STANDARD IRON POST FOUND
- STANDARD IRON POST PLACED
- ▲ CONTROL MONUMENT

BOOK OF REFERENCE

PARCEL	AREA REQ'D
REM. LOT 1, PLAN 21853, D.L. 2424	0.147ha
LOT A, PLAN 30267, D.L. 2424	108m ²
REM. LOT A, PLAN 19913, D.L. 2424	615m ²
LOT 1, PLAN 26013, D.L. 2424	702m ²

PLAN No. PGP 47083
 DEPOSITED IN THE LAND TITLE OFFICE
 AT PRINCE GEORGE, B.C., THIS 07
 DAY OF SEPT, 2001
 REGISTRAR



I, RONALD L. JOHNS, A BRITISH COLUMBIA LAND SURVEYOR, OF PRINCE GEORGE, IN BRITISH COLUMBIA, CERTIFY THAT I WAS PRESENT AT AND PERSONALLY SUPERINTENDED THE SURVEY REPRESENTED BY THIS PLAN AND THAT THE SURVEY AND PLAN ARE CORRECT. THE SURVEY WAS COMPLETED ON THE 28TH DAY OF MAY, 2001.

R.L. Johns
 R.L. JOHNS, B.C.L.S., C.L.S.

THIS PLAN LIES WITHIN THE FRASER-FORT GEORGE REGIONAL DISTRICT.

R. L. JOHNS LAND SURVEYING LTD.
 LEGAL AND ENGINEERING SURVEYS
 240 VICTORIA STREET
 PRINCE GEORGE, B.C. V2L 2J4
 PHONE: (250)562-5759
 FAX: (250)562-5703