

EXPLANATORY PLAN TO ACCOMPANY
 A LEASE OF THE MAIN FLOOR OF A BUILDING ON
 PARCEL B(PE12656), BLOCK 189, PLAN 1268
 DISTRICT LOT 343
 CARIBOO DISTRICT.

PLAN No. PGP 46859

DEPOSITED IN THE LAND TITLE OFFICE
 AT PRINCE GEORGE, B.C., THIS 17th
 DAY OF June, 2001.

REGISTRAR *Lk*

B.C.G.S. 93G.097

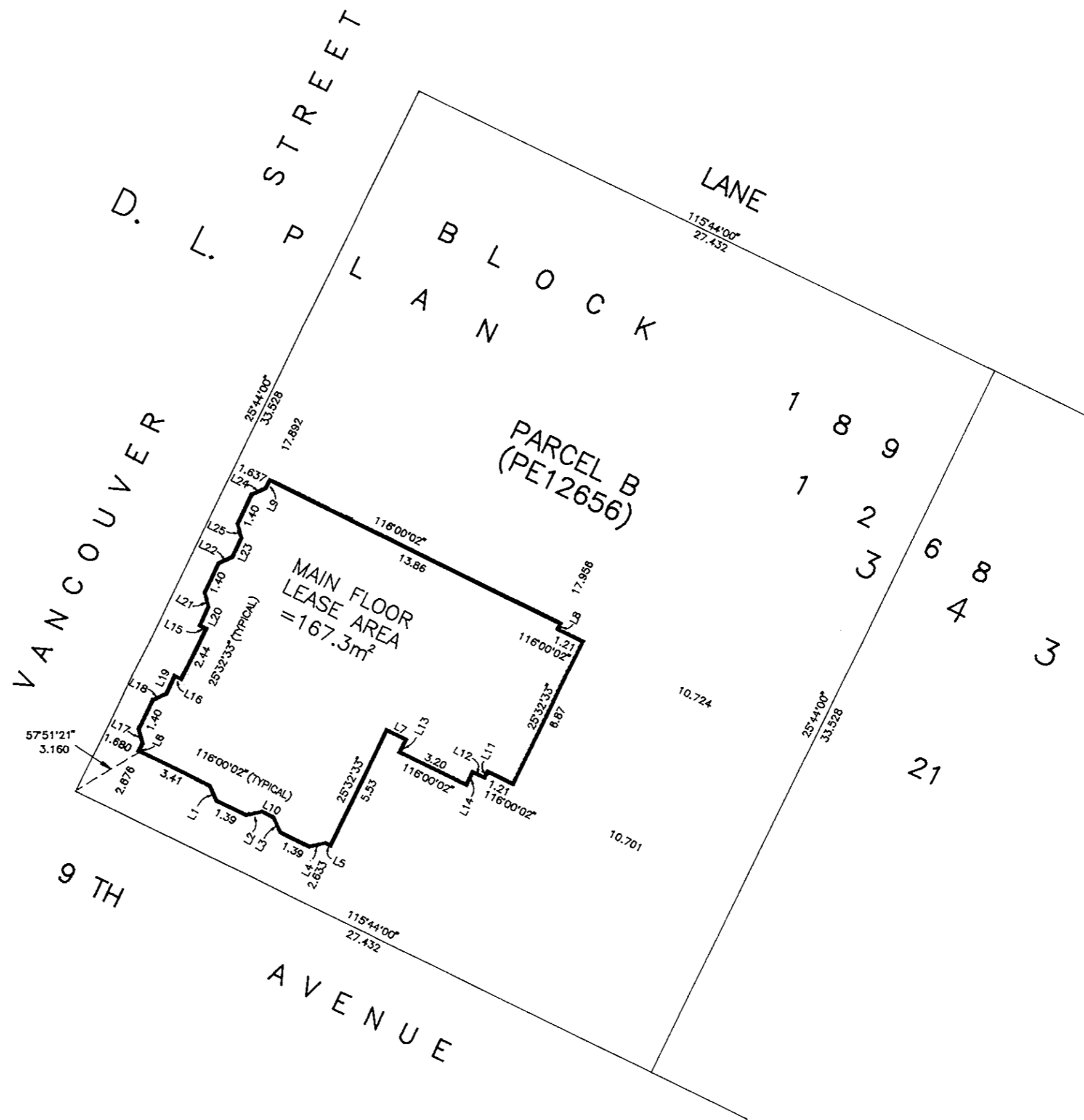
PURSUANT TO SECTION 99 OF LAND TITLE ACT.



SCALE: 1 = 200

ALL DISTANCES ARE SHOWN IN METRES

BEARINGS ARE ASTRONOMIC, DERIVED FROM PLAN 1268.



LINE TABLE					
Line No.	Bearing	Distance	Line No.	Bearing	Distance
1	334°58'44"	0.70	14	205°32'33"	0.61
2	77°03'20"	0.70	15	296°00'02"	0.31
3	334°56'44"	0.70	16	296°00'02"	0.31
4	77°03'20"	0.70	17	165°42'14"	0.64
5	296°00'02"	0.25	18	65°22'51"	0.64
6	25°32'33"	0.36	19	25°32'33"	0.86
7	116°00'02"	0.92	20	25°32'33"	0.87
8	205°32'33"	0.27	21	345°42'14"	0.64
9	205°32'33"	0.40	22	245°22'51"	0.64
10	116°00'02"	0.57	23	25°32'33"	0.88
11	25°32'33"	0.29	24	245°22'51"	0.64
12	296°00'02"	0.55	25	165°42'14"	0.64
13	205°32'33"	0.61			

CERTIFIED CORRECT
 ACCORDING TO LAND TITLE OFFICE RECORDS
 AND FIELD MEASUREMENTS
 THIS 23RD DAY OF MAY, 2001.

R. L. Johns
 R. L. JOHNS, B.C.L.S., C.L.S.

THIS PLAN LIES WITHIN THE FRASER-FORT GEORGE REGIONAL DISTRICT.

R. L. JOHNS LAND SURVEYING LTD.
 LEGAL AND ENGINEERING SURVEYS
 240 VICTORIA STREET
 PRINCE GEORGE, B. C. V2L 2J4
 PHONE: (250)562-5759
 FAX: (250)562-5703

2001039 BB3-12,13