

REFERENCE PLAN OF EASEMENT OVER
 LOT B, PLAN PGP 46838,
 DISTRICT LOT 2507,
 CARIBOO DISTRICT.
 Pursuant to Section 99 of
 the Land Title Act.
 B.C.G.S. 93G.097

PLAN NO. PGP 46840

Deposited in the Land Title Office at Prince
 George this 1st day of June, 2001.

 REGISTRAR

Scale: 1 : 750 (Distances are in metres)

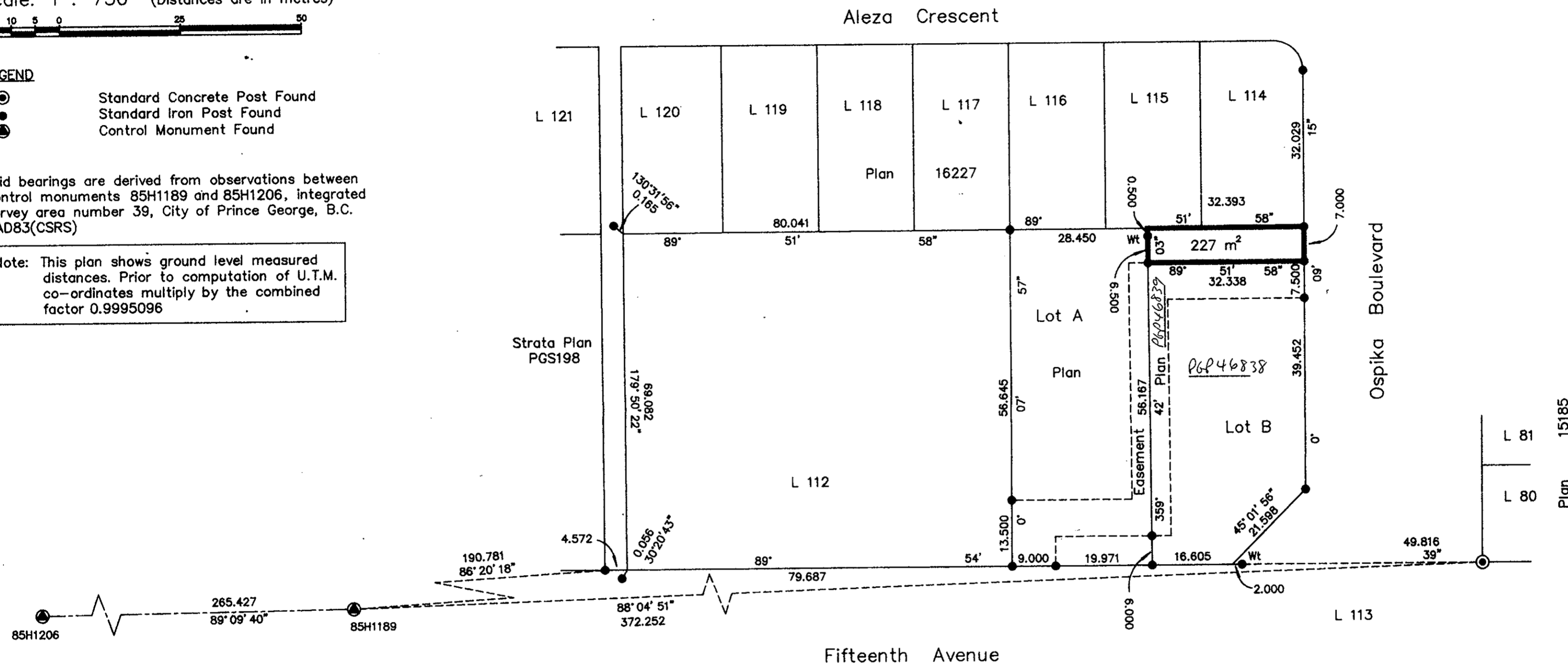


LEGEND

- ⊙ Standard Concrete Post Found
- Standard Iron Post Found
- ⊕ Control Monument Found

Grid bearings are derived from observations between
 control monuments 85H1189 and 85H1206, integrated
 survey area number 39, City of Prince George, B.C.
 NAD83(CSRS)

Note: This plan shows ground level measured
 distances. Prior to computation of U.T.M.
 co-ordinates multiply by the combined
 factor 0.9995096



I, Gordon Kilbride, a British Columbia Land Surveyor, of
 Prince George, in British Columbia, certify that I was
 present at and personally superintended the survey
 represented by this plan, and that the survey and plan
 are correct. The survey was completed on the 3 day
 of May, 2001.

Gordon Kilbride
 Gordon Kilbride, B.C.L.S.

This plan lies within the Fraser-Fort
 George Regional District.

KILBRIDE LAND SURVEYING LTD.		
British Columbia Land Surveyors		
Prince George, B.C.		
Ph: (250) 562-1196 Fax: 562-3656		
F.B. WQ37	D.L. 2507	File No. 010007E2