

REFERENCE PLAN OF EASEMENT OVER
 LOTS A AND B, PLAN PGP46838,
 DISTRICT LOT 2507,
 CARIBOO DISTRICT.

Pursuant to Section 99 of
 the Land Title Act.

B.C.G.S. 93G.097

Scale: 1 : 750 (Distances are in metres)



LEGEND

- ⊙ Standard Concrete Post Found
- Standard Iron Post Found
- Standard Iron Post Placed
- ⊗ Control Monument Found

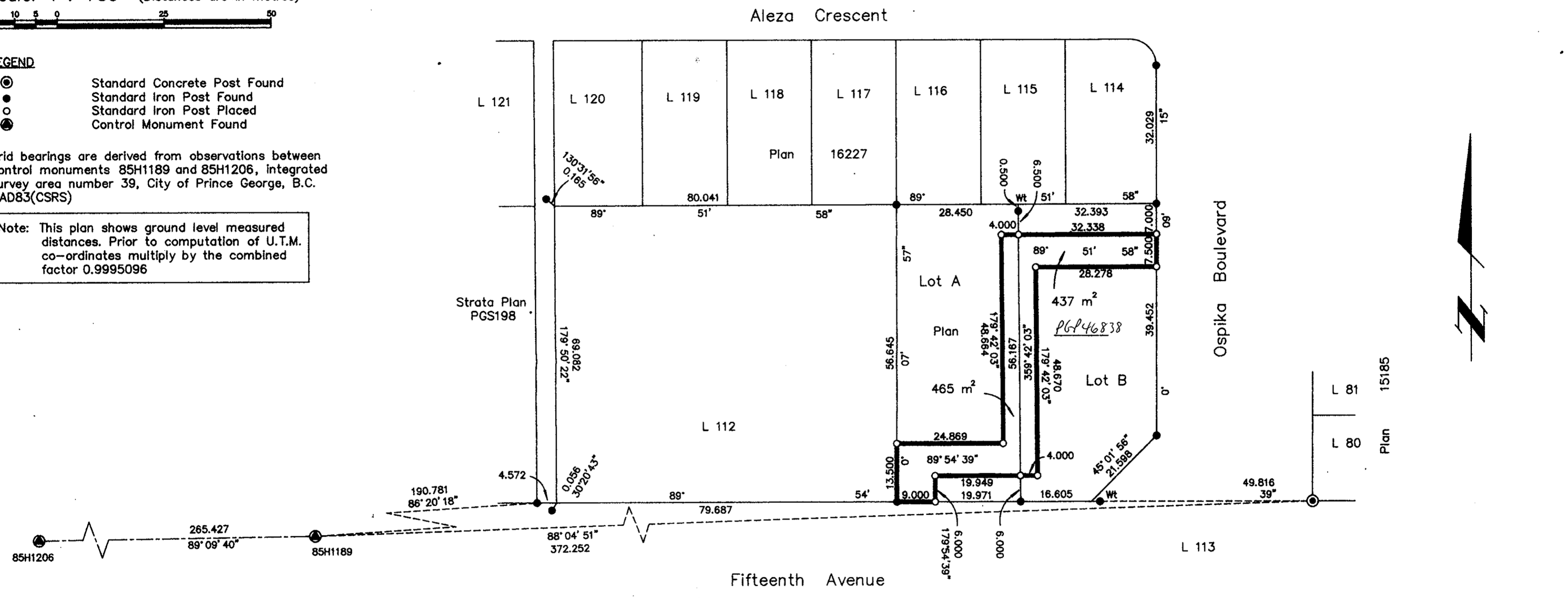
Grid bearings are derived from observations between control monuments 85H1189 and 85H1206, integrated survey area number 39, City of Prince George, B.C. NAD83(CSRS)

Note: This plan shows ground level measured distances. Prior to computation of U.T.M. co-ordinates multiply by the combined factor 0.9995096

PLAN NO. PGP 46839

Deposited in the Land Title Office at Prince George this 1st day of June, 2001.

 REGISTRAR



I, Gordon Kilbride, a British Columbia Land Surveyor, of Prince George, in British Columbia, certify that I was present at and personally superintended the survey represented by this plan, and that the survey and plan are correct. The survey was completed on the 3 day of May, 2001.

Gordon Kilbride
 Gordon Kilbride, B.C.L.S.

This plan lies within the Fraser-Fort George Regional District.

KILBRIDE LAND SURVEYING LTD. British Columbia Land Surveyors Prince George, B.C. Ph: (250) 562-1196 Fax: 562-3656		
F.B. WQ37	D.L. 2507	File No. 010 007E