

PLAN OF SUBDIVISION OF
LOT 111, PLAN 16227,
DISTRICT LOT 2507,
CARIBOO DISTRICT.

B.C.G.S. 93G.097

Scale: 1 : 750 (Distances are in metres)



LEGEND

- ⊙ Standard Concrete Post Found
- Standard Iron Post Found
- Standard Iron Post Placed
- ⊕ Control Monument Found

Grid bearings are derived from observations between control monuments 85H1189 and 85H1206, integrated survey area number 39, City of Prince George, B.C. NAD83(CSRS)

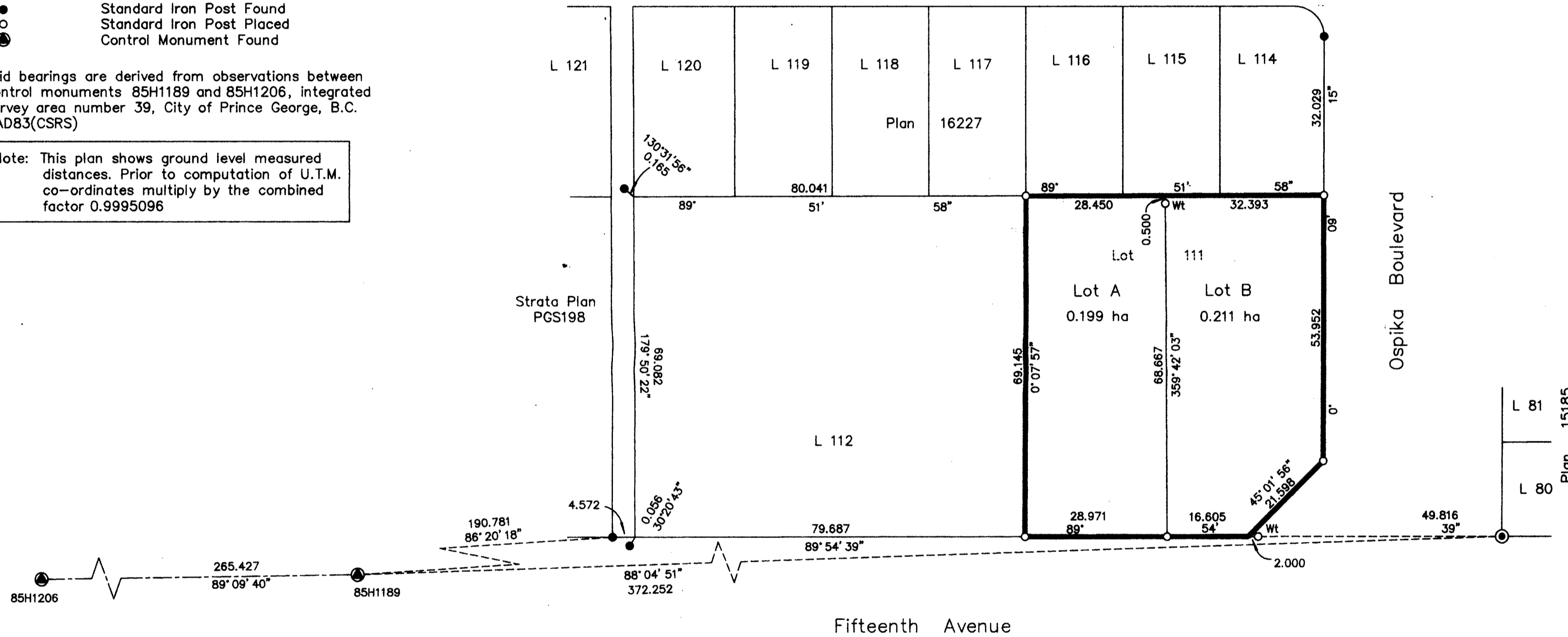
Note: This plan shows ground level measured distances. Prior to computation of U.T.M. co-ordinates multiply by the combined factor 0.9995096

PLAN NO. PGP 46838

Deposited in the Land Title Office at Prince George this 1st day of June, 2001.

REGISTRAR

Aleza Crescent



I, Gordon Kilbride, a British Columbia Land Surveyor, of Prince George, in British Columbia, certify that I was present at and personally superintended the survey represented by this plan, and that the survey and plan are correct. The survey was completed on the 3 day of May, 2001.

Gordon Kilbride
Gordon Kilbride, B.C.L.S.

Owner: Church of the Nazarene - Canada Pacific District
Reg. #S:355

Authorized Signatory
WESLEY G. CAMPBELL
Print Name

Authorized Signatory
GWEN GROBE
Print Name

Witness to both

Print Name
MARIE-LOUISE PAST (STOL)
Address
**BARISTER & SOLICITOR
999 - 9171 ACHROYD RD.
PRINCE GEORGE, B.C. V2N 3M9
Phone: (250) 573-0444**
Postal Code

Occupation

Approved under the Land Title Act this 1st day of June, 2001
Kristina
Approving Officer
City of Prince George

This plan lies within the Fraser-Fort George Regional District.

KILBRIDE LAND SURVEYING LTD.
British Columbia Land Surveyors
Prince George, B.C.
Ph: (250) 562-1196 Fax: 562-3656
F.B. WQ37 | D.L. 2507 | File No. 010 007S