

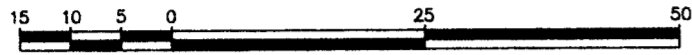
PLAN OF SUBDIVISION
OF REMAINDER LOT A,
PLAN 11134, DISTRICT
LOT 635, CARIBOO DISTRICT.
B.C.G.S. 93G.097

PLAN NO. PGP 46761

Deposited in the Land Title Office at Prince
George this 10 day of May, 2001.

LKV
REGISTRAR

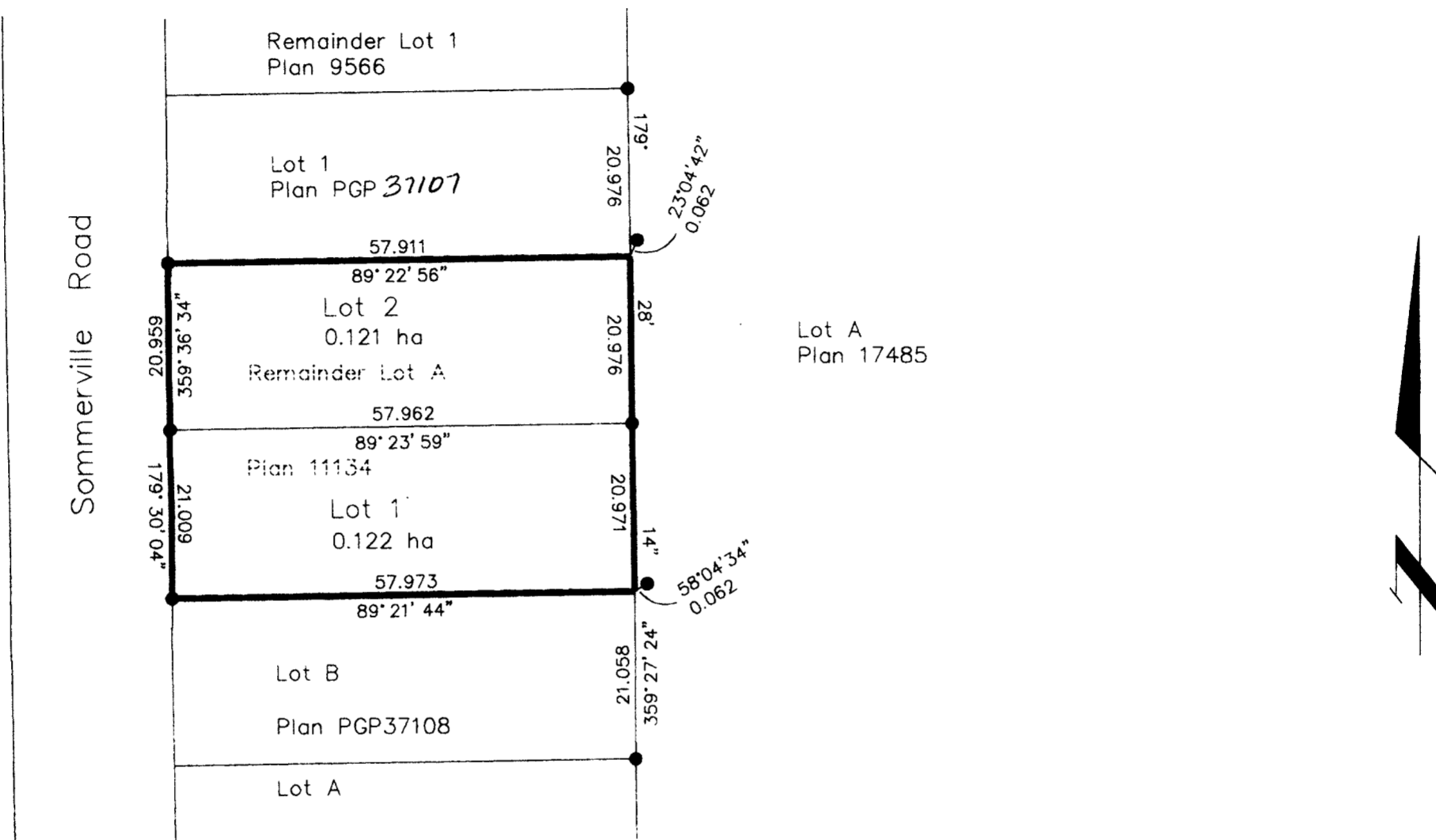
Scale: 1 : 750 (Distances are in metres)



Bearings are astronomic, derived from
Plan PGP37108 - 179°28'14"

LEGEND

- Standard Iron Post Found



I, Gordon Kilbride, a British Columbia Land Surveyor, of Prince George, in British Columbia, certify that I was present at and personally superintended the survey represented by this plan, and that the survey and plan are correct. The survey was completed on the 17th day of April, 2001.

Pursuant to section 42 of the General Survey Instruction Regulations, this survey need not be integrated with the survey control.

Surveyor General
Victoria, B.C. this 4th day of May, 2001.

Gordon Kilbride, B.C.L.S.

Owner:

Jacqueline Anne Muise

Gordon Kilbride

Gordon Kilbride

185 Quebec Street

Prince George V2L 1W1
Postal Code

B C Land Surveyor
Occupation

Approved under the Land Title Act this 9th day of May, 2001

Kees R. J. J.
Approving Officer
City of Prince George

This plan lies within the Fraser-Fort George Regional District.

KILBRIDE LAND SURVEYING LTD. British Columbia Land Surveyors Prince George, B.C. Ph: (250) 562-1196 Fax: 562-3656		
F.B. WT35	D.L. 635	File No. 010 022