

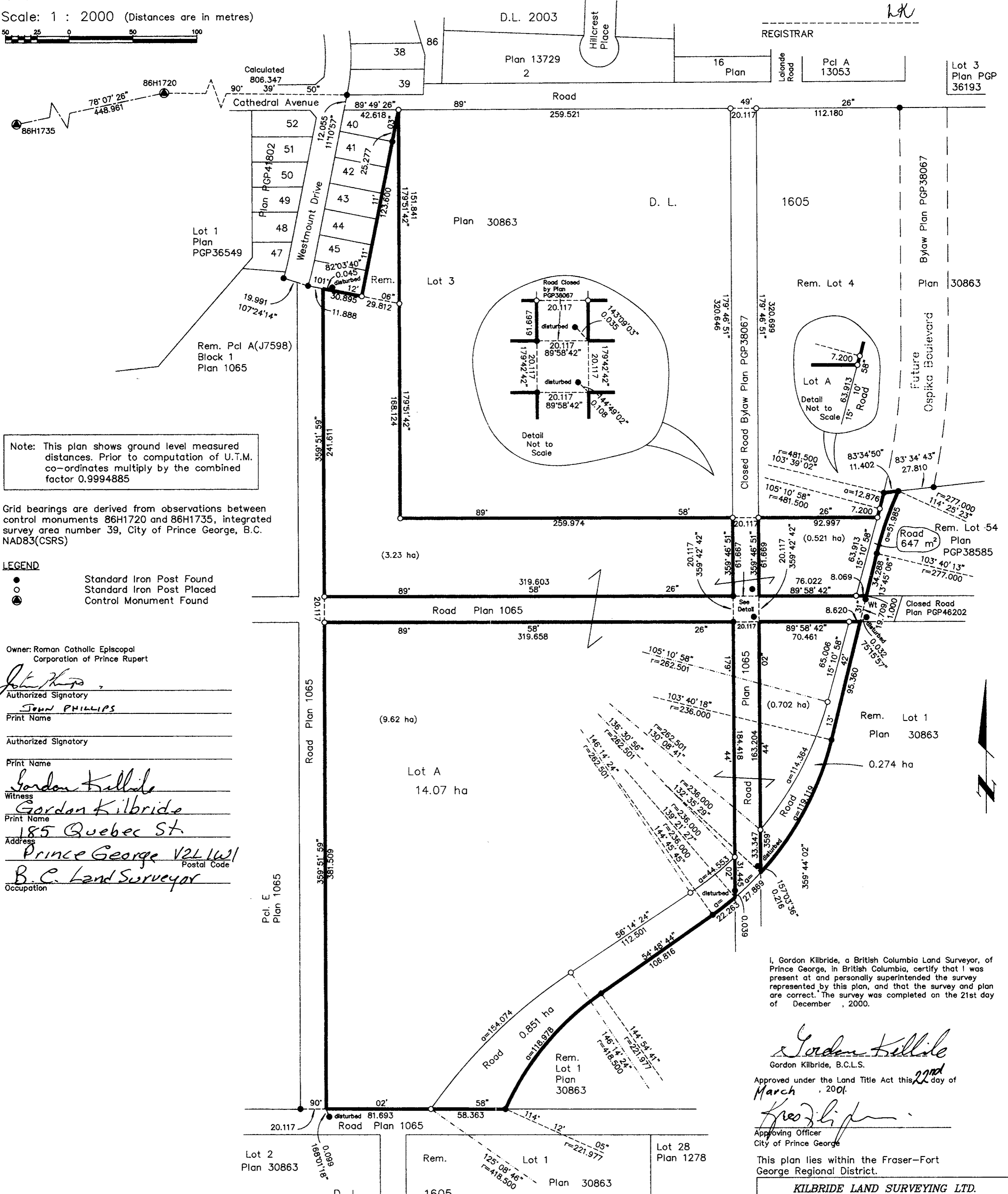
PLAN OF SUBDIVISION OF PARTS OF THE  
REMAINDERS OF LOTS 3 AND 4, PLAN 30863,  
DISTRICT LOT 1605, CARIBOO DISTRICT.

PLAN NO. PGP 46571

Deposited in the Land Title Office at Prince  
George this 12 day of MAR, 2001.

B.C.G.S. 93G.087

Scale: 1 : 2000 (Distances are in metres)



Note: This plan shows ground level measured distances. Prior to computation of U.T.M. co-ordinates multiply by the combined factor 0.9994885

Grid bearings are derived from observations between control monuments 86H1720 and 86H1735, integrated survey area number 39, City of Prince George, B.C. NAD83(CSRS)

- LEGEND**
- Standard Iron Post Found
  - Standard Iron Post Placed
  - ⊙ Control Monument Found

Owner: Roman Catholic Episcopal Corporation of Prince Rupert

Authorized Signatory  
*John Phillips*  
Print Name: JOHN PHILLIPS

Authorized Signatory  
*Gordon Kilbride*  
Print Name: Gordon Kilbride  
Witness: *Gordon Kilbride*  
Print Name: Gordon Kilbride  
Address: 185 Quebec St, Prince George V2L 1W1  
Occupation: B.C. Land Surveyor

I, Gordon Kilbride, a British Columbia Land Surveyor, of Prince George, in British Columbia, certify that I was present at and personally superintended the survey represented by this plan, and that the survey and plan are correct. The survey was completed on the 21st day of December, 2000.

*Gordon Kilbride*  
Gordon Kilbride, B.C.L.S.  
Approved under the Land Title Act this 22nd day of March, 2001.  
*Kristina Lipson*  
Approving Officer  
City of Prince George

This plan lies within the Fraser-Fort George Regional District.

KILBRIDE LAND SURVEYING LTD. British Columbia Land Surveyors Prince George, B.C. Ph: (250) 562-1196 Fax: 562-3656		
F.B. RA	D.L. 1605	File No. 000 2775