

EXPLANATORY PLAN OF LEASE  
 OF PARTS OF A BUILDING ON  
 LOTS 3 TO 9, BLOCK 127,  
 PLAN 1268, DISTRICT LOT 343,  
 CARIBOO DISTRICT.  
 B.C.G.S. 93G.000

PLAN NO. PGP 46525




Deposited in the Land Title Office at Prince  
 George this 28 day of FEB. , 2001.

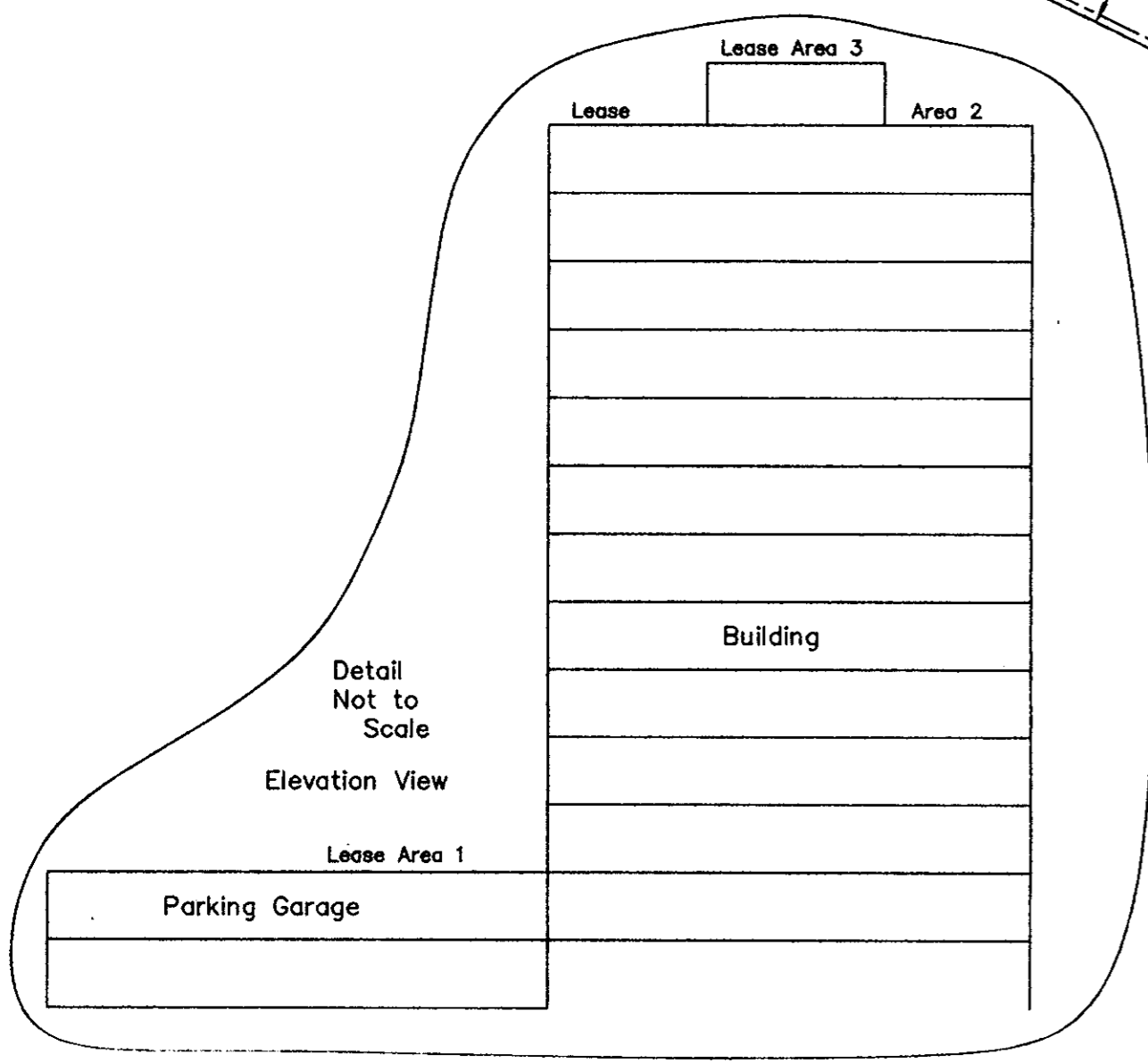
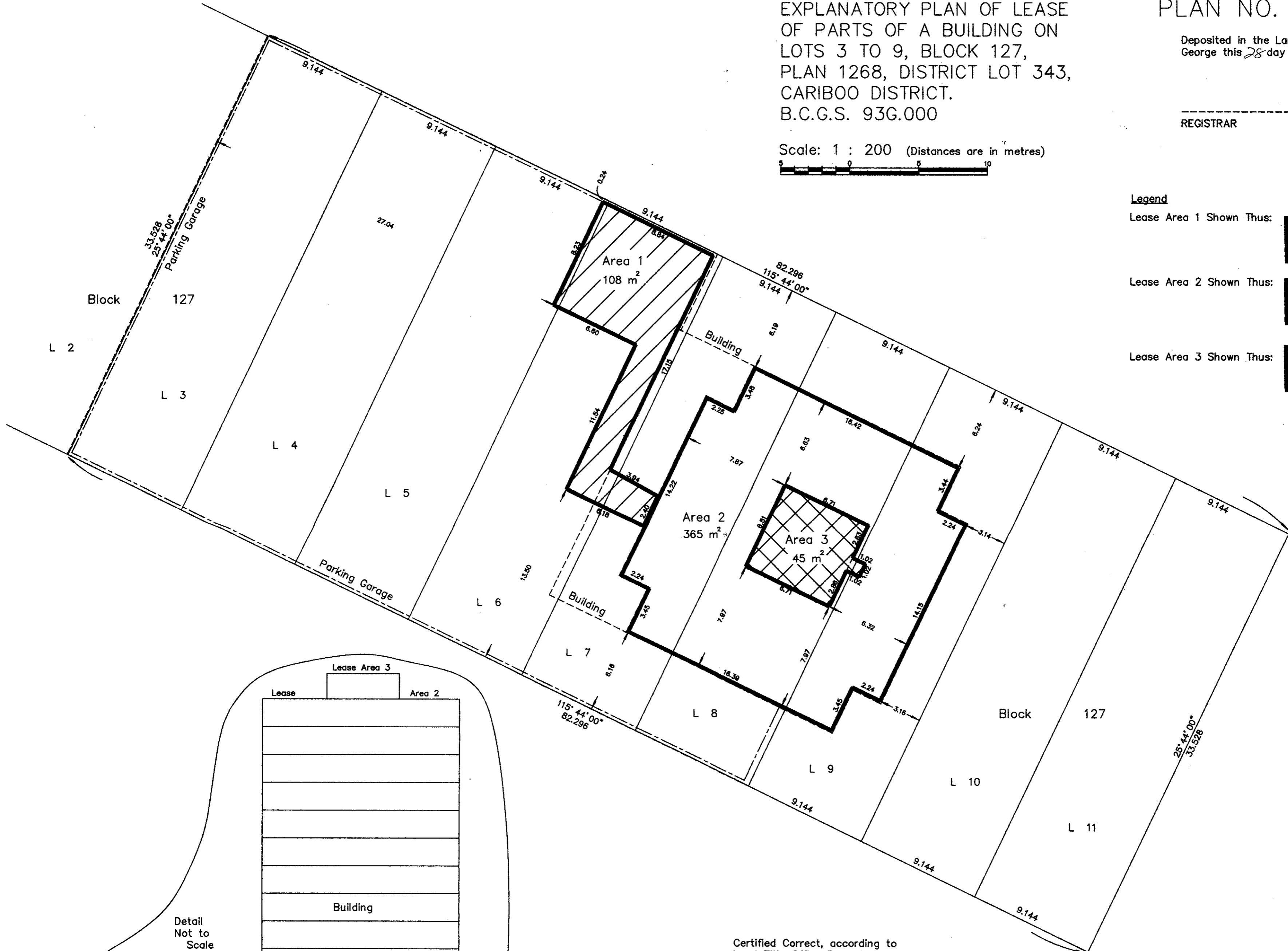
REGISTRAR

Scale: 1 : 200 (Distances are in metres)



Legend

- Lease Area 1 Shown Thus: 
- Lease Area 2 Shown Thus: 
- Lease Area 3 Shown Thus: 



Certified Correct, according to  
 Land Title Office Records.  
 This 31 day of January ,2001 .

*Gordon Kilbride*  
 Gordon Kilbride, B.C.L.S.

This plan lies within the Fraser-Fort  
 George Regional District.

<b>KILBRIDE LAND SURVEYING LTD.</b> British Columbia Land Surveyors Prince George, B.C. Ph: (250) 562-1196 Fax: 562-3656		
F.B. RA	D.L. 343(127)	File No. 000 275