

PLAN NO. PGP 46446

Deposited in the Land Title Office at Prince George this, day of Feb, 2001.

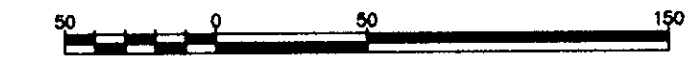
REGISTRAR *[Signature]*

REFERENCE PLAN OF EASEMENT OVER LOT 1, PLAN PGP42660, DISTRICT LOT 1531, CARIBOO DISTRICT.

Pursuant to Section 99 of the Land Title Act.

B.C.G.S. 93G.096

Scale: 1 : 2500 (Distances are in metres)



LEGEND

- Standard Iron Post Found
- Standard Iron Post Placed
- ⊙ Control Monument Found

Grid bearings are derived from observations between control monuments 86H1763 and 86H1721, integrated survey area number 39, City of Prince George, B.C. NAD83(CSRS)

Note: This plan shows ground level measured distances. Prior to computation of U.T.M. co-ordinates multiply by the combined factor 0.9995106

BOOK OF REFERENCE	
DESCRIPTION	AREA
Lot 1, Plan PGP42660,	920 m <sup>2</sup>

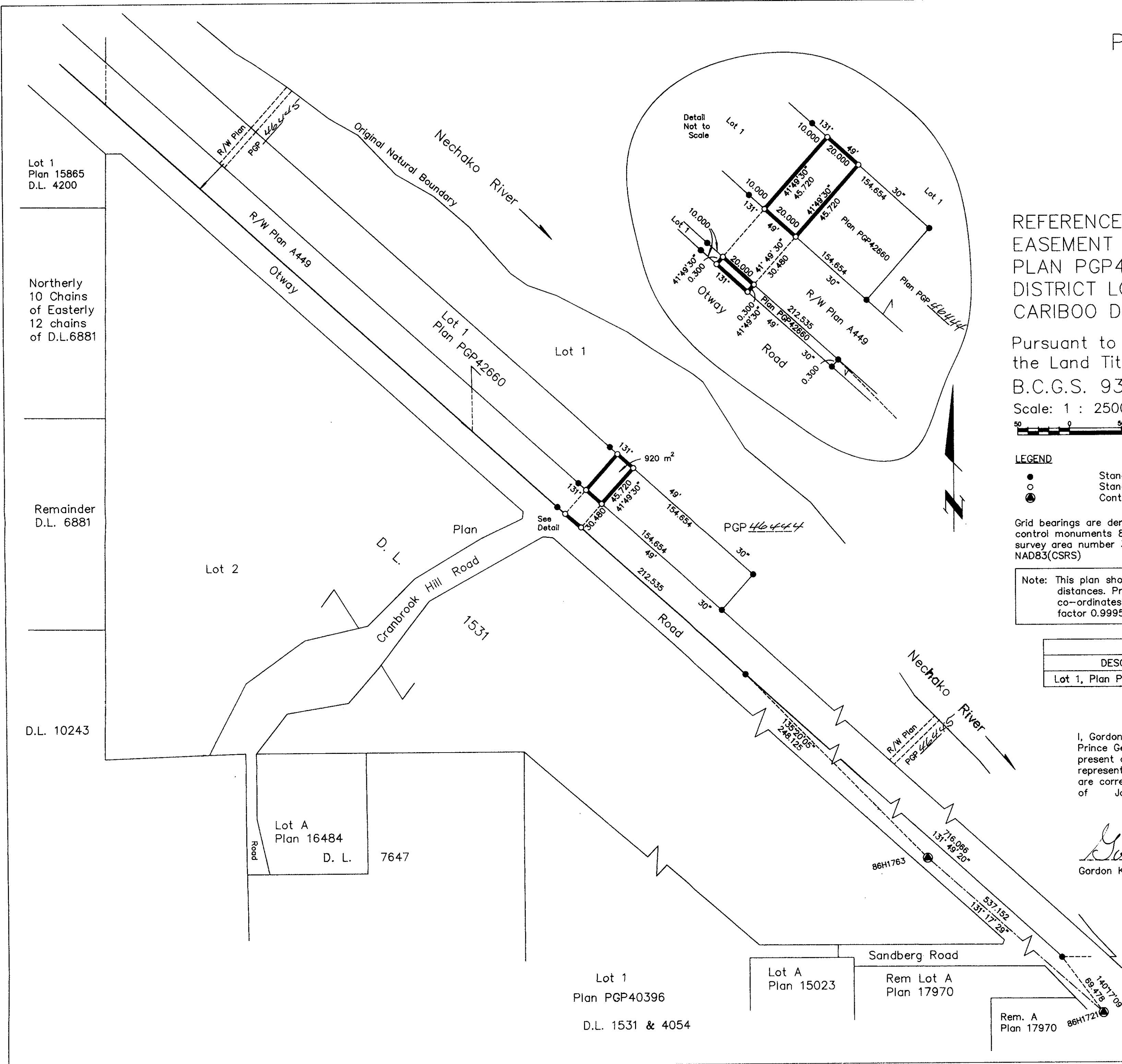
I, Gordon Kilbride, a British Columbia Land Surveyor of Prince George in British Columbia, certify that I was present at and personally superintended the survey represented by this plan and that the survey and plan are correct. The survey was completed on the 21st day of January, 2000.

*Gordon Kilbride*  
Gordon Kilbride, B.C.L.S.

This plan lies within the Fraser-Fort George Regional District.

**KILBRIDE LAND SURVEYING LTD.**  
British Columbia Land Surveyors  
Prince George, B.C.  
Ph: (250) 562-1196 Fax: 562-3656

F.B.- VY68 D.L.- 1531 File No. -990059E



Lot 1  
Plan 15865  
D.L. 4200

Northerly  
10 Chains  
of Easterly  
12 chains  
of D.L.6881

Remainder  
D.L. 6881

D.L. 10243

Lot A  
Plan 16484  
D. L. 7647

Lot 1  
Plan PGP40396  
D.L. 1531 & 4054

Lot A  
Plan 15023

Rem Lot A  
Plan 17970

Rem. A  
Plan 17970