

PLAN OF SUBDIVISION OF
 LOT 2 & PART OF LOT 1, PLAN 32450
 DISTRICT LOTS 343 AND 417
 CARIBOO DISTRICT
 B.C.G.S. 93G.097

PLAN No. PGP 46330

DEPOSITED IN THE LAND TITLE OFFICE
 AT PRINCE GEORGE, B.C., THIS 21
 DAY OF Dec 20 00

REGISTRAR *[Signature]*



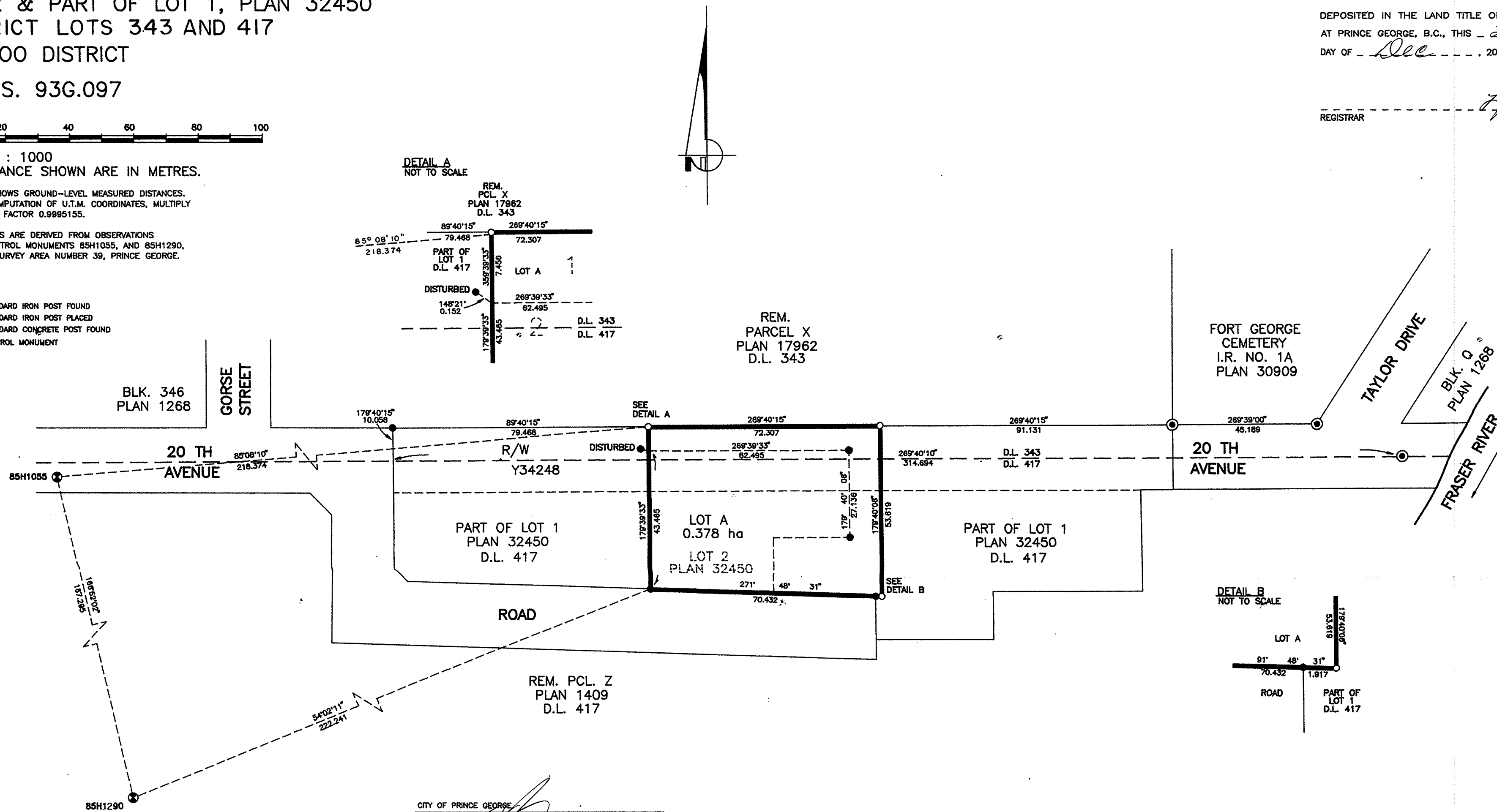
SCALE 1 : 1000
 ALL DISTANCE SHOWN ARE IN METRES.

THIS PLAN SHOWS GROUND-LEVEL MEASURED DISTANCES.
 PRIOR TO COMPUTATION OF U.T.M. COORDINATES, MULTIPLY
 BY COMBINED FACTOR 0.9995155.

GRID BEARINGS ARE DERIVED FROM OBSERVATIONS
 BETWEEN CONTROL MONUMENTS BSH1055, AND BSH1290,
 INTEGRATED SURVEY AREA NUMBER 39, PRINCE GEORGE.

LEGEND

- STANDARD IRON POST FOUND
- STANDARD IRON POST PLACED
- ⊙ STANDARD CONCRETE POST FOUND
- ⊕ CONTROL MONUMENT



CITY OF PRINCE GEORGE

MAYOR: *[Signature]*
 PRINT NAME: *[Signature]*

CLERK: *[Signature]*
 PRINT NAME: Don Schaffer

WITNESS (AS TO BOTH SIGNATURES): *[Signature]*
 PRINT NAME: JUDY DWO

ADDRESS: City Hall
 Prince George, B.C.
 OCCUPATION: Secretary

APPROVED UNDER THE LAND TITLE ACT
 THIS 18th DAY OF December, 20 00

[Signature]
 APPROVING OFFICER, CITY OF PRINCE GEORGE.

I, RONALD L. JOHNS, A BRITISH COLUMBIA LAND SURVEYOR, OF PRINCE GEORGE, IN BRITISH COLUMBIA, CERTIFY THAT I WAS PRESENT AT AND PERSONALLY SUPERINTENDED THE SURVEY REPRESENTED BY THIS PLAN AND THAT THE SURVEY AND PLAN ARE CORRECT. THE SURVEY WAS COMPLETED ON THE 17TH DAY OF MARCH, 2000.

[Signature]
 R.L. JOHNS, B.C.L.S., C.L.S.

THIS PLAN LIES WITHIN THE FRASER-FORT GEORGE REGIONAL DISTRICT.

R. L. JOHNS LAND SURVEYING LTD.
 LEGAL AND ENGINEERING SURVEYS
 240 VICTORIA STREET
 PRINCE GEORGE, B. C. V2L 2J4
 PHONE: (250)562-5759
 FAX: (250)562-5703
 2000017 19 - 15-18
 A410 - 21