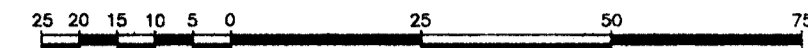


PLAN OF SUBDIVISION OF PART OF  
REMAINDER OF PARCEL P (14655M)  
OF LOT 2, PLAN 1810, DISTRICT  
LOT 931, CARIBOO DISTRICT.

B.C.G.S. 93G.097

Scale: 1 : 1000 (Distances are in metres)



LEGEND

- Standard Iron Post Found
- Standard Iron Post Placed
- ⊙ Control Monument Found

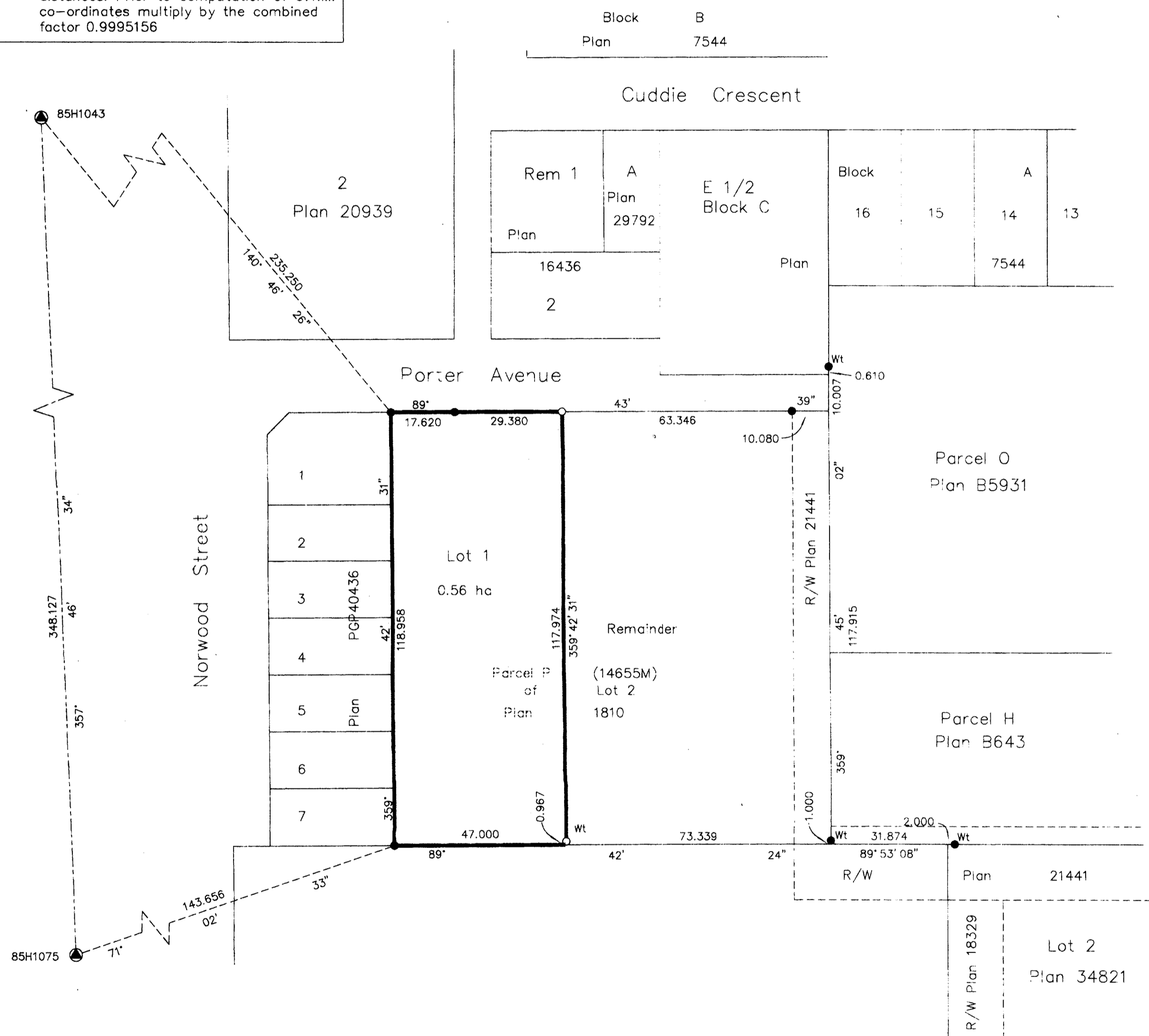
Grid bearings are derived from observations between control monuments 85H1075 and 85H1043, integrated survey area number 39, City of Prince George, B.C. NAD83(CSRS)

Note: This plan shows ground level measured distances. Prior to computation of U.T.M. co-ordinates multiply by the combined factor 0.9995156

PLAN NO. PGP 46320

Deposited in the Land Title Office at Prince George this 15 day of Dec, 2000

REGISTRAR *[Signature]*



I, Gordon Kilbride, a British Columbia Land Surveyor, of Prince George, in British Columbia, certify that I was present at and personally superintended the survey represented by this plan, and that the survey and plan are correct. The survey was completed on the 21st day of November, 2000.

*Gordon Kilbride*  
Gordon Kilbride, B.C.L.S.

Owner:  
*Valentina Goodwin*  
Valentina Goodwin  
Witness:  
*Niels S. Edelmann*  
Niels S. Edelmann  
617 RADCLIFFE DRIVE  
PRINCE GEORGE V2M 3N8  
RETIREE

The registered owners designated hereon entered into a covenant with Her Majesty the Queen in Right of the Province of British Columbia as represented by the City of Prince George under Section 219 of the Land Title Act.

Approved under the Land Title Act this 15<sup>th</sup> day of December, 2000  
*[Signature]*  
Approving Officer  
City of Prince George

This plan lies within the Fraser-Fort George Regional District.

KILBRIDE LAND SURVEYING LTD.  
British Columbia Land Surveyors  
Prince George, B.C.  
Ph: (250) 562-1196 Fax: 562-3656

F.B. WP57 D.L. 931 File No. 000 199S