

PLAN OF SUBDIVISION OF
 LOT 1, PLAN 29628 AND
 PART OF REMAINDER LOT 26,
 PLAN 7787, DISTRICT
 LOT 913, CARIBOO DISTRICT.
 B.C.G.S. 93G.087

PLAN NO. PGP 46312

Deposited in the Land Title Office at Prince
 George this 14 day of Dec., 2000.

REGISTRAR

LK

Scale: 1 : 750 (Distances are in metres)

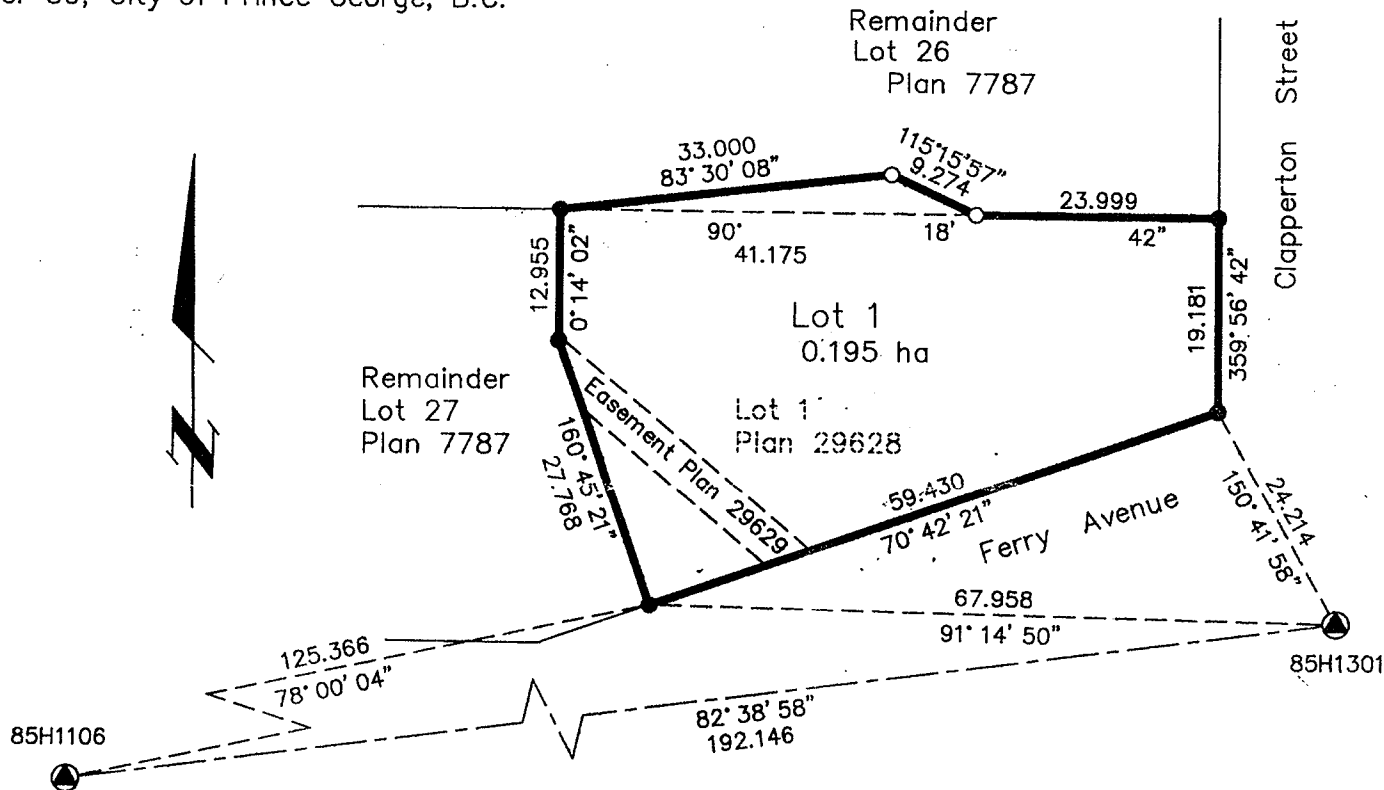


LEGEND

- Standard Iron Post Found
- Standard Iron Post Placed
- ▲ Control Monument Found

Note: This plan shows ground level measured
 distances. Prior to computation of U.T.M.
 co-ordinates multiply by the combined
 factor 0.9995133

Grid bearings are derived from observations between
 control monuments 85H1301 and 85H1106, integrated
 survey area number 39, City of Prince George, B.C.
 NAD83(CSRS)



Owner: Prince George Hospice Society
 Inc. Number 522234

Authorized Signatory

Print Name

Authorized Signatory

Print Name

Witness to both

Print Name

Address

Occupation

I, Gordon Kilbride, a British Columbia Land Surveyor, of
 Prince George, in British Columbia, certify that I was
 present at and personally superintended the survey
 represented by this plan, and that the survey and plan
 are correct. The survey was completed on the 22nd day
 of November, 2000.

Gordon Kilbride, B.C.L.S.

Approved under the Land Title Act this 8th day of
December, 2000

Approving Officer
 City of Prince George

Owner: Prince George Savings Credit Union

Authorized Signatory

Print Name

Authorized Signatory

Print Name

Witness to both

Print Name

Address

Occupation

This plan lies within the Fraser-Fort
 George Regional District.

KILBRIDE LAND SURVEYING LTD.
 British Columbia Land Surveyors
 Prince George, B.C.
 Ph: (250) 562-1196 Fax: 562-3656

F.B. WS11 D.L. 913 File No. 000 272