

Deposited in the Land Title Office at Prince George this 12 day of Dec. 2000.

REGISTRAR

REFERENCE PLAN OF STATUTORY RIGHT OF WAY WITHIN DISTRICT LOT 820, CARIBOO DISTRICT.

Pursuant to Section 113 of the Land Title Act. B.C.G.S. 93G.097

Scale: 1 : 2000 (Distances are in metres)

Bearings are astronomic, derived from Plan 34391.

Bearing Tree Bearings Are Magnetic.

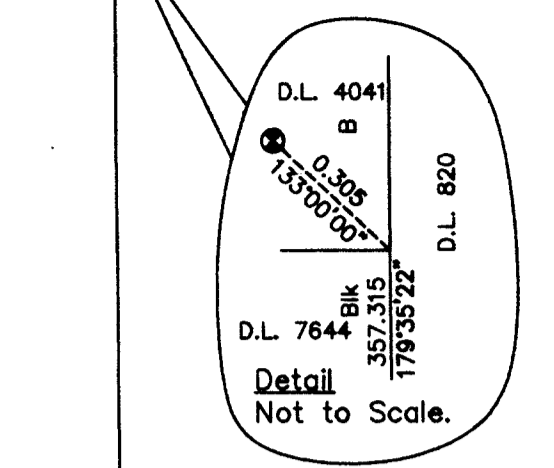
LEGEND

- Standard Capped Post Found
- ⊙ Standard Capped Post Placed
- Standard Iron Post Found
- Standard Iron Post Placed

Posting impracticable due to extremely steep unstable slope

Total Area within Heavy Outline = 1.59 ha

Found BTs	Mkd.	Mead.
0.31 Pine 288°	XVIII	3.31
0.23 Birch 58°	XI	2.22
0.23 Spruce 197°	3.4	1.01
0.13 Balsam 149°	6.86	6.86

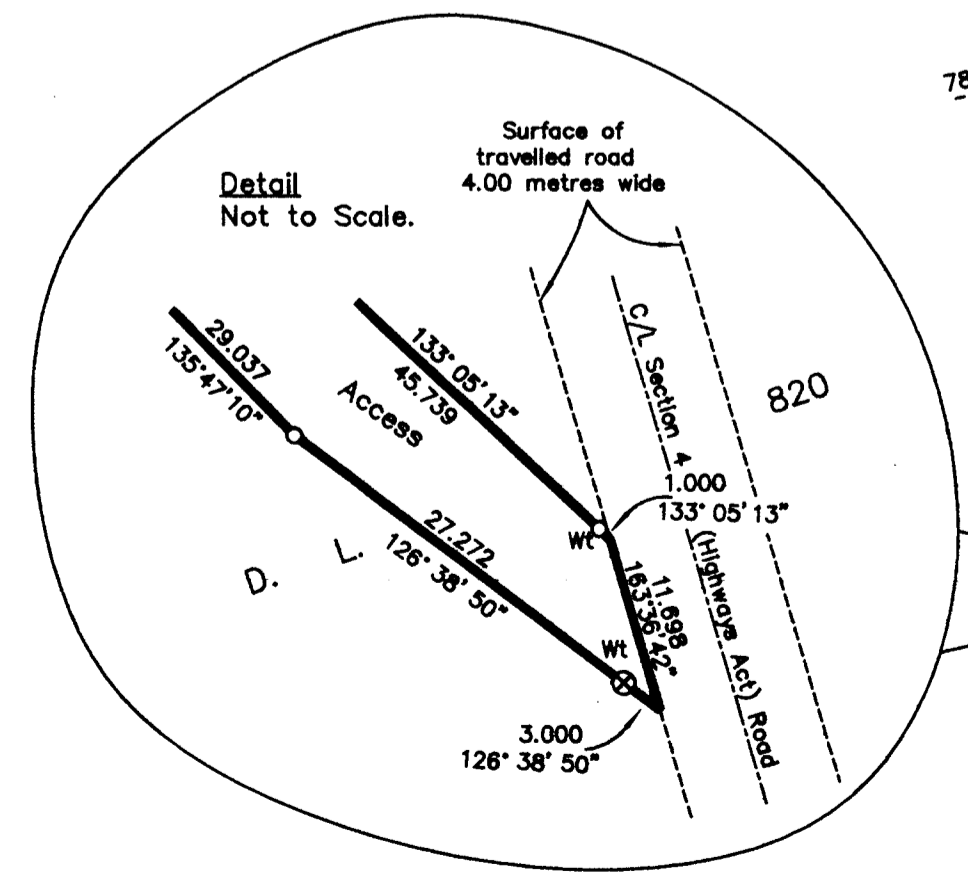
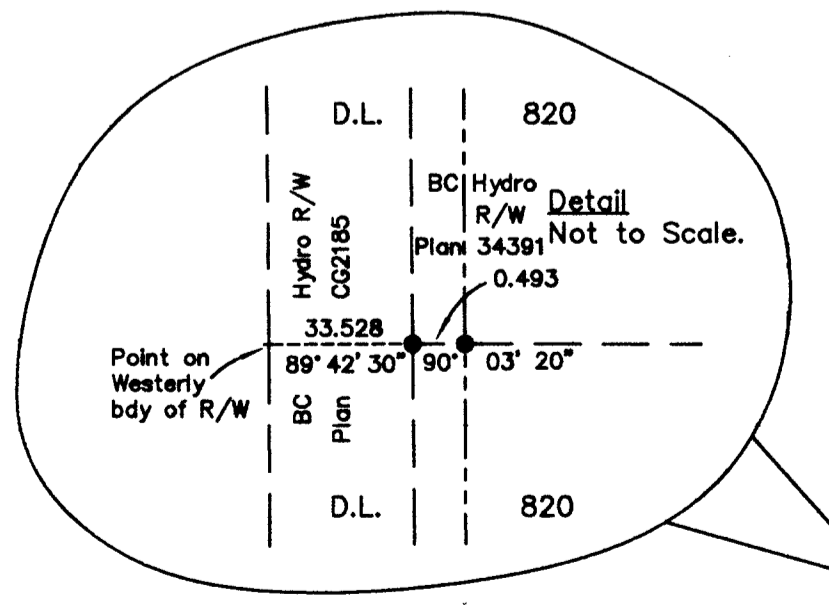


Found BTs	Mkd.	Mead.
0.13 Spruce 173°	5.59	5.59
0.12 Spruce 257°	5.44	5.44

I, Dale L. Keown, a British Columbia Land Surveyor, of Prince George, in British Columbia, certify that I was present at and personally superintended the survey represented by this plan, and that the survey and plan are correct. The survey was completed on the 18th day of August, 2000.

Dale Keown
Dale L. Keown, B.C.L.S.

BOOK OF REFERENCE			
	DESCRIPTION	AREA	
Area 1	D.L. 820, Cariboo District Waterline & Well site	1.16 ha	
Area 2	D.L. 820, Cariboo District Access	0.425 ha	
	Total	1.59 ha	



This plan lies within the Fraser-Fort George Regional District.

KILBRIDE LAND SURVEYING LTD.
British Columbia Land Surveyors
Prince George, B.C.
Ph: (250) 562-1196 Fax: 562-3656

F.11- RA D.L.- 820 File No. -000182

I hereby certify that this is the Official Plan of the right of way shown outlined hereon.

Original signed by
CHUCK SALMON

Surveyor General
Victoria, B.C., December 2, 2000.