

REFERENCE PLAN TO ACCOMPANY
 CITY OF PRINCE GEORGE BYLAW NO. 1200 CLOSING PART OF
 CLUFF ROAD, PLAN 20461, DISTRICT LOT 4028
 AND ESTABLISHING AS ROAD PART OF LOT A, PLAN 20461
 DISTRICT LOT 4028
 CARIBOO DISTRICT

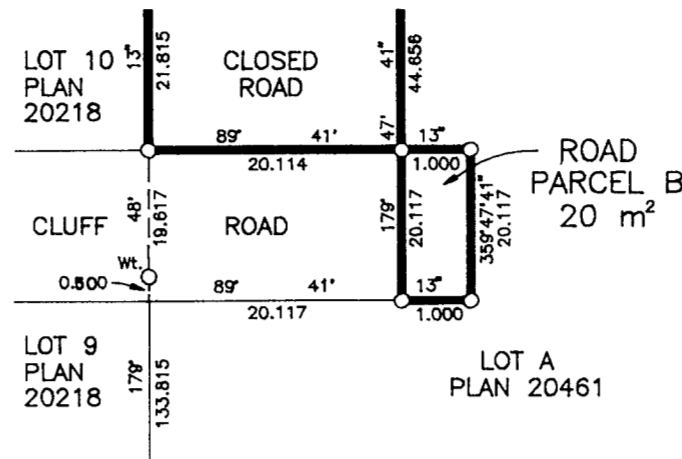
PLAN No. PGP 46300

DEPOSITED IN THE LAND TITLE OFFICE
 AT PRINCE GEORGE, B.C., THIS 18
 DAY OF DECEMBER, 20 00

B.C.G.S 93J.007

PURSUANT TO SECTION 525 LOCAL GOVERNMENT ACT.
 OF THE MUNICIPAL ACT.

DETAIL
 NO SCALE



REGISTRAR



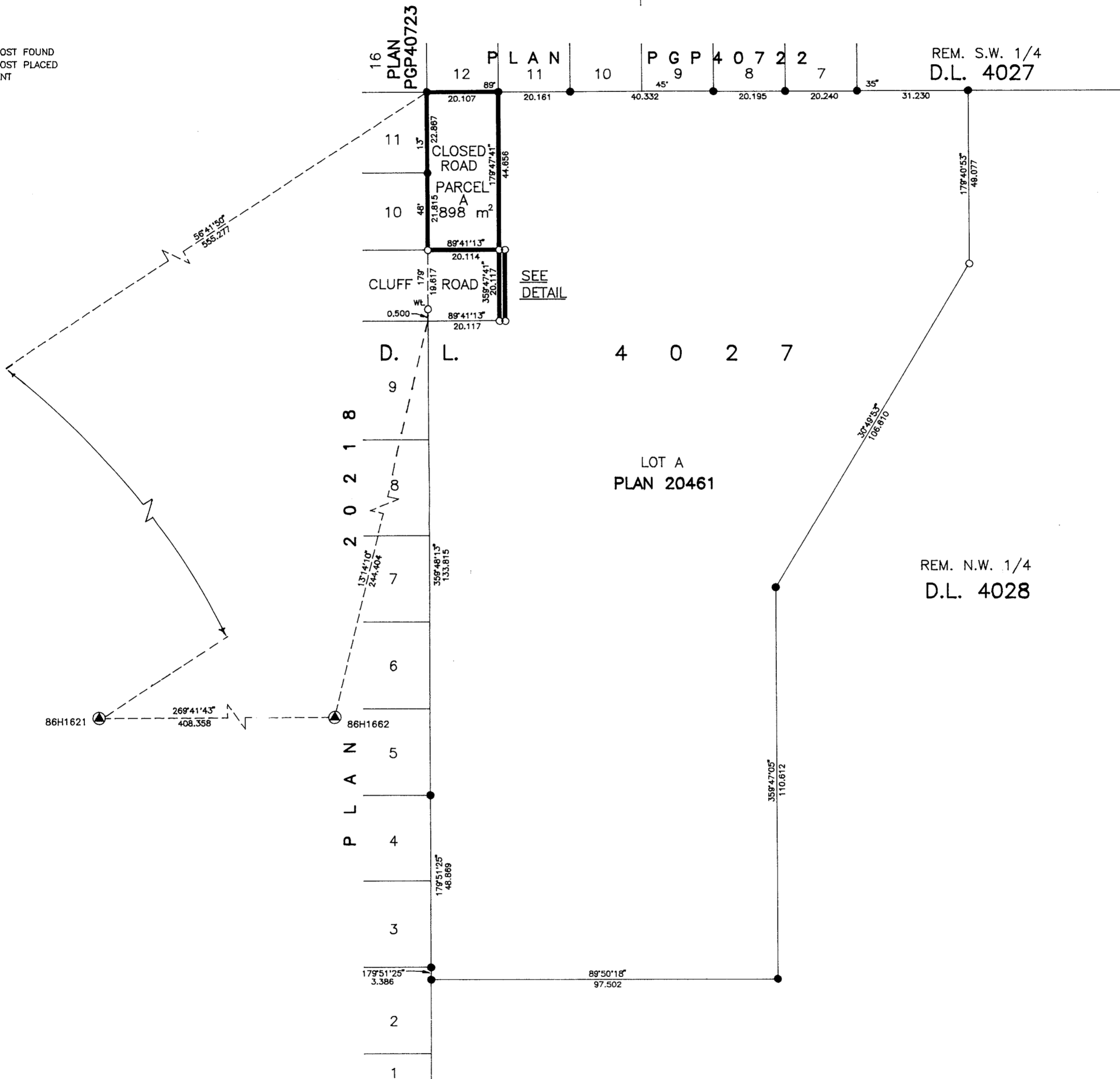
SCALE: 1 : 1000
 ALL DISTANCES SHOWN ARE IN METRES.

THIS PLAN SHOWS GROUND-LEVEL MEASURED DISTANCES.
 PRIOR TO COMPUTATION OF U.T.M. COORDINATES, MULTIPLY
 BY COMBINED FACTOR 0.9994900.

GRID BEARINGS ARE DERIVED FROM OBSERVATIONS
 BETWEEN CONTROL MONUMENTS 86H1662, AND 86H1621,
 INTEGRATED SURVEY AREA NUMBER 39, PRINCE GEORGE.

LEGEND

- STANDARD IRON POST FOUND
- STANDARD IRON POST PLACED
- ⊙ CONTROL MONUMENT



I, RONALD L. JOHNS, A BRITISH COLUMBIA LAND
 SURVEYOR, OF PRINCE GEORGE, IN BRITISH COLUMBIA,
 CERTIFY THAT I WAS PRESENT AT AND PERSONALLY
 SUPERINTENDED THE SURVEY REPRESENTED BY THIS
 PLAN AND THAT THE SURVEY AND PLAN ARE CORRECT.
 THE SURVEY WAS COMPLETED ON THE 28TH DAY OF
 JULY, 2000.

APPROVED UNDER THE LAND TITLE ACT
 THIS 30th DAY OF October, 20 00

THIS PLAN LIES WITHIN THE FRASER-
 FORT GEORGE REGIONAL DISTRICT.

R.L. Johns
 R.L. JOHNS, B.C.L.S., C.L.S.

Kes Hil
 APPROVING OFFICER, CITY OF PRINCE GEORGE.

R. L. JOHNS LAND SURVEYING LTD.
 LEGAL AND ENGINEERING SURVEYS
 240 VICTORIA STREET
 PRINCE GEORGE, B. C. V2L 2J4
 PHONE: (250)562-5759
 FAX: (250)562-5703

2000010 X6 - 19-21