

EXPLANATORY PLAN OF

LOTS 13 TO 18 INCLUSIVE & LOTS 25 TO 36 INCLUSIVE, BLOCK 23,  
LOTS 1 TO 18 INCLUSIVE, BLOCK 25  
LOTS 1 TO 36 INCLUSIVE, BLOCK 26  
LOTS 1 TO 18 INCLUSIVE, BLOCK 27,  
LOTS 1 TO 34 INCLUSIVE, BLOCK 28,  
AND ADJACENT ROAD

PLAN 867  
DISTRICT LOT 925  
CARIBOO DISTRICT

PLAN No. PGP H6283

DEPOSITED IN THE LAND TITLE OFFICE  
AT PRINCE GEORGE, B.C., THIS 05  
DAY OF DEC, 192000

REGISTRAR

B.C.G.S. 93G.087

PURSUANT TO SECTION 136 OF THE LAND TITLE ACT

BEARINGS ARE ASTRONOMIC, DERIVED FROM PLAN 867.



SCALE = 1 : 1000

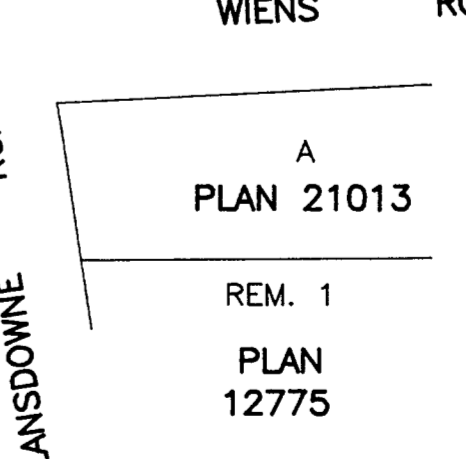
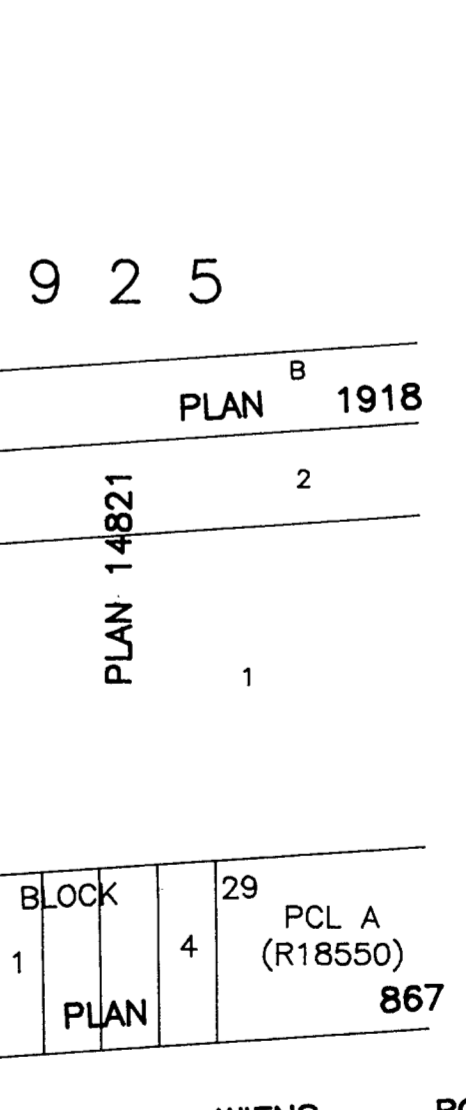
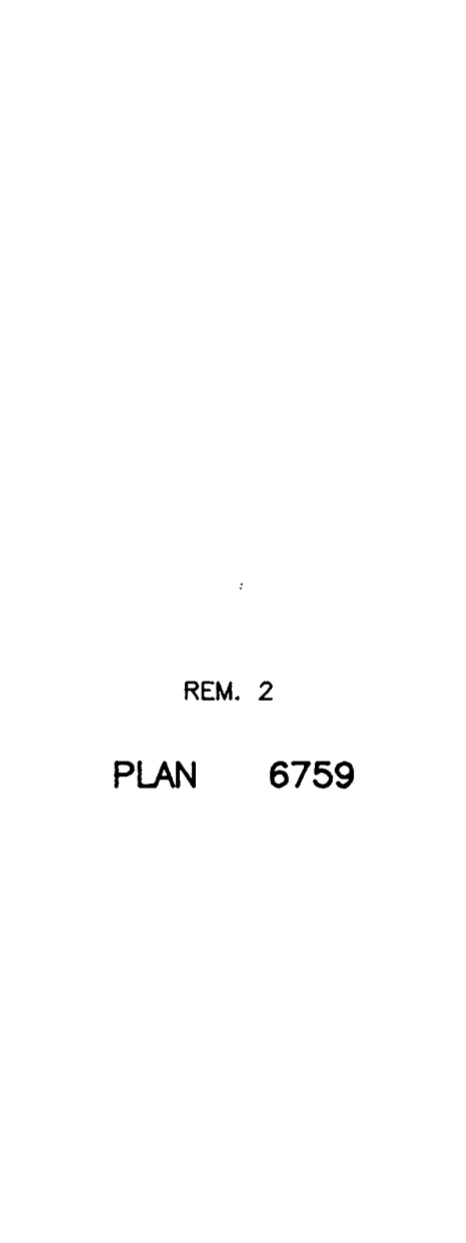
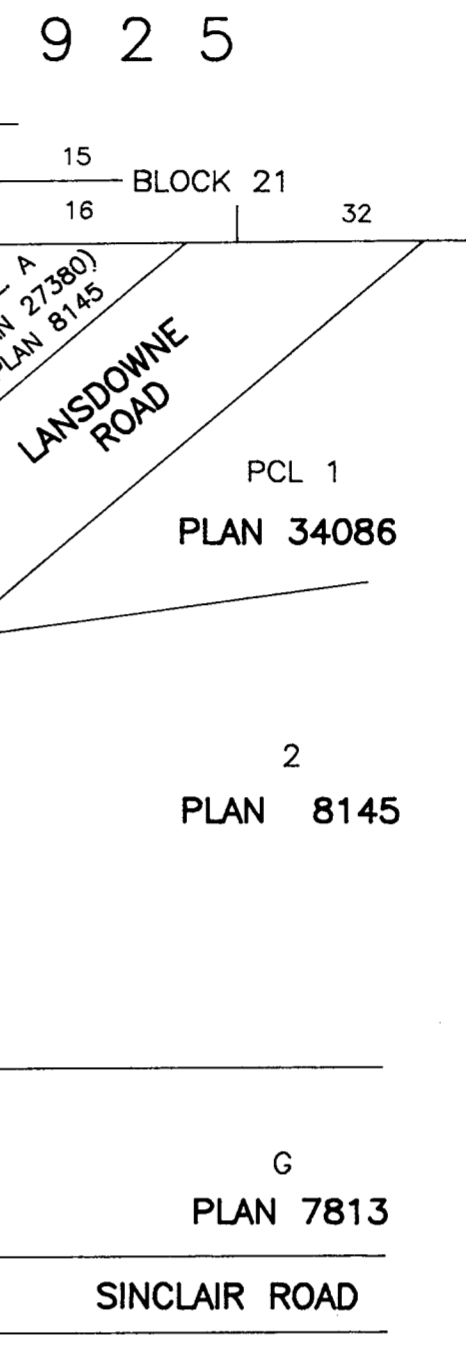
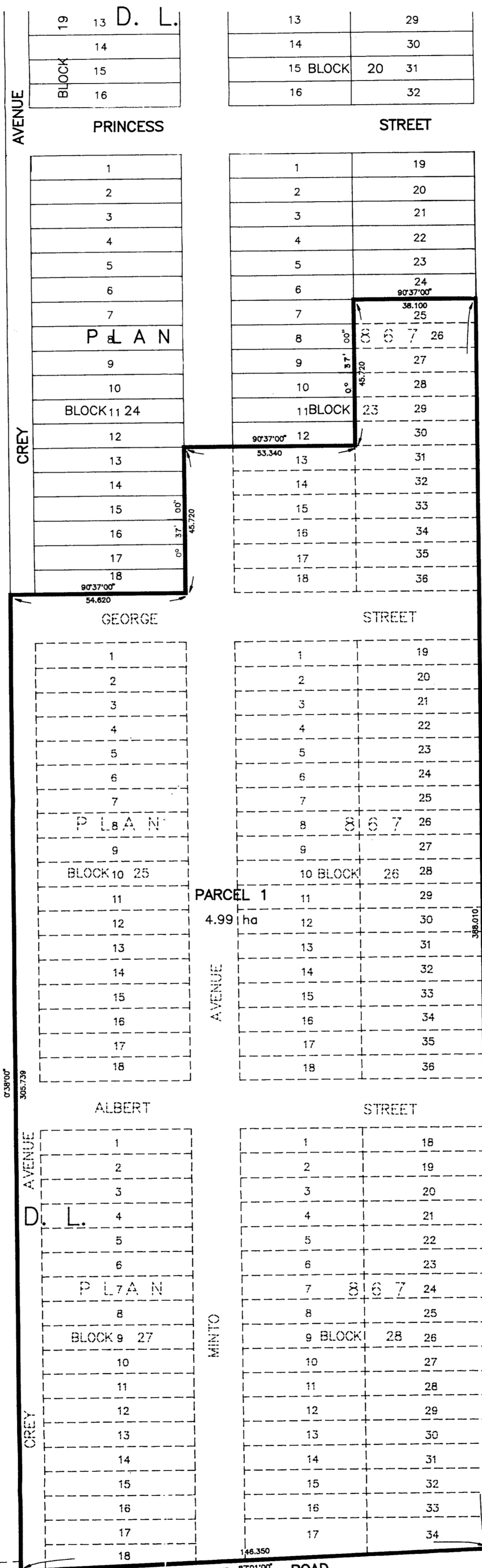
ALL DISTANCES ARE SHOWN IN METRES.



YELLOWHEAD HWY. NO. 16 WEST

R/W PLANS H-735 & 22207

REM. BLOCK A  
D.L. 1432



REM. 1  
PLAN  
8749

PLAN  
9022  
D. L. 7 5 3

CERTIFIED CORRECT  
ACCORDING TO LAND TITLE OFFICE RECORDS  
THIS 1ST DAY OF OCTOBER, 1999.

R. L. Johns, B.C.L.S., C.L.S.

R. L. JOHNS LAND SURVEYING LTD.  
LEGAL AND ENGINEERING SURVEYS  
240 VICTORIA STREET  
PRINCE GEORGE, B. C. V2L 2J4  
PHONE: (250)562-3759  
FAX: (250)562-5703

97-148-1

THIS PLAN LIES WITHIN THE FRASER-FORT GEORGE REGIONAL DISTRICT.

I HEREBY CERTIFY THAT THIS IS THE OFFICIAL PLAN OF THE LANDS SHOWN OUTLINED HEREON.

Original signed by  
CHUCK SALMON  
SURVEYOR GENERAL  
VICTORIA, B.C., November 28, 2000