

PLAN OF STATUTORY RIGHT-OF-WAY
THROUGH PART OF REM.
LOT 49, PLAN 17833
DISTRICT LOT 745
CARIBOO DISTRICT

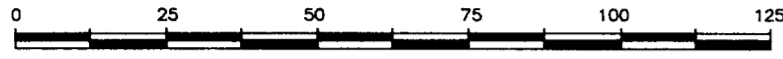
B.C.G.S. 93G.087

PURSUANT TO SECTION 113 OF THE LAND TITLE ACT.

PLAN No. PGP 46266

DEPOSITED IN THE LAND TITLE OFFICE
AT PRINCE GEORGE, B.C., THIS 30
DAY OF NOV, 2000.

REGISTRAR *[Signature]*



SCALE = 1 : 1250
ALL DISTANCES ARE SHOWN IN METRES.

THIS PLAN SHOWS GROUND-LEVEL MEASURED DISTANCES.
PRIOR TO COMPUTATION OF U.T.M. COORDINATES, MULTIPLY
BY COMBINED FACTOR 0.99951275.

GRID BEARINGS ARE DERIVED FROM OBSERVATIONS
BETWEEN CONTROL MONUMENTS 86H1723, AND 86H1740,
INTEGRATED SURVEY AREA NUMBER 39, PRINCE GEORGE.

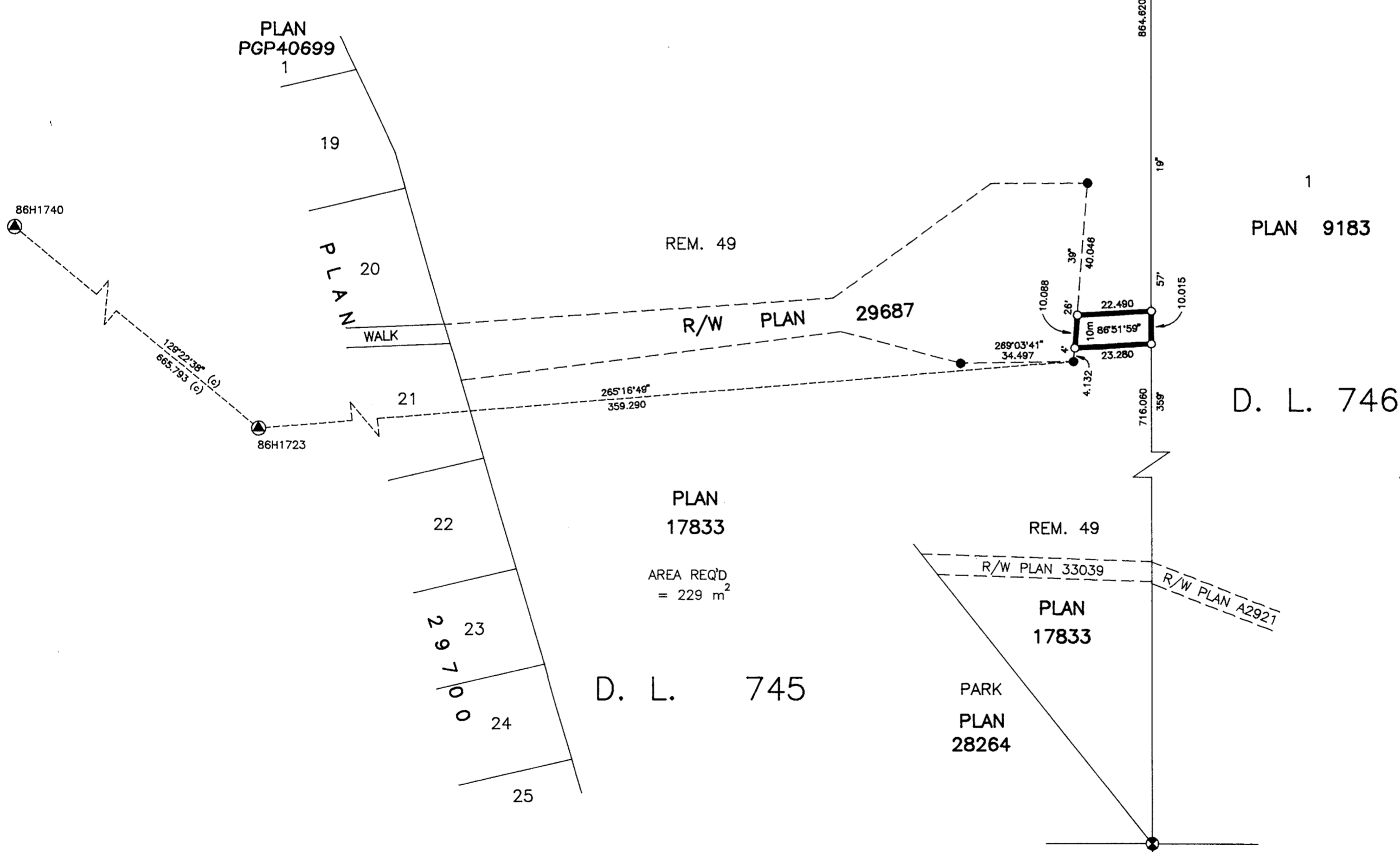
LEGEND

- STANDARD IRON POST FOUND
- STANDARD IRON POST PLACED
- ⊙ STANDARD CAPPED POST FOUND
- ▲ CONTROL MONUMENT



REM. D. L. 487

D. L. 745



I, RONALD L. JOHNS, A BRITISH COLUMBIA LAND SURVEYOR, OF PRINCE GEORGE, IN BRITISH COLUMBIA, CERTIFY THAT I WAS PRESENT AT AND PERSONALLY SUPERINTENDED THE SURVEY REPRESENTED BY THIS PLAN AND THAT THE SURVEY AND PLAN ARE CORRECT. THE SURVEY WAS COMPLETED ON THE 5TH DAY OF JANUARY, 2000.

[Signature]
R.L. JOHNS, B.C.L.S., C.L.S.

THIS PLAN LIES WITHIN THE FRASER-FORT GEORGE REGIONAL DISTRICT.

R. L. JOHNS LAND SURVEYING LTD.
LEGAL AND ENGINEERING SURVEYS
240 VICTORIA STREET
PRINCE GEORGE, B. C. V2L 2J4
PHONE: (250)562-5759
FAX: (250)562-5703
99162 BB7-8-10