

PLAN OF SUBDIVISION OF
 LOTS 16, 17 & 18, BLOCK 101,
 PLAN 752, DISTRICT LOT 937,
 CARIBOO DISTRICT.

B.C.G.S. 93G.097

Scale: 1 : 750 (Distances are in metres)



Grid bearings are derived from observations between control monuments 85H1129 and 85H1120, integrated survey area number 39, City of Prince George, B.C. NAD83(CSRS)

Note: This plan shows ground level measured distances. Prior to computation of U.T.M. co-ordinates multiply by the combined factor 0.999510

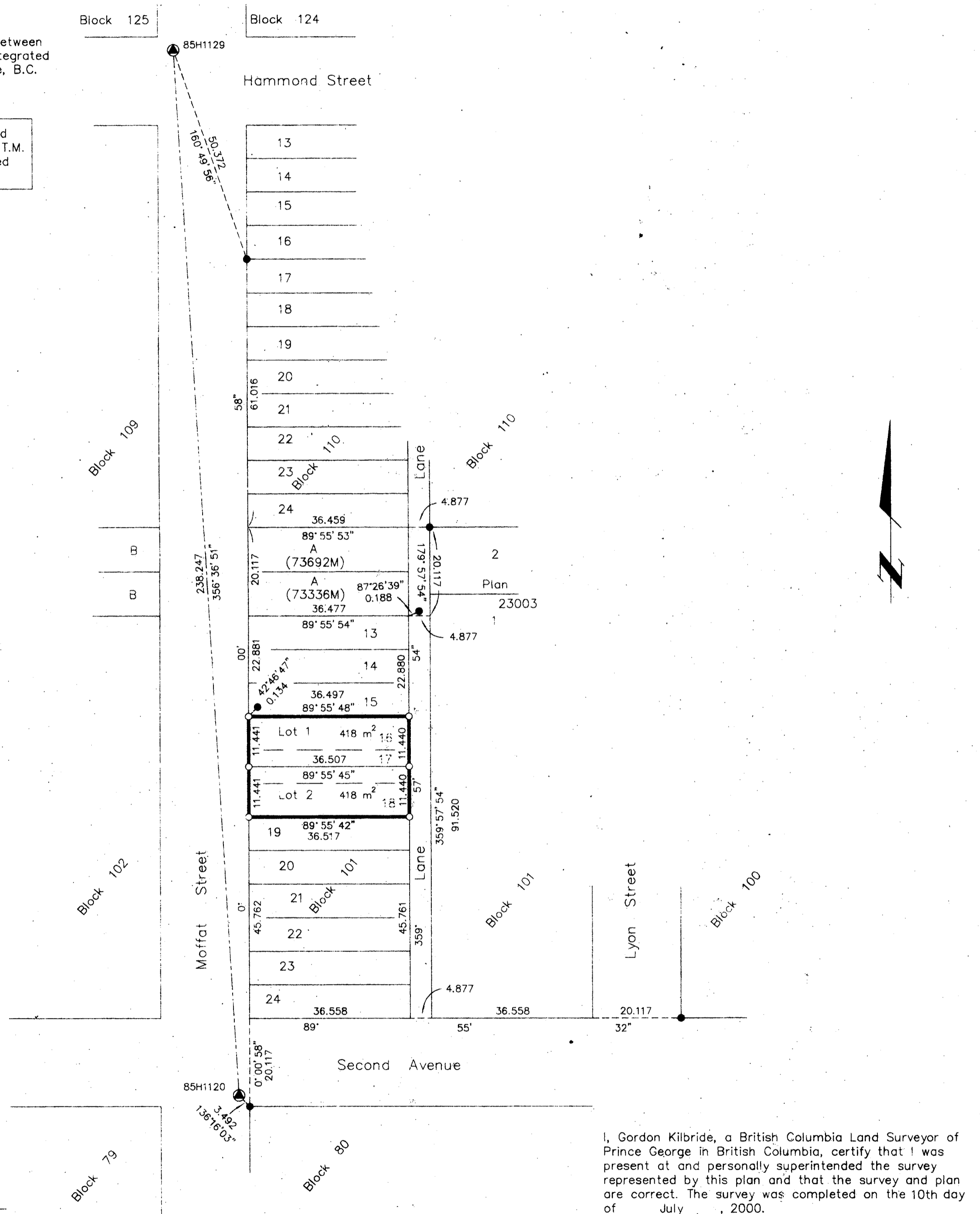
LEGEND

- Standard Iron Post Found
- Standard Iron Post Placed
- ▲ Control Monument Found

PLAN NO. PGP 45977

Deposited in the Land Title Office at Prince George, this 03 day of Oct, 2000

REGISTRAR



Owner:
 Arthur Lorne James Newcombe
 Gwen Janice Newcombe
 Witness to both
 Mike Fraser
 2060 Craft Rd.
 Prince George B.C. V2K 3G9
 Carpenter

Approved under the Land Title Act this 16th day of September 2000
 Approving Officer: [Signature]
 City of Prince George

I, Gordon Kilbride, a British Columbia Land Surveyor of Prince George in British Columbia, certify that I was present at and personally superintended the survey represented by this plan and that the survey and plan are correct. The survey was completed on the 10th day of July, 2000.

[Signature]
 Gordon Kilbride, B.C.L.S.

This plan lies within the Fraser-Fort George Regional District:

KILBRIDE LAND SURVEYING LTD.
 British Columbia Land Surveyors
 Prince George, B.C.
 Ph: (250) 562-1196 Fax: 562-3656
 F.B.- WT02 D.L.- 937 File No. - 000 008