

PLAN OF SUBDIVISION OF
LOT A, PLAN PGP44889
DISTRICT LOT 4047
CARIBOO DISTRICT

PLAN No. PGP 45722

DEPOSITED IN THE LAND TITLE OFFICE
AT PRINCE GEORGE, B.C., THIS 24
DAY OF July, 2000

B.C.G.S 93G.097



SCALE: 1 : 500
ALL DISTANCES SHOWN ARE IN METRES.



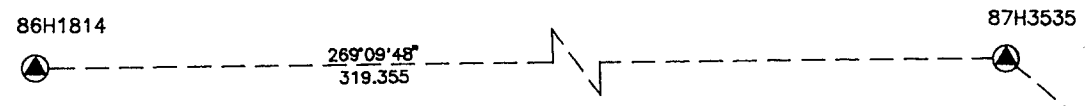
THIS PLAN SHOWS GROUND-LEVEL MEASURED DISTANCES.
PRIOR TO COMPUTATION OF U.T.M. COORDINATES, MULTIPLY
BY COMBINED FACTOR 0.9994897.

GRID BEARINGS ARE DERIVED FROM OBSERVATIONS
BETWEEN CONTROL MONUMENTS 87H3535, AND 86H1814,
INTEGRATED SURVEY AREA NUMBER 39, PRINCE GEORGE.

LEGEND

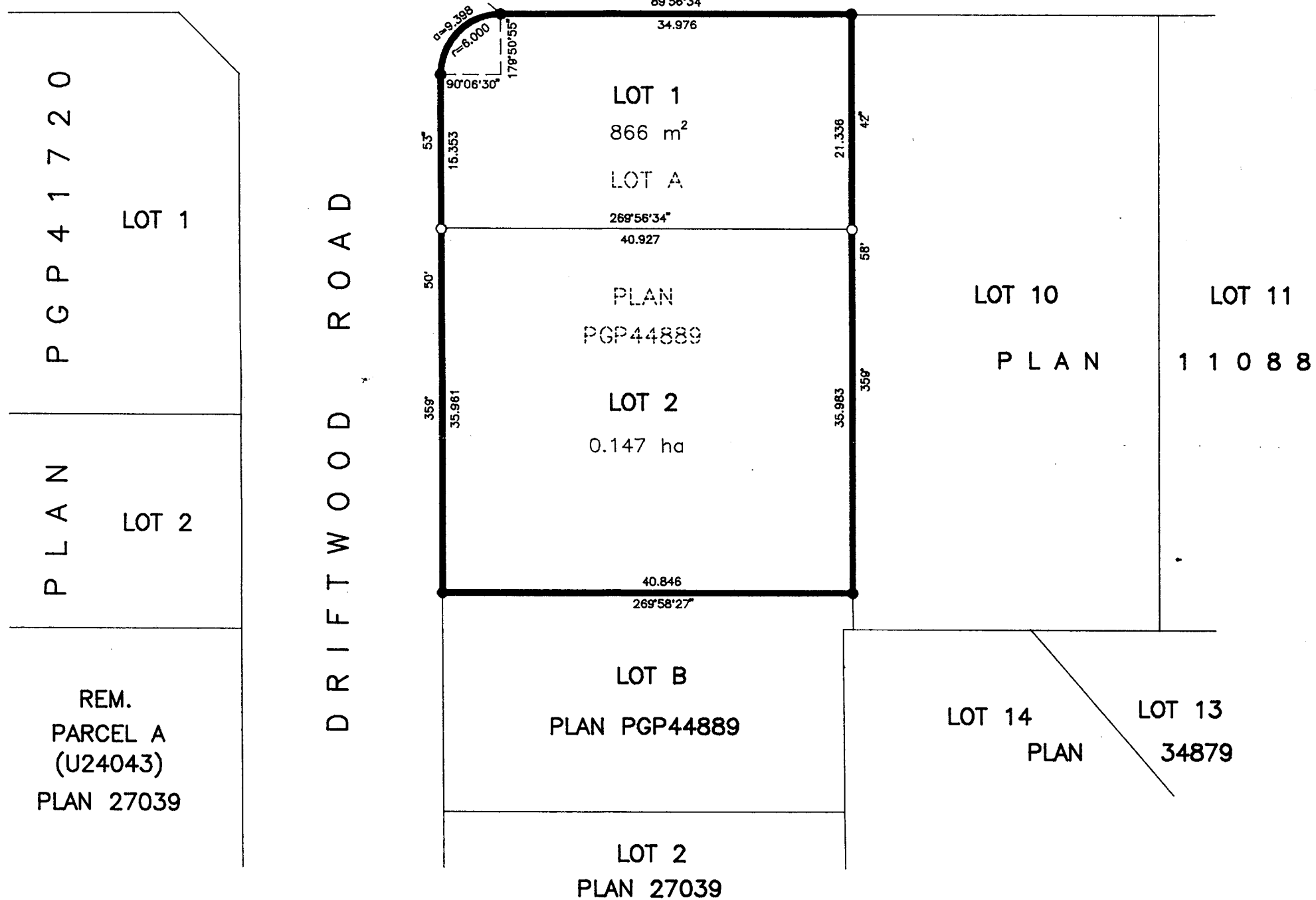
- STANDARD IRON POST FOUND
- STANDARD IRON POST PLACED
- ⊙ CONTROL MONUMENT

REGISTRAR Lk



EAST AUSTIN ROAD

D R I F T W O O D R O A D



REM.
PARCEL A
(U24043)
PLAN 27039

Rodger Hamel
OWNER - RODGER MARCEL HAMEL

Donna Mae Hamel
OWNER - DONNA MAE HAMEL

Doug Clemson
WITNESS (AS TO BOTH SIGNATURES)

Douglas Clemson
PRINT NAME

6282 Dawson Rd.
ADDRESS

Prince George, B.C. V2K5B4

Machwist
OCCUPATION

APPROVED UNDER THE LAND TITLE ACT
THIS 19th DAY OF July, 2000

Kristi Lipman
APPROVING OFFICER, CITY OF PRINCE GEORGE.

I, RONALD L. JOHNS, A BRITISH COLUMBIA LAND SURVEYOR, OF PRINCE GEORGE, IN BRITISH COLUMBIA, CERTIFY THAT I WAS PRESENT AT AND PERSONALLY SUPERINTENDED THE SURVEY REPRESENTED BY THIS PLAN AND THAT THE SURVEY AND PLAN ARE CORRECT. THE SURVEY WAS COMPLETED ON THE 17th DAY OF AUGUST, 1999.

R.L. JOHNS, B.C.L.S., C.L.S.

THIS PLAN LIES WITHIN THE FRASER-FORT GEORGE REGIONAL DISTRICT.

R. L. JOHNS LAND SURVEYING LTD.
LEGAL AND ENGINEERING SURVEYS
240 VICTORIA STREET
PRINCE GEORGE, B. C. V2L 2J4
PHONE: (250)562-5759
FAX: (250)562-5703