

REFERENCE PLAN OF CONSOLIDATION OF
 PARCEL A(51657M), PLAN 701
 DISTRICT LOT 934 AND
 PARCEL A(51658M), PLAN 727
 DISTRICT LOT 933
 CARIBOO DISTRICT

PLAN No. PGP 45386

DEPOSITED IN THE LAND TITLE OFFICE
 AT PRINCE GEORGE, B.C., THIS 20
 DAY OF April, 2000

B.C.G.S. 93G.087

PURSUANT TO SECTION 100(1)(B) OF THE LAND TITLE ACT.

REGISTRAR UK



SCALE = 1 : 1250

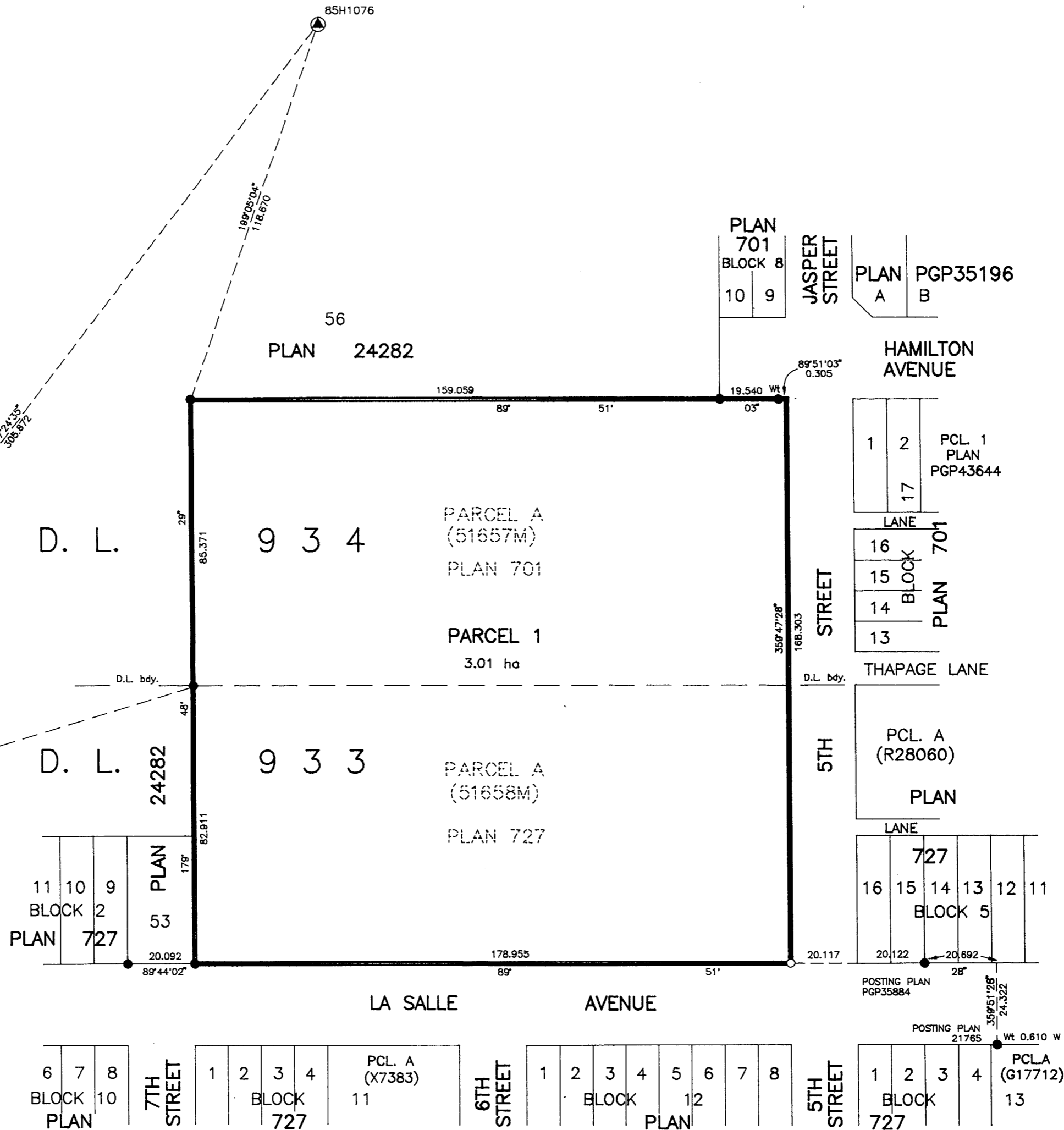
ALL DISTANCES ARE SHOWN IN METRES.

THIS PLAN SHOWS GROUND-LEVEL MEASURED DISTANCES.
 PRIOR TO COMPUTATION OF U.T.M. COORDINATES, MULTIPLY
 BY COMBINED FACTOR 0.9995140.

GRID BEARINGS ARE DERIVED FROM OBSERVATIONS
 BETWEEN CONTROL MONUMENTS 85H1076, AND 85H1080,
 INTEGRATED SURVEY AREA NUMBER 39, PRINCE GEORGE.

LEGEND

- STANDARD IRON POST FOUND
- STANDARD IRON POST PLACED
- ▲ CONTROL MONUMENT



THE BOARD OF SCHOOL TRUSTEES OF SCHOOL DISTRICT NO. 57
 (PRINCE GEORGE) PRINCE GEORGE B.C.

AUTHORIZED SIGNATORY _____

PRINT NAME _____

AUTHORIZED SIGNATORY _____

PRINT NAME _____

WITNESS (AS TO BOTH SIGNATURES) _____

PRINT NAME _____

ADDRESS _____

OCCUPATION _____

THIS PLAN LIES WITHIN THE FRASER-FORT GEORGE REGIONAL DISTRICT.

I, RONALD L. JOHNS, A BRITISH COLUMBIA LAND SURVEYOR, OF PRINCE GEORGE, IN BRITISH COLUMBIA, CERTIFY THAT I WAS PRESENT AT AND PERSONALLY SUPERINTENDED THE SURVEY REPRESENTED BY THIS PLAN AND THAT THE SURVEY AND PLAN ARE CORRECT. THE SURVEY WAS COMPLETED ON THE 12TH DAY OF APRIL, 2000.

R.L. Johns
 R.L. JOHNS, B.C.L.S., C.L.S.

R. L. JOHNS LAND SURVEYING LTD.
 LEGAL AND ENGINEERING SURVEYS
 240 VICTORIA STREET
 PRINCE GEORGE, B. C. V2L 2J4
 PHONE: (250)562-5759
 FAX: (250)562-5703