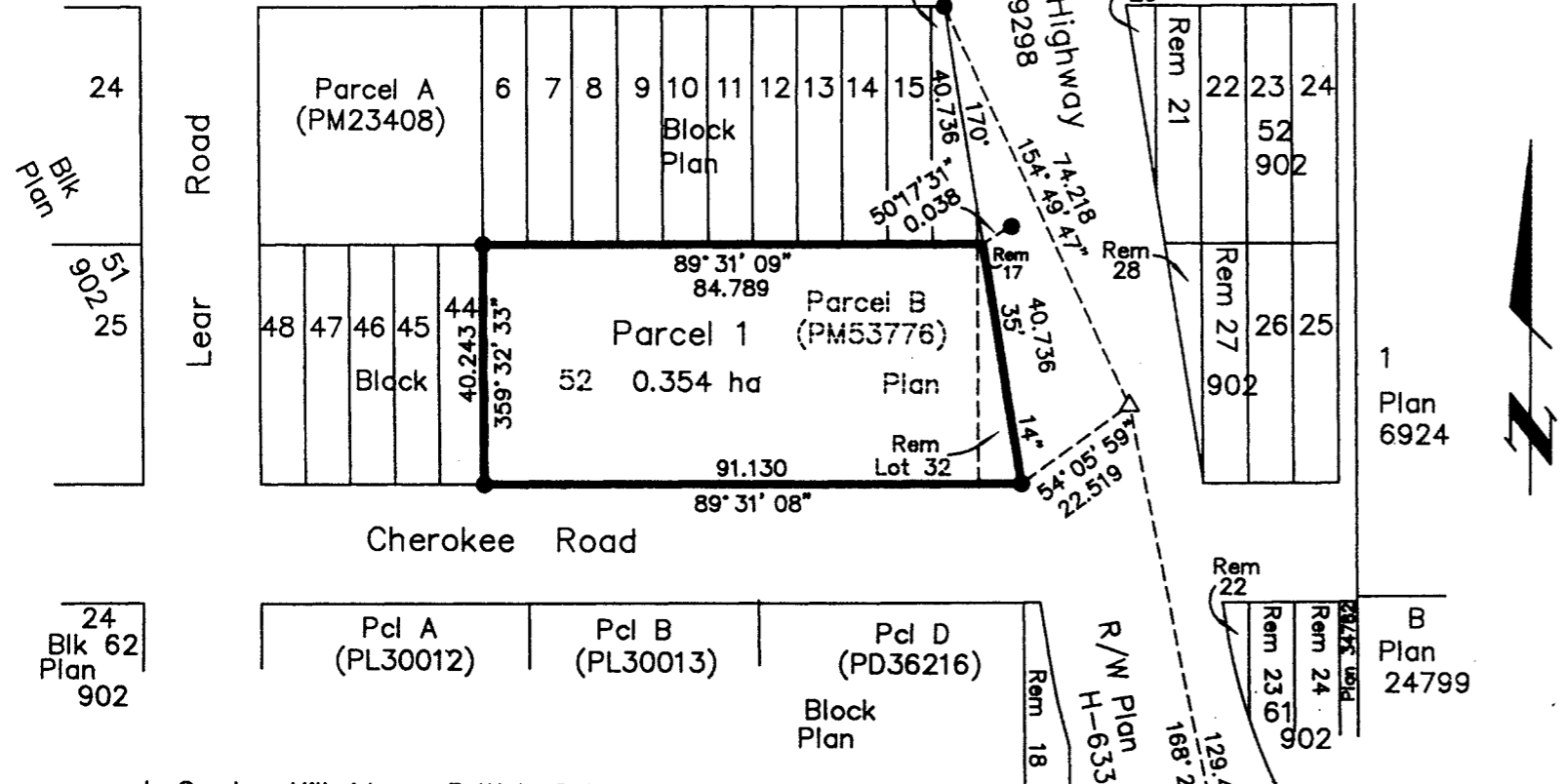


Pcl A
Plan
19847

Parcel 1
Plan PGP36552

PLAN NO. PGP45167

Deposited in the Land Title Office at Prince
George this 29 day of Feb 2000.



REFERENCE PLAN OF CONSOLIDATION
 THE REMAINDER OF LOT 32
 AND PARCEL B (PM53776), BOTH
 OF BLOCK 52, PLAN 902, DISTRICT
 LOT 629, CARIBOO DISTRICT.
 Pursuant to Section 100(1)(b)
 of the Land Title Act.
 B.C.G.S. 93G.097

REGISTRAR

Scale: 1 : 1250 (Distances are in metres)



Grid bearings are derived from observations between
 control monuments 85H1257 and 85H1260, integrated
 survey area number 39, City of Prince George, B.C.
 NAD83(CSRS)

Note: This plan shows ground level measured
 distances. Prior to computation of U.T.M.
 co-ordinates multiply by the combined
 factor 0.9995012

LEGEND



Standard Iron Post Found
 Control Monument Found
 Traverse Hub Placed

This plan lies within the Fraser-Fort
 George Regional District.

I, Gordon Kilbride, a British Columbia Land Surveyor of
 Prince George in British Columbia, certify that I was
 present at and personally supervised the survey
 represented by this plan and that the survey and plan
 are correct. The survey was completed on the 16th day
 of February, 2000.

Gordon Kilbride

Gordon Kilbride, B.C.L.S.

Owner: Forbes Industrial Contractors Ltd.
 Inc. No. 472522

Andrew M. Forbes
 Authorized Signatory

Andrew M. Forbes
 Print Name

Authorized Signatory

Print Name

Linda Moshenko
 Witness to both

LINDA MOSHENKO
 Print Name

185 - Quebec Street
 Address

Prince George BC V2L 1W1
 Postal Code

DRAFTSPERSON
 Occupation

KILBRIDE LAND SURVEYING LTD.
 British Columbia Land Surveyors
 Prince George, B.C.
 Ph: (250) 562-1196 Fax: 562-3656

F.B.- RA D.L.- 629 File No. - 000023