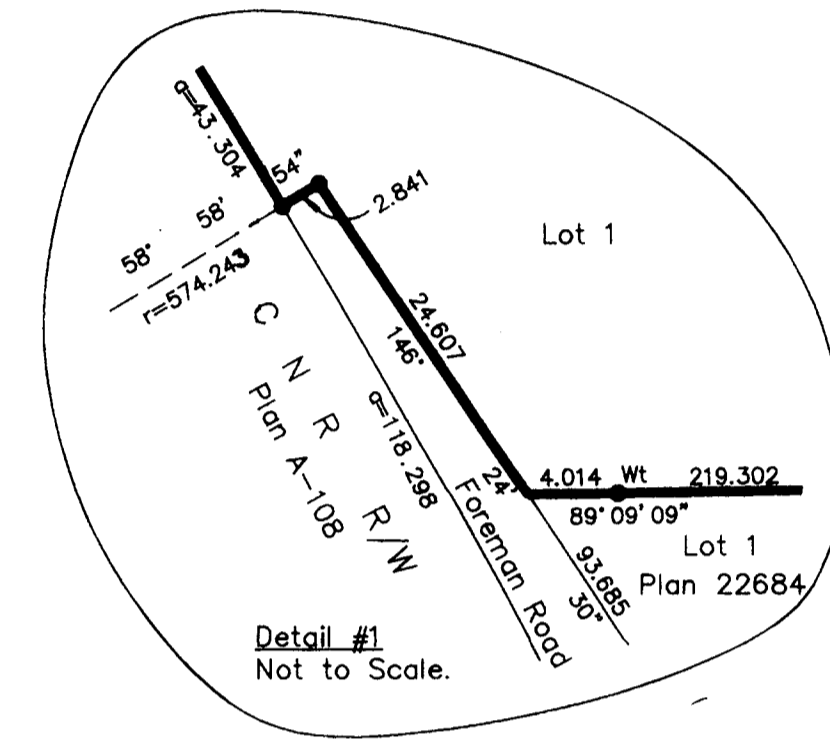
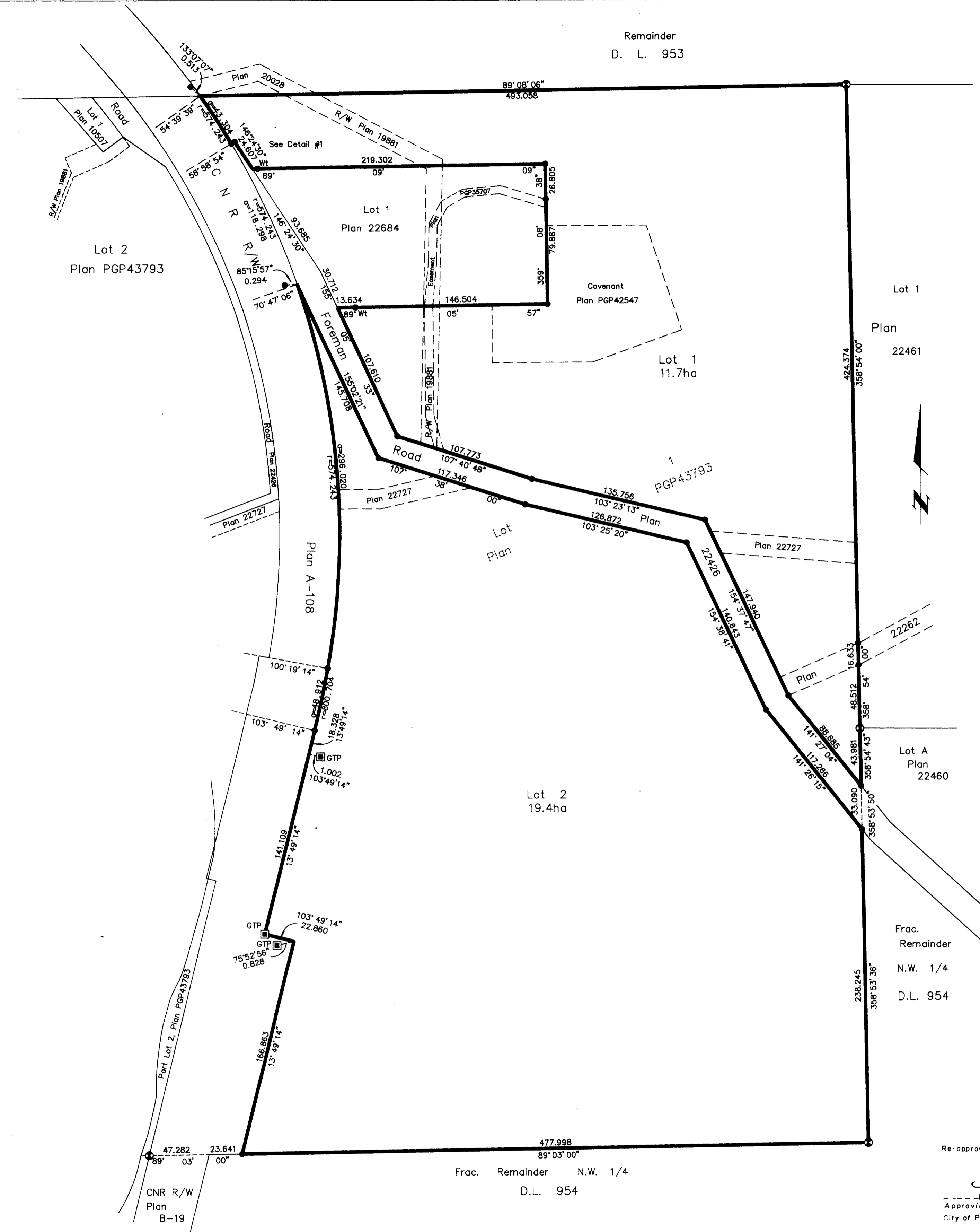


Deposited in the Land Title Office at Prince George this 23 day of DEC. 1997

REGISTRAR



PLAN OF SUBDIVISION OF LOT 1, PLAN PGP43793, DISTRICT LOT 935, CARIBOO DISTRICT. B.C.G.S. 93G.097

Scale: 1 : 2000 (Distances are in metres)

Bearings are astronomic, derived from Plan 22426

- LEGEND
- Standard Capped Post Found
  - Standard Old Grand Trunk Pacific Post Found
  - Standard Iron Post Found

I, Dale L. Keown, a British Columbia Land Surveyor of Prince George in British Columbia, certify that I was present at and personally supervised the survey represented by this plan and that the survey and plan are correct. The survey was completed on the 16th day of October, 1999.

*Dale Keown*  
Dale L. Keown, B.C.L.S.

Owner:  
*Ilse Lydia Kuemper*  
Ilse Lydia Kuemper  
(Having Power of Attorney for Margot Mary Kupper, Ernst Wilhelm Kupper, Monica Doris Kupper and Helen Powers)

Witness:  
*Nora Strawbridge*  
Nora Strawbridge  
185 Quebec St  
Prince George BC V2L 1W1  
Secretary

Re-approved this 30 day of December 19 99

*E. Mueller*  
Approving Officer  
City of Prince George

Approved under the Land Title Act this 19 day of October 1999  
*E. Mueller*  
Approving Officer  
City of Prince George

This plan lies within the Fraser-Fort George Regional District.

KILBRIDE LAND SURVEYING LTD. British Columbia Land Surveyors Prince George, B.C. Ph: (250) 562-1196 Fax: 562-3656		
F.B.- RA	D.L.- 935	File No. - 980349-1