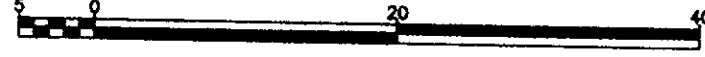


REFERENCE PLAN OF STATUTORY RIGHT OF WAY  
 WITHIN LOT 1, PLAN PGP \_\_\_\_\_, DISTRICT LOT 343,  
 CARIBOO DISTRICT.

Pursuant to Section 113 of the Land Title Act.  
 B.C.G.S. 93G.097

Scale: 1 : 500 (Distances are in metres)



Grid bearings are derived from observations between control monuments 85H1061 and 85H1318, integrated survey area number 39, City of Prince George, B.C. NAD83(CSRS)

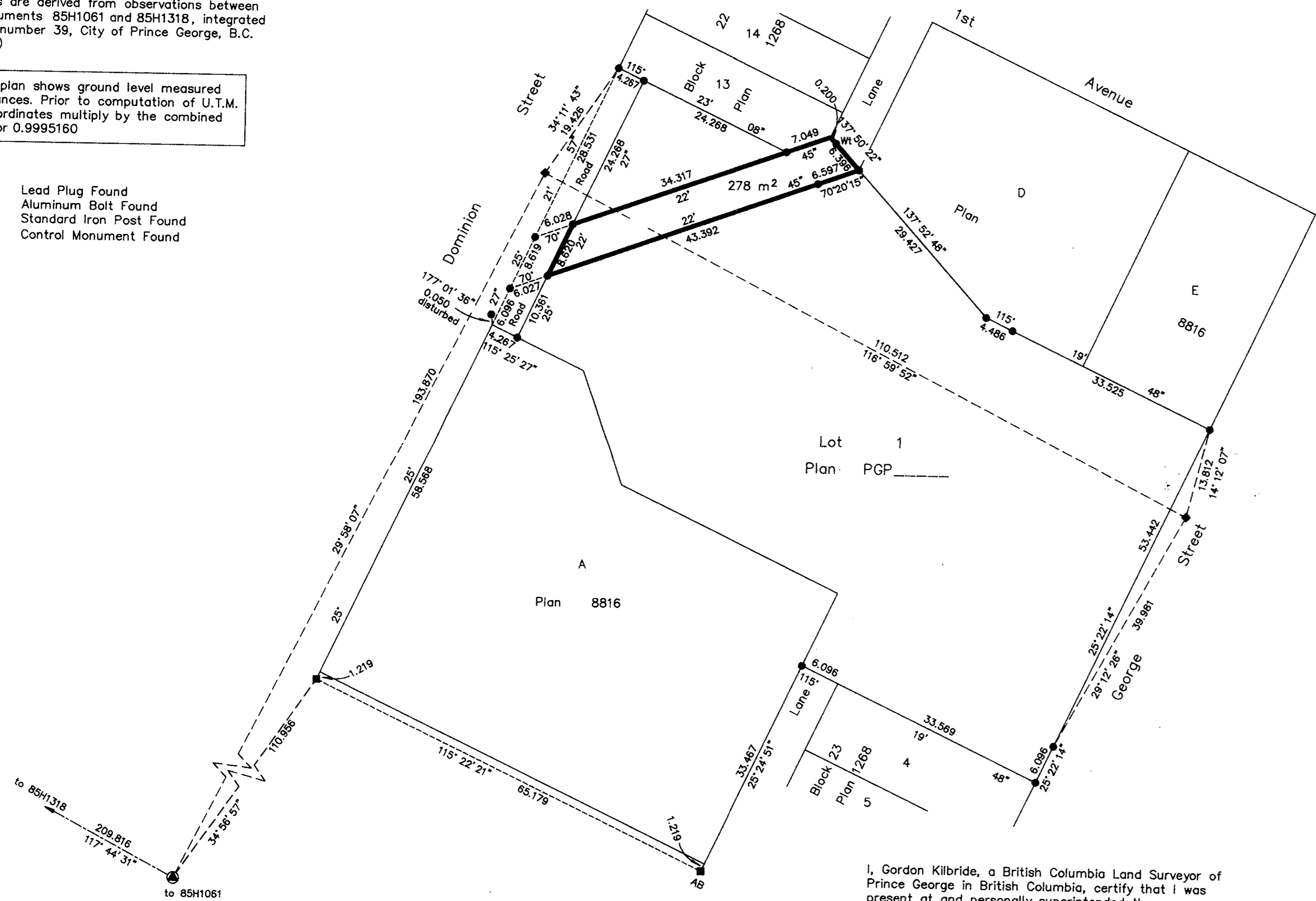
Note: This plan shows ground level measured distances. Prior to computation of U.T.M. co-ordinates multiply by the combined factor 0.9995160

- LEGEND**
- Lead Plug Found
  - AB Aluminum Bolt Found
  - Standard Iron Post Found
  - ⊙ Control Monument Found

PLAN NO. PGP 44885

Deposited in the Land Title Office at Prince George this 18 day of Nov. 1997

REGISTRAR



I, Gordon Kilbride, a British Columbia Land Surveyor of Prince George in British Columbia, certify that I was present at and personally supervised the survey represented by this plan and that the survey and plan are correct. The survey was completed on the 15th day of September, 1998.

*Gordon Kilbride*  
 Gordon Kilbride, B.C.L.S.

This plan lies within the Fraser-Fort George Regional District.

<b>KILBRIDE LAND SURVEYING LTD.</b> British Columbia Land Surveyors Prince George, B.C.		
Ph: (250) 562-1196 Fax: 562-3656		
F.B.- W24	D.L.- 343(22)	FILE No. -980400R1