

PLAN OF SUBDIVISION OF
 LOT 12, BLOCK 22, PLAN 1268,
 LOTS B AND C, PLAN 8816 AND
 CLOSED LANE PLAN PGP 43795,
 DISTRICT LOT 343, CARIBOO DISTRICT.
 B.C.G.S. 93G.097

PLAN NO. PGP 44884

Deposited in the Land Title Office at Prince
 George this 8 day of Nov 1999

Scale: 1 : 500 (Distances are in metres)

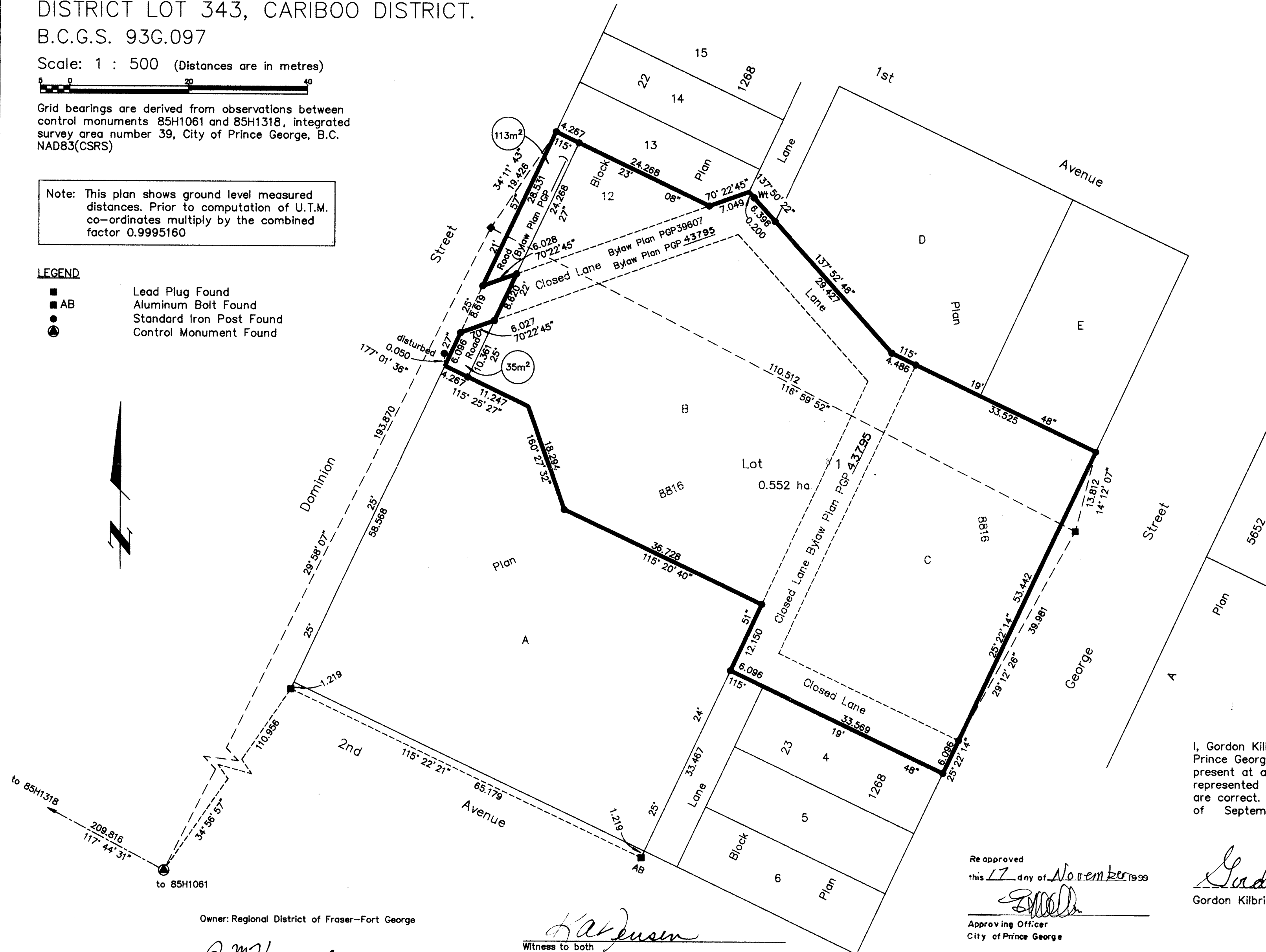


Grid bearings are derived from observations between
 control monuments 85H1061 and 85H1318, integrated
 survey area number 39, City of Prince George, B.C.
 NAD83(CSRS)

Note: This plan shows ground level measured
 distances. Prior to computation of U.T.M.
 co-ordinates multiply by the combined
 factor 0.9995160

LEGEND

- Lead Plug Found
- AB Aluminum Bolt Found
- Standard Iron Post Found
- ⊙ Control Monument Found



REGISTRAR

Inspected this 10th day of
 November, 1999.

Gordon Kilbride
 Gordon Kilbride B.C.L.S.

I, Gordon Kilbride, a British Columbia Land Surveyor of
 Prince George in British Columbia, certify that I was
 present at and personally superintended the survey
 represented by this plan and that the survey and plan
 are correct. The survey was completed on the 24th day
 of September, 1998.

Re approved
 this 17 day of November 1999

[Signature]
 Approving Officer
 City of Prince George

Approved under the Land Title Act this 2 day of
 September, 1999

[Signature]
 Approving Officer
 City of Prince George

Gordon Kilbride
 Gordon Kilbride, B.C.L.S.

This plan lies within the Fraser-Fort
 George Regional District.

Owner: Regional District of Fraser-Fort George

[Signature]
 Authorized Signatory
ROBERT M. HEADRICK, CHAIRMAN
 Print Name
[Signature]
 Authorized Signatory
**ANNE HOGAN, ADMINISTRATOR/
 SECRETARY**
 Print Name

[Signature]
 Witness to both
KARLA A. JENSEN
 Print Name
96 987 FOURTH AVENUE
 Address
PRINCE GEORGE BC V2L 3H7
 Postal Code
RECORDING SECRETARY
 Occupation

KILBRIDE LAND SURVEYING LTD.
 British Columbia Land Surveyors
 Prince George, B.C.
 Ph: (250) 562-1196 Fax: 562-3656
 F.B.- W24 D.L.- 343 (22) FILE No. - 980400S

PID 024-635-171

74-16