

PLAN NO. PGP 44723

Deposited in the Land Title Office at Prince George this 18 day of OCT 1999

REGISTRAR

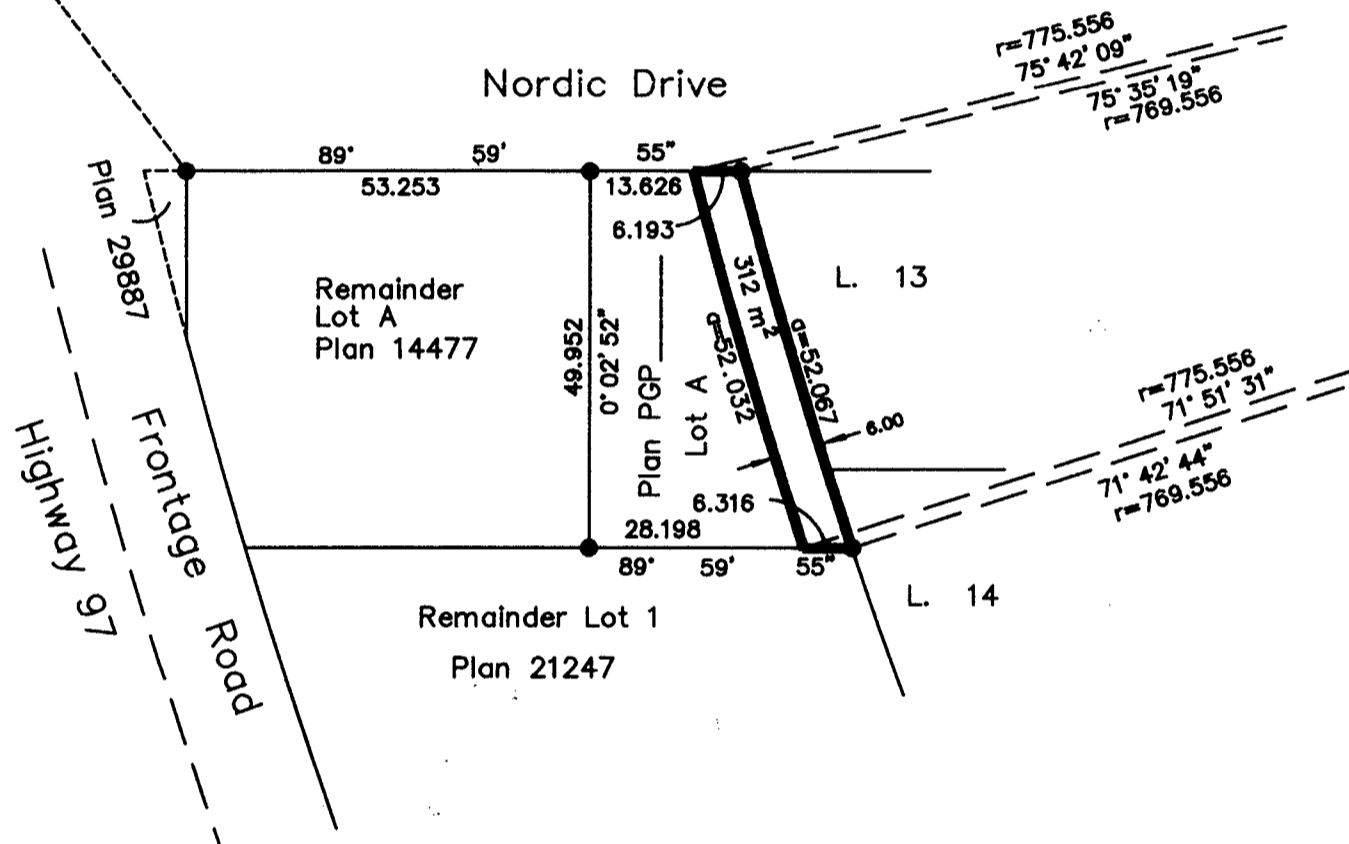
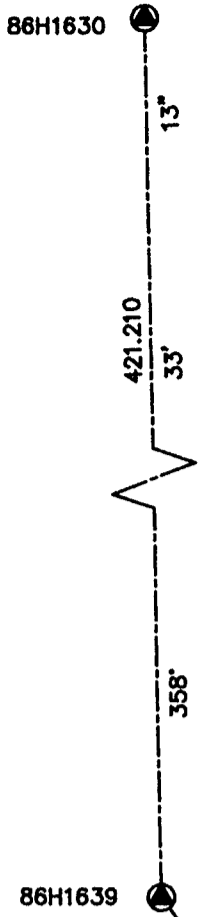
REFERENCE PLAN OF STATUTORY RIGHT OF WAY OVER LOT A, PLAN PGP, DISTRICT LOT 2433, CARIBOO DISTRICT. Pursuant to Section 113 of the Land Title Act. B.C.G.S. 93J.007

Scale: 1 : 1000 (Distances are in metres)



LEGEND

- Standard Iron Post Found
- ⊙ Control Monument Found



Grid bearings are derived from observations between control monuments 86H1639 and 86H1630, integrated survey area number 39, City of Prince George, B.C. NAD83(CSRS)

Note: This plan shows ground level measured distances. Prior to computation of U.T.M. co-ordinates multiply by the combined factor 0.9994860

I, Gordon Kilbride, a British Columbia Land Surveyor of Prince George in British Columbia, certify that I was present at and personally superintended the survey represented by this plan and that the survey and plan are correct. The survey was completed on the 23rd day of September, 1999.

*Gordon Kilbride*  
Gordon Kilbride, B.C.L.S.

This plan lies within the Fraser-Fort George Regional District.

<b>KILBRIDE LAND SURVEYING LTD.</b> British Columbia Land Surveyors Prince George, B.C. Ph: (250) 562-1196 Fax: 562-3656		
F.B.- WF70	D.L.- 2433	File No. - 990244RW