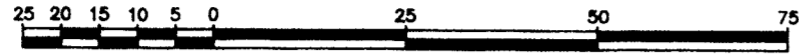


PLAN OF SUBDIVISION OF PART OF LOT 1, PLAN 21247, DISTRICT LOT 2433, CARIBOO DISTRICT.

B.C.G.S. 93J.007

Scale: 1 : 1000 (Distances are in metres)



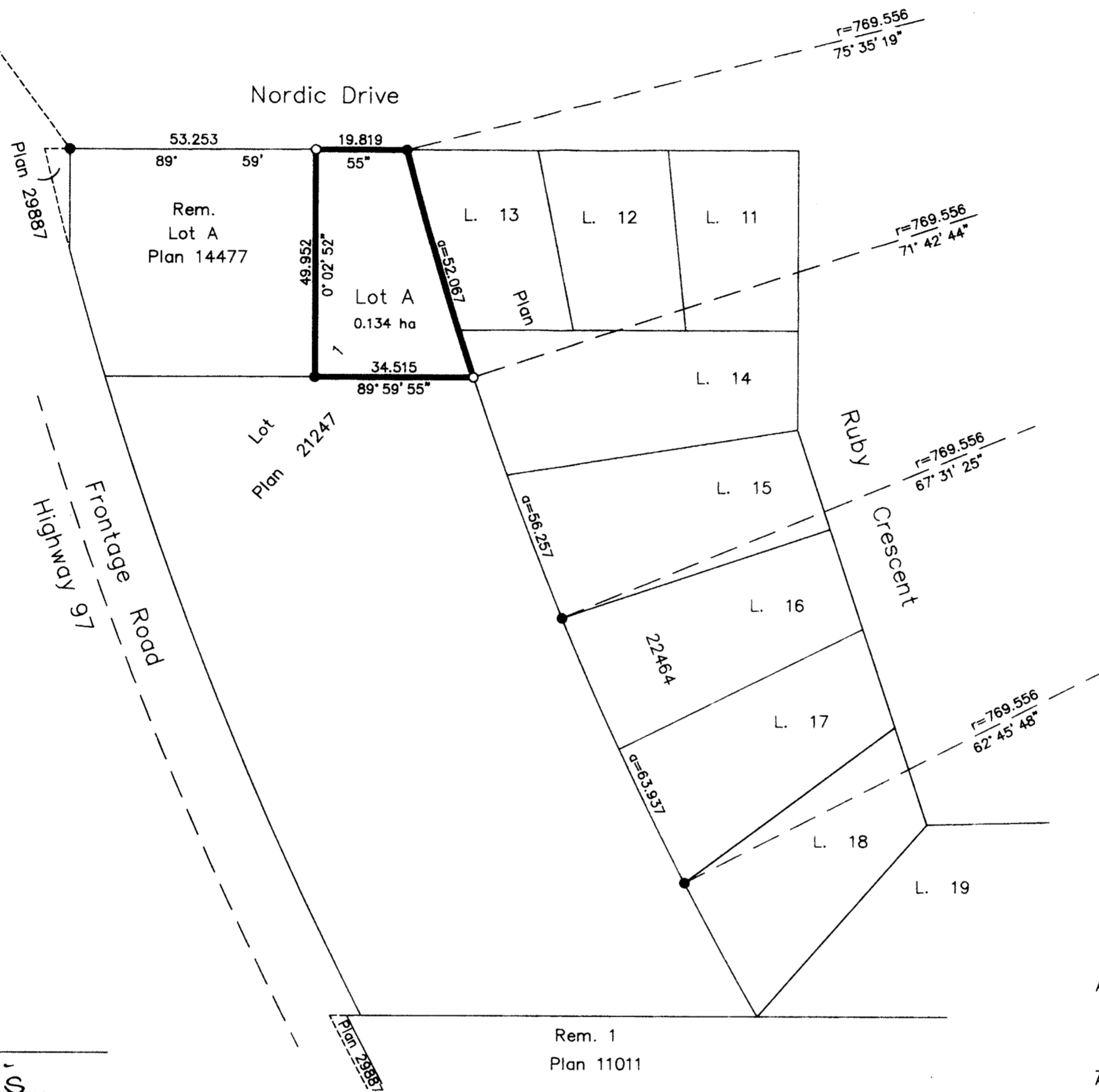
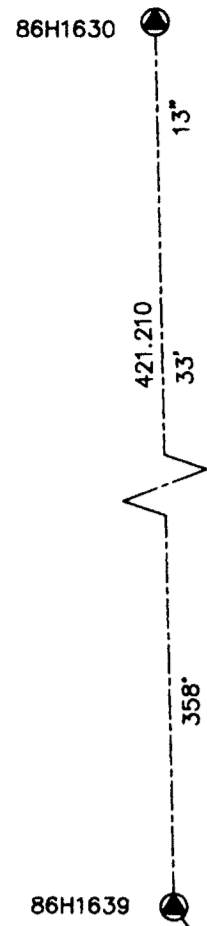
LEGEND

- Standard Iron Post Found
- Standard Iron Post Placed
- ⊙ Control Monument Found

Grid bearings are derived from observations between control monuments 86H1639 and 86H1630, integrated survey area number 39, City of Prince George, B.C. NAD83(CSRS)

Note: This plan shows ground level measured distances. Prior to computation of U.T.M. co-ordinates multiply by the combined factor 0.9994860

REGISTRAR



Owner: Marsolais Investments Ltd.
Inc. No. 443326

Martin Marsolais
Authorized Signatory
Print Name: MARTIN MARSOLAIS

Authorized Signatory

Print Name: Gordon Kilbride

Witness to both: Gordon Kilbride

Print Name: Gordon Kilbride

Address: 185 Quebec Street

Prince George V2L 1W1

Postal Code: B.C. Land Surveyor

Occupation: B.C. Land Surveyor

Rem. 1
Plan 11011

I, Gordon Kilbride, a British Columbia Land Surveyor of Prince George in British Columbia, certify that I was present at and personally superintended the survey represented by this plan and that the survey and plan are correct. The survey was completed on the 23rd day of September, 1999.

Gordon Kilbride
Gordon Kilbride, B.C.L.S.

Approved under the Land Title Act this 14th day of October, 1999

Martin G. B...
Approving Officer
Ministry of Transportation and Highways

Approved under the Land Title Act this 14th day of October, 1999

Ellen...
Approving Officer
City of Prince George

This plan lies within the Fraser-Fort George Regional District.

KILBRIDE LAND SURVEYING LTD.
British Columbia Land Surveyors
Prince George, B.C.
Ph: (250) 562-1196 Fax: 562-3656

F.B.- WF70 D.L.- 2433 File No. -9902445