

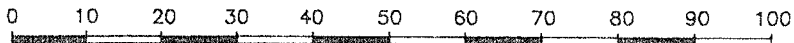
REFERENCE PLAN OF EASEMENT THROUGH
THE REM. OF THE EAST 1/2 OF
THE SOUTH EAST 1/4 OF D.L. 4031
CARIBOO DISTRICT

PLAN No. PGP 44296

DEPOSITED IN THE LAND TITLE OFFICE
AT PRINCE GEORGE, B.C., THIS 14
DAY OF June, 1999.

B.C.G.S. 93J.007

PURSUANT TO SECTION 182 OF THE LAND TITLE ACT



SCALE: 1 : 1000

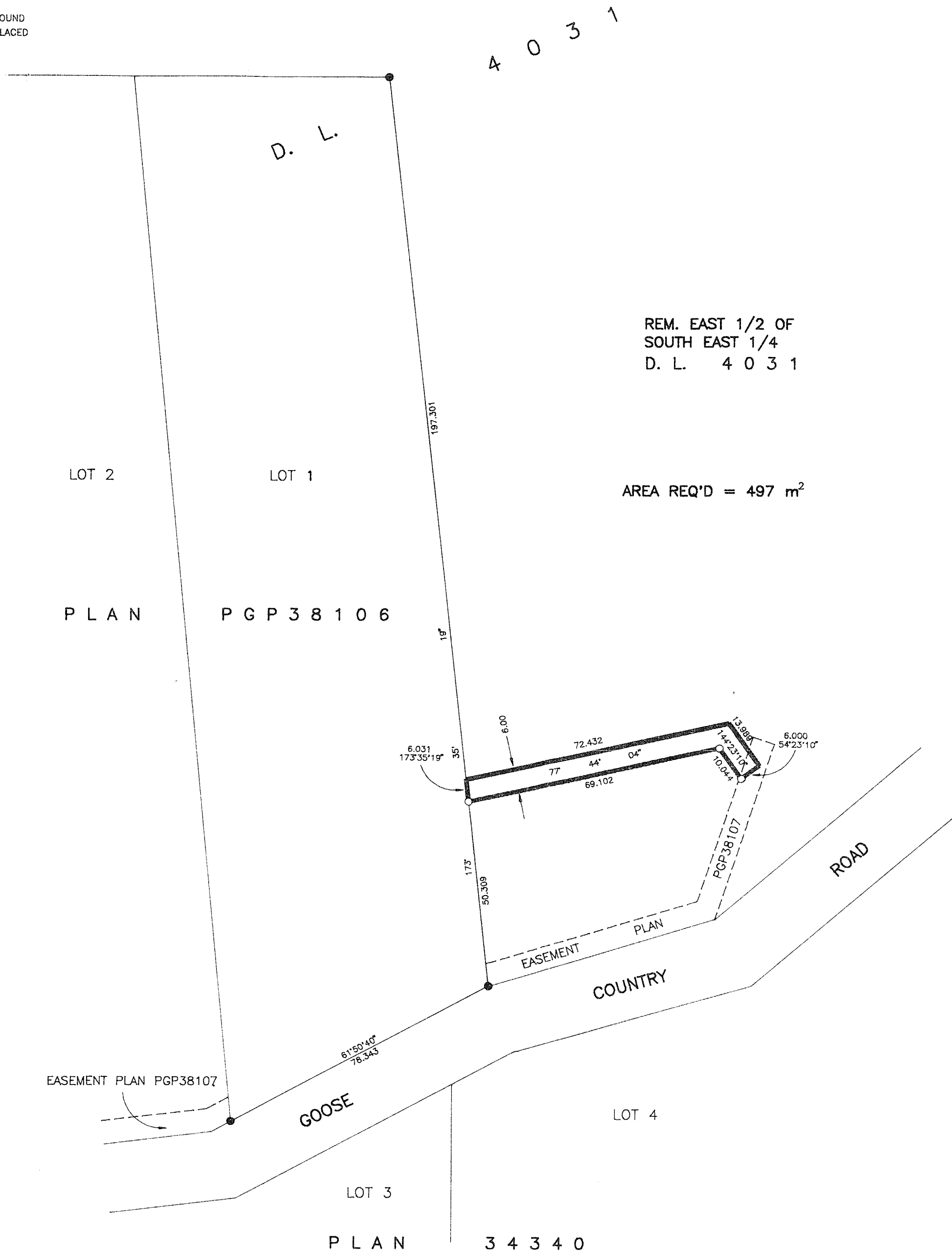
BEARINGS ARE ASTRONOMIC, DERIVED
FROM THE EAST BOUNDARY OF LOT 1,
FROM PLAN PGP38106

"PK"
REGISTRAR

PN 20894

LEGEND

- STANDARD IRON POST FOUND
- STANDARD IRON POST PLACED



I, RONALD L. JOHNS, A BRITISH COLUMBIA LAND SURVEYOR, OF PRINCE GEORGE, IN BRITISH COLUMBIA, CERTIFY THAT I WAS PRESENT AT AND PERSONALLY SUPERINTENDED THE SURVEY REPRESENTED BY THIS PLAN AND THAT THE SURVEY AND PLAN ARE CORRECT. THE SURVEY WAS COMPLETED ON THE 2ND DAY OF JUNE, 1999.

R. L. Johns
R.L. JOHNS, B.C.L.S., C.L.S.

THIS PLAN LIES WITHIN THE FRASER-FORT GEORGE REGIONAL DISTRICT.

R. L. JOHNS LAND SURVEYING LTD.
LEGAL AND ENGINEERING SURVEYS
240 VICTORIA STREET
PRINCE GEORGE, B. C. V2L 2J4
PHONE: (250)562-5759
FAX: (250)562-5703