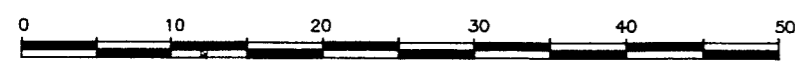


PLAN OF SUBDIVISION OF LOTS 41
AND 42, PLAN PGP41824
DISTRICT LOT 1605
CARIBOO DISTRICT

B.C.G.S. 93G.087

PLAN No. PGP44283

DEPOSITED IN THE LAND TITLE OFFICE
AT PRINCE GEORGE, B.C., THIS 11th
DAY OF JUNE 1999



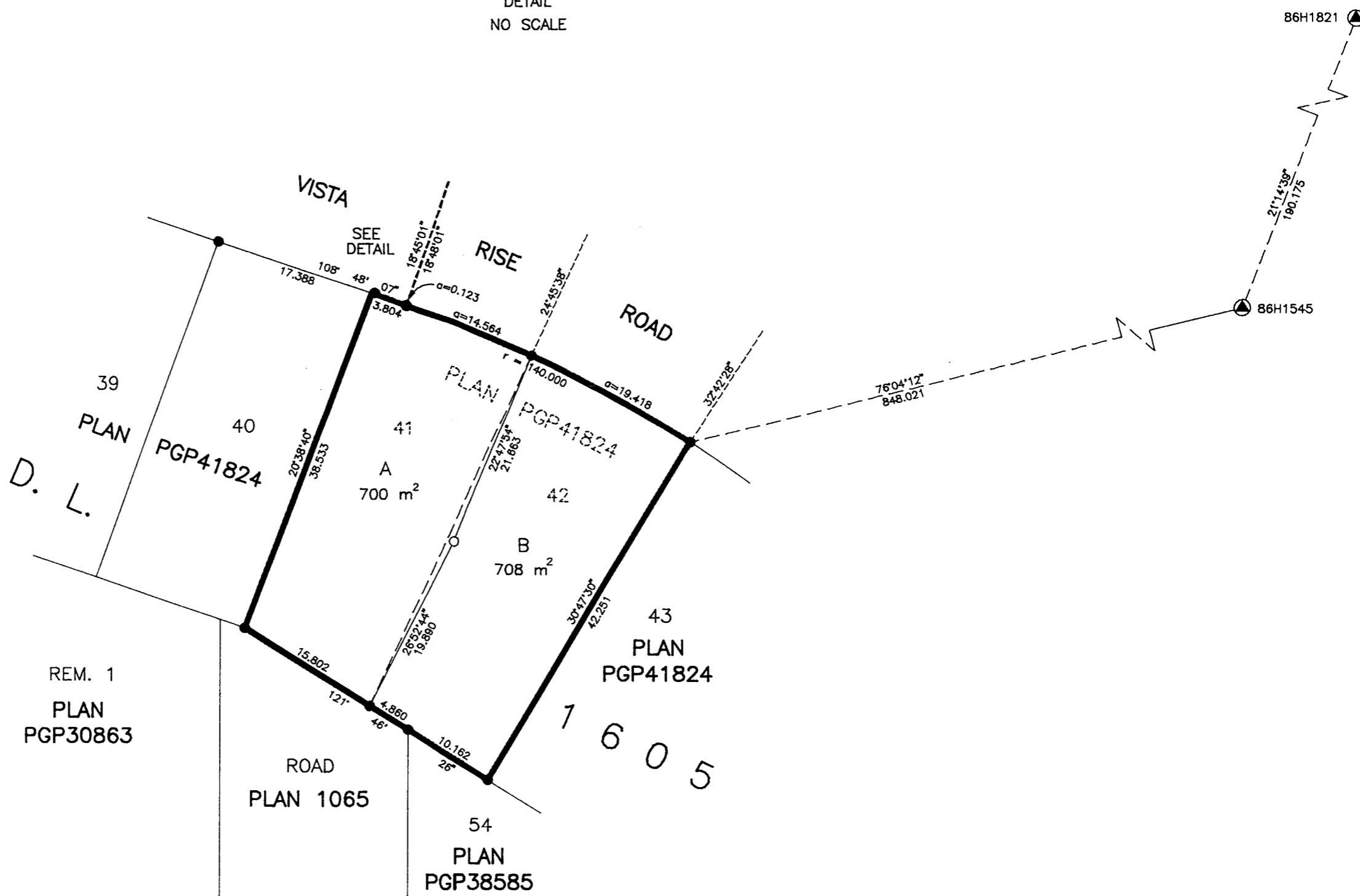
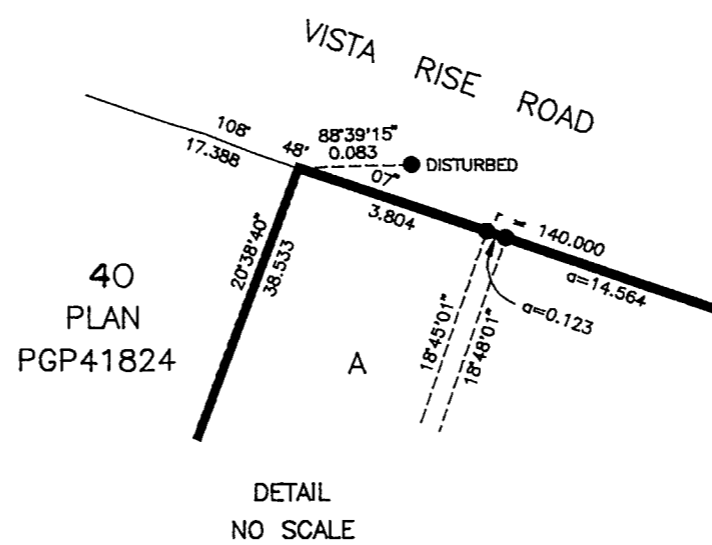
SCALE = 1 : 500
ALL DISTANCES ARE SHOWN IN METRES.

THIS PLAN SHOWS GROUND-LEVEL MEASURED DISTANCES.
PRIOR TO COMPUTATION OF U.T.M. COORDINATES, MULTIPLY
BY COMBINED FACTOR 0.9995058.

GRID BEARINGS ARE DERIVED FROM OBSERVATIONS
BETWEEN CONTROL MONUMENTS 86H1545, AND 86H1821,
INTEGRATED SURVEY AREA NUMBER 39, PRINCE GEORGE.

LEGEND

- STANDARD IRON POST FOUND
- STANDARD IRON POST PLACED
- ▲ CONTROL MONUMENT



ELITE PACIFIC HOMES LTD.

BARBICAN PROPERTIES INC.

M. Dillon
AUTHORIZED SIGNATORY

AUTHORIZED SIGNATORY

MAKHAN S. DHILLON
PRINT NAME

PRINT NAME

M. Khalil
AUTHORIZED SIGNATORY

AUTHORIZED SIGNATORY

MIKE NATHAL
PRINT NAME

PRINT NAME

APPROVED UNDER THE LAND TITLE ACT
THIS 11 DAY OF JUNE 1999

[Signature]
APPROVING OFFICER, CITY OF PRINCE GEORGE.

I, RONALD L. JOHNS, A BRITISH COLUMBIA LAND SURVEYOR, OF PRINCE GEORGE, IN BRITISH COLUMBIA, CERTIFY THAT I WAS PRESENT AT AND PERSONALLY SUPERINTENDED THE SURVEY REPRESENTED BY THIS PLAN AND THAT THE SURVEY AND PLAN ARE CORRECT. THE SURVEY WAS COMPLETED ON THE 29TH DAY OF APRIL, 1999.

M. Dillon
WITNESS (AS TO BOTH SIGNATURES)

WITNESS (AS TO BOTH SIGNATURES)

NEELAM DILLON
PRINT NAME

PRINT NAME

672 - 1st St
ADDRESS

ADDRESS

Prince George

Care-A-2
OCCUPATION

OCCUPATION

THIS PLAN LIES WITHIN THE FRASER-FORT GEORGE REGIONAL DISTRICT.

R. L. JOHNS LAND SURVEYING LTD.
LEGAL AND ENGINEERING SURVEYS
240 VICTORIA STREET
PRINCE GEORGE, B. C. V2L 2J4
PHONE: (250)562-5759
FAX: (250)562-5703

R.L. JOHNS, B.C.L.S., C.L.S.

99028

AA8-18