

REFERENCE PLAN OF STATUTORY  
RIGHT-OF-WAY WITHIN THE  
REMAINDER OF THE N.E.1/4  
OF DISTRICT LOT 4050, CARIBOO DISTRICT.  
Pursuant to Section 114 of the Land Title Act.  
B.C.G.S. 93G.096

PLAN NO. PGP 44278

Deposited in the Land Title Office at Prince  
George this 10 day of June 1999.

----- "LK" -----  
REGISTRAR

PN 20437  
PID#024-535-591

Grid bearings are derived from observations between  
control monuments 86H1582 and 86H1586, integrated  
survey area number 39, City of Prince George, B.C.  
NAD83(CSRS)

**LEGEND**

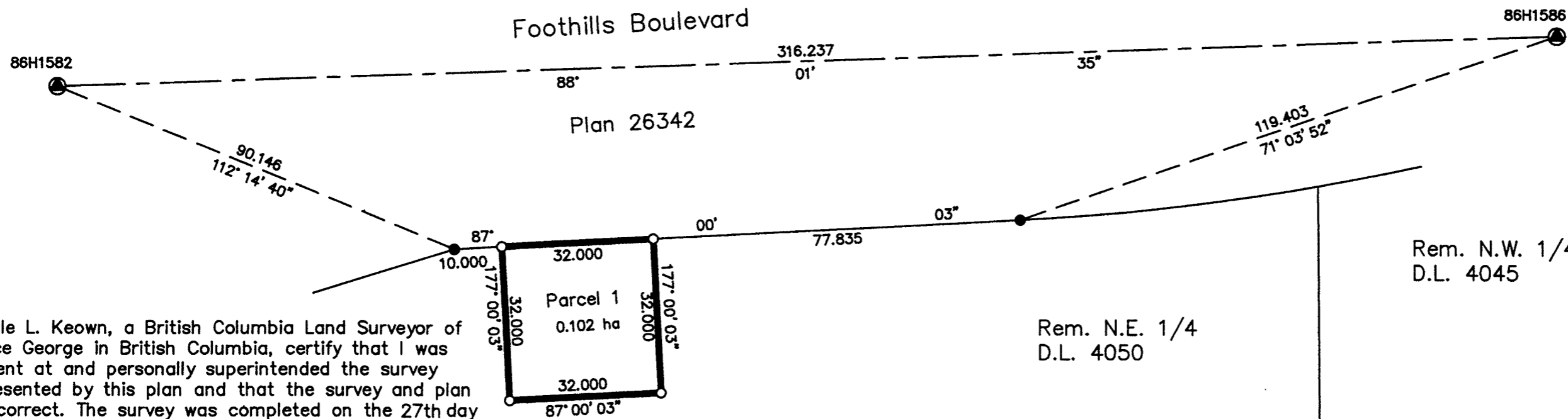
- Standard Iron Post Found
- Standard Iron Post Placed
- ⊙ Control Monument Found

Scale: 1 : 1000 (Distances are in metres)



Note: This plan shows ground level measured  
distances. Prior to computation of U.T.M.  
co-ordinates multiply by the combined  
factor 0.9994998

Rem. N.E. 1/4  
D.L. 4050



I, Dale L. Keown, a British Columbia Land Surveyor of  
Prince George in British Columbia, certify that I was  
present at and personally superintended the survey  
represented by this plan and that the survey and plan  
are correct. The survey was completed on the 27th day  
of May, 1999.

*Dale Keown*

Dale L. Keown, B.C.L.S.

This plan lies within the Fraser-Fort  
George Regional District.

<b>KILBRIDE LAND SURVEYING LTD.</b> British Columbia Land Surveyors Prince George, B.C. Ph: (250) 562-1196 Fax: 562-3656		
F.B.- RA	D.L.- 4050	FILE No. 970662