

PLAN OF SUBDIVISION OF PART OF
 LOT 24, PLAN PGP43199
 DISTRICT LOT 4039
 CARIBOO DISTRICT

B.C.G.S. 93G.097



SCALE = 1 : 1000

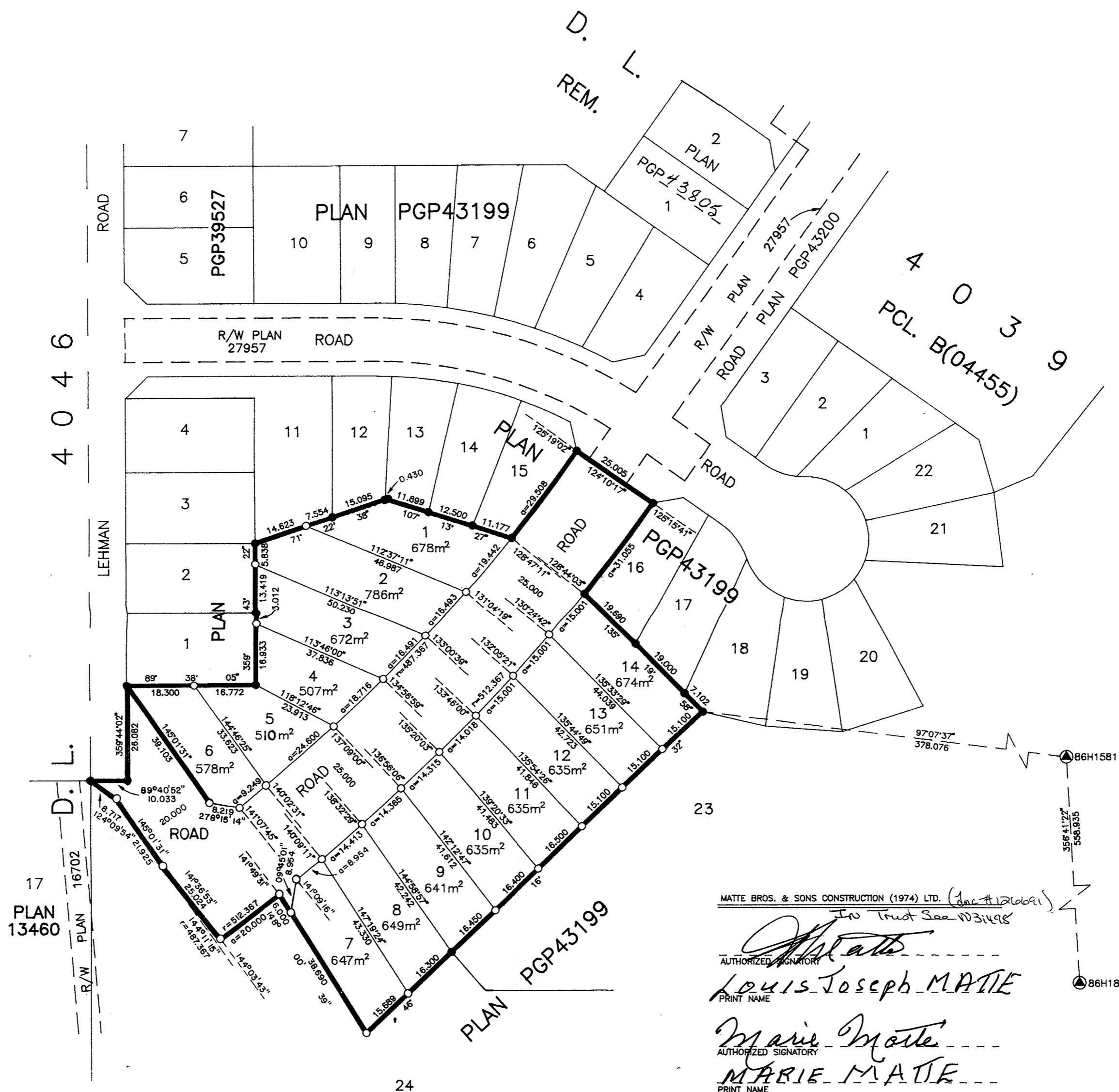
ALL DISTANCES ARE SHOWN IN METRES.

THIS PLAN SHOWS GROUND-LEVEL MEASURED DISTANCES.
 PRIOR TO COMPUTATION OF U.T.M. COORDINATES, MULTIPLY
 BY COMBINED FACTOR 0.99949463.

GRID BEARINGS ARE DERIVED FROM OBSERVATIONS
 BETWEEN CONTROL MONUMENTS 86H1581, AND 86H1854,
 INTEGRATED SURVEY AREA NUMBER 39, PRINCE GEORGE.

LEGEND

- STANDARD IRON POST FOUND
- STANDARD IRON POST PLACED
- ▲ CONTROL MONUMENT



PLAN No. PGP 43806

DEPOSITED IN THE LAND TITLE OFFICE
 AT PRINCE GEORGE, B.C., THIS 25
 DAY OF Mar, 19 99

REGISTRAR LK

APPROVED UNDER THE LAND TITLE ACT
 THIS 16th DAY OF March, 19 99

M. G. B. B. B.
 APPROVING OFFICER, MINISTRY OF TRANSPORTATION
 AND HIGHWAYS.

APPROVED UNDER THE LAND TITLE ACT
 THIS 15th DAY OF March, 19 99

Bill Miller
 APPROVING OFFICER, CITY OF PRINCE GEORGE.

THIS PLAN LIES WITHIN THE FRASER-
 FORT GEORGE REGIONAL DISTRICT.

R. L. JOHNS LAND SURVEYING LTD.
 LEGAL AND ENGINEERING SURVEYS
 240 VICTORIA STREET
 PRINCE GEORGE, B. C. V2L 2J4
 PHONE: (250)562-5759
 FAX: (250)562-5703

I, RONALD L. JOHNS, A BRITISH COLUMBIA LAND
 SURVEYOR, OF PRINCE GEORGE, IN BRITISH COLUMBIA,
 CERTIFY THAT I WAS PRESENT AT AND PERSONALLY
 SUPERINTENDED THE SURVEY REPRESENTED BY THIS
 PLAN AND THAT THE SURVEY AND PLAN ARE CORRECT.
 THE SURVEY WAS COMPLETED ON THE 16TH DAY OF
 DECEMBER, 1997.

R. L. Johns
 R. L. JOHNS, B.C.L.S., C.L.S.

MATTE BROS. & SONS CONSTRUCTION (1974) LTD. (Inc # 1210191)
 In Trust See W31498
[Signature]
 AUTHORIZED SIGNATORY
 PRINT NAME LOUIS JOSEPH MATTE

Marie Matte
 AUTHORIZED SIGNATORY
 PRINT NAME MARIE MATTE

[Signature]
 WITNESS (AS TO BOTH SIGNATURES)
 PRINT NAME NATALIE TRODD
 ADDRESS 1861 Gordon Dr
Prince George, B.C.
 OCCUPATION Sec.